



FARM & RANCH

A HORSE LOVERS DREAM

17502 FM 920 – Poolville, TX



STEPHEN
REICH GROUP
WILLIAMS TREW REAL ESTATE

WilliamTrew[☆]
A DIVISION OF EBBY HALLIDAY REAL ESTATE, INC.

LISTED BY **STEPHEN REICH GROUP** OF WILLIAMS TREW REAL ESTATE

PROPERTY SUMMARY

DESCRIPTION

A horse lovers dream in Poolville TX. This little piece of heaven is conveniently located just north of Weatherford and in close proximity to Hwy 199, making it very accessible. The property is completely move in ready for you, your family and your horses. This is a lovely, open concept home with 3 bedrooms, 2 bathrooms, and a spacious deck. There is a 360 square foot bunk house with a full bath and heat, perfect for your overnight guests. This property boasts a 15 stall barn with runs and automatic waterers, a large tack room with tack up area, a large round pen and an outdoor barrel patch or riding area. Also situated on this property is an insulated shop with electricity. Soil is sandy loam with great grass.

LOCATION

CITY	Poolville
County	Parker
Schools	Poolville ISD
Driving Directions	16 mi NW of Weatherford on FM 920.

OFFER SUMMARY

List Price	\$699,000
Lot Size	13.01 acres
Utilities	Co-op Water, Septic, Well

HIGHLIGHTS

- 13.01 ACRES
- 2,024 SF / 3 BEDROOMS / 2 BATHS
- MOVE IN READY
- 360 SF BUNK HOUSE
- 15 STALL BARN W/RUNS
- LARGE INSULATED SHOP

LISTING PRESENTED BY:



STEPHEN REICH
817-597-8884
stephen.reich@williamstrew.com

PARKER COUNTY OFFICE
400 Shops Boulevard, Ste. 200
Willow Park, TX 76087

FARM & RANCH • RESIDENTIAL • COMMERCIAL-DEVELOPMENT • LAND

PROPERTY PHOTOS

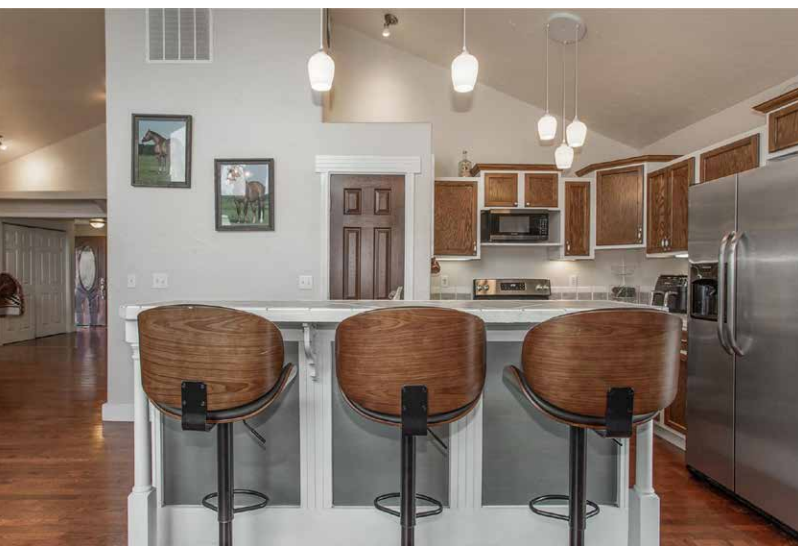


STEPHEN REICH – 817.597.8884



WilliamsTrew 
A DIVISION OF EBBY HALLIDAY REAL ESTATE, INC.

PROPERTY PHOTOS

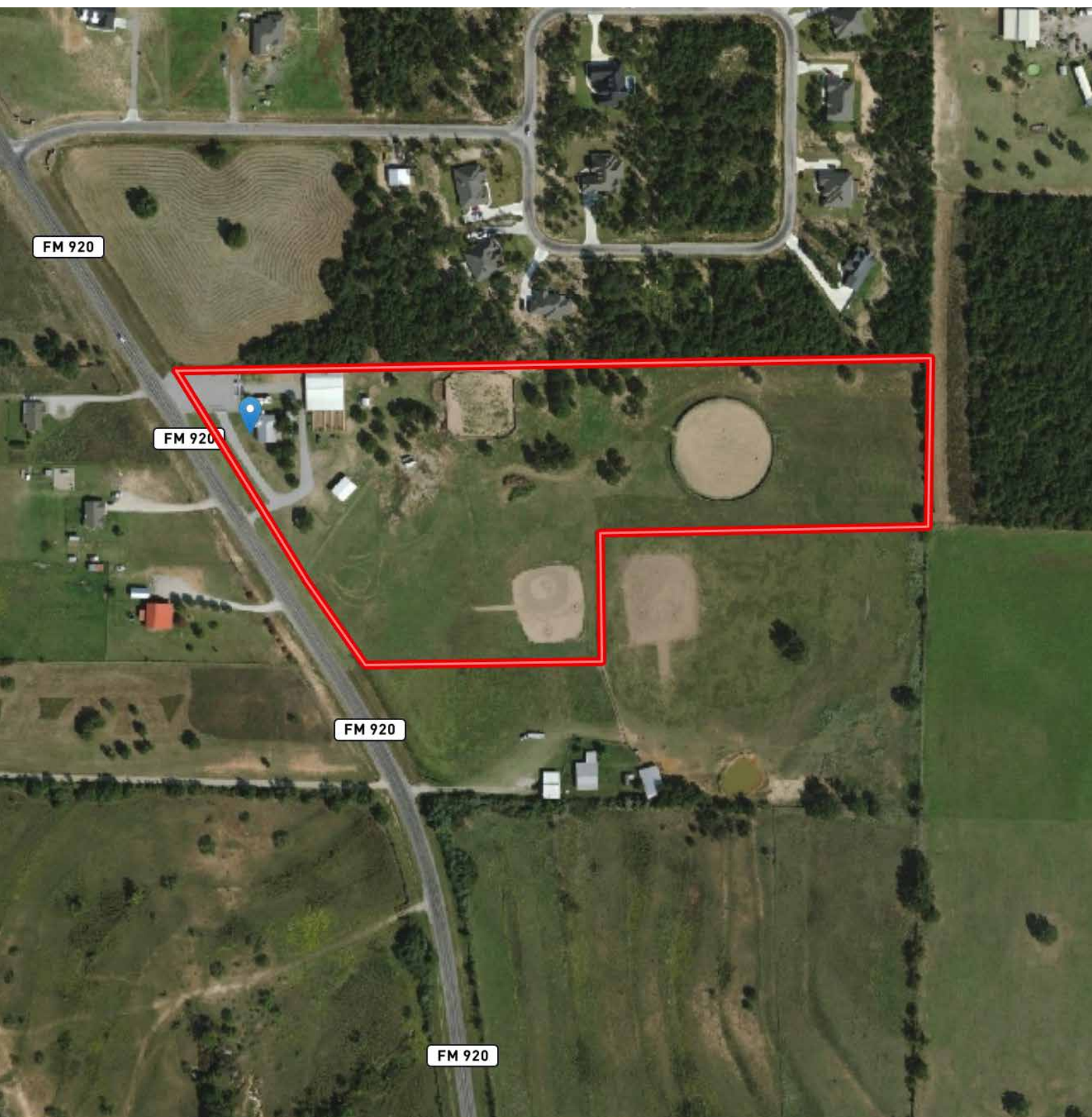


STEPHEN REICH – 817.597.8884



WilliamsTrew 
A DIVISION OF EBBY HALLIDAY REAL ESTATE, INC.

AERIAL MAP



CONTOUR LINES & FLOODPLAIN

