



OFFERED FOR SALE

WESSON DELTA FARMS

An Agricultural and Recreational Investment Opportunity

471 (+/-) Acres • Phillips County, Arkansas

OFFERED BY



AGRICULTURE | RECREATION | TIMBERLAND

Traditional Brokerage + Sealed Bids + Consulting

LICENSED IN ARKANSAS, LOUISIANA, MISSISSIPPI, TEXAS AND TENNESSEE



DISCLOSURE STATEMENT

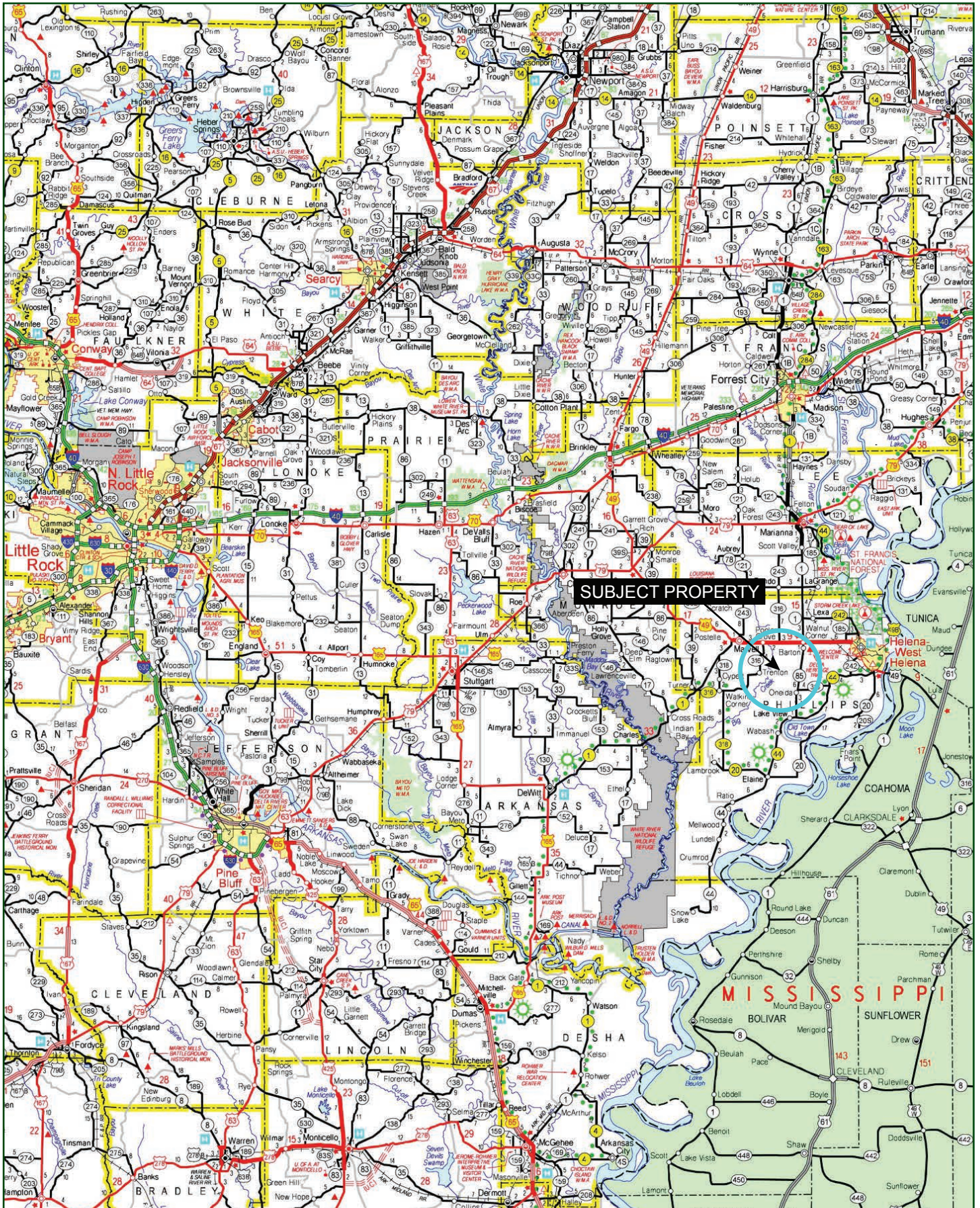
Lile Real Estate, Inc. is the listing agency for the owner of the property described within this offering brochure.

A representative of Lile Real Estate, Inc. must be present to conduct a showing. The management of Lile Real Estate, Inc. respectfully requests that interested parties contact us in advance to schedule a proper showing and do not attempt to tour or trespass on the property on their own. Thank you for your cooperation.

Some images shown within this offering brochure are used for representative purposes and may not have been taken on location at the subject property.

This offering is subject to errors, omissions, change or withdrawal without notice. All information provided herein is intended as a general guideline and has been provided by sources deemed reliable, but the accuracy of which we cannot guarantee.

VICINITY MAP



PROPERTY SUMMARY

Description:

Wesson Delta Farms consists of 471 +/- acres offering an agricultural and recreational investment opportunity located in Phillips County, Arkansas just south of the town of Barton.

The property consists of 453.85 +/- cultivated acres, the majority of which is row water irrigated. Rice has been the primary crop in recent years, but the property also offers the ability to plant other row crops common to the area. Portions of the property have had some dirt work done, with the whole south 80 +/- acre parcel having been completely precision-leveled at a 3/10th grade. There is easy access to and throughout the farm. The majority of the farm has county road access with two separate parcels offering access through easements. The main headquarters offers a 1,200 +/- square foot shed and 200 square foot office to store equipment and run the day to day farming operations. In addition to having good access, the property is located close to the town of Helena, which gives the producer the ability to easily transport grain a short distance to a saturated buyer's market.

Along with great row crop potential, the property also offers both duck and deer hunting opportunities. The western side of the property lies just over one-half mile from the well-known and productive local waterfowl flyway of Big Creek. The farmland lies in such a way that numerous blinds can be well placed in addition to an existing pit blind and three ground blinds. This proven waterfowl area is supported by a large Wetland Reserve Easement (WRE) tract just to the north. The property has been commercially leased for hunting for eight straight years with a contingent lease in place for the 2021/2022 season. Great deer hunting also exists, and many large deer have been taken in the area over the years.

Location:

Phillips County, Arkansas; East Central Region of Arkansas

Mileage Chart

Memphis, TN	75 miles
Oxford, MS	85 miles
Jonesboro, AR	95 miles
Little Rock, AR	110 miles

Acreage:

471 +/- acres (source: Phillips County Tax Assessor)

- 453.85 +/- cultivated acres (source: Farm Service Agency)*

**Excludes acreage marked out on FSA map.*

PROPERTY SUMMARY

Access: County Road 342 and County Road 346 (through easement)

Farm Service Agency: Please see Farm Service Agency (FSA) 156EZ included within this brochure, which details crop bases and PLC yields.

Irrigation: Two (2) 6" electric submersible wells
One (1) 8" electric submersible well
One (1) 8" electric turbine well
Two (2) 8" diesel turbine wells

Soils: Class II: 1%
Class III: 89%
Class IV: 10%

Farm Lease: No existing lease; currently farmed by the landowner. There is an excellent tenant pool in this neighborhood.

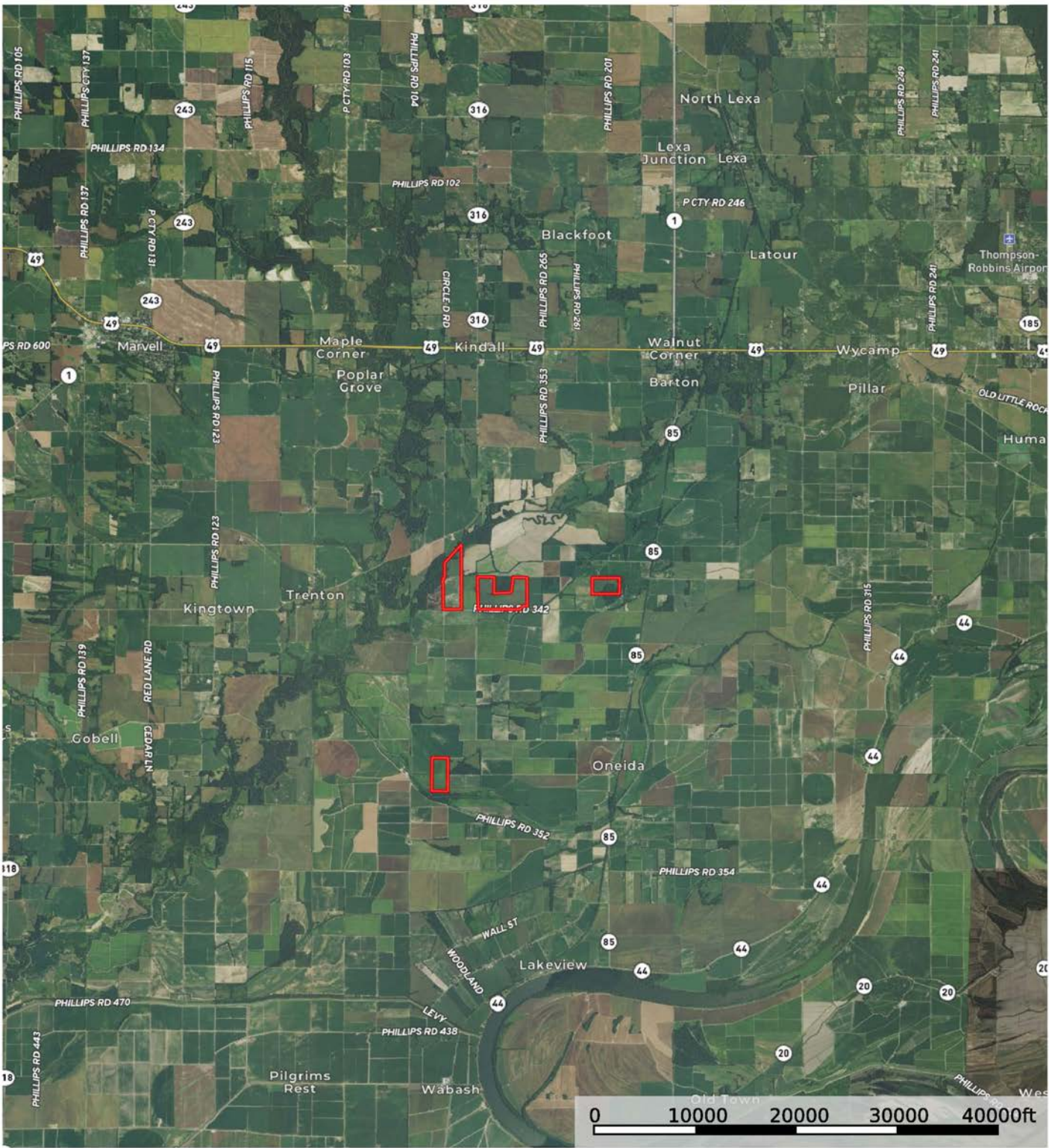
Real Estate Taxes:	Parcel Number	Acreage	Est. Taxes
	001-04947-000	52.50	\$298.00
	001-04955-000	80.00	\$603.00
	001-04958-000	40.00	\$362.00
	001-04960-000	20.00	\$181.00
	001-04959-000	20.00	\$181.00
	001-04961-000	40.00	\$362.00
	001-04963-000	40.00	\$362.00
	001-04965-000	38.50	\$349.00
	001-04978-000	40.00	\$333.00
	001-04994-001	20.00	\$29.00
	001-05278-000	40.00	\$359.00
	001-05279-000	40.00	\$400.00
	Total	471.00	\$3,819.00

Mineral Rights: All mineral rights owned by the Seller, if any, shall transfer to the Buyer.

Offering Price: \$2,115,000.00 (\$4,490.00 per acre)

Contact: Any questions concerning this offering, or to schedule a property tour should be directed to Trey Morris (mobile: 870-338-1385) or Gar Lile (mobile: 501-920-7015) of Lile Real Estate, Inc.

AERIAL MAP I

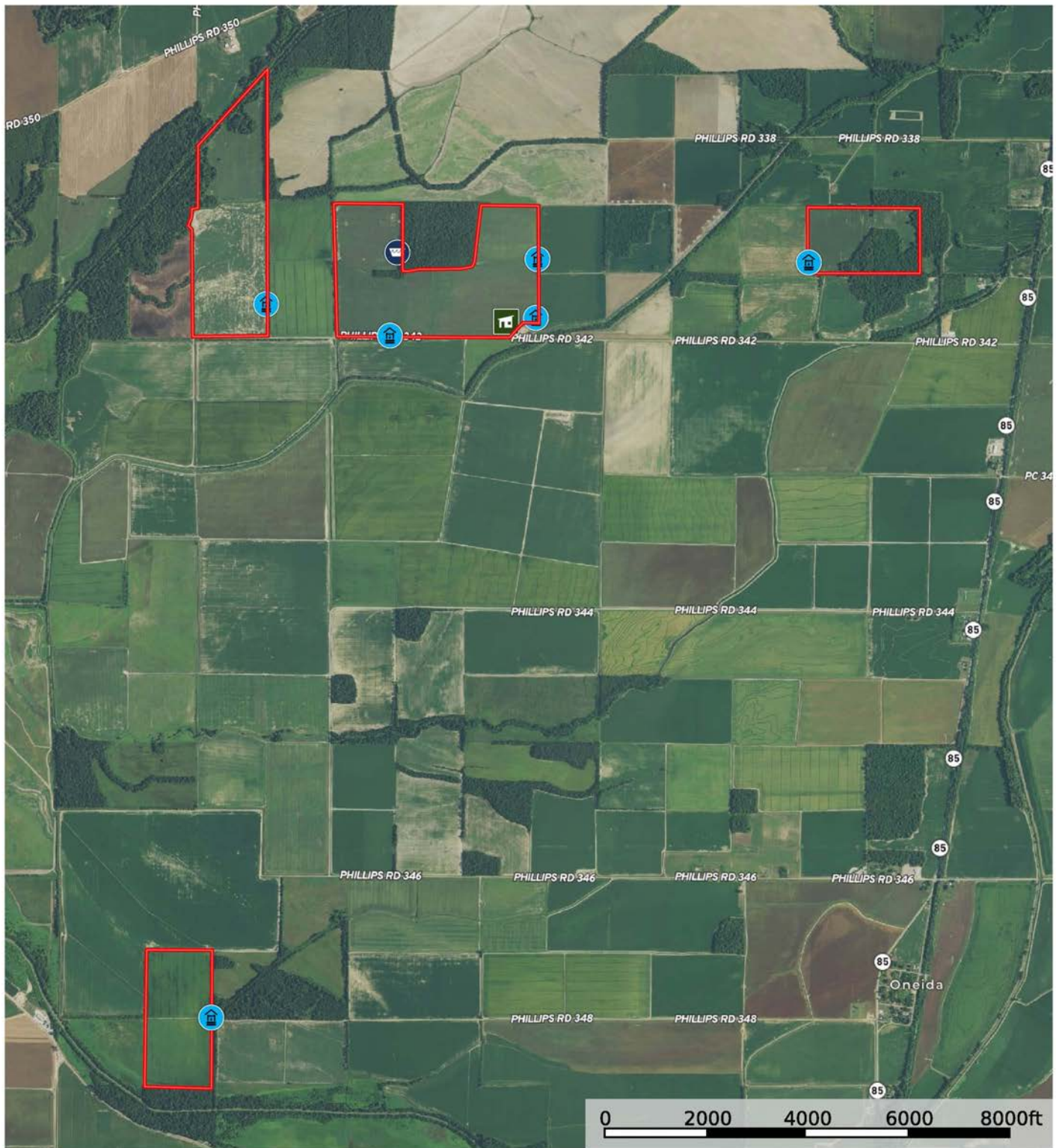


Boundary

Sindy Cruthis

The information contained herein was obtained from sources deemed to be reliable. MapRight Services makes no warranties or guarantees as to the completeness or accuracy thereof.

AERIAL MAP II

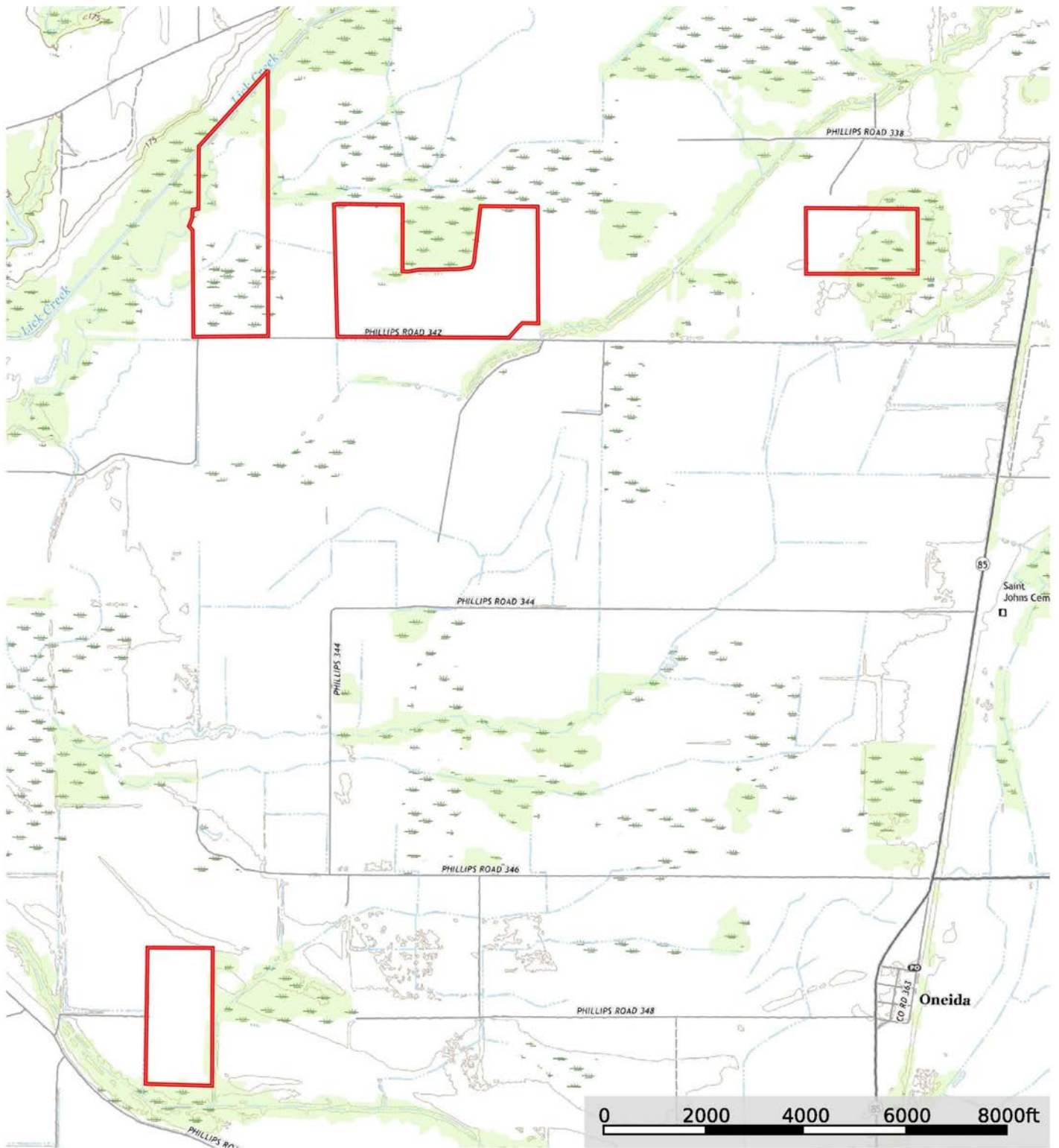


Well Shed / Shack Riser Boundary

Sindy Cruthis


The information contained herein was obtained from sources deemed to be reliable. MapRight Services makes no warranties or guarantees as to the completeness or accuracy thereof.

TOPOGRAPHY MAP

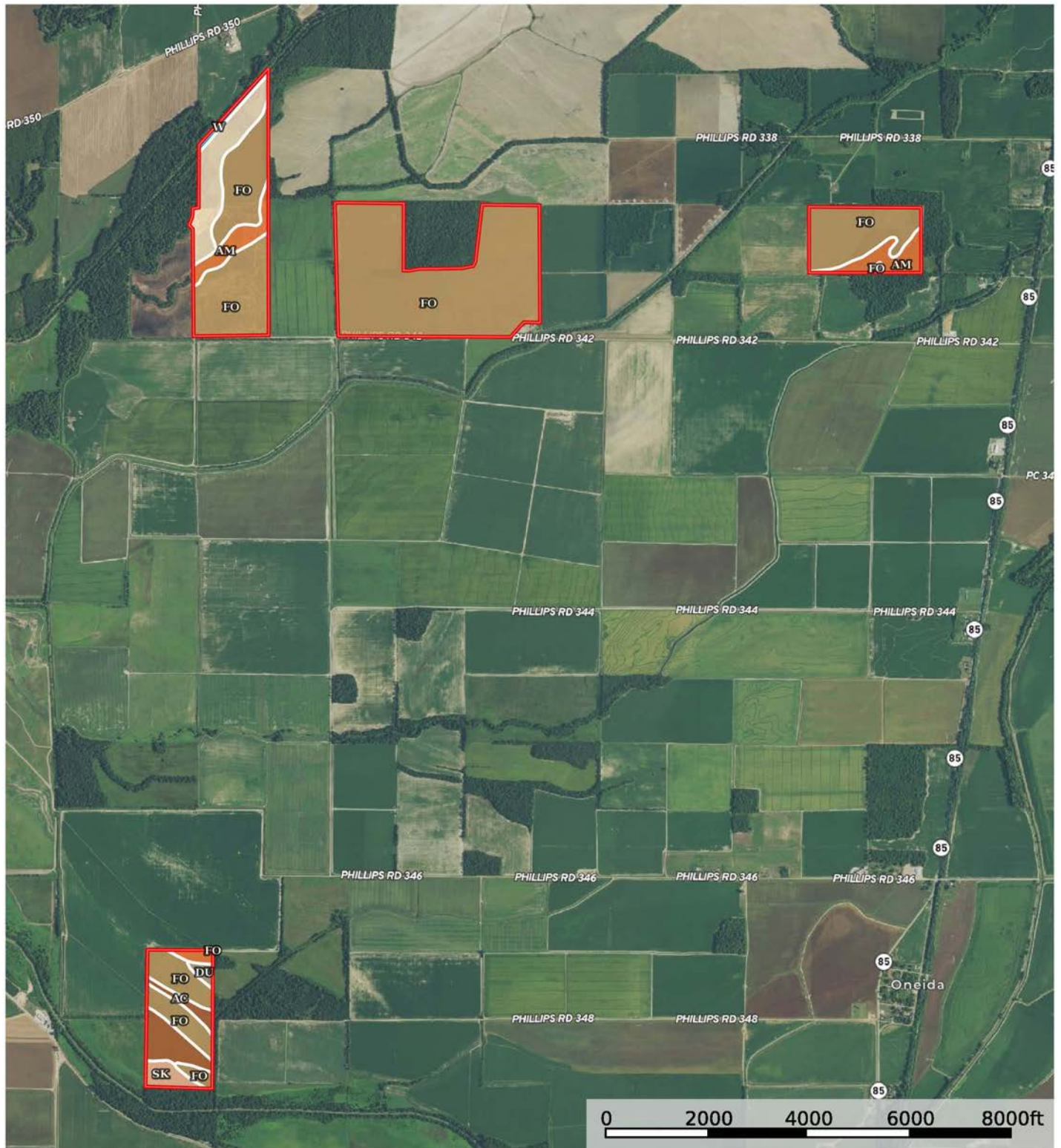


 Boundary

Sindy Cruthis


 The information contained herein was obtained from sources deemed to be reliable. MapRight Services makes no warranties or guarantees as to the completeness or accuracy thereof.

SOIL MAP



 Boundary

Sindy Cruthis

 The information contained herein was obtained from sources deemed to be reliable. MapRight Services makes no warranties or guarantees as to the completeness or accuracy thereof.

SOIL MAP KEY




SOIL CODE	SOIL DESCRIPTION	ACRES	%	CAP
Fo	Foley silt loam	376.9	76.2	3w
Am	Amagon silt loam	36.7	7.43	3w
Za	Zachary soils, frequently flooded	38.9	7.87	4w
W	Water	3.7	0.75	-
Ac	Alligator clay	25.4	5.13	3w
Du	Dundee silt loam, 0 to 1 percent slopes	3.4	0.69	2w
Sk	Sharkey soils, 0 to 1 percent slopes, frequently flooded	9.6	1.93	4w
TOTALS		494.6	100%	3.07

Capability Legend

Increased Limitations and Hazards

Decreased Adaptability and Freedom of Choice Users

Land, Capability

								
	1	2	3	4	5	6	7	8
'Wild Life'	•	•	•	•	•	•	•	•
Forestry	•	•	•	•	•	•	•	
Limited	•	•	•	•	•	•	•	
Moderate	•	•	•	•	•	•		
Intense	•	•	•	•	•			
Limited	•	•	•	•				
Moderate	•	•	•					
Intense	•	•						
Very Intense	•							

Grazing Cultivation

(c) climatic limitations (e) susceptibility to erosion

(s) soil limitations within the rooting zone (w) excess of water

FARM SERVICE AGENCY

FARM: 1231

Arkansas

U.S. Department of Agriculture

Prepared: 8/10/21 2:16 PM

Phillips

Farm Service Agency

Crop Year: 2021

Report ID: FSA-156EZ

Abbreviated 156 Farm Record

Page: 1 of 2

DISCLAIMER: This is data extracted from the web farm database. Because of potential messaging failures in MIDAS, this data is not guaranteed to be an accurate and complete representation of data contained in the MIDAS system, which is the system of record for Farm Records.

Operator Name

Farm Identifier

WESSON, ALEX

Farms Associated with Operator:

858, 1399, 1400, 1436

ARC/PLC G//F Eligibility: Eligible

CRP Contract Number(s): None

Farmland	Cropland	DCP Cropland	WBP	WRP	EWP	CRP Cropland	GRP	Farm Status	Number of Tracts
87.28	84.38	84.38	0.0	0.0	0.0	0.0	0.0	Active	1
State Conservation	Other Conservation	Effective DCP Cropland	Double Cropped	MPL/FWP					
0.0	0.0	84.38	0.0	0.0					

ARC/PLC					
PLC	ARC-CO	ARC-IC	PLC-Default	ARC-CO-Default	ARC-IC-Default
RICE-LGR	NONE	NONE	NONE	NONE	NONE

Crop	Base Acreage	PLC Yield	CCC-505 CRP Reduction
RICE-LONG GRAIN	79.5	6538	0.00
Total Base Acres:	79.5		

Tract Number: 2103 **Description** E6/2A

FSA Physical Location : Phillips, AR

ANSI Physical Location: Phillips, AR

BIA Range Unit Number:

HEL Status: NHEL: no agricultural commodity planted on undetermined fields

Wetland Status: Tract does not contain a wetland

WL Violations: None

Farmland	Cropland	DCP Cropland	WBP	WRP	EWP	CRP Cropland	GRP
87.28	84.38	84.38	0.0	0.0	0.0	0.0	0.0
State Conservation	Other Conservation	Effective DCP Cropland	Double Cropped	MPL/FWP			
0.0	0.0	84.38	0.0	0.0			

Crop	Base Acreage	PLC Yield	CCC-505 CRP Reduction
RICE-LONG GRAIN	79.5	6538	0.00
Total Base Acres:	79.5		

Owners: WESSON DELTA FARMS LLC

Other Producers: None

FARM SERVICE AGENCY

FARM: 1436

Arkansas

U.S. Department of Agriculture

Prepared: 8/10/21 2:17 PM

Phillips

Farm Service Agency

Crop Year: 2021

Report ID: FSA-156EZ

Abbreviated 156 Farm Record

Page: 2 of 2

DISCLAIMER: This is data extracted from the web farm database. Because of potential messaging failures in MIDAS, this data is not guaranteed to be an accurate and complete representation of data contained in the MIDAS system, which is the system of record for Farm Records.

Other Producers: None

Tract Number: 2526 Description F5/1A

FSA Physical Location : Phillips, AR

ANSI Physical Location: Phillips, AR

BIA Range Unit Number:

HEL Status: NHEL: no agricultural commodity planted on undetermined fields

Wetland Status: Tract does not contain a wetland

WL Violations: None

Farmland	Cropland	DCP Cropland	WBP	WRP	EWP	CRP Cropland	GRP
42.92	14.55	14.55	0.0	0.0	0.0	0.0	0.0
State Conservation	Other Conservation	Effective DCP Cropland	Double Cropped	MPL/FWP			
0.0	0.0	14.55	7.7	0.0			

Crop	Base Acreage	PLC Yield	CCC-505 CRP Reduction
WHEAT	6.1	39	0.00
SOYBEANS	9.8	15	0.00
Total Base Acres:	15.9		

Owners: MCCARTY, JANETTE
WESSON, ALEX

MCCARTY, TRACY SCOTT

Other Producers: None

FARM SERVICE AGENCY

Arkansas

Phillips

Report ID: FSA-156EZ

U.S. Department of Agriculture

Farm Service Agency

Abbreviated 156 Farm Record

FARM: 2605

Prepared: 8/10/21 2:15 PM

Crop Year: 2021

Page: 1 of 2

DISCLAIMER: This is data extracted from the web farm database. Because of potential messaging failures in MIDAS, this data is not guaranteed to be an accurate and complete representation of data contained in the MIDAS system, which is the system of record for Farm Records.

Operator Name

WESSON DELTA FARMS LLC

Farm Identifier

DIV OF 126

Farms Associated with Operator:

167, 1231, 1436, 1722, 3031, 4162, 4258

ARC/PLC G/F Eligibility: Eligible

CRP Contract Number(s): None

Farmland	Cropland	DCP Cropland	WBP	WRP	EWP	CRP Cropland	GRP	Farm Status	Number of Tracts
91.38	88.74	88.74	0.0	0.0	0.0	0.0	0.0	Active	1
State Conservation	Other Conservation	Effective DCP Cropland	Double Cropped	MPL/FWP					
0.0	0.0	88.74	0.0	0.0					

ARC/PLC					
PLC	ARC-CO	ARC-IC	PLC-Default	ARC-CO-Default	ARC-IC-Default
SORGH	SOYBN	NONE	NONE	NONE	NONE

Crop	Base Acreage	PLC Yield	CCC-505 CRP Reduction	HIP
GRAIN SORGHUM	7.5	61	0.00	
SOYBEANS	78.5	26	0.00	100
Total Base Acres:	86.0			

Tract Number: 2088 **Description** S19 T2S R3E J-6

FSA Physical Location : Phillips, AR

ANSI Physical Location: Phillips, AR

BIA Range Unit Number:

HEL Status: NHEL: no agricultural commodity planted on undetermined fields

Wetland Status: Tract does not contain a wetland

WL Violations: None

Farmland	Cropland	DCP Cropland	WBP	WRP	EWP	CRP Cropland	GRP
91.38	88.74	88.74	0.0	0.0	0.0	0.0	0.0
State Conservation	Other Conservation	Effective DCP Cropland	Double Cropped	MPL/FWP			
0.0	0.0	88.74	0.0	0.0			

Crop	Base Acreage	PLC Yield	CCC-505 CRP Reduction
GRAIN SORGHUM	7.5	61	0.00
SOYBEANS	78.5	26	0.00
Total Base Acres:	86.0		

Owners: WESSON DELTA FARMS LLC

FARM SERVICE AGENCY

Arkansas

Phillips

Report ID: FSA-156EZ

U.S. Department of Agriculture

Farm Service Agency

Abbreviated 156 Farm Record

FARM: 3031

Prepared: 8/10/21 2:14 PM

Crop Year: 2021

Page: 1 of 3

DISCLAIMER: This is data extracted from the web farm database. Because of potential messaging failures in MIDAS, this data is not guaranteed to be an accurate and complete representation of data contained in the MIDAS system, which is the system of record for Farm Records.

Operator Name

WESSON DELTA FARMS LLC

Farm Identifier

Farms Associated with Operator:

167, 1231, 1436, 1722, 2605, 4162, 4258

ARC/PLC G/I/F Eligibility: Eligible

CRP Contract Number(s): None

Farmland	Cropland	DCP Cropland	WBP	WRP	EWP	CRP Cropland	GRP	Farm Status	Number of Tracts
82.05	71.65	71.65	0.0	0.0	0.0	0.0	0.0	Active	3
State Conservation	Other Conservation	Effective DCP Cropland	Double Cropped	MPL/FWP					
0.0	0.0	71.65	0.0	0.0					

ARC/PLC					
PLC	ARC-CO	ARC-IC	PLC-Default	ARC-CO-Default	ARC-IC-Default
SORGH, RICE-LGR, RICE-MGR	SOYBN	NONE	NONE	NONE	NONE

Crop	Base Acreage	PLC Yield	CCC-505 CRP Reduction	HIP
GRAIN SORGHUM	8.7	62	0.00	
SOYBEANS	49.6	26	0.00	100
RICE-LONG GRAIN	9.2	5070	0.00	
RICE-MED GRAIN	0.4	5070	0.00	
Total Base Acres:	67.9			

Tract Number: 2306 **Description** S21 T2S R3E K-6

FSA Physical Location : Phillips, AR

ANSI Physical Location: Phillips, AR

BIA Range Unit Number:

HEL Status: NHEL: no agricultural commodity planted on undetermined fields

Wetland Status: Tract does not contain a wetland

WL Violations: None

Farmland	Cropland	DCP Cropland	WBP	WRP	EWP	CRP Cropland	GRP
41.12	33.45	33.45	0.0	0.0	0.0	0.0	0.0
State Conservation	Other Conservation	Effective DCP Cropland	Double Cropped	MPL/FWP			
0.0	0.0	33.45	0.0	0.0			

Crop	Base Acreage	PLC Yield	CCC-505 CRP Reduction
GRAIN SORGHUM	8.7	62	0.00
SOYBEANS	24.7	26	0.00

FARM SERVICE AGENCY

Arkansas

Phillips

Report ID: FSA-156EZ

U.S. Department of Agriculture

Farm Service Agency

Abbreviated 156 Farm Record

FARM: 3031

Prepared: 8/10/21 2:14 PM

Crop Year: 2021

Page: 2 of 3

DISCLAIMER: This is data extracted from the web farm database. Because of potential messaging failures in MIDAS, this data is not guaranteed to be an accurate and complete representation of data contained in the MIDAS system, which is the system of record for Farm Records.

Crop	Base Acreage	PLC Yield	CCC-505 CRP Reduction
Total Base Acres:	33.4		

Owners: WESSON DELTA FARMS LLC

Other Producers: None

Tract Number: 2307 Description S20 T2S R3E K-6

FSA Physical Location : Phillips, AR

ANSI Physical Location: Phillips, AR

BIA Range Unit Number:

HEL Status: NHEL: no agricultural commodity planted on undetermined fields

Wetland Status: Tract does not contain a wetland

WL Violations: None

Farmland	Cropland	DCP Cropland	WBP	WRP	EWP	CRP Cropland	GRP
19.94	19.7	19.7	0.0	0.0	0.0	0.0	0.0
State Conservation	Other Conservation	Effective DCP Cropland	Double Cropped	MPL/FWP			
0.0	0.0	19.7	0.0	0.0			

Crop	Base Acreage	PLC Yield	CCC-505 CRP Reduction
RICE-LONG GRAIN	4.8	5070	0.00
RICE-MED GRAIN	0.2	5070	0.00
SOYBEANS	12.9	26	0.00
Total Base Acres:	17.9		

Owners: WESSON DELTA FARMS LLC

Other Producers: None

FARM SERVICE AGENCY

Arkansas

Phillips

Report ID: FSA-156EZ

U.S. Department of Agriculture

Farm Service Agency

Abbreviated 156 Farm Record

FARM: 3031

Prepared: 8/10/21 2:14 PM

Crop Year: 2021

Page: 3 of 3

DISCLAIMER: This is data extracted from the web farm database. Because of potential messaging failures in MIDAS, this data is not guaranteed to be an accurate and complete representation of data contained in the MIDAS system, which is the system of record for Farm Records.

Tract Number: 2308 Description S20 T2S R3E K-6

FSA Physical Location : Phillips, AR ANSI Physical Location: Phillips, AR

BIA Range Unit Number:

HEL Status: NHEL: no agricultural commodity planted on undetermined fields

Wetland Status: Tract does not contain a wetland

WL Violations: None

Farmland	Cropland	DCP Cropland	WBP	WRP	EWP	CRP Cropland	GRP
20.99	18.5	18.5	0.0	0.0	0.0	0.0	0.0
State Conservation	Other Conservation	Effective DCP Cropland	Double Cropped	MPL/FWP			
0.0	0.0	18.5	0.0	0.0			

Crop	Base Acreage	PLC Yield	CCC-505 CRP Reduction
RICE-LONG GRAIN	4.4	5070	0.00
RICE-MED GRAIN	0.2	5070	0.00
SOYBEANS	12.0	26	0.00
Total Base Acres:	16.6		

Owners: WESSON DELTA FARMS LLC

Other Producers: None

FARM SERVICE AGENCY

Arkansas

Phillips

Report ID: FSA-156EZ

U.S. Department of Agriculture

Farm Service Agency

Abbreviated 156 Farm Record

FARM: 4162

Prepared: 8/10/21 2:16 PM

Crop Year: 2021

Page: 1 of 2

DISCLAIMER: This is data extracted from the web farm database. Because of potential messaging failures in MIDAS, this data is not guaranteed to be an accurate and complete representation of data contained in the MIDAS system, which is the system of record for Farm Records.

Operator Name

WESSON DELTA FARMS LLC

Farm Identifier

Recon Number

2014 - 34

Farms Associated with Operator:

167, 1231, 1436, 1722, 2605, 3031, 4258

ARC/PLC G/F Eligibility: Eligible

CRP Contract Number(s): None

Farmland	Cropland	DCP Cropland	WBP	WRP	EWP	CRP Cropland	GRP	Farm Status	Number of Tracts
56.81	36.76	36.76	0.0	0.0	0.0	0.0	0.0	Active	1
State Conservation	Other Conservation	Effective DCP Cropland	Double Cropped	MPL/FWP					
0.0	0.0	36.76	0.0	0.0					

ARC/PLC

PLC	ARC-CO	ARC-IC	PLC-Default	ARC-CO-Default	ARC-IC-Default
NONE	SOYBN	NONE	NONE	NONE	NONE

Crop	Base Acreage	PLC Yield	CCC-505 CRP Reduction	HIP
SOYBEANS	25.2	26	0.00	0
Total Base Acres:	25.2			

Tract Number: 7525

Description

FSA Physical Location : Phillips, AR

ANSI Physical Location: Phillips, AR

BIA Range Unit Number:

HEL Status: NHEL: no agricultural commodity planted on undetermined fields

Wetland Status: Tract contains a wetland or farmed wetland

WL Violations: None

Farmland	Cropland	DCP Cropland	WBP	WRP	EWP	CRP Cropland	GRP
56.81	36.76	36.76	0.0	0.0	0.0	0.0	0.0
State Conservation	Other Conservation	Effective DCP Cropland	Double Cropped	MPL/FWP			
0.0	0.0	36.76	0.0	0.0			

Crop	Base Acreage	PLC Yield	CCC-505 CRP Reduction
SOYBEANS	25.2	26	0.00
Total Base Acres:	25.2		

Owners: SMITH, TARSHA

SEALS, PAMELA NEGAL

Other Producers: None

FARM SERVICE AGENCY

FARM: 4258

Arkansas

U.S. Department of Agriculture

Prepared: 8/10/21 2:14 PM

Phillips

Farm Service Agency

Crop Year: 2021

Report ID: FSA-156EZ

Abbreviated 156 Farm Record

Page: 1 of 3

DISCLAIMER: This is data extracted from the web farm database. Because of potential messaging failures in MIDAS, this data is not guaranteed to be an accurate and complete representation of data contained in the MIDAS system, which is the system of record for Farm Records.

Operator Name	Farm Identifier	Recon Number
WESSON DELTA FARMS LLC		2016 - 16

Farms Associated with Operator:

167, 1231, 1436, 1722, 2605, 3031, 4162

ARC/PLC G/F Eligibility: Eligible

CRP Contract Number(s): None

Farmland	Cropland	DCP Cropland	WBP	WRP	EWP	CRP Cropland	GRP	Farm Status	Number of Tracts
167.58	160.73	160.73	0.0	0.0	0.0	0.0	0.0	Active	2
State Conservation	Other Conservation	Effective DCP Cropland	Double Cropped	MPL/FWP					
0.0	0.0	160.73	0.0	0.0					

ARC/PLC					
PLC	ARC-CO	ARC-IC	PLC-Default	ARC-CO-Default	ARC-IC-Default
SORGH, RICE-LGR, RICE-MGR SUP	SOYBN	NONE	NONE	NONE	NONE

Crop	Base Acreage	PLC Yield	CCC-505 CRP Reduction	HIP
GRAIN SORGHUM	12.78	59	0.00	
SOYBEANS	84.54	26	0.00	74
RICE-LONG GRAIN	29.32	4299	0.00	
RICE-MED GRAIN	8.36	4299	0.00	
SEED COTTON	14.24	1668	0.00	
UNA GENERIC	3.56	0	0.00	
Total Base Acres:	152.8			

FARM SERVICE AGENCY

Arkansas

Phillips

Report ID: FSA-156EZ

U.S. Department of Agriculture

Farm Service Agency

Abbreviated 156 Farm Record

FARM: 4258

Prepared: 8/10/21 2:14 PM

Crop Year: 2021

Page: 2 of 3

DISCLAIMER: This is data extracted from the web farm database. Because of potential messaging failures in MIDAS, this data is not guaranteed to be an accurate and complete representation of data contained in the MIDAS system, which is the system of record for Farm Records.

Tract Number: 1308 Description S20 T2S R3E J9

FSA Physical Location : Phillips, AR ANSI Physical Location: Phillips, AR

BIA Range Unit Number:

HEL Status: NHEL: no agricultural commodity planted on undetermined fields

Wetland Status: Tract does not contain a wetland

WL Violations: None

Farmland	Cropland	DCP Cropland	WBP	WRP	EWP	CRP Cropland	GRP
42.23	42.23	42.23	0.0	0.0	0.0	0.0	0.0
State Conservation	Other Conservation	Effective DCP Cropland	Double Cropped	MPL/FWP			
0.0	0.0	42.23	0.0	0.0			

Crop	Base Acreage	PLC Yield	CCC-505 CRP Reduction
RICE-LONG GRAIN	8.61	4299	0.00
RICE-MED GRAIN	2.45	4299	0.00
GRAIN SORGHUM	3.75	59	0.00
SOYBEANS	24.82	26	0.00
Total Base Acres:	39.63		

Owners: WESSON DELTA FARMS LLC

Other Producers: None

Tract Number: 7590 Description

FSA Physical Location : Phillips, AR ANSI Physical Location: Phillips, AR

BIA Range Unit Number:

HEL Status: NHEL: no agricultural commodity planted on undetermined fields

Wetland Status: Tract does not contain a wetland

WL Violations: None

Recon Number

2016- 10

Farmland	Cropland	DCP Cropland	WBP	WRP	EWP	CRP Cropland	GRP
125.35	118.5	118.5	0.0	0.0	0.0	0.0	0.0
State Conservation	Other Conservation	Effective DCP Cropland	Double Cropped	MPL/FWP			
0.0	0.0	118.5	0.0	0.0			

Crop	Base Acreage	PLC Yield	CCC-505 CRP Reduction
RICE-LONG GRAIN	20.71	4299	0.00
RICE-MED GRAIN	5.91	4299	0.00

FARM SERVICE AGENCY

Arkansas

Phillips

Report ID: FSA-156EZ

U.S. Department of Agriculture

Farm Service Agency

Abbreviated 156 Farm Record

FARM: 4258

Prepared: 8/10/21 2:14 PM

Crop Year: 2021

Page: 3 of 3

DISCLAIMER: This is data extracted from the web farm database. Because of potential messaging failures in MIDAS, this data is not guaranteed to be an accurate and complete representation of data contained in the MIDAS system, which is the system of record for Farm Records.

Crop	Base Acreage	PLC Yield	CCC-505 CRP Reduction
GRAIN SORGHUM	9.03	59	0.00
SOYBEANS	59.72	26	0.00
SEED COTTON	14.24	1668	0.00
UNA GENERIC	3.56	0	0.00
Total Base Acres:	113.17		

Owners: WESSON DELTA FARMS LLC

Other Producers: None

FARM SERVICE AGENCY



United States
Department of
Agriculture

Phillips County, Arkansas



Common Land Unit

- Non-Cropland; Cropland
- Tract Boundary

Wetland Determination Identifiers

- Restricted Use
- ▼ Limited Restrictions
- Exempt from Conservation Compliance Provisions

Imagery Year: 2019

2020 Program Year

Map Created January 30, 2020

Farm 1231

Tract 2103

Tract Cropland Total: 84.38 acres

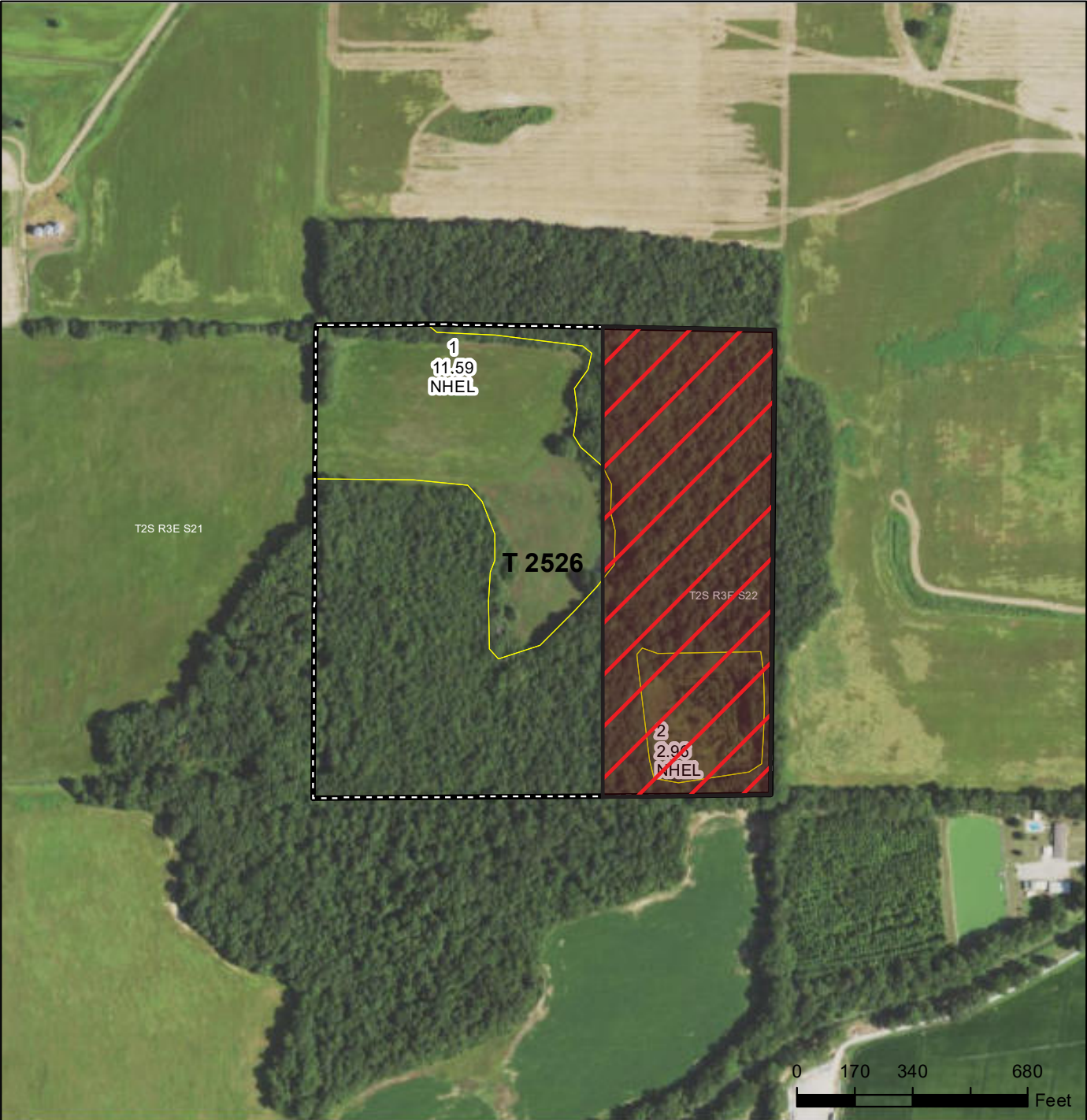
United States Department of Agriculture (USDA) Farm Service Agency (FSA) maps are for FSA Program administration only. This map does not represent a legal survey or reflect actual ownership; rather it depicts the information provided directly from the producer and/or National Agricultural Imagery Program (NAIP) imagery. The producer accepts the data 'as is' and assumes all risks associated with its use. USDA-FSA assumes no responsibility for actual or consequential damage incurred as a result of any user's reliance on this data outside FSA Programs. Wetland identifiers do not represent the size, shape, or specific determination of the area. Refer to your original determination (CPA-026 and attached maps) for exact boundaries and determinations or contact USDA Natural Resources Conservation Service (NRCS).

FARM SERVICE AGENCY



United States
Department of
Agriculture

Phillips County, Arkansas



Common Land Unit

- Non-Cropland; Cropland
- Tract Boundary

Wetland Determination Identifiers

- Restricted Use
- Limited Restrictions
- Exempt from Conservation Compliance Provisions

Imagery Year: 2019

2020 Program Year

Map Created January 30, 2020

Farm **1436**
Tract **2526**

Tract Cropland Total: 14.55 acres

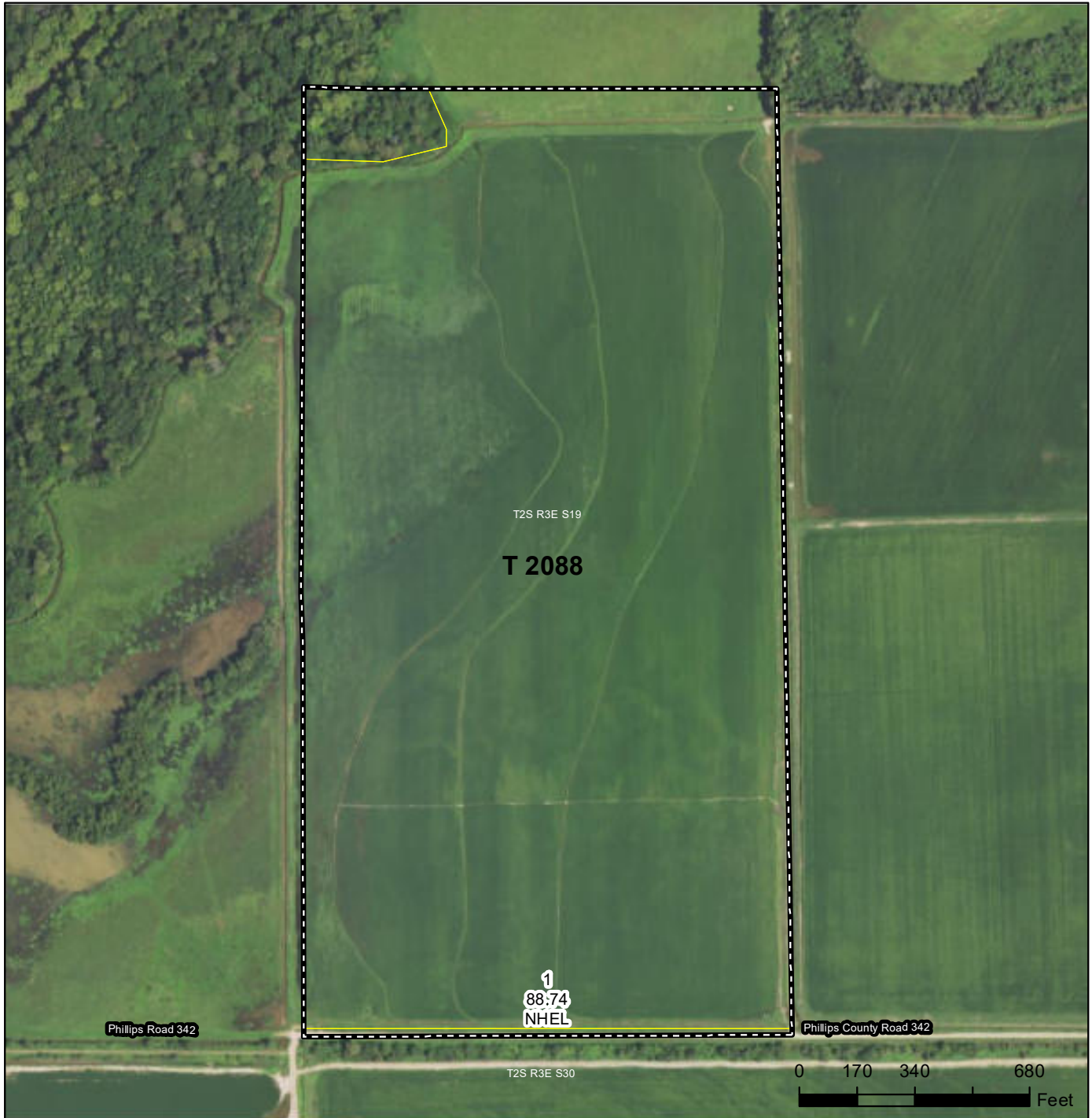
United States Department of Agriculture (USDA) Farm Service Agency (FSA) maps are for FSA Program administration only. This map does not represent a legal survey or reflect actual ownership; rather it depicts the information provided directly from the producer and/or National Agricultural Imagery Program (NAIP) imagery. The producer accepts the data 'as is' and assumes all risks associated with its use. USDA-FSA assumes no responsibility for actual or consequential damage incurred as a result of any user's reliance on this data outside FSA Programs. Wetland identifiers do not represent the size, shape, or specific determination of the area. Refer to your original determination (CPA-026 and attached maps) for exact boundaries and determinations or contact USDA Natural Resources Conservation Service (NRCS).

FARM SERVICE AGENCY



United States
Department of
Agriculture

Phillips County, Arkansas



Common Land Unit

- Non-Cropland; Cropland
- Tract Boundary

Wetland Determination Identifiers

- Restricted Use
- ▼ Limited Restrictions
- Exempt from Conservation Compliance Provisions

Imagery Year: 2019

2020 Program Year

Map Created January 30, 2020

Farm **2605**

Tract **2088**

Tract Cropland Total: 88.74 acres

United States Department of Agriculture (USDA) Farm Service Agency (FSA) maps are for FSA Program administration only. This map does not represent a legal survey or reflect actual ownership; rather it depicts the information provided directly from the producer and/or National Agricultural Imagery Program (NAIP) imagery. The producer accepts the data 'as is' and assumes all risks associated with its use. USDA-FSA assumes no responsibility for actual or consequential damage incurred as a result of any user's reliance on this data outside FSA Programs. Wetland identifiers do not represent the size, shape, or specific determination of the area. Refer to your original determination (CPA-026 and attached maps) for exact boundaries and determinations or contact USDA Natural Resources Conservation Service (NRCS).

FARM SERVICE AGENCY



United States
Department of
Agriculture

Phillips County, Arkansas



Common Land Unit

- Non-Cropland; Cropland
- Tract Boundary

Wetland Determination Identifiers

- Restricted Use
- Limited Restrictions
- Exempt from Conservation Compliance Provisions

Imagery Year: 2019

2020 Program Year

Map Created January 30, 2020

Farm **3031**
Tract **2306**

Tract Cropland Total: 33.45 acres

United States Department of Agriculture (USDA) Farm Service Agency (FSA) maps are for FSA Program administration only. This map does not represent a legal survey or reflect actual ownership; rather it depicts the information provided directly from the producer and/or National Agricultural Imagery Program (NAIP) imagery. The producer accepts the data 'as is' and assumes all risks associated with its use. USDA-FSA assumes no responsibility for actual or consequential damage incurred as a result of any user's reliance on this data outside FSA Programs. Wetland identifiers do not represent the size, shape, or specific determination of the area. Refer to your original determination (CPA-026 and attached maps) for exact boundaries and determinations or contact USDA Natural Resources Conservation Service (NRCS).

FARM SERVICE AGENCY



United States
Department of
Agriculture

Phillips County, Arkansas



Common Land Unit

- Non-Cropland; Cropland
- Tract Boundary

Wetland Determination Identifiers

- Restricted Use
- ▼ Limited Restrictions
- Exempt from Conservation Compliance Provisions

Imagery Year: 2019

2020 Program Year

Map Created January 30, 2020

Farm **3031**

Tract **2307**

Tract Cropland Total: 19.70 acres

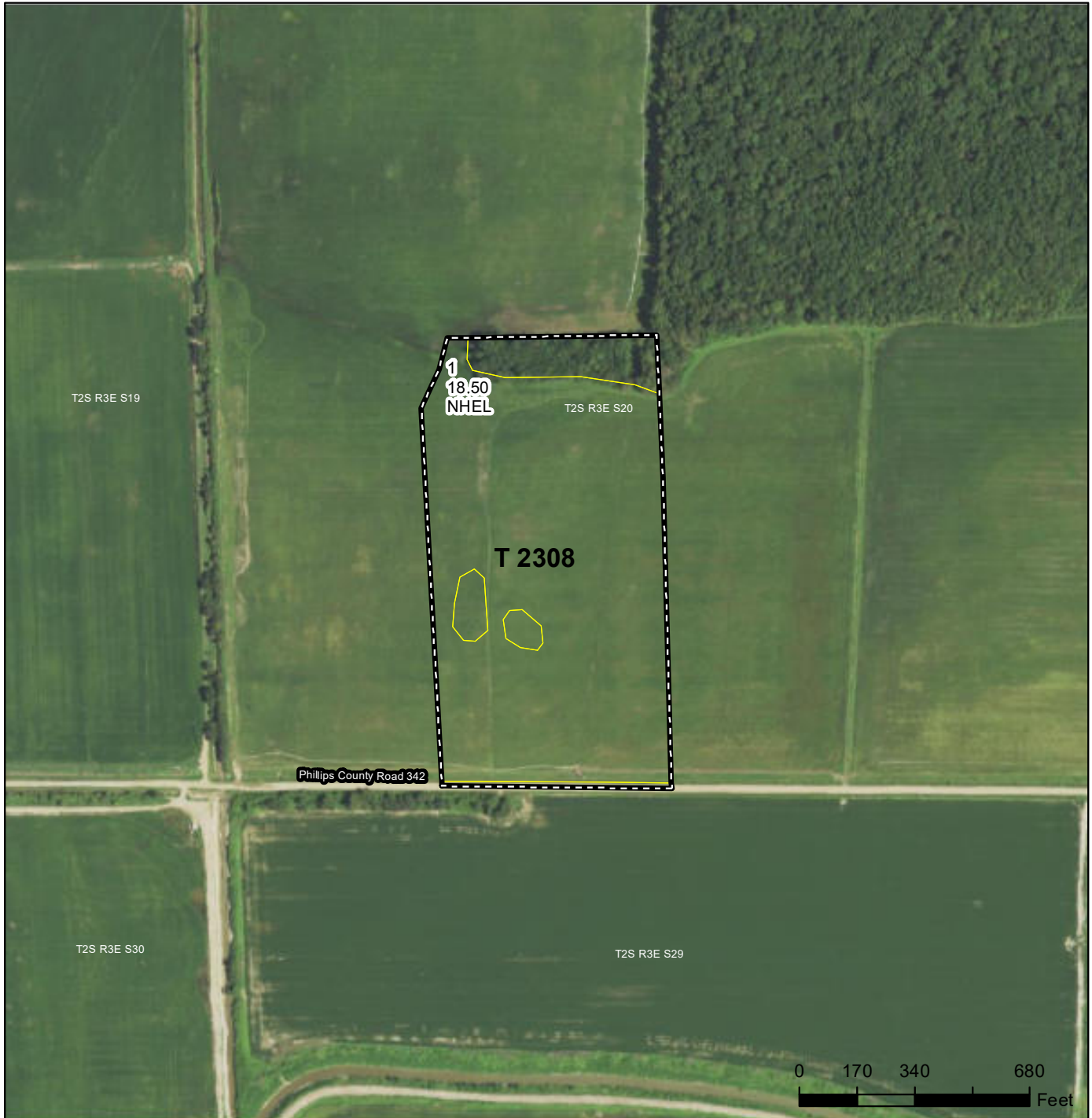
United States Department of Agriculture (USDA) Farm Service Agency (FSA) maps are for FSA Program administration only. This map does not represent a legal survey or reflect actual ownership; rather it depicts the information provided directly from the producer and/or National Agricultural Imagery Program (NAIP) imagery. The producer accepts the data 'as is' and assumes all risks associated with its use. USDA-FSA assumes no responsibility for actual or consequential damage incurred as a result of any user's reliance on this data outside FSA Programs. Wetland identifiers do not represent the size, shape, or specific determination of the area. Refer to your original determination (CPA-026 and attached maps) for exact boundaries and determinations or contact USDA Natural Resources Conservation Service (NRCS).

FARM SERVICE AGENCY



United States
Department of
Agriculture

Phillips County, Arkansas



Common Land Unit

- Non-Cropland; Cropland
- Tract Boundary

Wetland Determination Identifiers

- Restricted Use
- ▼ Limited Restrictions
- Exempt from Conservation Compliance Provisions

Imagery Year: 2019

2020 Program Year

Map Created January 30, 2020

Farm **3031**

Tract **2308**

Tract Cropland Total: 18.50 acres

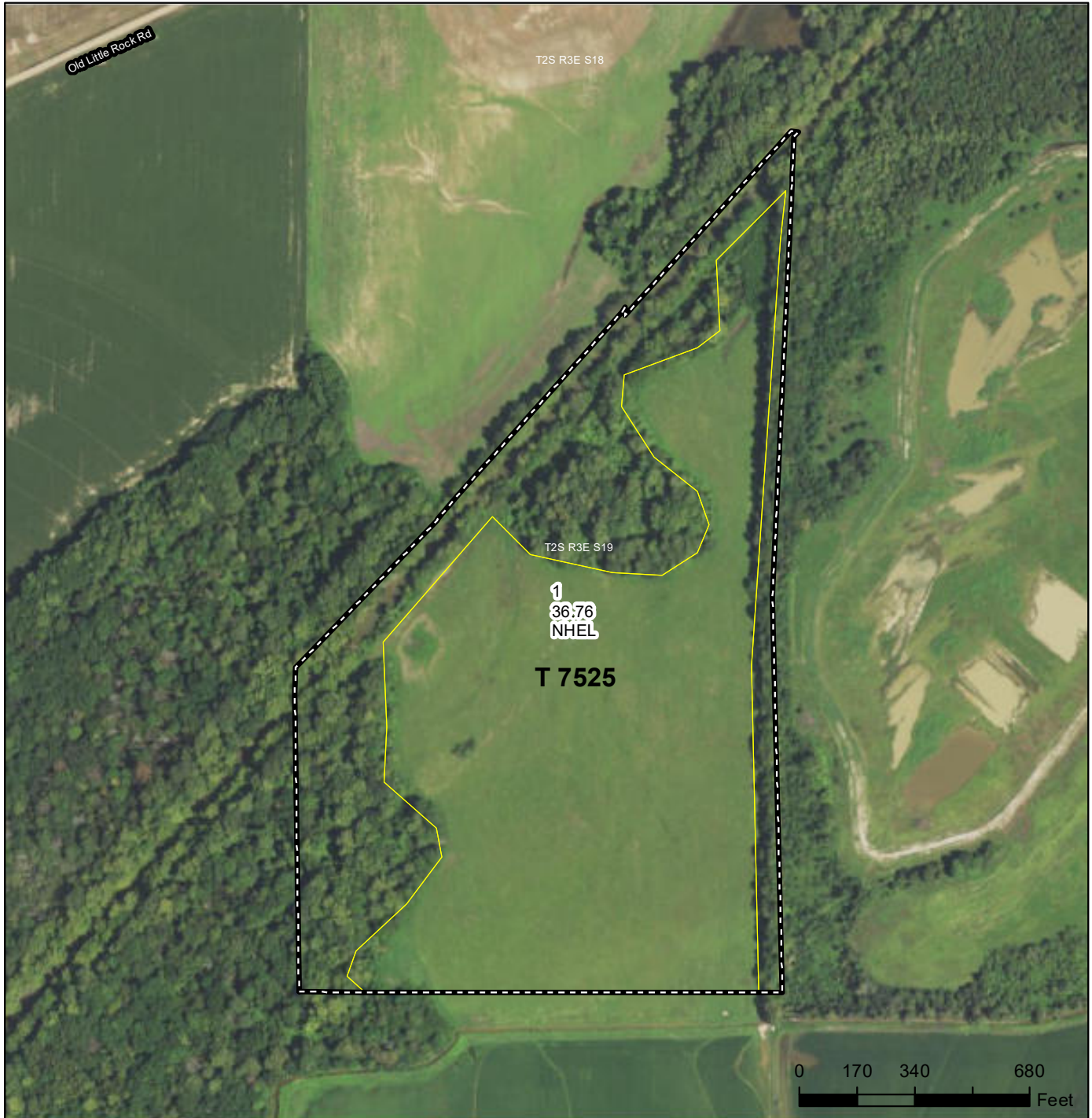
United States Department of Agriculture (USDA) Farm Service Agency (FSA) maps are for FSA Program administration only. This map does not represent a legal survey or reflect actual ownership; rather it depicts the information provided directly from the producer and/or National Agricultural Imagery Program (NAIP) imagery. The producer accepts the data 'as is' and assumes all risks associated with its use. USDA-FSA assumes no responsibility for actual or consequential damage incurred as a result of any user's reliance on this data outside FSA Programs. Wetland identifiers do not represent the size, shape, or specific determination of the area. Refer to your original determination (CPA-026 and attached maps) for exact boundaries and determinations or contact USDA Natural Resources Conservation Service (NRCS).

FARM SERVICE AGENCY



United States
Department of
Agriculture

Phillips County, Arkansas



Common Land Unit

- Non-Cropland; Cropland
- Tract Boundary

Wetland Determination Identifiers

- Restricted Use
- ▼ Limited Restrictions
- Exempt from Conservation Compliance Provisions

Imagery Year: 2019

2020 Program Year

Map Created January 30, 2020

Farm 4162

Tract 7525

Tract Cropland Total: 36.76 acres

United States Department of Agriculture (USDA) Farm Service Agency (FSA) maps are for FSA Program administration only. This map does not represent a legal survey or reflect actual ownership; rather it depicts the information provided directly from the producer and/or National Agricultural Imagery Program (NAIP) imagery. The producer accepts the data 'as is' and assumes all risks associated with its use. USDA-FSA assumes no responsibility for actual or consequential damage incurred as a result of any user's reliance on this data outside FSA Programs. Wetland identifiers do not represent the size, shape, or specific determination of the area. Refer to your original determination (CPA-026 and attached maps) for exact boundaries and determinations or contact USDA Natural Resources Conservation Service (NRCS).

FARM SERVICE AGENCY



United States
Department of
Agriculture

Phillips County, Arkansas



Common Land Unit

- Non-Cropland; Cropland
- Tract Boundary

Wetland Determination Identifiers

- Restricted Use
- ▼ Limited Restrictions
- Exempt from Conservation Compliance Provisions

Imagery Year: 2019

2020 Program Year

Map Created January 30, 2020

Farm **4258**

Tract **1308**

Tract Cropland Total: 42.23 acres

United States Department of Agriculture (USDA) Farm Service Agency (FSA) maps are for FSA Program administration only. This map does not represent a legal survey or reflect actual ownership; rather it depicts the information provided directly from the producer and/or National Agricultural Imagery Program (NAIP) imagery. The producer accepts the data 'as is' and assumes all risks associated with its use. USDA-FSA assumes no responsibility for actual or consequential damage incurred as a result of any user's reliance on this data outside FSA Programs. Wetland identifiers do not represent the size, shape, or specific determination of the area. Refer to your original determination (CPA-026 and attached maps) for exact boundaries and determinations or contact USDA Natural Resources Conservation Service (NRCS).

FARM SERVICE AGENCY



United States
Department of
Agriculture

Phillips County, Arkansas



Common Land Unit

- Non-Cropland; Cropland
- Tract Boundary

Wetland Determination Identifiers

- Restricted Use
- Limited Restrictions
- Exempt from Conservation Compliance Provisions

Imagery Year: 2019

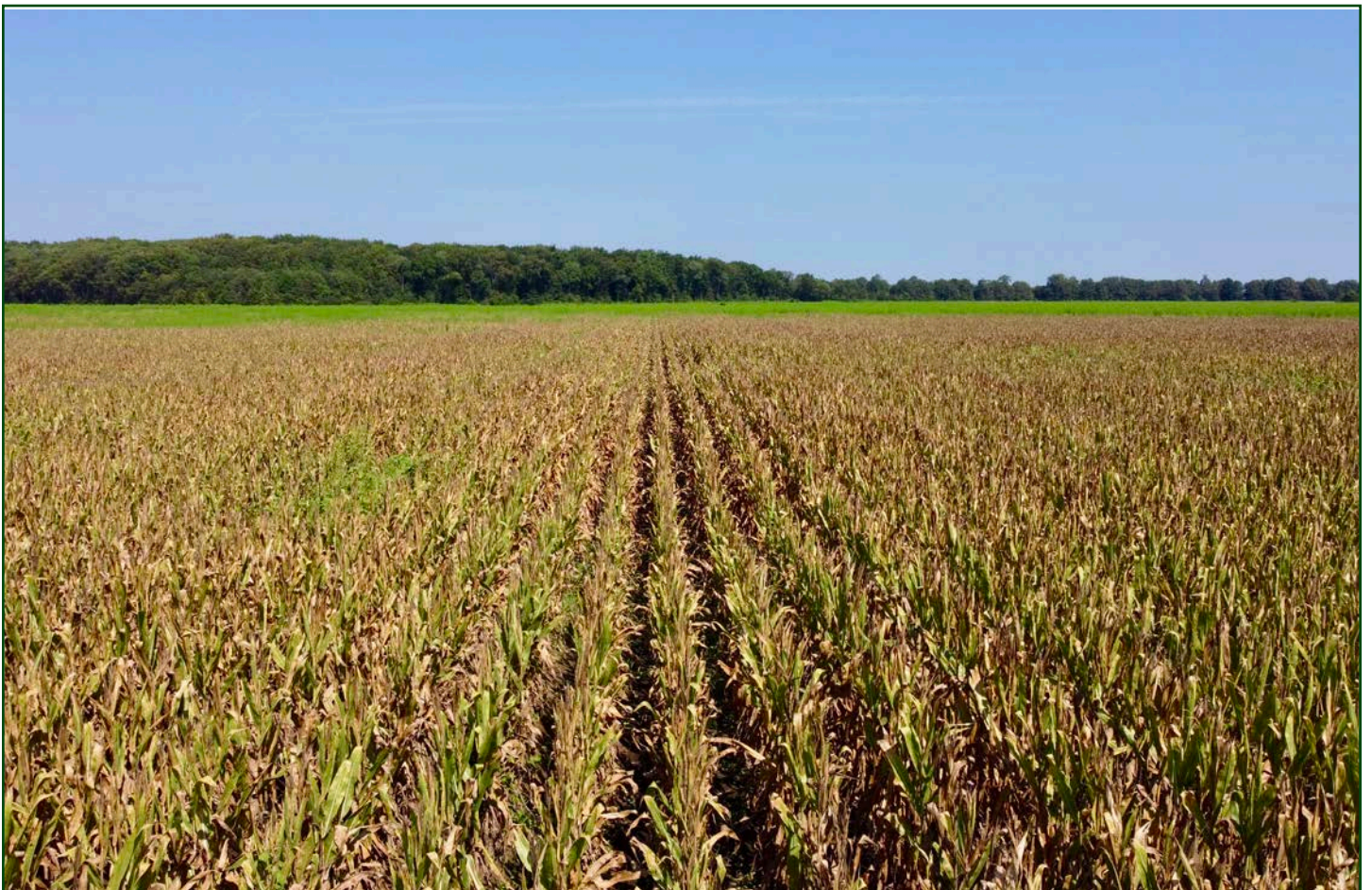
2020 Program Year

Map Created January 30, 2020

Farm 4258
Tract 7590

Tract Cropland Total: 118.50 acres

United States Department of Agriculture (USDA) Farm Service Agency (FSA) maps are for FSA Program administration only. This map does not represent a legal survey or reflect actual ownership; rather it depicts the information provided directly from the producer and/or National Agricultural Imagery Program (NAIP) imagery. The producer accepts the data 'as is' and assumes all risks associated with its use. USDA-FSA assumes no responsibility for actual or consequential damage incurred as a result of any user's reliance on this data outside FSA Programs. Wetland identifiers do not represent the size, shape, or specific determination of the area. Refer to your original determination (CPA-026 and attached maps) for exact boundaries and determinations or contact USDA Natural Resources Conservation Service (NRCS).









NOTES

[illegible]



401 Autumn Road | Little Rock, AR 72211
501.374.3411 (office) | 501.421.0031 (fax)

info@lilerealestate.com | www.lilerealestate.com



AGRICULTURE | RECREATION | TIMBERLAND

Traditional Brokerage + Sealed Bids + Consulting

LICENSED IN ARKANSAS, LOUISIANA, MISSISSIPPI, TEXAS AND TENNESSEE