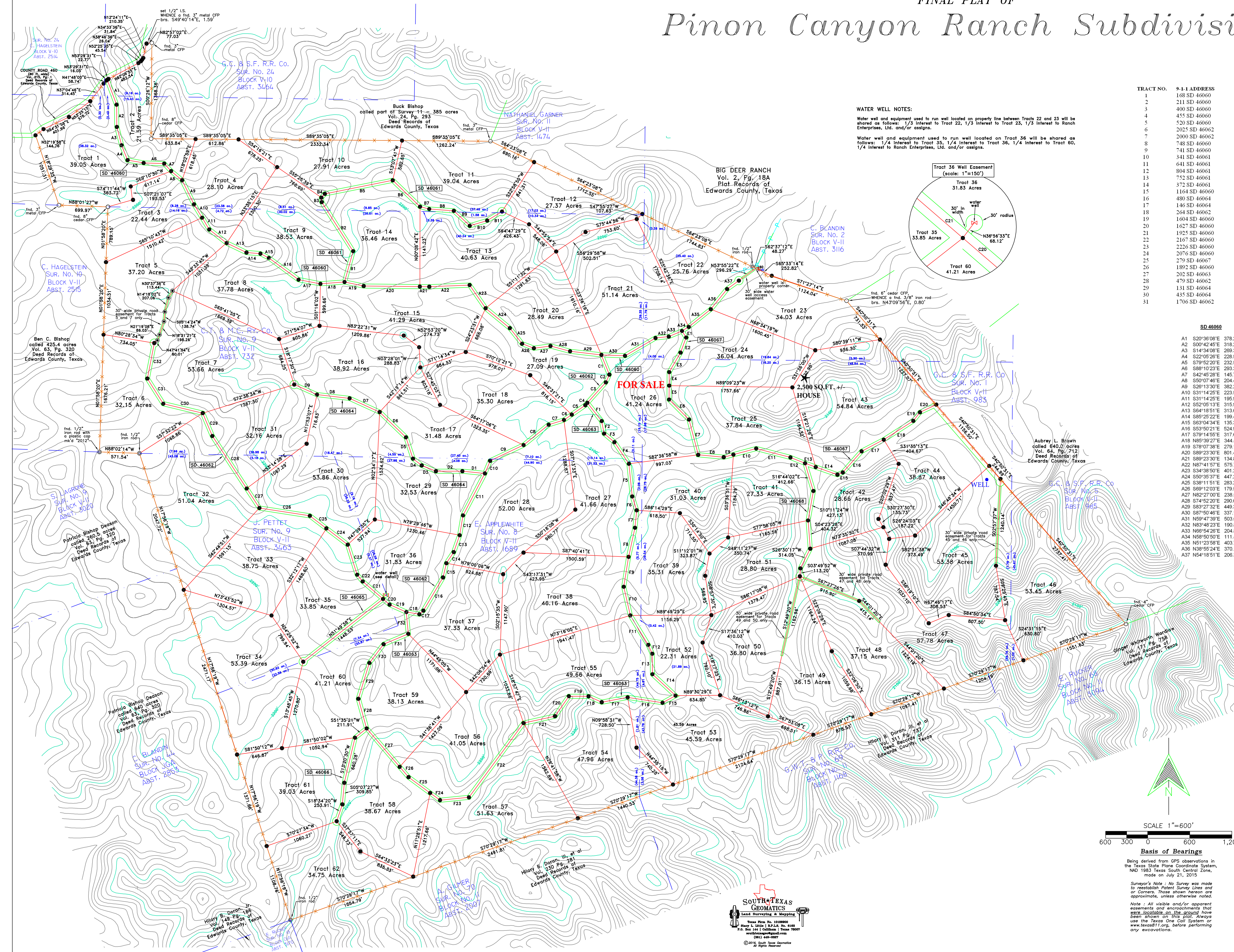


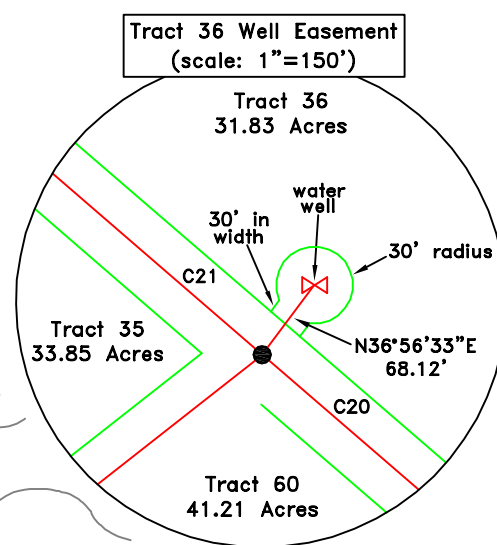
FINAL PLAT OF
Pinon Canyon Ranch Subdivision



WATER WELL NOTES:

Water well and equipment used to run well located on property line between Tracts 22 and 23 will be shared as follows: 1/3 interest to Tract 22, 1/3 interest to Tract 23, 1/3 interest to Ranch Enterprises, Ltd. and/or assigns.

Water well and equipment used to run well located on Tract 36 will be shared as follows: 1/4 interest to Tract 35, 1/4 interest to Tract 36, 1/4 interest to Tract 60, 1/4 interest to Ranch Enterprises, Ltd. and/or assigns.



TRACT NO.	9-1-1 ADDRESS	CITY, STATE, ZIP CODE	TRACT NO.	9-1-1 ADDRESS	CITY, STATE, ZIP CODE
1	168 SD 46060	Rocksprings, TX 78880	32	1687 SD 46062	Rocksprings, TX 78880
2	211 SD 46060	Rocksprings, TX 78880	33	1447 SD 46062	Rocksprings, TX 78880
3	400 SD 46060	Rocksprings, TX 78880	34	268 SD 46065	Rocksprings, TX 78880
4	455 SD 46060	Rocksprings, TX 78880	35	115 SD 46062	Rocksprings, TX 78880
5	520 SD 46060	Rocksprings, TX 78880	36	1040 SD 46062	Rocksprings, TX 78880
6	2025 SD 46062	Rocksprings, TX 78880	37	867 SD 46062	Rocksprings, TX 78880
7	2000 SD 46062	Rocksprings, TX 78880	38	520 SD 46063	Rocksprings, TX 78880
8	748 SD 46060	Rocksprings, TX 78880	39	451 SD 46063	Rocksprings, TX 78880
9	741 SD 46060	Rocksprings, TX 78880	40	223 SD 46063	Rocksprings, TX 78880
10	341 SD 46061	Rocksprings, TX 78880	41	616 SD 46067	Rocksprings, TX 78880
11	641 SD 46061	Rocksprings, TX 78880	42	810 SD 46067	Rocksprings, TX 78880
12	804 SD 46061	Rocksprings, TX 78880	43	913 SD 46067	Rocksprings, TX 78880
13	752 SD 46061	Rocksprings, TX 78880	44	1048 SD 46067	Rocksprings, TX 78880
14	372 SD 46061	Rocksprings, TX 78880	45	1300 SD 46067	Rocksprings, TX 78880
15	1164 SD 46060	Rocksprings, TX 78880	46	1396 SD 46067	Rocksprings, TX 78880
16	480 SD 46064	Rocksprings, TX 78880	47	245 SD 46068	Rocksprings, TX 78880
17	146 SD 46064	Rocksprings, TX 78880	48	259 SD 46068	Rocksprings, TX 78880
18	264 SD 46062	Rocksprings, TX 78880	49	299 SD 46068	Rocksprings, TX 78880
19	1604 SD 46060	Rocksprings, TX 78880	50	346 SD 46068	Rocksprings, TX 78880
20	1627 SD 46060	Rocksprings, TX 78880	51	286 SD 46068	Rocksprings, TX 78880
21	1925 SD 46060	Rocksprings, TX 78880	52	729 SD 46063	Rocksprings, TX 78880
22	2167 SD 46060	Rocksprings, TX 78880	53	911 SD 46063	Rocksprings, TX 78880
23	2226 SD 46060	Rocksprings, TX 78880	54	1143 SD 46063	Rocksprings, TX 78880
24	2076 SD 46060	Rocksprings, TX 78880	55	1174 SD 46063	Rocksprings, TX 78880
25	279 SD 46067	Rocksprings, TX 78880	56	1504 SD 46063	Rocksprings, TX 78880
26	1892 SD 46060	Rocksprings, TX 78880	57	1630 SD 46063	Rocksprings, TX 78880
27	202 SD 46063	Rocksprings, TX 78880	58	1841 SD 46063	Rocksprings, TX 78880
28	479 SD 46062	Rocksprings, TX 78880	59	2072 SD 46063	Rocksprings, TX 78880
29	131 SD 46064	Rocksprings, TX 78880	60	2123 SD 46063	Rocksprings, TX 78880
30	435 SD 46064	Rocksprings, TX 78880	61	166 SD 46066	Rocksprings, TX 78880
31	1706 SD 46062	Rocksprings, TX 78880	62	267 SD 46066	Rocksprings, TX 78880

SD 46060

A1	S20°36'08"E	378.21'
A2	S20°42'45"E	318.22'
A3	S14°34'08"E	298.38'
A4	S22°05'28"E	228.52'
A5	S79°52'20"E	232.58'
A6	S88°10'21"E	293.32'
A7	S42°45'28"E	145.75'
A8	S50°07'48"E	204.41'
A9	S28°13'30"E	382.23'
A10	S31°14'25"E	223.51'
A11	S31°14'25"E	195.96'
A12	S52°05'13"E	315.96'
A13	S64°18'51"E	313.09'
A14	S85°25'22"E	198.40'
A15	S63°04'34"E	135.30'
A16	S53°50'21"E	524.84'
A17	S79°14'55"E	317.62'
A18	N65°39'27"E	344.46'
A19	S78°07'36"E	279.15'
A20	S89°23'30"E	801.46'
A21	S89°23'30"E	134.87'
A22	N67°41'57"E	575.79'
A23	S34°38'07"E	401.23'
A24	S50°35'37"E	447.29'
A25	S38°11'51"E	283.24'
A26	S69°12'03"E	179.54'
A27	N62°21'02"E	238.50'
A28	S74°52'20"E	290.01'
A29	S83°27'32"E	449.36'
A30	S87°50'46"E	337.18'
A31	N69°47'39"E	503.65'
A32	N83°48'23"E	503.65'
A33	N66°54'25"E	204.80'
A34	N58°50'50"E	111.40'
A35	N51°23'38"E	403.71'
A36	S38°55'24"E	370.11'
A37	N54°18'51"E	206.33'

SD 46061

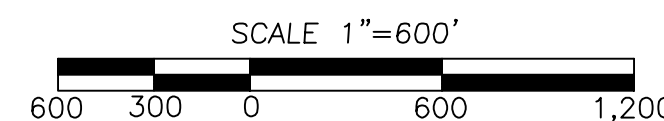
B1	N15°32'57"E	456.02'
B2	N32°31'16"W	831.49'
B3	N04°57'07"W	63.74'
B4	N42°33'23"E	73.33'
B5	N78°44'33"E	987.44'
B6	S46°04'11"E	641.15'
B7	S75°28'39"E	135.16'
B8	S85°43'24"E	352.34'
B9	S48°56'04"E	310.96'
B10	N73°23'07"E	256.89'
B11	N58°49'41"E	247.45'

SD 46062

C1	S21°57'47"E	303.65'
C2	S24°12'54"W	121.09'
C3	S42°08'33"W	362.86'
C4	S40°49'30"W	46.29'
C5	S55°15'17"W	234.08'
C6	S55°15'17"W	135.39'
C7	S72°50'08"W	228.25'
C8	S50°52'32"W	461.29'
C9	S64°49'21"W	527.91'
C10	S22°24'14"W	194.99'
C11	S27°34'36"W	675.21'
C12	S09°32'10"W	298.98'
C13	S19°24'09"W	255.30'
C14	S33°26'42"W	189.63'
C15	S13°13'34"W	206.76'
C16	S30°37'15"W	550.53'
C17	S48°16'59"E	78.98'
C18	N80°39'25"W	188.03'
C19	N65°58'36"W	281.85'
C20	N49°11'36"W	123.37'
C21	N49°11'36"W	383.37'
C22	N39°34'03"W	123.99'
C23	N17°26'49"W	448.42'
C24	N62°41'09"W	393.07'
C25	N52°41'09"W	296.08'

LEGEND

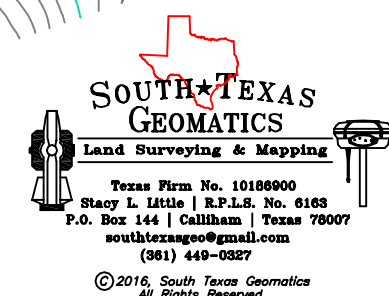
- Denotes 1/2" iron stake with cap stamped "LITTLE 6163" set
- Iron stake found, as noted
- Corner Fence Post found, as noted
- Denotes 8" spike with washer engraved "LITTLE 6163" set
- ✕ Water well
- Wire fence
- Electric
- Potent line



Basis of Bearings

Being derived from GPS observations in the Texas State Plane Coordinate System, NAD 1983 Texas South Central Zone, made on July 21, 2015

Surveyor's Note: No Survey was made to reestablish Potent Survey Lines and/or Corners. Those shown hereon are approximate, unless otherwise noted.
Note: All visible and/or apparent easements and encroachments that were located on the ground have been shown on this plat. Always use the Texas One Map System or www.texas811.org, before performing any excavations.



PRELIMINARY - THIS DOCUMENT SHALL NOT BE FILED FOR ANY PURPOSE

Stacy L. Little
R.P.L.S. No. 0163
South Texas Geomatics
Land Surveying & Mapping
P.O. Box 144
Callheim, Texas 76007
(817) 448-0807

SHEET 1 OF 1
SCALE 1"=600'
DATE _____
J.O. # _____