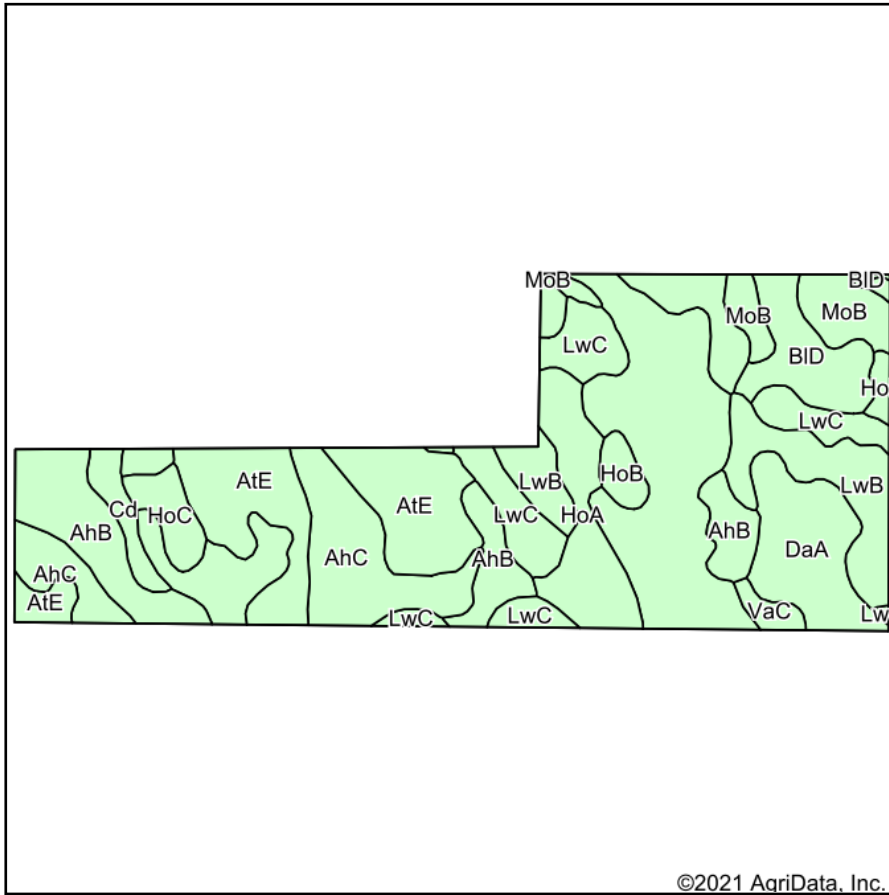
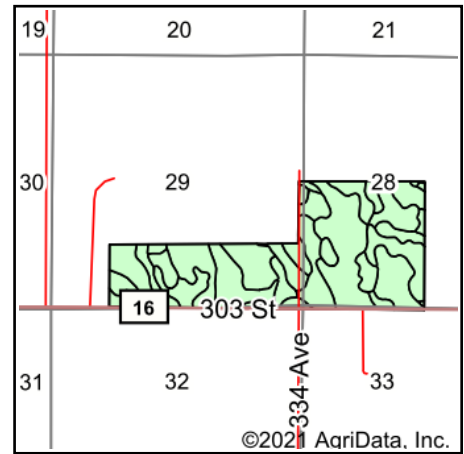


Soils Map



Soils data provided by USDA and NRCS.



State: **South Dakota**
 County: **Gregory**
 Location: **29-95N-73W**
 Township: **Carlock**
 Acres: **279.67**
 Date: **9/13/2021**

ADVANTAGE
Land Co.

Maps Provided By:



© AgriData, Inc. 2021

www.AgriDataInc.com



Area Symbol: SD053, Soil Area Version: 22

Code	Soil Description	Acres	Percent of field	Non-Irr Class *c	Irr Class *c	Productivity Index
Wh	Whitelake fine sandy loam	44.40	15.9%	IVe		43
AtE	Anselmo-Tassel fine sandy loams, 6 to 25 percent slopes	38.61	13.8%	VIe		13
AhC	Anselmo-Holt fine sandy loams, 6 to 9 percent slopes	38.50	13.8%	IVe		42
AhB	Anselmo-Holt fine sandy loams, 2 to 6 percent slopes	35.68	12.8%	IIIe		52
LwC	Lakoma-Wewela complex, 6 to 9 percent slopes	23.07	8.2%	IVe		42
LwB	Lakoma-Wewela complex, 2 to 6 percent slopes	21.26	7.6%	IIIe		50
DaA	Dunday loamy fine sand, 0 to 3 percent slopes	19.03	6.8%	IVe	IIIe	50
HoA	Holt fine sandy loam, 0 to 3 percent slopes	16.76	6.0%	IIIe	IIIe	59
BID	Boro-Lakoma silty clays, 9 to 15 percent slopes	13.25	4.7%	VIe		39
MoB	Millboro silty clay, 3 to 6 percent slopes	10.37	3.7%	IIIe	IIIe	79
HoC	Holt fine sandy loam, 6 to 9 percent slopes	5.67	2.0%	IVe	IVe	45
HoB	Holt fine sandy loam, 3 to 6 percent slopes	4.94	1.8%	IIIe	IIIe	53
Cd	Cass fine sandy loam, channeled	4.75	1.7%	VIw		32
VaC	Valentine loamy fine sand, 3 to 9 percent slopes	2.37	0.8%	VIe	IVe	18
Bb	Bon loam, 0 to 2 percent slopes, rarely flooded	1.01	0.4%	IIc		84
Weighted Average						42.9

*c: Using Capabilities Class Dominant Condition Aggregation Method
 Soils data provided by USDA and NRCS.