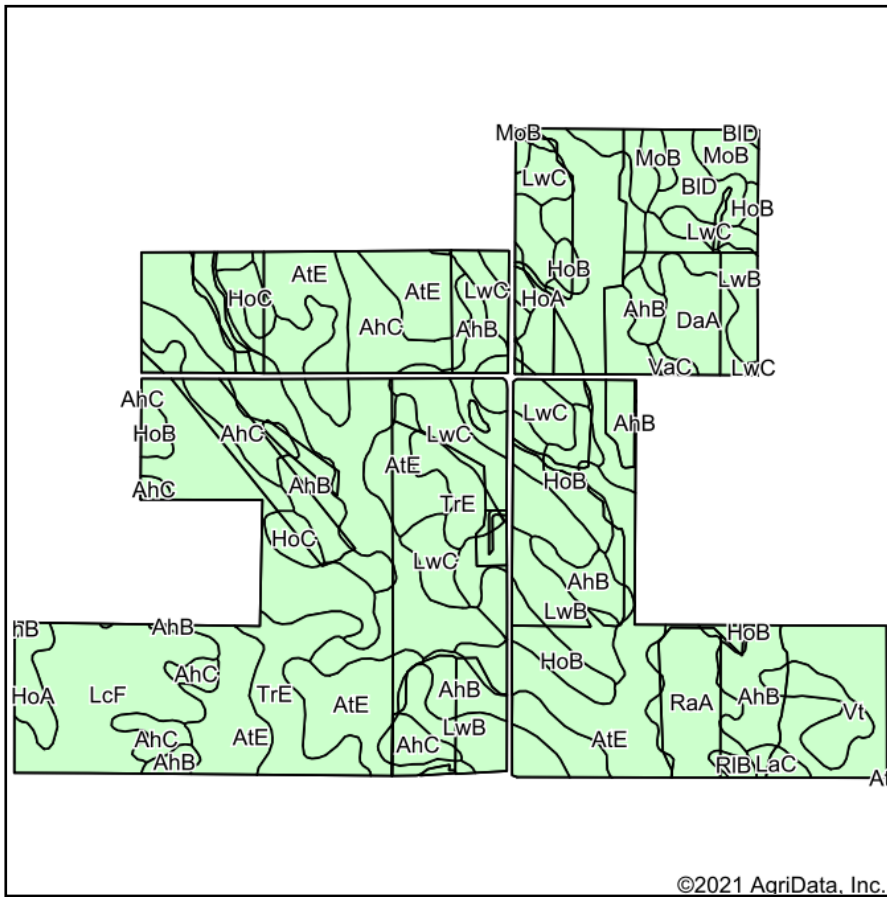
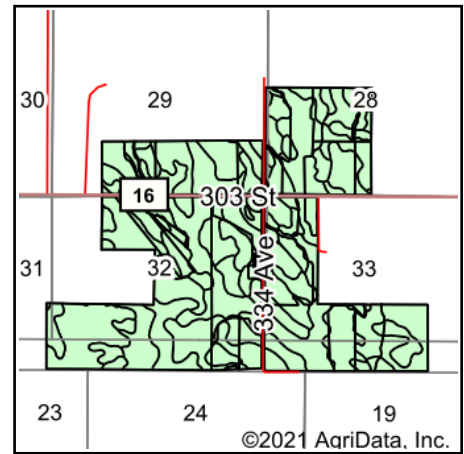


Soils Map



Soils data provided by USDA and NRCS.



State: **South Dakota**
 County: **Gregory**
 Location: **32-95N-73W**
 Township: **Carlock**
 Acres: **881.9**
 Date: **9/10/2021**

ADVANTAGE
Land Co.

Maps Provided By:

 CUSTOMIZED ONLINE MAPPING
 © AgriData, Inc. 2021 www.AgriDataInc.com



Area Symbol: SD053, Soil Area Version: 22

Code	Soil Description	Acres	Percent of field	Non-Irr Class	Irr Class	Productivity Index
AtE	Anselmo-Tassel fine sandy loams, 6 to 25 percent slopes	190.90	21.6%	Vle		13
AhB	Anselmo-Holt fine sandy loams, 2 to 6 percent slopes	142.64	16.2%	IIle	IIle	52
AhC	Anselmo-Holt fine sandy loams, 6 to 9 percent slopes	113.33	12.9%	IVe	IVe	42
LwC	Lakoma-Wewela complex, 6 to 9 percent slopes	64.20	7.3%	IVe	IVe	42
LwB	Lakoma-Wewela complex, 2 to 6 percent slopes	61.20	6.9%	IIle	IIle	50
Wh	Whitelake fine sandy loam	54.74	6.2%	IVe		43
LcF	Labu-Sansarc silty clays, 9 to 35 percent slopes	51.59	5.8%	Vle		33
TrE	Tassel-Rock outcrop complex, 9 to 30 percent slopes	36.73	4.2%	Vle		5
HoB	Holt fine sandy loam, 3 to 6 percent slopes	35.08	4.0%	IIle	IIle	53
HoA	Holt fine sandy loam, 0 to 3 percent slopes	26.56	3.0%	IIle	IIle	59
RaA	Ree loam, 0 to 3 percent slopes	25.76	2.9%	IIc	Is	84
DaA	Dunday loamy fine sand, 0 to 3 percent slopes	18.36	2.1%	IVe	IIle	50
BID	Boro-Lakoma silty clays, 9 to 15 percent slopes	13.04	1.5%	Vle		39
Vt	Vetal fine sandy loam	12.51	1.4%	IIle		64
HoC	Holt fine sandy loam, 6 to 9 percent slopes	11.46	1.3%	IVe	IVe	45
MoB	Millboro silty clay, 3 to 6 percent slopes	10.16	1.2%	IIle	IIle	79
Cd	Cass fine sandy loam, channeled	4.71	0.5%	VIw		32
LaC	Labu clay, 6 to 9 percent slopes	3.71	0.4%	IVe	IVe	42
RIB	Reliance silty clay loam, 3 to 6 percent slopes	2.22	0.3%	IIe	IIe	89
VaC	Valentine loamy fine sand, 3 to 9 percent slopes	2.00	0.2%	Vle	IVe	18
Bb	Bon loam, 0 to 2 percent slopes, rarely flooded	1.00	0.1%	IIc		84
Weighted Average						39

Soils data provided by USDA and NRCS.