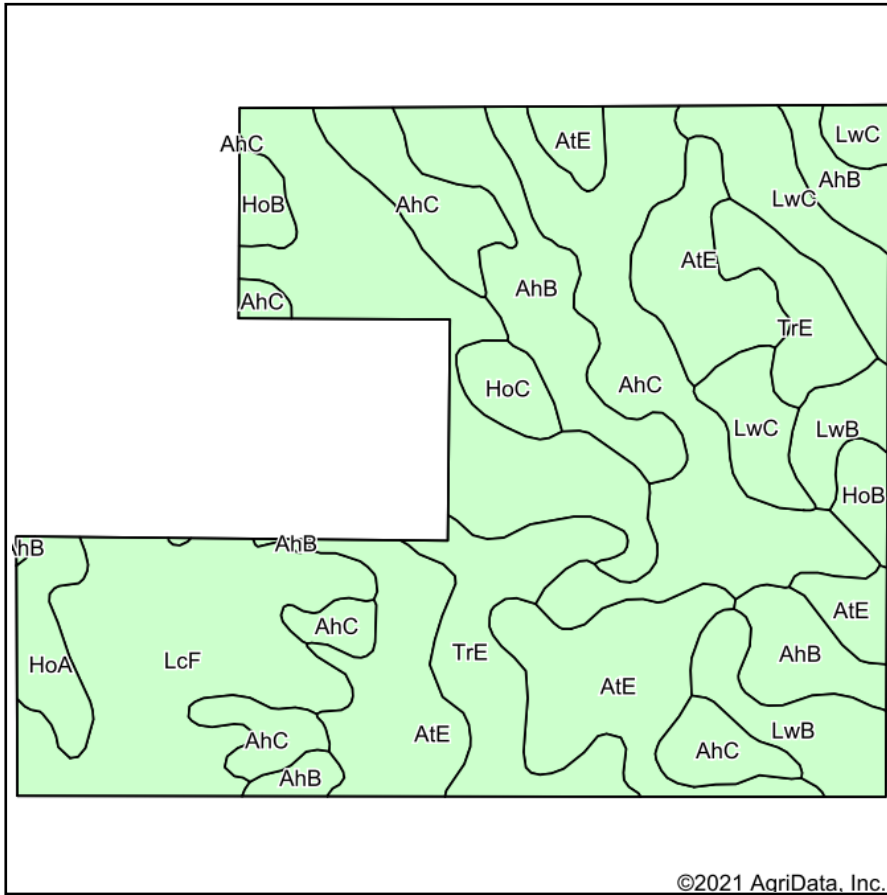
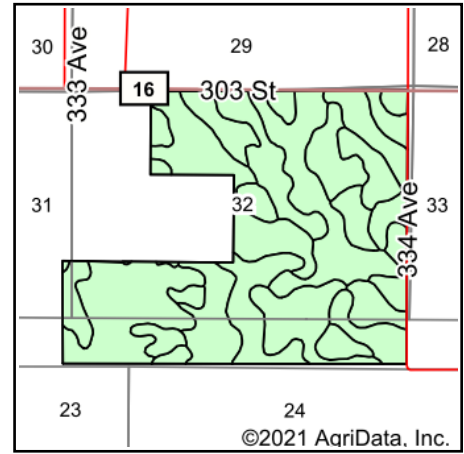


# Soils Map



Soils data provided by USDA and NRCS.



State: **South Dakota**  
 County: **Gregory**  
 Location: **32-95N-73W**  
 Township: **Carlock**  
 Acres: **387.02**  
 Date: **9/13/2021**

**ADVANTAGE**  
*Land Co.*

Maps Provided By:  
  
 CUSTOMIZED ONLINE MAPPING  
 © AgriData, Inc. 2021 www.AgriDataInc.com



Area Symbol: SD053, Soil Area Version: 22

Code	Soil Description	Acres	Percent of field	Non-Irr Class *c	Irr Class *c	Productivity Index
AtE	Anselmo-Tassel fine sandy loams, 6 to 25 percent slopes	113.61	29.4%	Vle		13
AhC	Anselmo-Holt fine sandy loams, 6 to 9 percent slopes	75.92	19.6%	IVe		42
LcF	Labu-Sansarc silty clays, 9 to 35 percent slopes	50.89	13.1%	Vle		33
AhB	Anselmo-Holt fine sandy loams, 2 to 6 percent slopes	41.80	10.8%	IIle		52
TrE	Tassel-Rock outcrop complex, 9 to 30 percent slopes	35.64	9.2%	Vle		5
LwC	Lakoma-Wewela complex, 6 to 9 percent slopes	26.18	6.8%	IVe		42
LwB	Lakoma-Wewela complex, 2 to 6 percent slopes	19.91	5.1%	IIle		50
HoA	Holt fine sandy loam, 0 to 3 percent slopes	9.19	2.4%	IIle	IIle	59
HoB	Holt fine sandy loam, 3 to 6 percent slopes	8.09	2.1%	IIle	IIle	53
HoC	Holt fine sandy loam, 6 to 9 percent slopes	5.79	1.5%	IVe	IVe	45
<b>Weighted Average</b>						<b>31.1</b>

\*c: Using Capabilities Class Dominant Condition Aggregation Method  
 Soils data provided by USDA and NRCS.