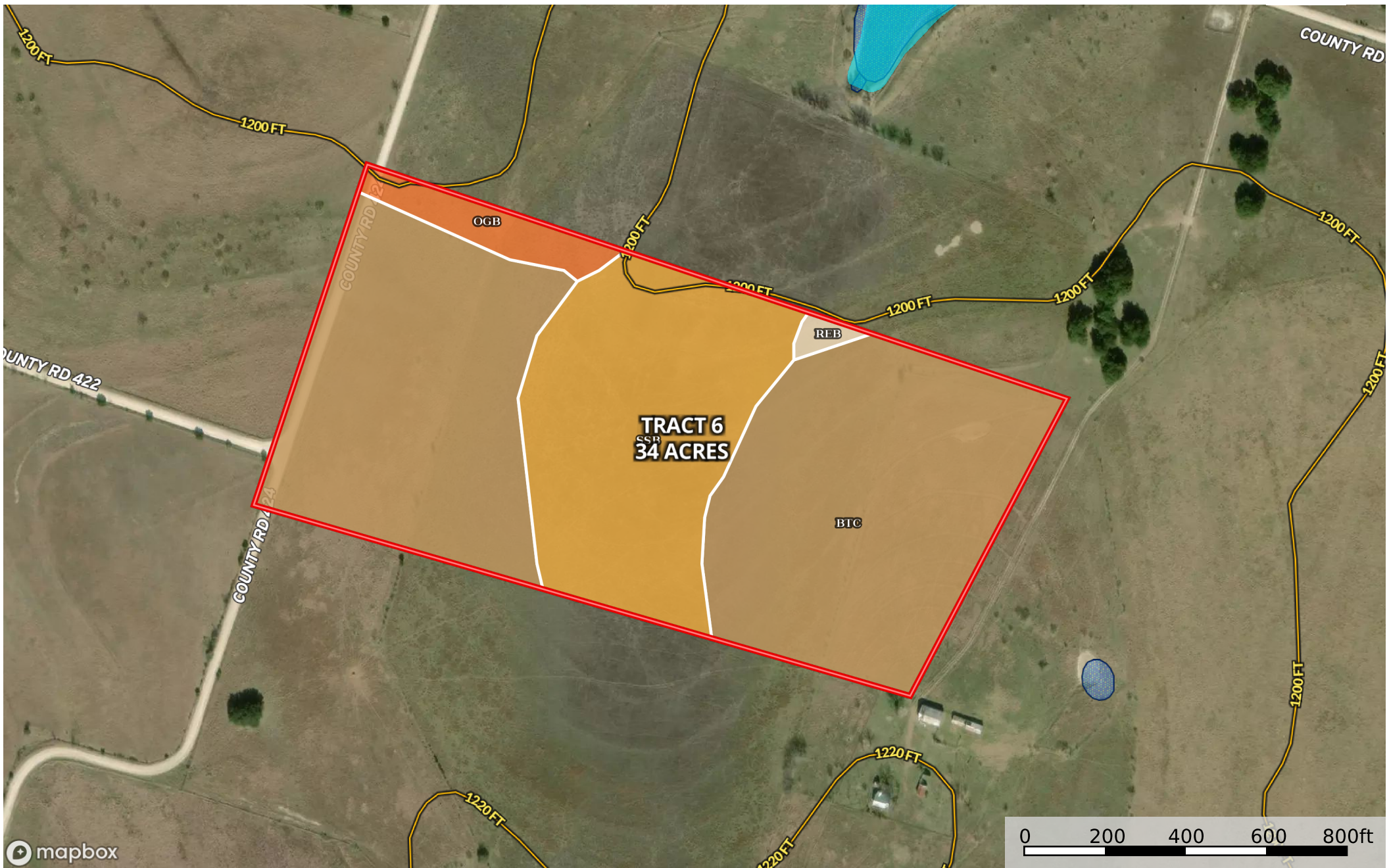


Seale - Tract 6 CR 425, 34 Acres
Hamilton County, Texas, 34 AC +/-



- Windmill
- Boundary
- Wetlands
- Riparian
- Stream, Intermittent
- River/Creek
- Water Body
- Crude Oil
- Natural Gas
- Other
- Water Wells



The information contained herein was obtained from sources deemed to be reliable. MapRight Services makes no warranties or guarantees as to the completeness or accuracy thereof.

Boundary 34.34 ac

SOIL CODE	SOIL DESCRIPTION	ACRES	%	NCCPI	CAP
BtC	Brackett gravelly clay loam, 1 to 5 percent slopes	22.77	66.3	-	4s
SsB	Slidell clay, 1 to 3 percent slopes	9.93	28.91	-	3e
OgB	Oglesby gravelly silty clay, 1 to 3 percent slopes	1.39	4.04	-	4s
ReB	Real gravelly clay loam, 1 to 3 percent slopes	0.26	0.75	-	6s
TOTALS		34.34(*)	100%	-	3.73

(*) Total acres may differ in the second decimal compared to the sum of each acreage soil. This is due to a round error because we only show the acres of each soil with two decimal.

Capability Legend

Increased Limitations and Hazards

Decreased Adaptability and Freedom of Choice Users

Land, Capability

	1	2	3	4	5	6	7	8
'Wild Life'	•	•	•	•	•	•	•	•
Forestry	•	•	•	•	•	•	•	
Limited	•	•	•	•	•	•	•	
Moderate	•	•	•	•	•	•		
Intense	•	•	•	•	•			
Limited	•	•	•	•				
Moderate	•	•	•					
Intense	•	•						
Very Intense	•							

Grazing Cultivation

(c) climatic limitations (e) susceptibility to erosion

(s) soil limitations within the rooting zone (w) excess of water