

NEW LISTING

See more information at [www.highlandranches.com](http://www.highlandranches.com)

# Whispering Pines Ranch

1,190 acres east of Spring City, Sanpete County, Utah



## EXECUTIVE SUMMARY:

**List Price: \$1,900,000**

**Mike Nelson | Dan Nelson**  
**801-482-7565 | [mike@hciutah.com](mailto:mike@hciutah.com)**

Notice: This information is believed to be accurate, but no warranty is expressed or implied. Highland Commercial insists that interested parties conduct their own research and investigations. The property is offered subject to prior sale, price change, and withdrawal without notice. No obligations will be created unless a purchase contract is signed by both buyer and seller. We welcome the cooperation of participating brokers; please contact us for our commission-sharing policies. All images and materials are copyright protected and are the property of

- 1,190 acres located near Spring City, Sanpete County, Utah
- Beautiful mountain ranch with pines, aspens, and streams
- Big game hunting for both elk and mule deer
- Acreage accessed through two private gates along Bob's Road
- Zoned SL (Sensitive Lands - 40-acre minimum lot size)
- 2020 Taxes: \$423.12
- Mineral rights excluded from offering
- Elevation range: 7,600 to 10,170 feet
- 13 miles northeast of Ephraim, Utah
- 25 miles southeast of Nephi, Utah
- 90 miles southeast of Salt Lake City, Utah

**HIGHLAND**  
**FARM & RANCH**

Highland Commercial, Inc.

2733 East Parley's Way, Suite 208

Salt Lake City, UT 84109

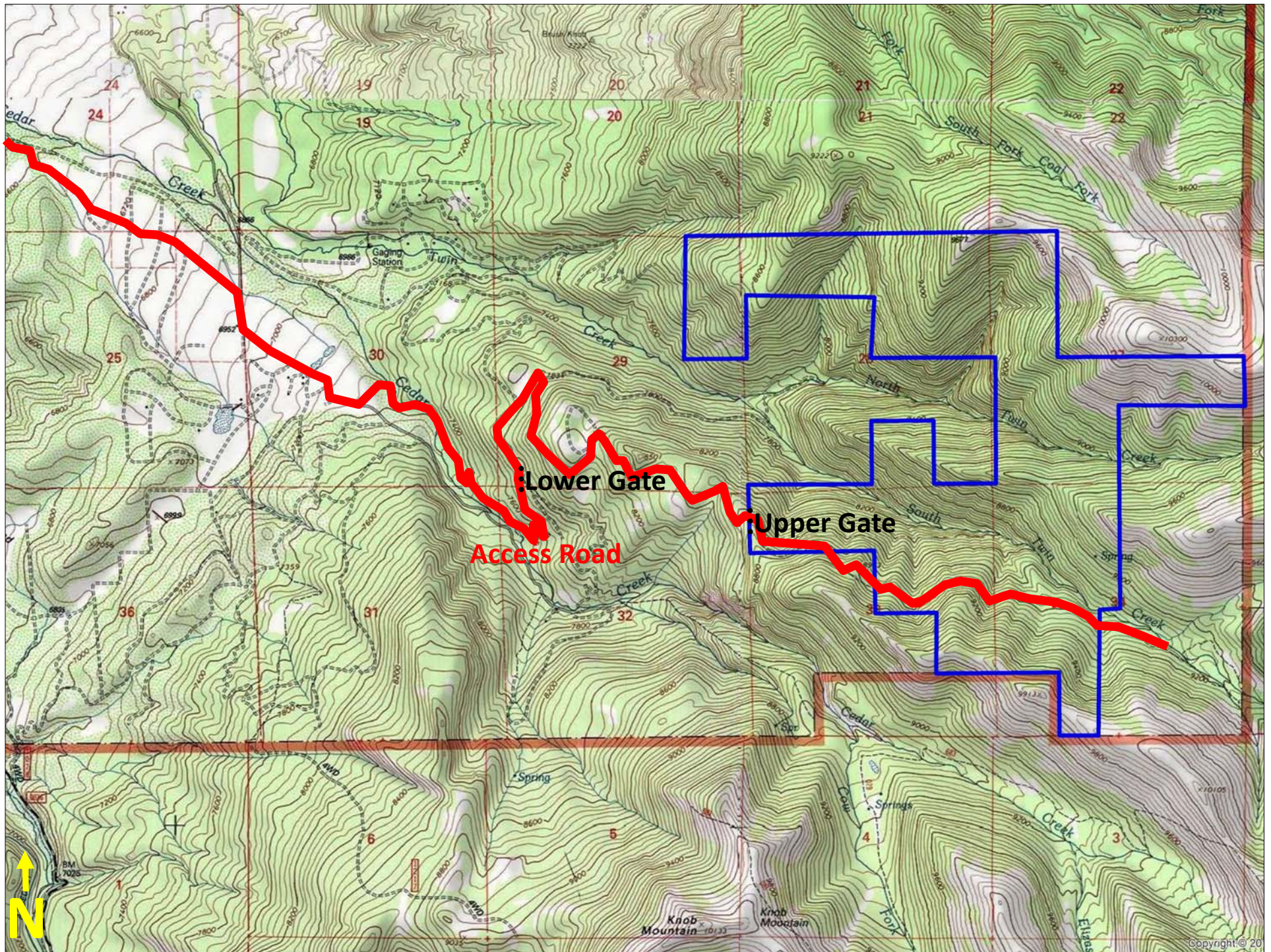
801-487-6100

[www.highlandranches.com](http://www.highlandranches.com)

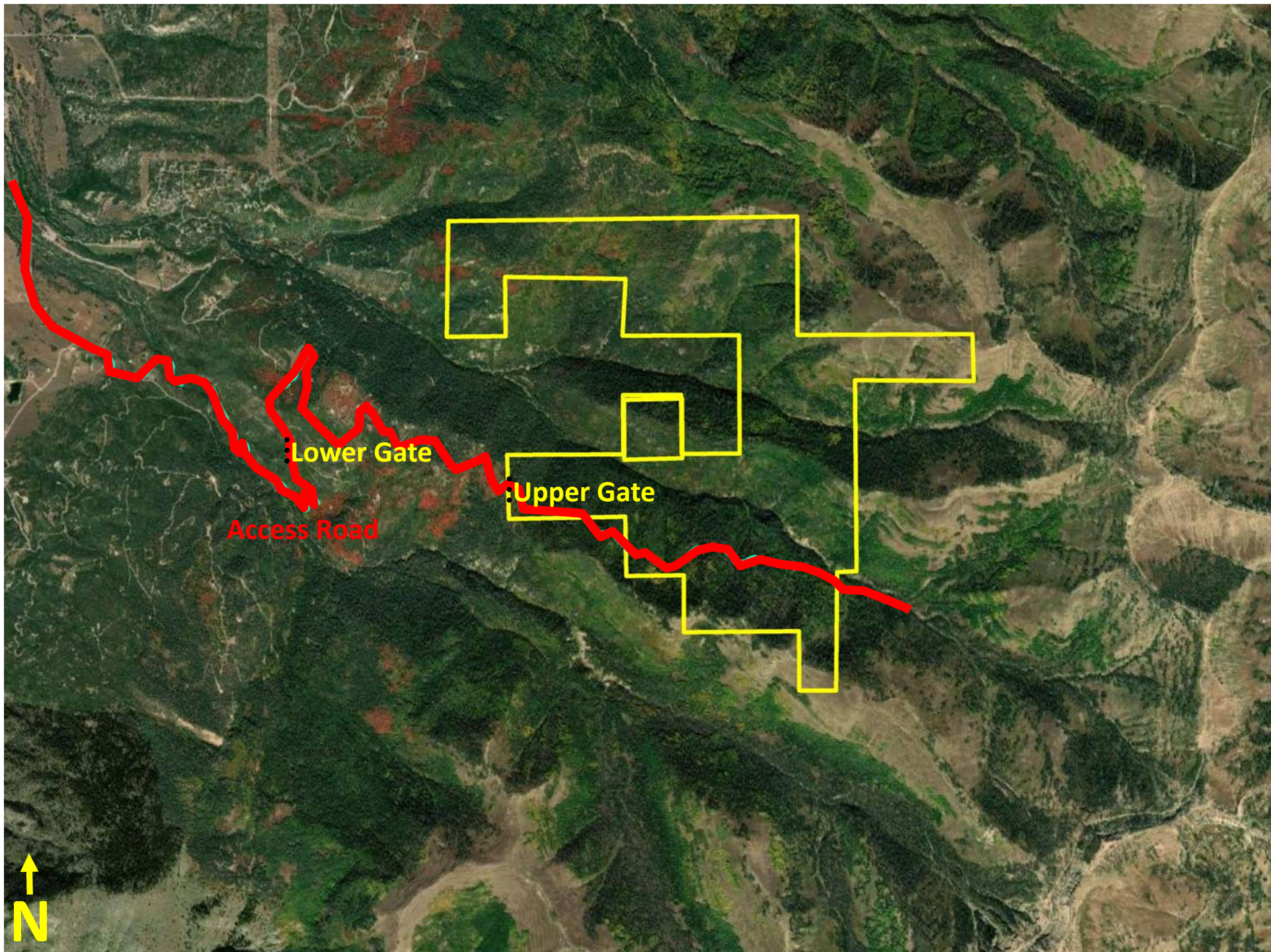












Lower Gate

Upper Gate

Access Road

N



