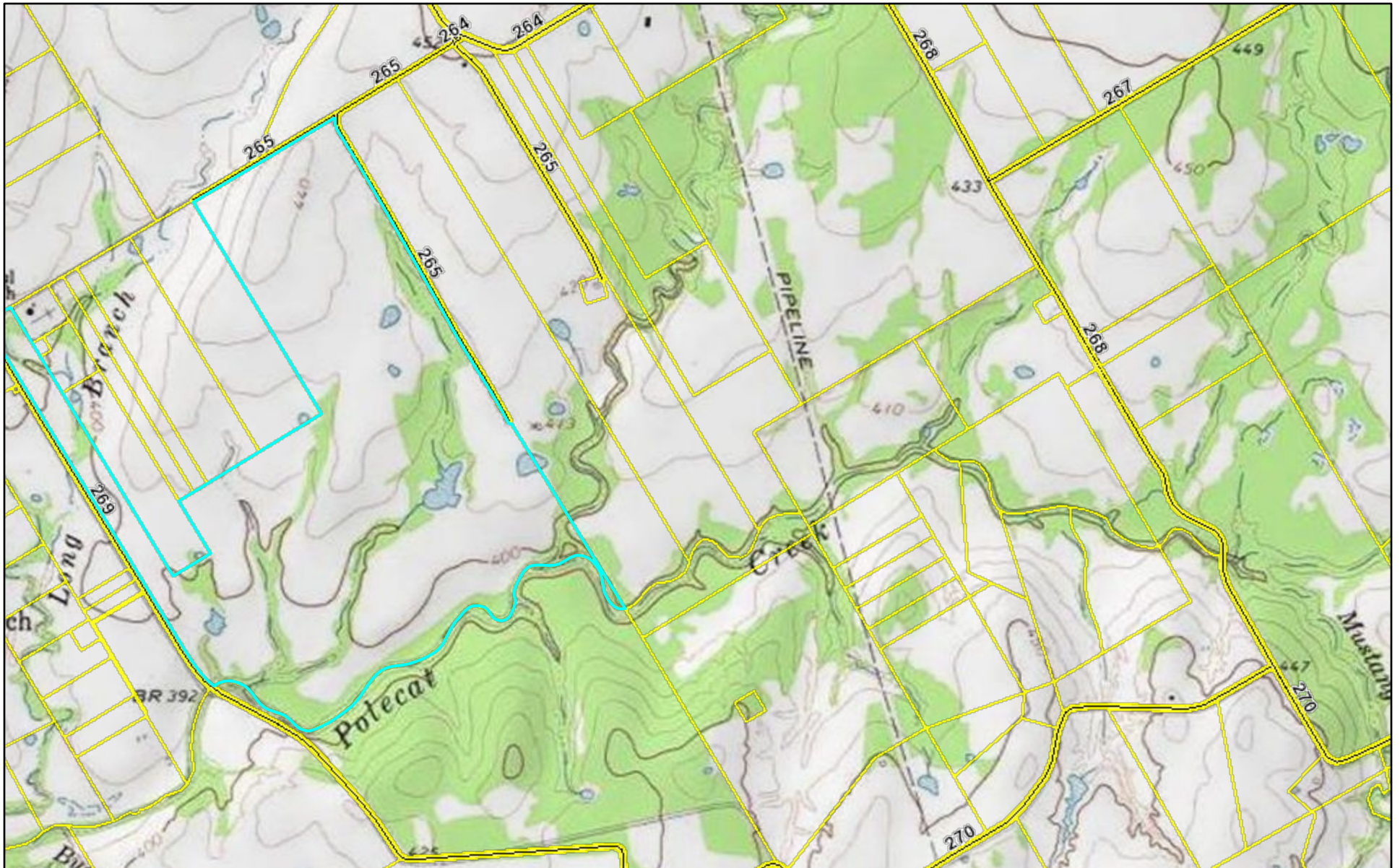


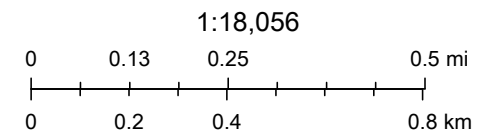


# Falls CAD Web Map



10/29/2021, 12:46:21 PM

-  Roads
-  Parcel Boundary



Copyright:© 2013 National Geographic Society, i-cubed

Falls County Appraisal District, Harris Govern -- [www.harrisgovern.com](http://www.harrisgovern.com)

This product is for informational purposes only and may not have been prepared for or be suitable for legal, engineering, or surveying purposes. It does not represent an on-the-ground survey and represents only the approximate relative location of property boundaries.