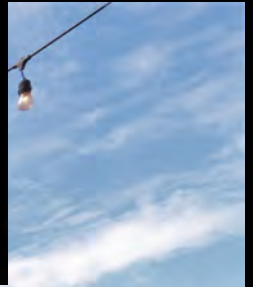
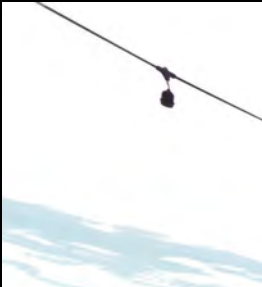




AlabamaLandAgent.com

Land • Farms • Lake Property

**Chad Camp
205-478-4974**



170+/- ACRES

4820 Co Rd 22 - Ashville, AL

Ashville, AL ~ GPS 33.756723, -86.284767

Shoal Creek Valley Farm, a Multi-Purpose farm for sale within 1 Hour of Birmingham Alabama. Approximately 171 Acres with a mixture of Lush Pasture Land and Timberland. This Gorgeous Farm was an Operating Wedding Venue with a 5,000 Sq. Ft. Entertainment Barn with Wood Board Walls & Floors and Wagon Wheel Chandeliers. Additional Barn joins the Main Barn, there you can find Men's & Women's Bathrooms, Kitchen and Open Equipment Storage on backside. In the distance you'll see 2 Bedroom 1 Bath Cabin with Large 10 x 22 Porch overlooking the Pasture and Pond. Around the corner and Hidden within the Pines, there you'll find a cozy 1000 Sq. Ft. Chalet with Bedroom & Bath with Kitchen and Den. You have riding trails, hunting fields, beaver ponds across shoal creek. You have 5,000 feet along shoal creek with you owning both sides of creek for most of it. It's Multi use can be from Wedding Venue, Bed & Breakfast, Dude Ranch, enjoying Horses to Cattle, small Quail Preserve to Hunting Deer, ducks and Turkey or just for private use and family enjoyment right in Shoal Creek Valley Alabama Land For Sale. You don't want to miss this opportunity.

**Chad Camp
(205) 478-4974**

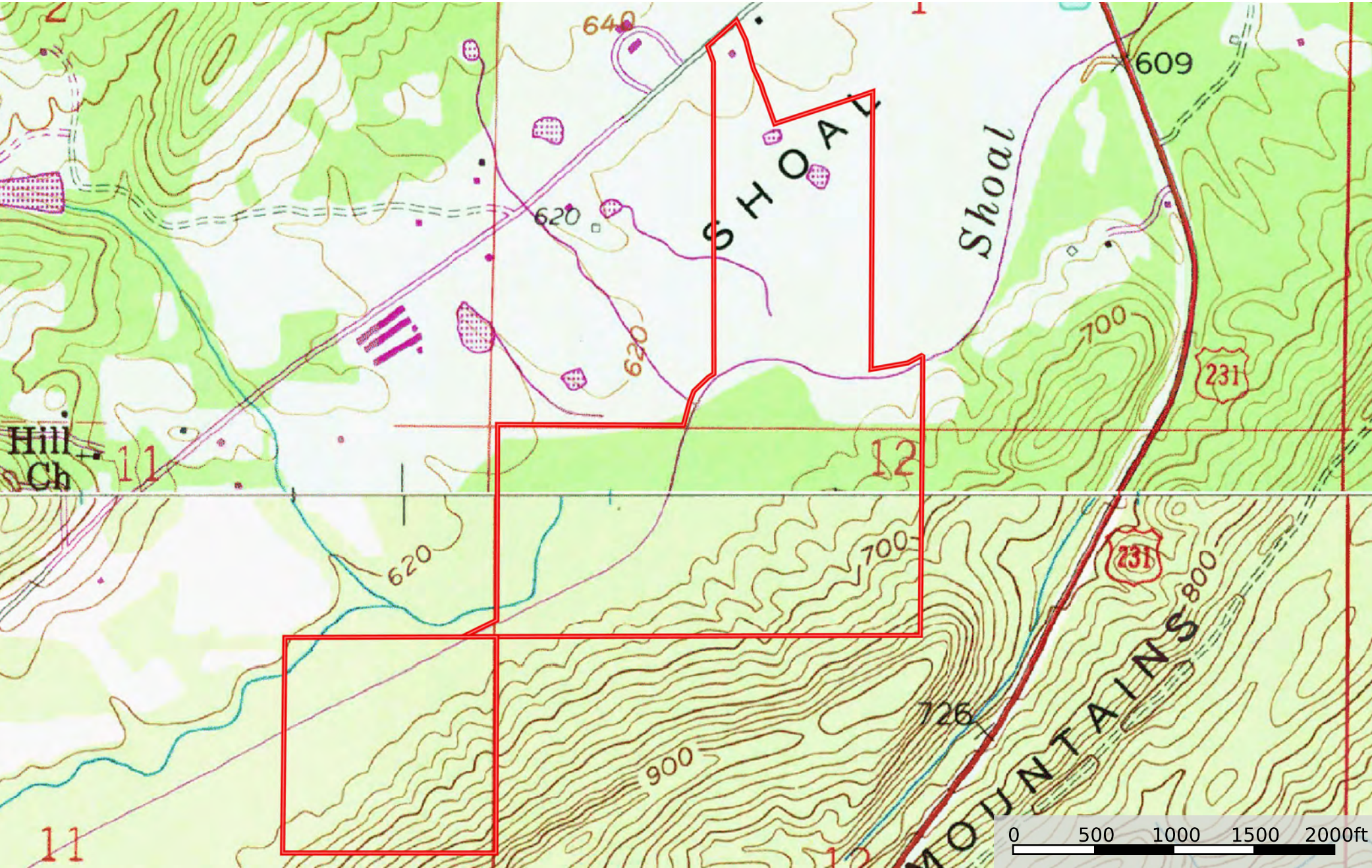


AlabamaLandAgent.com

Land • Farms • Lake Property



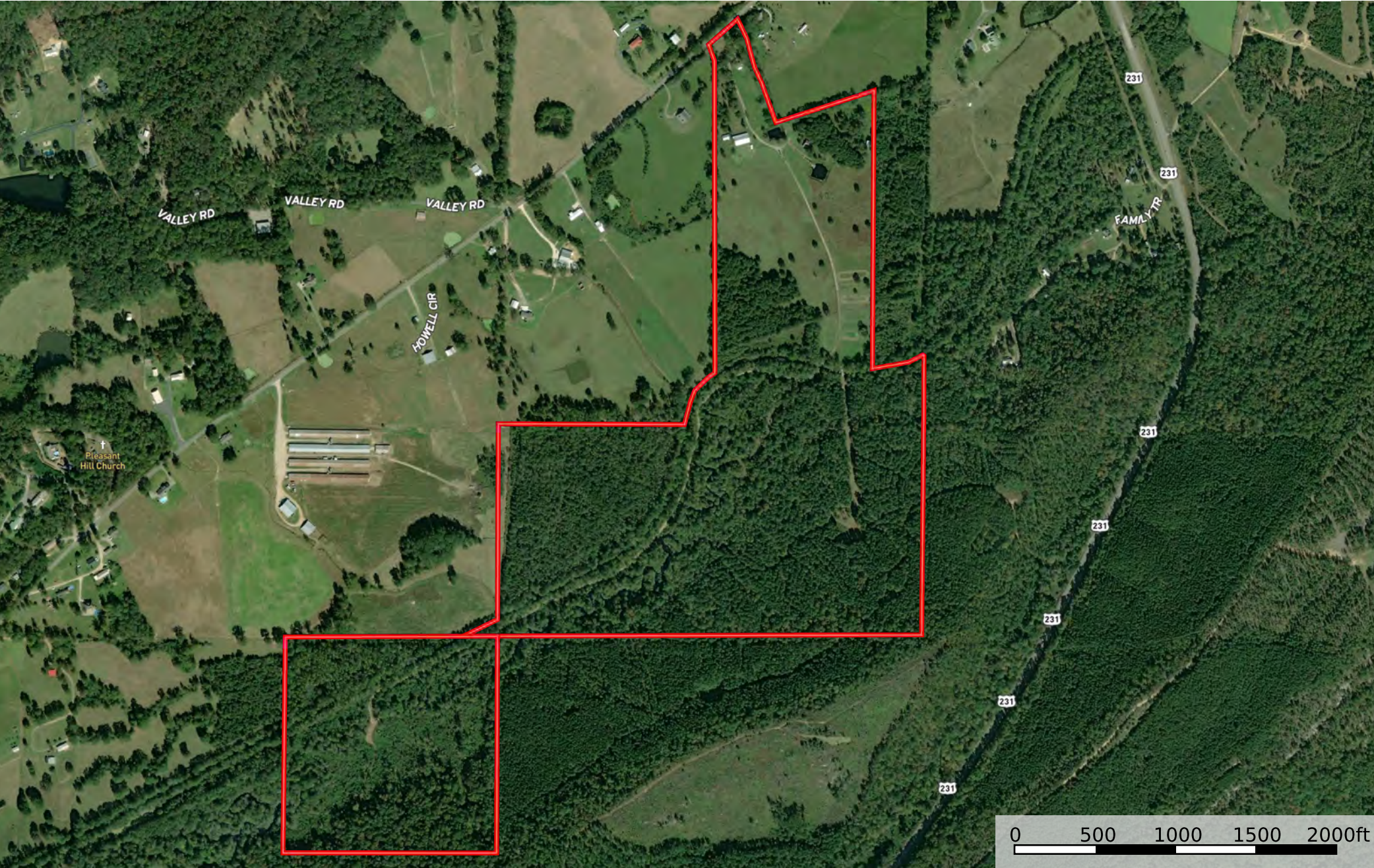
paul shoal creek
Alabama, AC +/-



Boundary

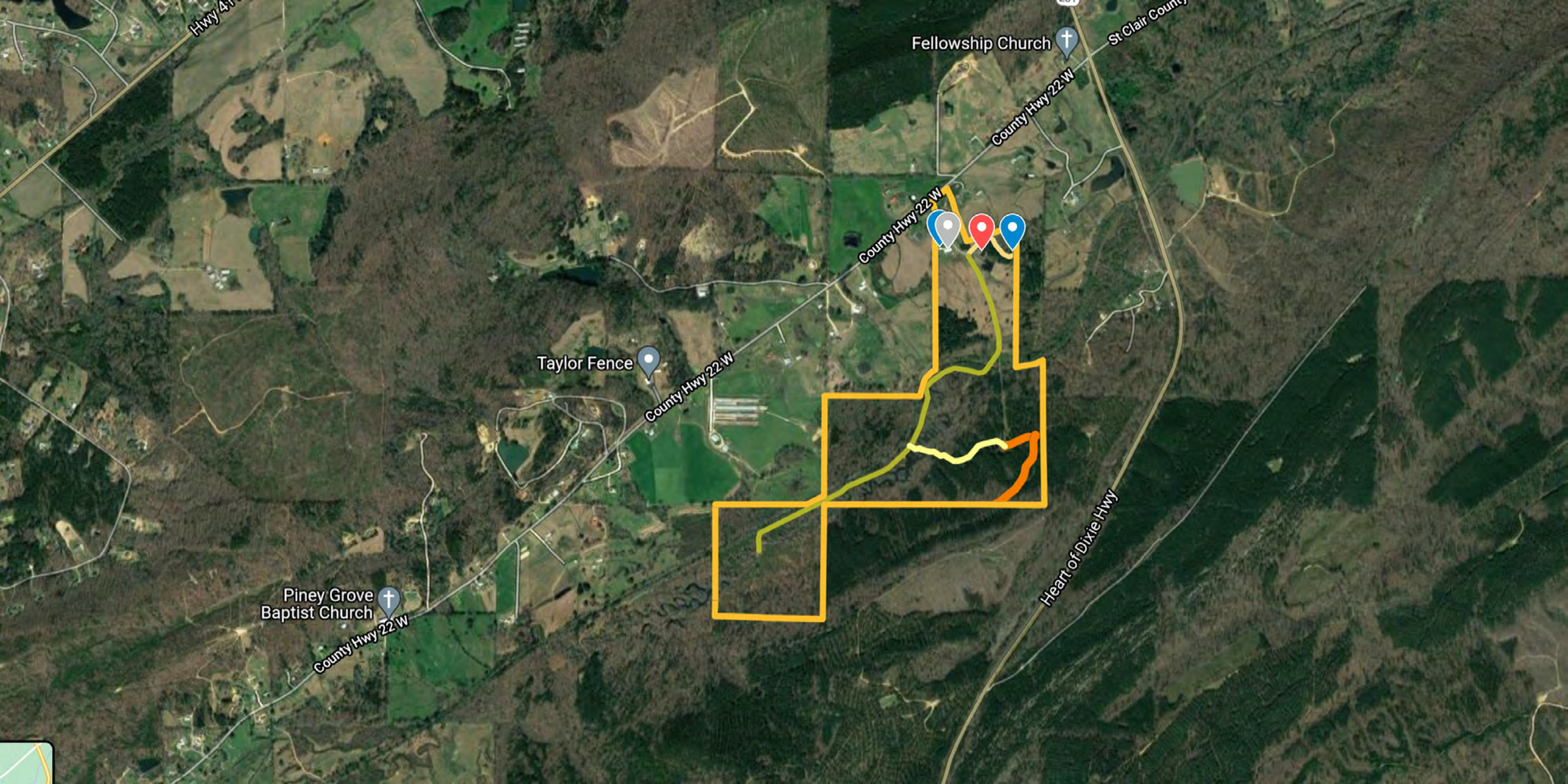
chad camp

paul shoal creek
Alabama, AC +/-



 Boundary

chad camp



Hwy 4

Fellowship Church

St. Clair County

County Hwy 22 W

County Hwy 22 W

Taylor Fence

County Hwy 22 W

Piney Grove Baptist Church

County Hwy 22 W

Heart of Dixie Hwy