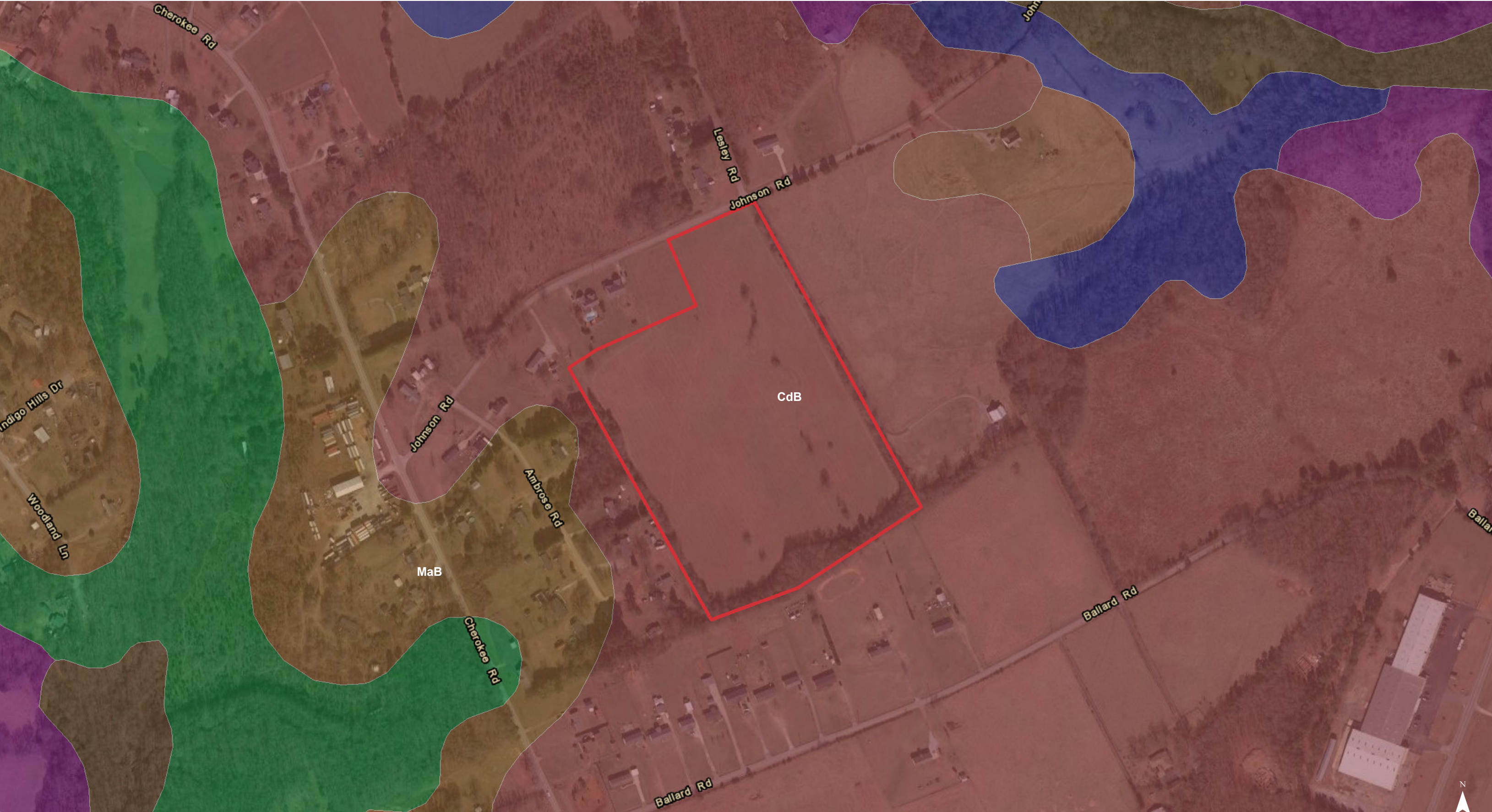






National Wetlands Inventory

- Estuarine and Marine Deepwater
- Estuarine and Marine Wetland
- Freshwater Emergent Wetland
- Freshwater Forested/Shrub Wetland
- Freshwater Pond
- Lake
- Riverine



Map Unit Description (Brief, Generated)

Anderson County, South Carolina

[Minor map unit components are excluded from this report]

Map unit: CdB - Cecil sandy loam, 2 to 6 percent slopes

Component: Cecil (95%)

The Cecil component makes up 95 percent of the map unit. Slopes are 2 to 6 percent. This component is on broad and narrow ridges and sideslopes adjacent to drainageways in the piedmont. The parent material consists of residuum weathered from granite, gneiss, or schist. Depth to a root restrictive layer is greater than 60 inches. The natural drainage class is well drained. Water movement in the most restrictive layer is moderately high. Available water to a depth of 60 inches is moderate. Shrink-swell potential is low. This soil is not flooded. It is not ponded. There is no zone of water saturation within a depth of 72 inches. Organic matter content in the surface horizon is about 1 percent. Nonirrigated land capability classification is 2e. This soil does not meet hydric criteria.

Map unit: MaB - Madison sandy loam, 2 to 6 percent slopes

Component: Madison (100%)

The Madison component makes up 100 percent of the map unit. Slopes are 2 to 6 percent. This component is on interfluvial areas on piedmonts. The parent material consists of clayey residuum weathered from granite and gneiss. Depth to a root restrictive layer is greater than 60 inches. The natural drainage class is well drained. Water movement in the most restrictive layer is moderately high. Available water to a depth of 60 inches is moderate. Shrink-swell potential is low. This soil is not flooded. It is not ponded. There is no zone of water saturation within a depth of 72 inches. Organic matter content in the surface horizon is about 1 percent. Nonirrigated land capability classification is 2e. This soil does not meet hydric criteria.