



Basin View Ranch Santa Fe, NM
Offered at \$17 Million

Sotheby's
INTERNATIONAL REALTY



Basin View Ranch - Santa Fe , New Mexico

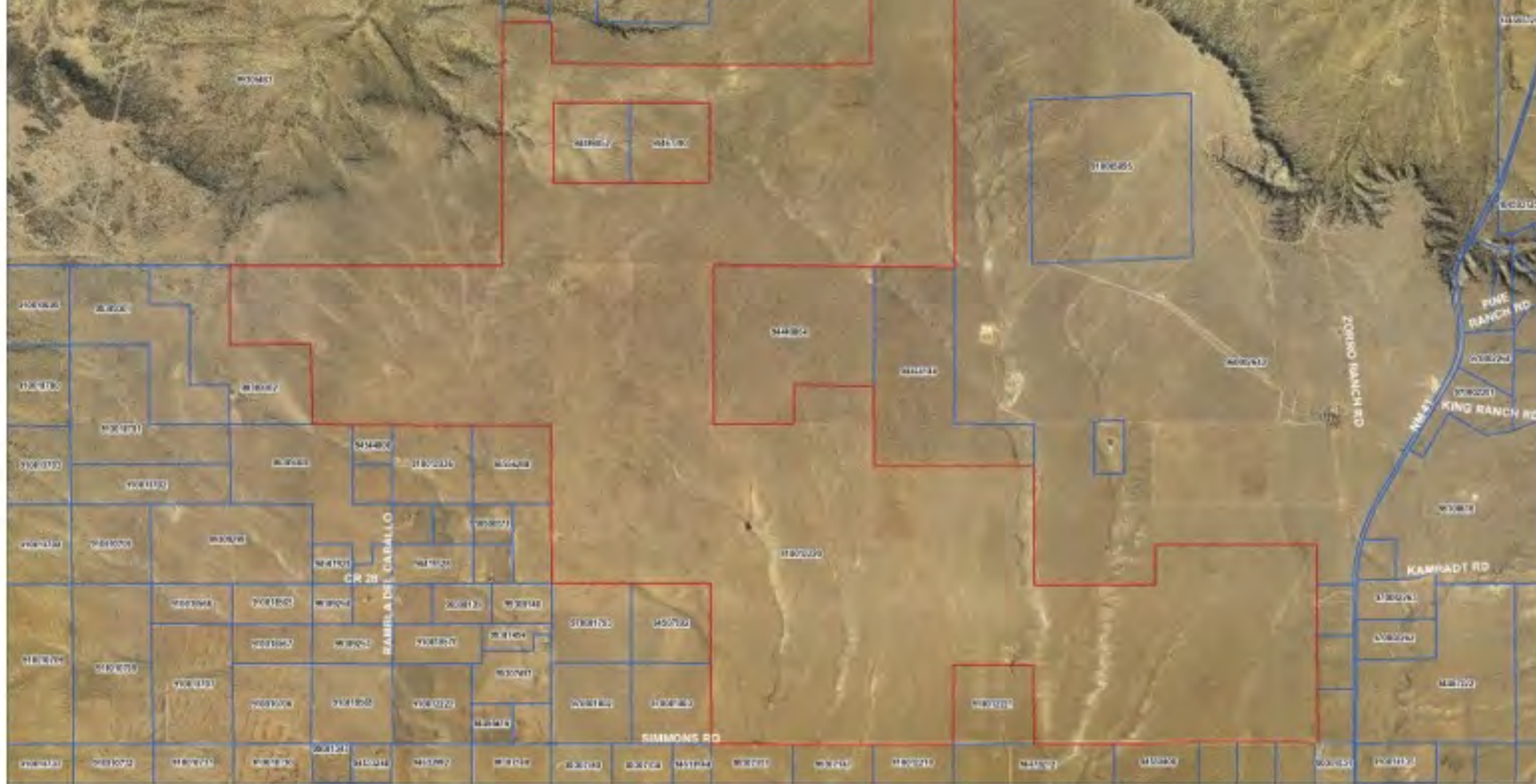
This beautiful Santa Fe ranch consists of 11,140 deeded acres with enchanting views, privacy, and the archeological splendor of Gallisteo and Estancia basins. Enjoy infinite night skies and marvelous wildlife while only 40 minutes to Santa Fe's cultural entertainment and exquisite cuisine. Easy access off highway 41 in Stanley, New Mexico.



11,140 deeded acres with five livestock wells, fenced perimeter, and six pastures for year-round cow/calf or equestrian operation. Build your home in the exclusive Stanley, New Mexico estate ranch community.

Elevation 6400. Current solar options by major utility convey.

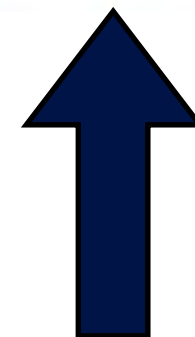




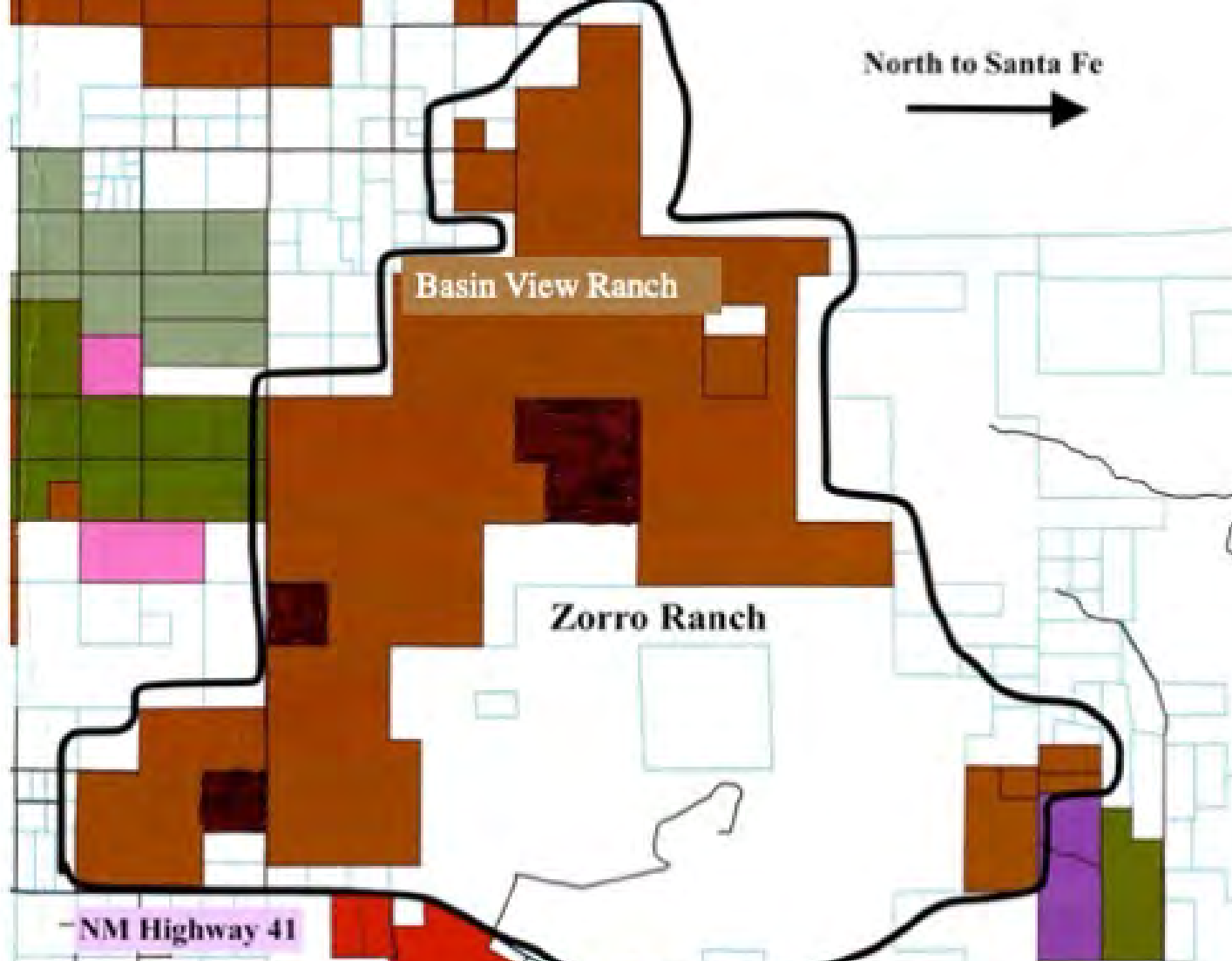
1000 010010000

Basin View Ranch Santa Fe County UPC #91001220

Property Outlined in Red



Highway 41 North to Santa Fe



Basin View Ranch shaded in Brown and Dark Brown
Highway 41
North to Santa Fe



Sophisticated... Wild West Style

Enchanting views, privacy and estate quality working cattle ranch overlooking the spiritual and archeological splendor of Gallisteo and Estancia basins. Enjoy Infinite night skies and marvelous wildlife while only 40 minutes to Santa Fe's cultural entertainment and exquisite cuisine. A perfect site for your home awaits you amongst the gramma grass and la choya cactus. Current solar options by major utility convey.

Basinviewranchnm.com

D'Nette Wood

Senior Associate Broker 505-463-2910

DNettewood.com

DNette.Wood@Sothebys.Realty

318 Grant Ave.
Santa Fe, NM 87501
505-982-6207



Sotheby's
INTERNATIONAL REALTY