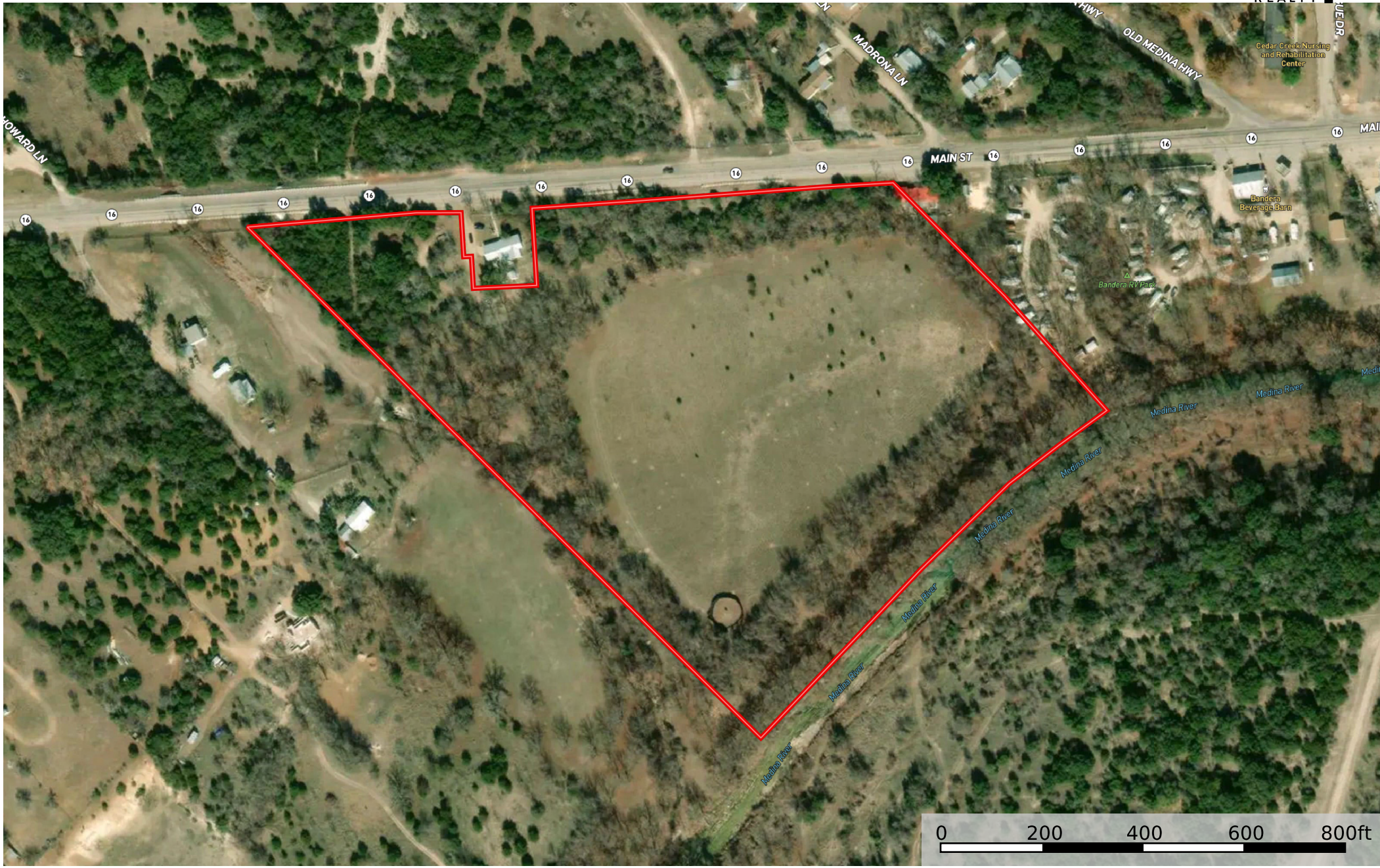


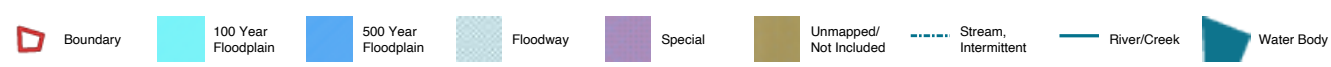
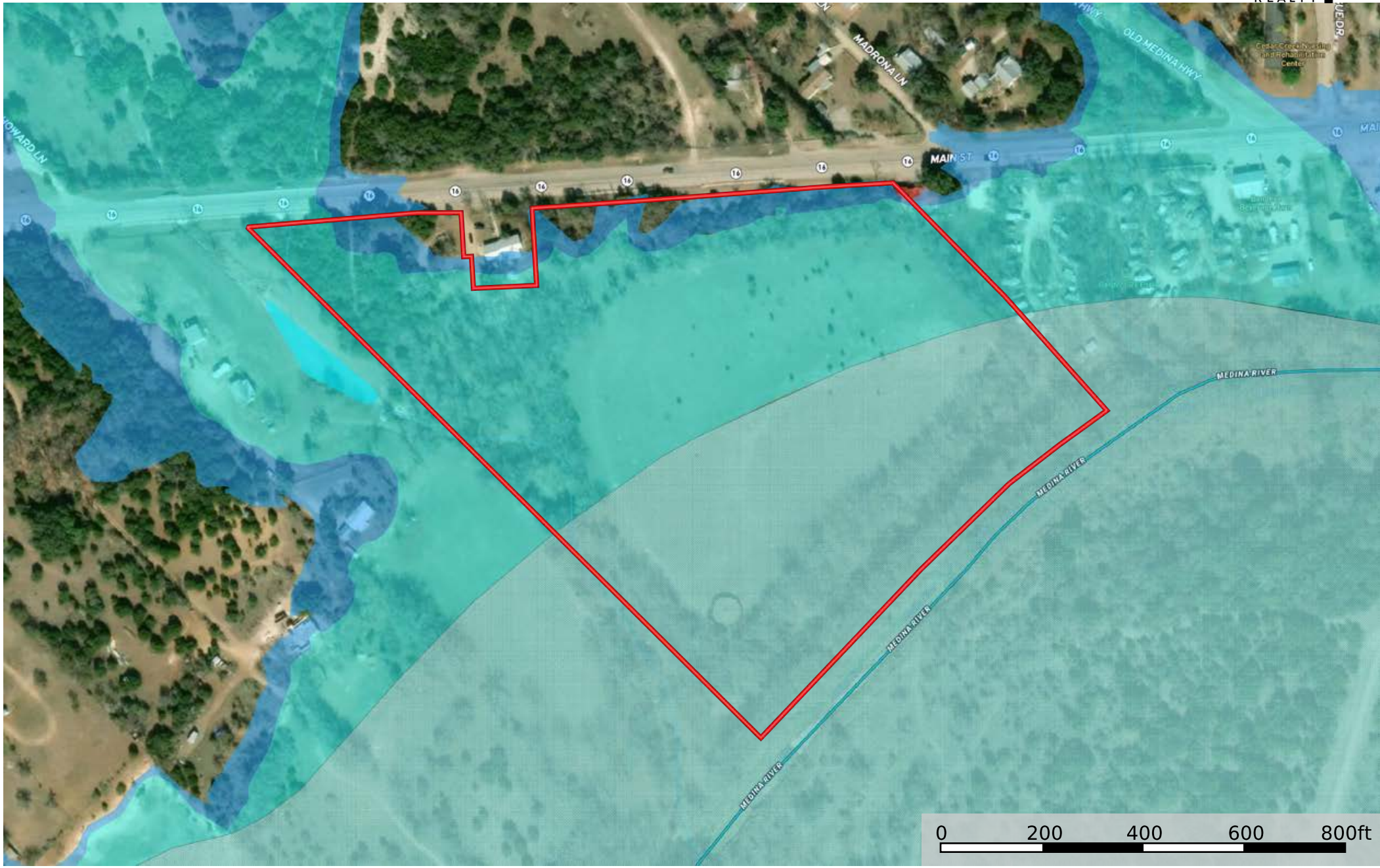
TBD State Highway 16 N
Bandera County, Texas, 21.295 AC +/-



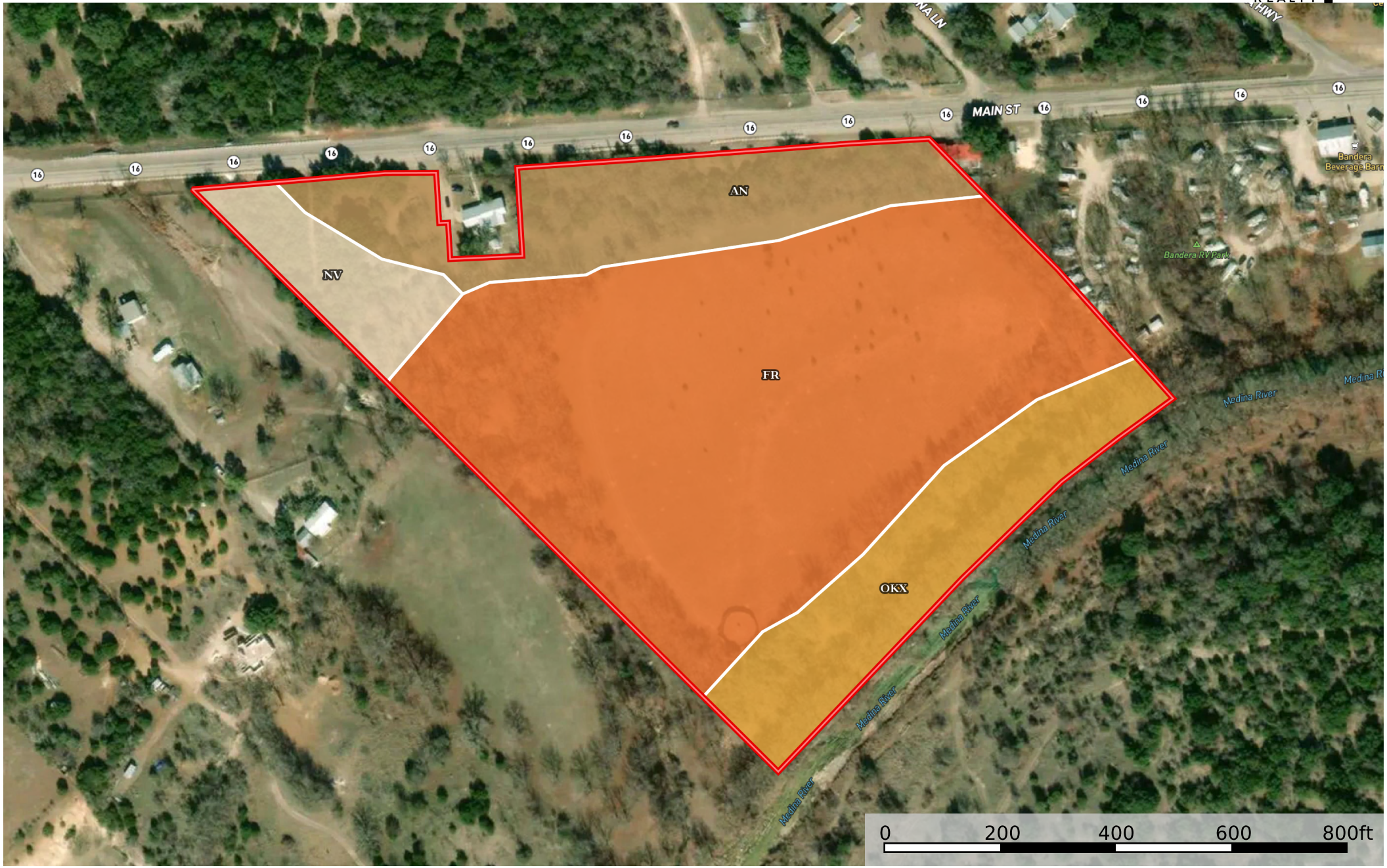
 Boundary

TBD State Highway 16 N

Bandera County, Texas, 21.295 AC +/-



TBD State Highway 16 N
Bandera County, Texas, 21.295 AC +/-



 Boundary

I Boundary 21.62 ac

SOIL CODE	SOIL DESCRIPTION	ACRES	%	CPI	NCCPI	CAP
FR	Oakalla silty clay loam, 0 to 2 percent slopes, occasionally flooded	13.33	61.66	0	58	3e
AN	Anhalt clay, 0 to 2 percent slopes	3.59	16.6	0	30	3s
OKX	Orif-Boerne association, 0 to 5 percent slopes, frequently flooded	3.33	15.4	0	27	5w
NV	Nuvalde silty clay, moist, 1 to 3 percent slopes	1.37	6.34	0	54	2e
TOTALS		21.62(*)	100%	-	48.32	3.24









(*) Total acres may differ in the second decimal compared to the sum of each acreage soil. This is due to a round error because we only show the acres of each soil with two decimal.

Capability Legend

Increased Limitations and Hazards

Decreased Adaptability and Freedom of Choice Users

Land, Capability

								
	1	2	3	4	5	6	7	8
'Wild Life'	•	•	•	•	•	•	•	•
Forestry	•	•	•	•	•	•	•	
Limited	•	•	•	•	•	•	•	
Moderate	•	•	•	•	•	•		
Intense	•	•	•	•	•			
Limited	•	•	•	•				
Moderate	•	•	•					
Intense	•	•						
Very Intense	•							

Grazing Cultivation

(c) climatic limitations (e) susceptibility to erosion

(s) soil limitations within the rooting zone (w) excess of water