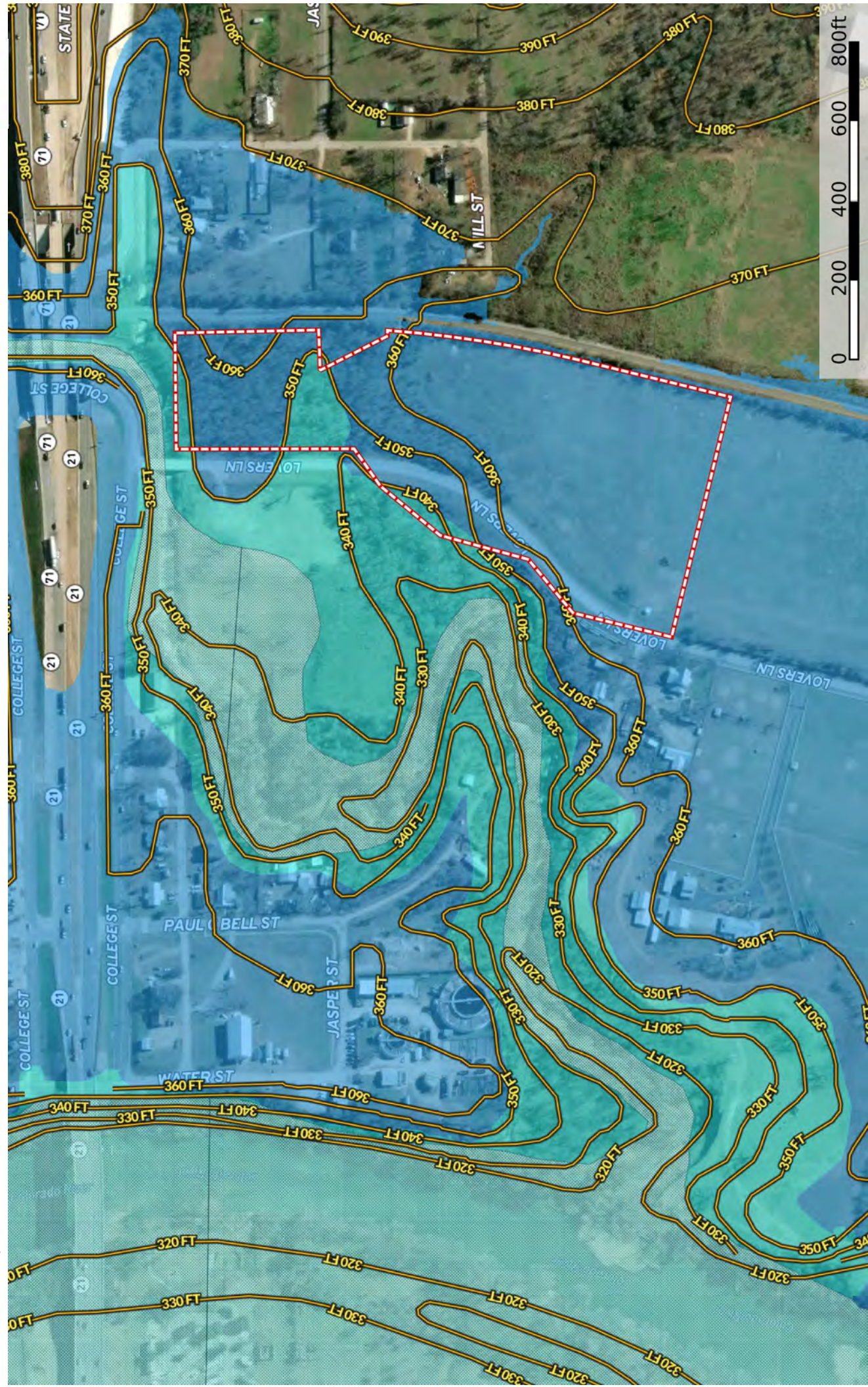


13.68 Acres Lover's Lane
Bastrop County, Texas, AC +/-







- Boundary
- 100 Year Floodplain
- 500 Year Floodplain
- Floodway
- Special
- Unmapped/ Not Included



13.68 Acres Lover's Lane
Bastrop County, Texas, AC +/-



Boundary 13.7 ac

SOIL CODE	SOIL DESCRIPTION	ACRES	%	CPI	NCCPI	CAP
Sm	Smithville fine sandy loam, 0 to 1 percent slopes	7.37	53.83	0	54	1
Tw	Tinn clay, 0 to 1 percent slopes, frequently flooded	3.0	21.91	0	46	5w
SeD2	Shep clay loam, 3 to 8 percent slopes, eroded	2.56	18.7	0	44	6e
Sa	Sayers fine sandy loam, 0 to 1 percent slopes, occasionally flooded	0.77	5.62	0	29	4s
TOTALS		13.69(*)	100%	-	49.01	2.98

(*) Total acres may differ in the second decimal compared to the sum of each acreage soil. This is due to a round error because we only show the acres of each soil with two decimal.

Capability Legend

Increased Limitations and Hazards

Decreased Adaptability and Freedom of Choice Users

Land, Capability

	1	2	3	4	5	6	7	8
'Wild Life'	•	•	•	•	•	•	•	•
Forestry	•	•	•	•	•	•	•	
Limited	•	•	•	•	•	•	•	
Moderate	•	•	•	•	•	•		
Intense	•	•	•	•	•			
Limited	•	•	•	•				
Moderate	•	•	•					
Intense	•	•						
Very Intense	•							

Grazing Cultivation

(c) climatic limitations (e) susceptibility to erosion

(s) soil limitations within the rooting zone (w) excess of water