



FARM & RANCH

CHARMING FARMHOUSE ON 14.25 GORGEOUS ACRES

807 Jordan Rd. – Poolville, TX



Williamstrew[☆]
A DIVISION OF EBBY HALLIDAY REAL ESTATE, INC.

LISTED BY **STEPHEN REICH GROUP** OF WILLIAMS TREW REAL ESTATE

PROPERTY SUMMARY

DESCRIPTION

Charming Farmhouse on 14.25 gorgeous acres! This completely remodeled 3-bedroom 2 bath home has been taken down to the studs and totally redone with all of the latest styles. From all new windows to all new appliances, nothing was left untouched. The open concept features a large stone fireplace, granite countertops and stainless-steel appliances. Master bath features granite countertops, glass shower and a large soaking tub! The 14.25 acres is very rare in the fact that it has no deed restrictions! Large mature hardwoods provide a magnificent setting, and the ability to create the property of your dreams!

LOCATION

CITY Poolville
County Parker
Schools Poolville ISD

OFFER SUMMARY

List Price \$624,900
Lot Size 14.25 acres
Utilities Septic, Well

Driving Directions From Poolville, go west on Lone Star Road for approx 4.7 miles. Turn Right onto Leech Road for approx 1.3 miles, and then Left on Jordan Road. Property will be on your right in less than 1 mile.

HIGHLIGHTS

- 14.25 ACRES
- 2,008 SF
- 3 BEDROOMS • 2 BATHS
- COMPLETELY REMODELED
- NOTHING LEFT UNTOUCHED
- NO DEED RESTRICTIONS

LISTING PRESENTED BY:



STEPHEN REICH
817-597-8884
stephen.reich@williamstrew.com

PARKER COUNTY OFFICE
400 Shops Boulevard, Ste. 200
Willow Park, TX 76087

FARM & RANCH • RESIDENTIAL • COMMERCIAL-DEVELOPMENT • LAND

PROPERTY PHOTOS



STEPHEN REICH – 817.597.8884



WilliamsTrew 
A DIVISION OF EBBY HALLIDAY REAL ESTATE, INC.

PROPERTY PHOTOS

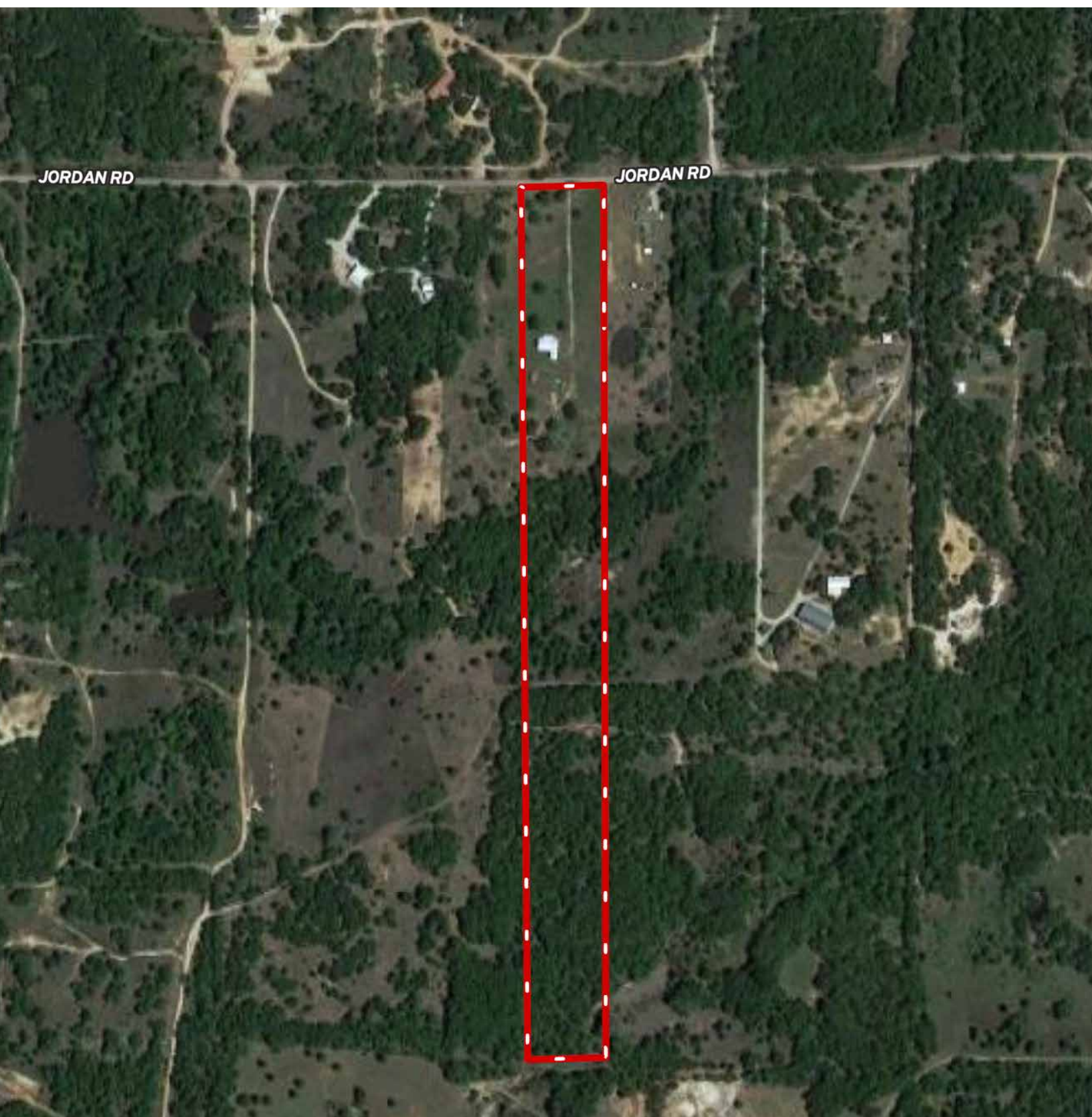


STEPHEN REICH - 817.597.8884



WilliamsTrew
A DIVISION OF EBBY HALLIDAY REAL ESTATE, INC.

AERIAL MAP



CONTOUR LINES & FLOODPLAIN

