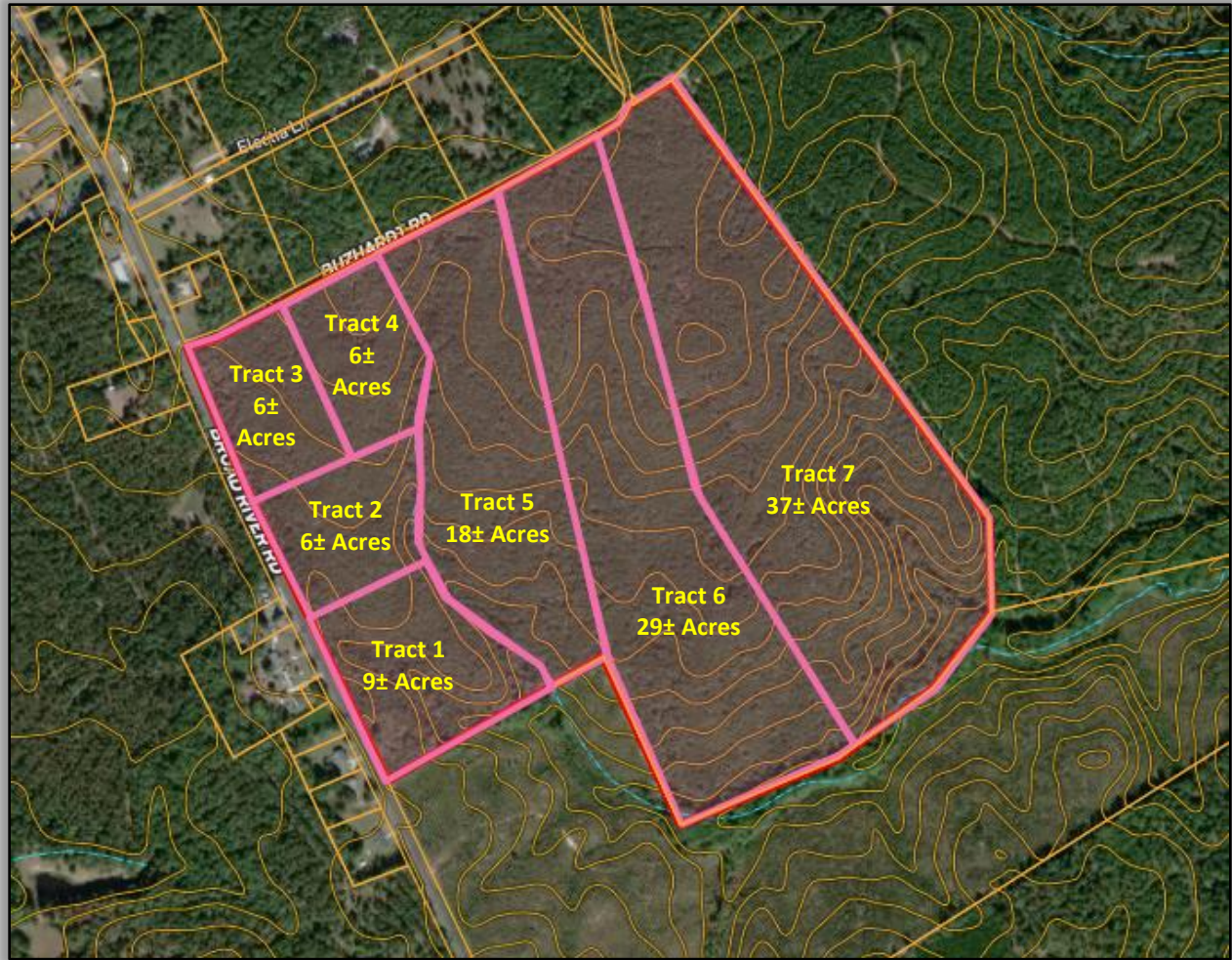




BROWN & Co.
LAND BROKERS



PRELIMINARY SUBDIVISION

FINAL SALES PRICE OF EACH TRACT SHALL BE CALCULATED ON A GROSS PRICE PER ACRE BASIS DETERMINED BY A NEW SURVEY PERFORMED BY A REGISTERED SURVEY AT THE BUYERS EXPENSE.

| TRACT | ESTIMATED ACRES | PRICE PER ACRE | TOTAL LIST PRICE |
|---------|-----------------|----------------|------------------|
| TRACT 1 | 9± | \$8,250 | \$74,250 |
| TRACT 2 | 6± | \$9,995 | \$59,970 |
| TRACT 3 | 6± | \$9,995 | \$59,970 |
| TRACT 4 | 6± | \$9,995 | \$59,970 |
| TRACT 5 | 18± | \$7,000 | \$126,000 |
| TRACT 6 | 29± | \$6,500 | \$188,500 |
| TRACT 7 | 37± | \$5,995 | \$221,815 |

Contact Owner/Broker Russ Brown (803) 718-0911