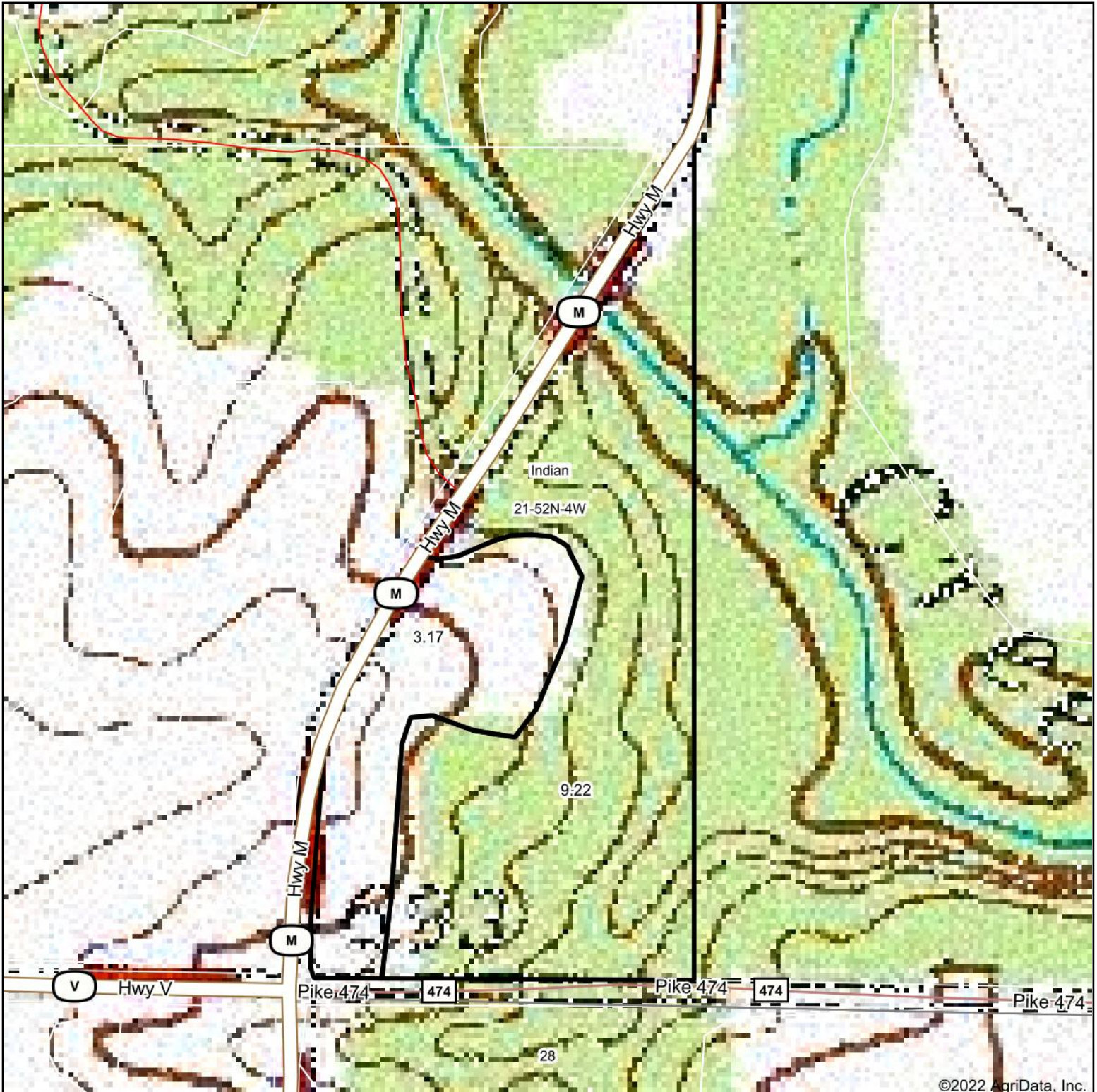


Topography Map



TA Tom Anderson
• REAL ESTATE •

Maps Provided By:



© AgriData, Inc. 2021

www.AgriDataInc.com

map center: 39° 15' 36.54, -91° 21' 9.92

21-52N-4W
Pike County
Missouri

0ft 252ft 504ft



3/17/2022

Field borders provided by Farm Service Agency as of 5/21/2008.