



**For Sale:
129.12 Acres**

**Swaney Road
Allen County**



***A Super Parcel of
Agricultural Land
for the
Farmer or Investor!
111 Acres Tillable***

Located: From Bluffton, OH take North Dixie Highway (South Main) to left on Phillips Road to right on Lincoln to right on Swaney.

Blount & Pewamo Soils

Approximately 6 acres of woods is being cleared for additional tillable land.

**Fronting with access on Swaney Road
Lots of I-75 frontage.**

Billboard income of \$2,400 per year.

www.wilnat.com



WILSON NATIONAL LLC
A REAL ESTATE & AUCTION GROUP

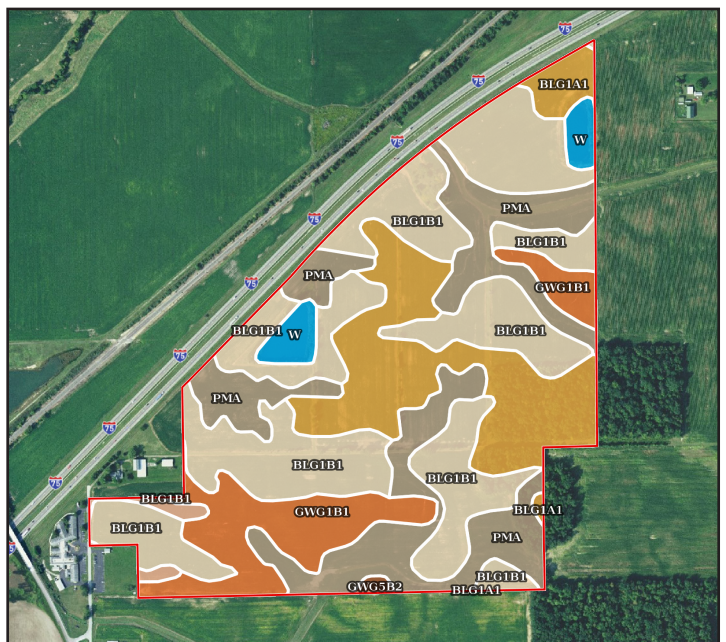
CALL MARK WILSON OR BRANDON WILSON

800-450-3440

[illegible][illegible][illegible]

An aerial photograph of a rural area with various land parcels outlined in green. A red line traces a boundary across the map, starting from the bottom left, moving east, then north, following a road and a creek, and ending in the top right. The parcels are labeled with their acreage. A major road, Interstate 75 (I-75), runs diagonally from the bottom left to the top right. Other smaller roads and a creek are also visible. The parcels are labeled with their acreage: 3.26 AC, 2.81 AC, 56.31 AC, 0.7 AC, 6.73 AC, 10.07 AC, 0.9 AC, 16.84 AC, 2.14 AC, 10.9 AC, 0.57 AC, 27.9 AC, 12.86 AC, 17.08 AC, 15.62 AC, 2.6 AC, 2.58 AC, 11.11 AC, 10.08 AC, 0.64 AC, 7.04 AC, 6.63 AC, 3.13 AC, 1.75 AC, 20.97 AC, 1.27 AC, 0.71 AC, 2.01 AC, and 2.31 AC. The red boundary line encloses several of these parcels, including the 10.08 AC, 10.9 AC, 2.14 AC, 12.86 AC, 17.08 AC, 15.62 AC, 2.6 AC, 2.58 AC, 11.11 AC, 10.08 AC, 0.64 AC, 7.04 AC, 6.63 AC, 3.13 AC, 1.75 AC, 20.97 AC, 1.27 AC, 0.71 AC, 2.01 AC, and 2.31 AC parcels.

An aerial photograph of a rural area with various land parcels outlined in green. A red line traces a boundary across the map, starting from the bottom left, moving east, then north, following a road and a creek, and ending in the top right. The parcels are labeled with their acreage. A major road, Interstate 75 (I-75), runs diagonally from the bottom left to the top right. Other smaller roads and a creek are also visible. The parcels are labeled with their acreage: 3.26 AC, 2.81 AC, 56.31 AC, 0.7 AC, 6.73 AC, 10.07 AC, 0.9 AC, 16.84 AC, 2.14 AC, 10.9 AC, 0.57 AC, 27.9 AC, 12.86 AC, 17.08 AC, 15.62 AC, 2.6 AC, 2.58 AC, 11.11 AC, 10.08 AC, 0.64 AC, 7.04 AC, 6.63 AC, 3.13 AC, 1.75 AC, 20.97 AC, 1.27 AC, 0.71 AC, 2.01 AC, and 2.31 AC. The red boundary line encloses several of these parcels, including the 10.08 AC, 10.9 AC, 2.14 AC, 12.86 AC, 17.08 AC, 15.62 AC, 2.6 AC, 2.58 AC, 11.11 AC, 0.64 AC, 7.04 AC, 6.63 AC, 3.13 AC, 1.75 AC, 20.97 AC, 1.27 AC, 0.71 AC, 2.01 AC, and 2.31 AC parcels.



WILSON NATIONAL LLC
A REAL ESTATE & AUCTION GROUP



WILSON NATIONAL LLC
A REAL ESTATE & AUCTION GROUP