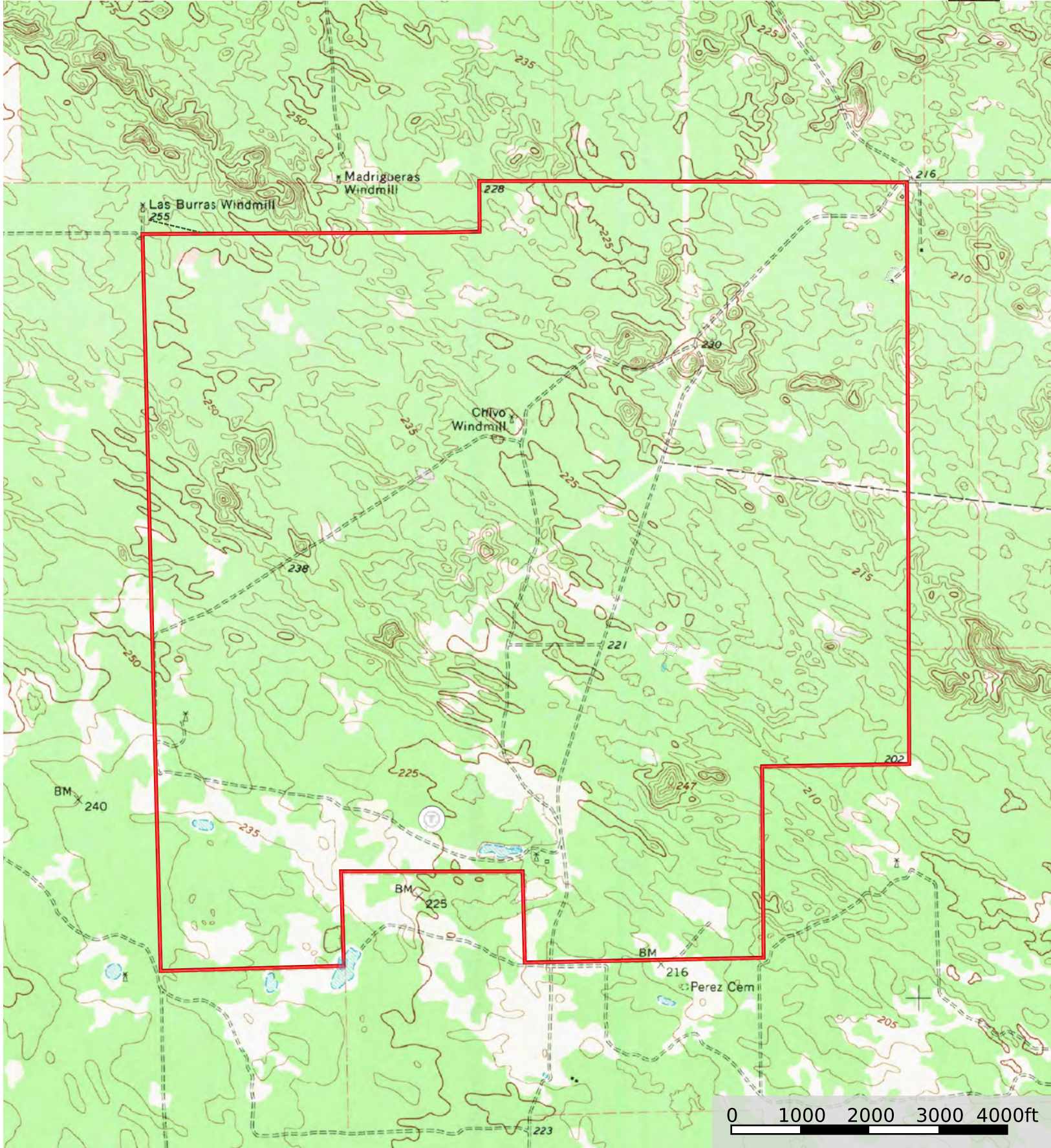
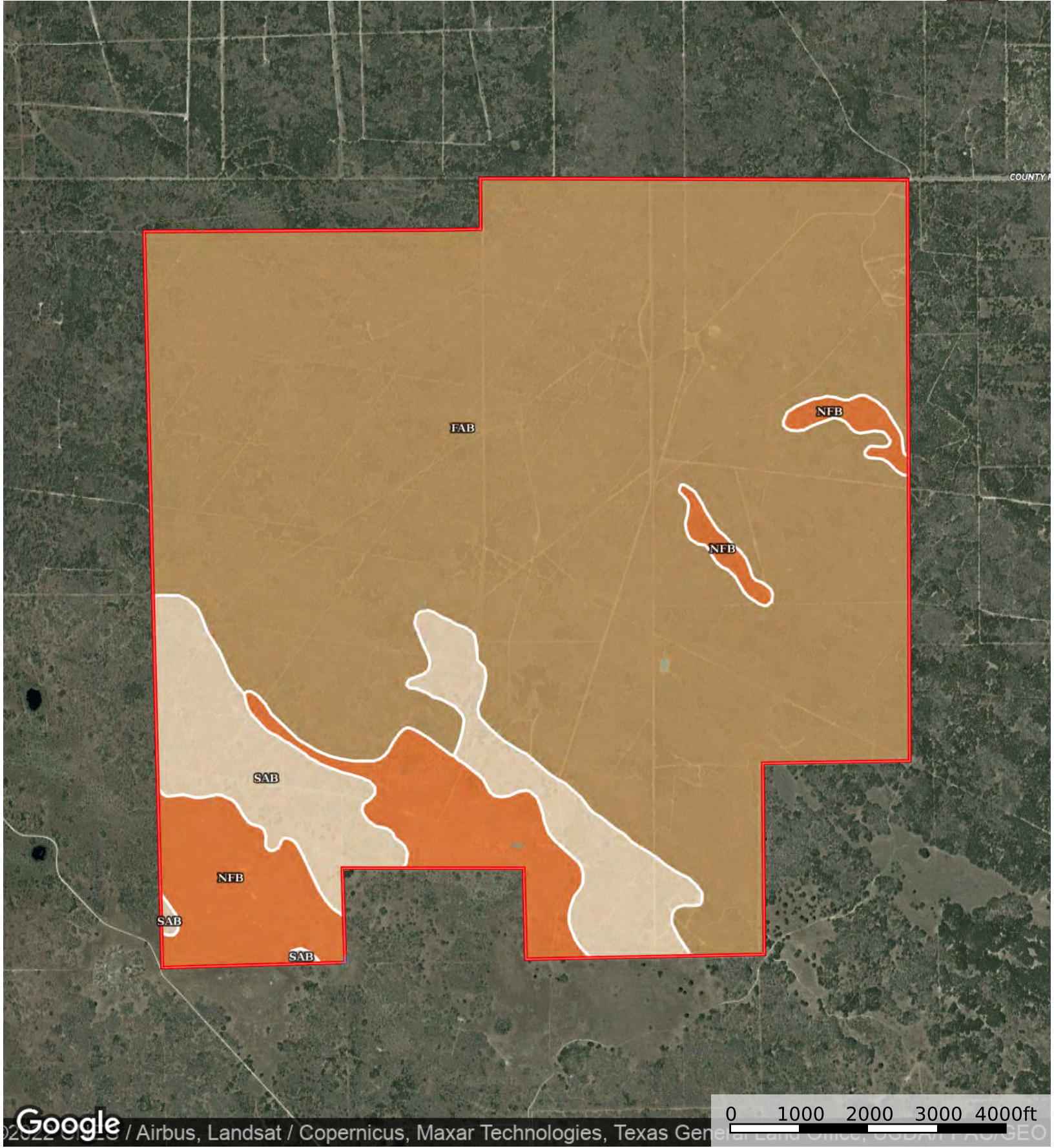


- | | | | | | | | | | | | | | | | | | | | | | | | |
|--|--------|--|-------------|--|----------|--|--------------|--|---------------|--|------|--|------------|--|-------|--|------|--|------|--|------|--|-------|
| | Trough | | Windmill | | Gate | | Shed / Shack | | Water Storage | | Barn | | Main House | | House | | Pier | | Pens | | Well | | Fence |
| | BHL | | Pond / Tank | | Boundary | | | | | | | | | | | | | | | | | | |



Trough Fence BHL Pond / Tank Boundary



BHL Pond / Tank Boundary

|  Boundary 2551.88 ac

SOIL CODE	SOIL DESCRIPTION	ACRES	%	CPI	NCCPI	CAP
FAB	Falfurrias fine sand, 0 to 5 percent slopes	2022.91	79.27	0	15	7e
SAB	Sarita fine sand, 0 to 5 percent slopes	266.05	10.43	0	20	4e
NFB	Nueces fine sand, 0 to 3 percent slopes	262.92	10.3	0	26	3e
TOTALS		2551.89(*)	100%	-	16.65	6.28









(*) Total acres may differ in the second decimal compared to the sum of each acreage soil. This is due to a round error because we only show the acres of each soil with two decimal.

Capability Legend

Increased Limitations and Hazards

Decreased Adaptability and Freedom of Choice Users

Land, Capability

								
	1	2	3	4	5	6	7	8
'Wild Life'	•	•	•	•	•	•	•	•
Forestry	•	•	•	•	•	•	•	
Limited	•	•	•	•	•	•	•	
Moderate	•	•	•	•	•	•		
Intense	•	•	•	•	•			
Limited	•	•	•	•				
Moderate	•	•	•					
Intense	•	•						
Very Intense	•							

Grazing Cultivation

(c) climatic limitations (e) susceptibility to erosion

(s) soil limitations within the rooting zone (w) excess of water