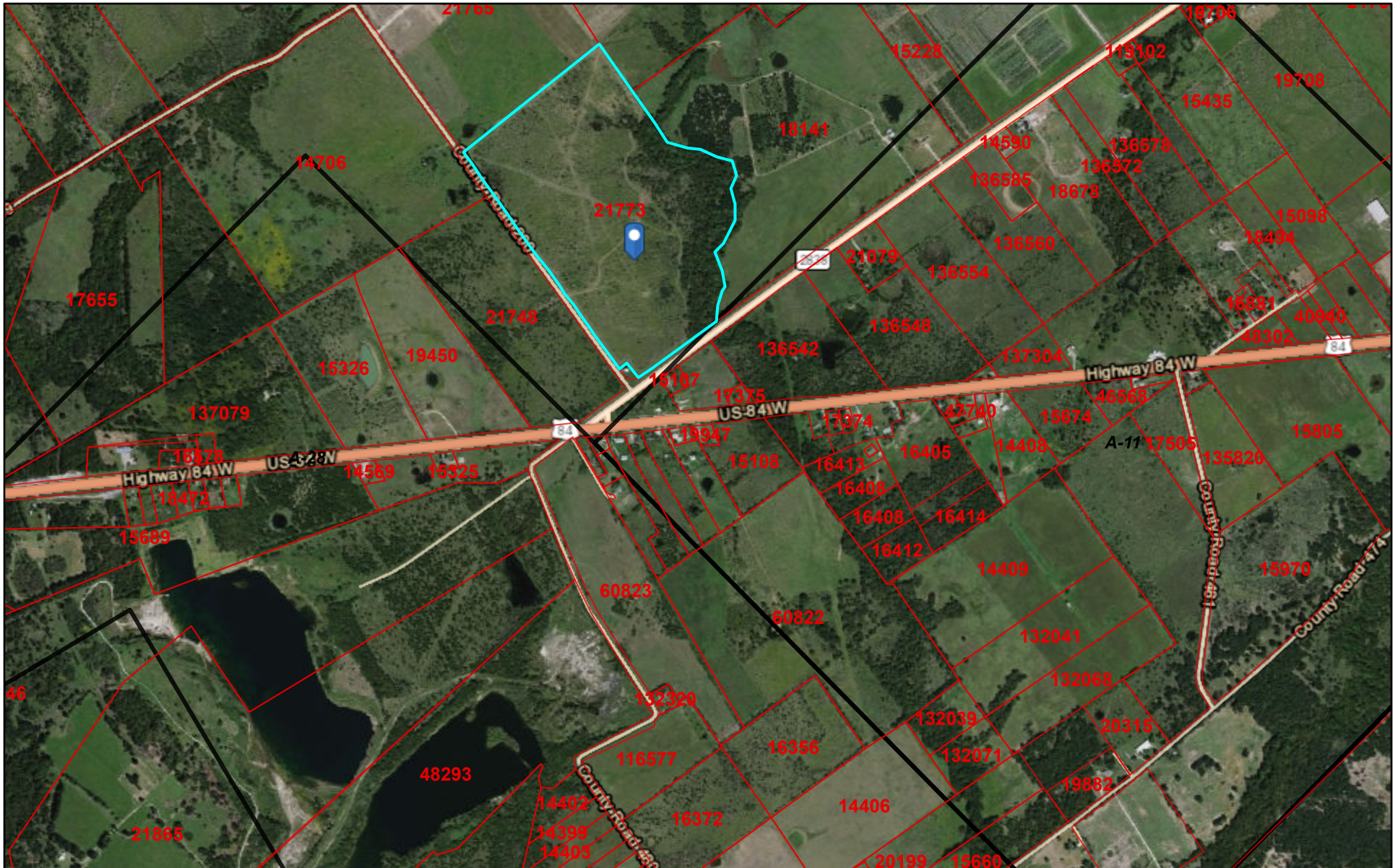




# Limestone CAD Web Map



4/23/2022, 8:28:59 PM

World Transportation  Abstracts  
 Parcels

1:18,056  
0 0.13 0.25 0.5 mi  
0 0.2 0.4 0.8 km

© OpenStreetMap (and) contributors, CC-BY-SA, Esri, HERE, Garmin, (c) OpenStreetMap contributors

Limestone County Appraisal District, BIS Consulting - [www.bisconsulting.com](http://www.bisconsulting.com)

Disclaimer: This product is for informational purposes only and has not been prepared for or be suitable for legal, engineering, or surveying purposes. It does not represent an on-the-ground survey and represents only the approximate relative location of boundaries.