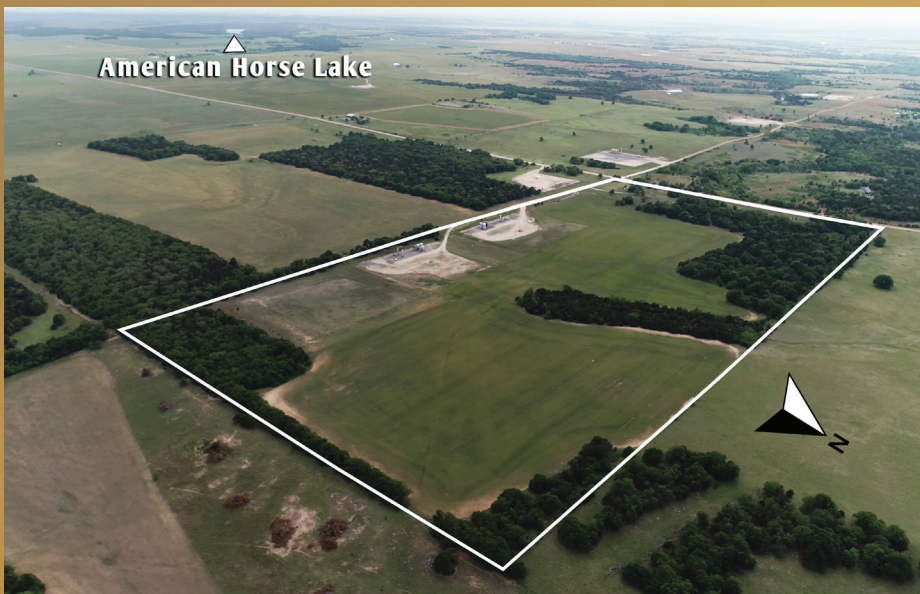


# 80± Acres Land Auction

Farmland • Timber • Grassland  
Geary, OK

Thursday, June 16<sup>th</sup> - 10:00 A.M.

*Seller: CM Seyler*



- Interior & Exterior Fences
- Wooded Area
- Potential Home Sites
- Wildlife Habitat

FSA Information:  
41.79 Acres of Cropland

Auction Held Onsite



Legal Description: South Half (S/2) of Southwest Quarter (SW/4) of Section Fifteen (Sec. 15), Township Fourteen North (T14N), Range Twelve West (R12W), Indian Meridian, Blaine County, Oklahoma. Surface Rights Only.



2022

Roger Entz  
Auctioneer/Broker 75020

## ENTZ Auction & Realty, Inc

[www.entzauction.com](http://www.entzauction.com) • 405.663.2200

Sales Associates: Allen Entz • Doug Eichelberger • Matt Oakes



# Land Auction

Thursday, June 16<sup>th</sup> - 10:00 A.M.



This 80 +/- acre tract is comprised of approximately 35 acres of productive farmland with the remaining acres in heavy timber and wildlife habitat. Both interior and perimeter fences are in good condition. Located only 4 miles from American Horse Lake, this property offers an opportunity for quiet country living. This property could be a great opportunity for a new producer, or would be a great addition to any existing operation. Make plans to join us on June 16<sup>th</sup> at 10:00 a.m. on the property! Watch for signs.



## Auction Held Onsite

### Directions:

From Geary: North on Hwy 270,  
8 mi. West on American Horse Rd.,  
2 mi. North on 2540 Rd.

**Real Estate Terms & Conditions:** 10% of the purchase price of the real estate will be deposited in escrow the day of sale with the balance due upon closing. The Seller will have a reasonable period of time to furnish the abstract. The Buyer will have 15 days to examine the abstract and closing will be within 5 days of acceptance of title. Possession upon closing. Selling surface only. This property sells subject to the Seller's confirmation. Maps/pictures are for reference only. Any announcements sale day take precedence.



**ENTZ**

**Auction & Realty, Inc**

2018 Old 66 Rd. Hydro, OK 73048

405-663-2200 [www.entzauction.com](http://www.entzauction.com)



*Follow Us*



**Converting Assets To Cash!™**

**Your Land & Equipment Auctioneers**

June 2	Farm Equipment - South Of Calumet, OK
June 6	Commercial Building - Eakly, OK
June 16	80 +/- Acres - Northwest Of Geary, OK
June 23	Wall Trust Land Auction - Weatherford/Hydro, OK ~ Deer Creek Tracts - 127 +/- Acres - 5 Tracts ~ 160 +/- Acres Irrigated Farmland W/Center Pivot ~ I-40 Tracts - 250 +/- Acres - 3 Tracts
Aug. 1 & 2	Quarterly Equipment Consignment Auction



SCAN WITH YOUR  
CAMERA FOR MORE  
INFO/ONLINE BIDDING