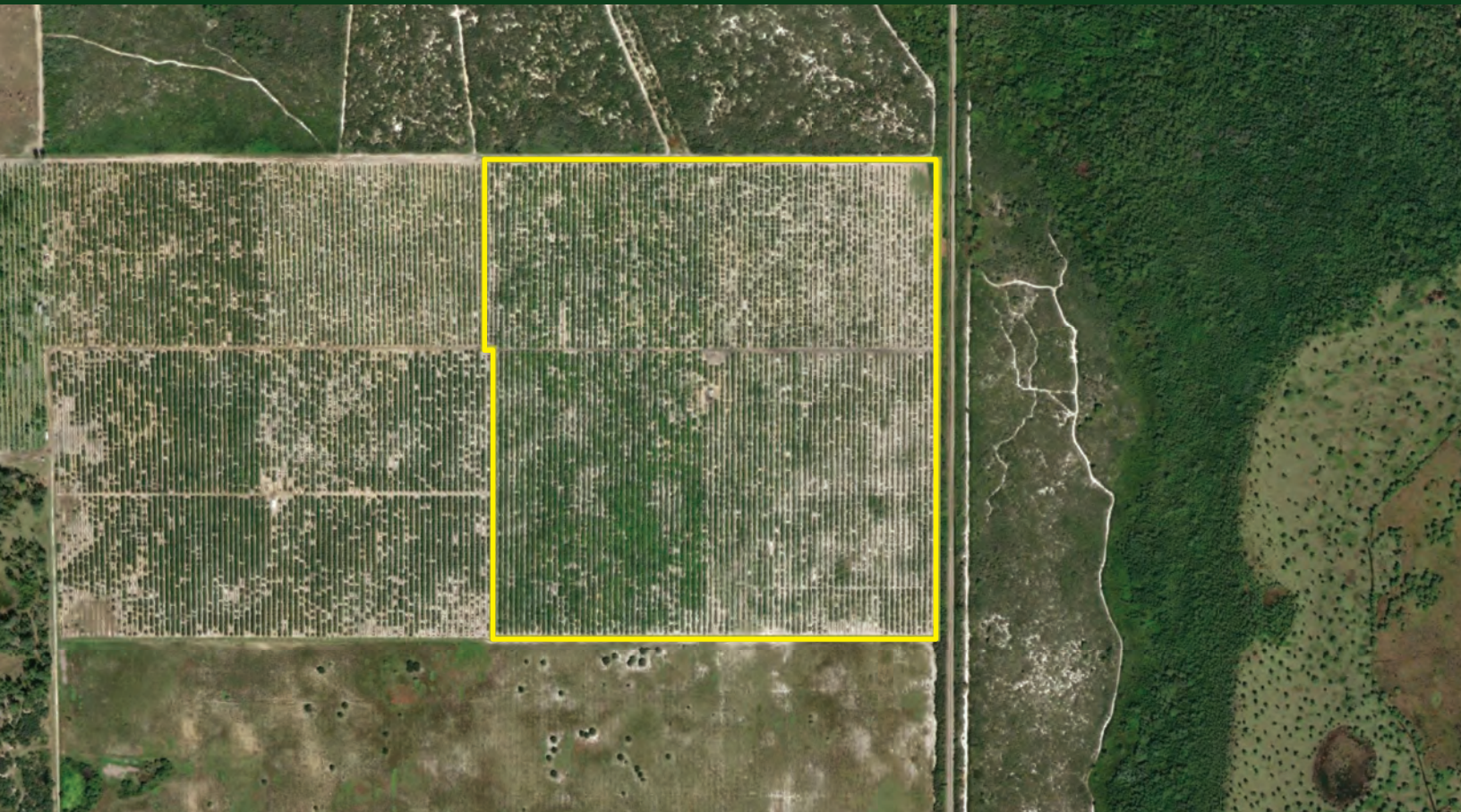


**FOR  
SALE**

## JOSEPHINE CREEK GROVE

Highlands County, Sebring, FL 33876



### ABOUT THE PROPERTY

**SIZE** 100± acres

**PRICE** \$1,050,000

**ZONING** Ag

**PARCEL ID** C-06-36-30-A00-0080-0000

### DESCRIPTION

This property is positioned on the eastern edge of the Lake Wales Ridge. Given the grove's proximity to thousands of acres of conservation land, it offers **phenomenal recreational opportunities**. This property has historically been leased by turkey guides, including ones from major outfitters. This planting offers approximately 34 acres of Hamlins, 16 acres of Midsweets, and 50 acres of Valencias. Due to the 12-inch well located on the property, there is an abundance of high quality water available.

***Call for a showing today!***

**MAURY L. CARTER & ASSOCIATES, INC.**

Licensed Real Estate Brokers | [www.maurycarter.com](http://www.maurycarter.com) | 407-422-3144



**FOR  
SALE**

# **JOSEPHINE CREEK GROVE**

Highlands County, Sebring, FL 33876



**MAURY L. CARTER & ASSOCIATES, INC.**

Licensed Real Estate Brokers | [www.maurycarter.com](http://www.maurycarter.com) | 407-422-3144



**FOR  
SALE**

# JOSEPHINE CREEK GROVE

Highlands County, Sebring, FL 33876



**REGIONAL MAP**

**MAURY L. CARTER & ASSOCIATES, INC.**

Licensed Real Estate Brokers | [www.maurycarter.com](http://www.maurycarter.com) | 407-422-3144



**FOR  
SALE**

# JOSEPHINE CREEK GROVE

Highlands County, Sebring, FL 33876

## DRIVE TIMES

Lake Placid: 15 min

Sebring: 30 min

Arcadia: 50 min

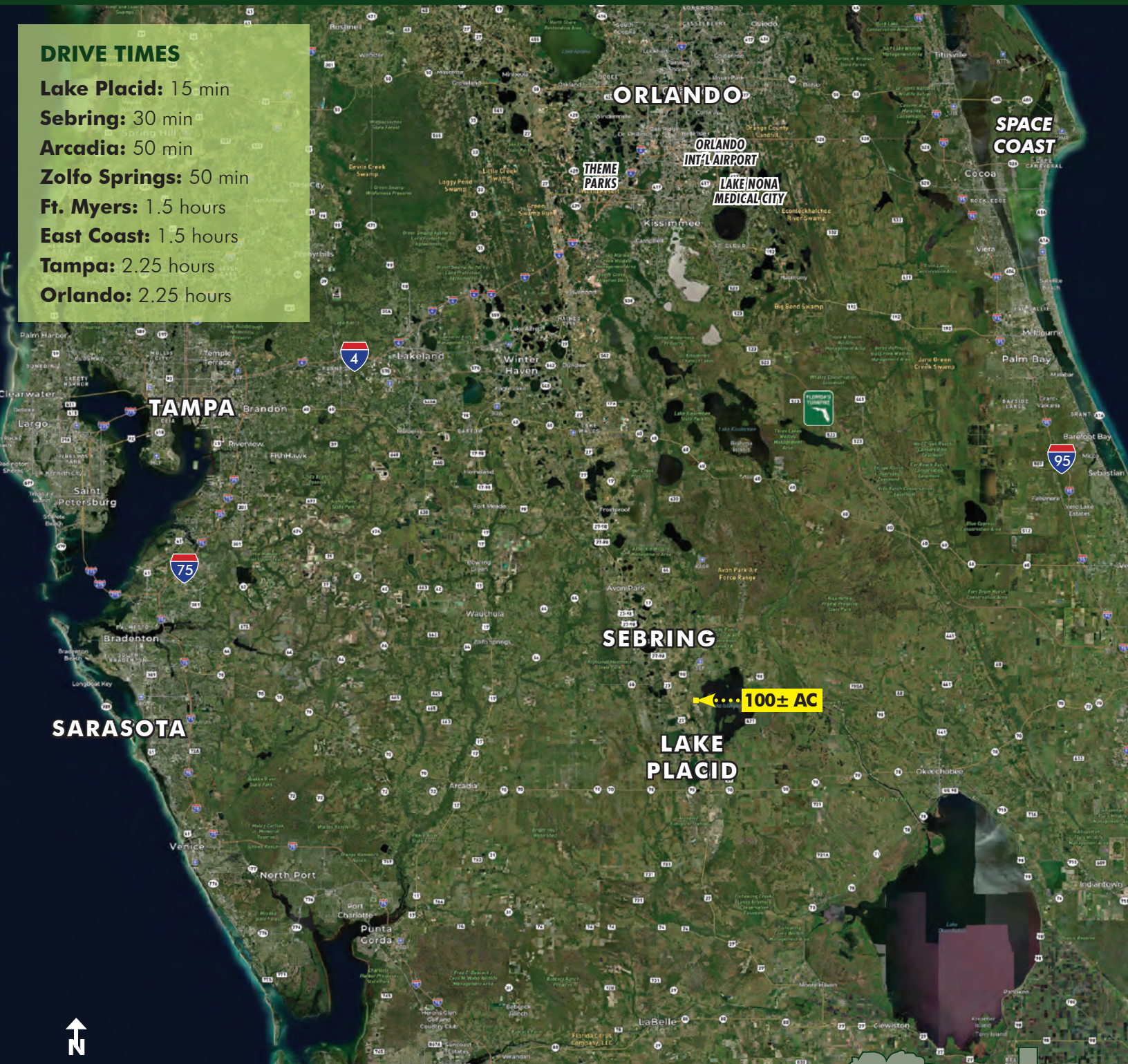
Zolfo Springs: 50 min

Ft. Myers: 1.5 hours

East Coast: 1.5 hours

Tampa: 2.25 hours

Orlando: 2.25 hours



**LOCATION MAP**

**MAURY L. CARTER & ASSOCIATES, INC.**

Licensed Real Estate Brokers | [www.maurycarter.com](http://www.maurycarter.com) | 407-422-3144

