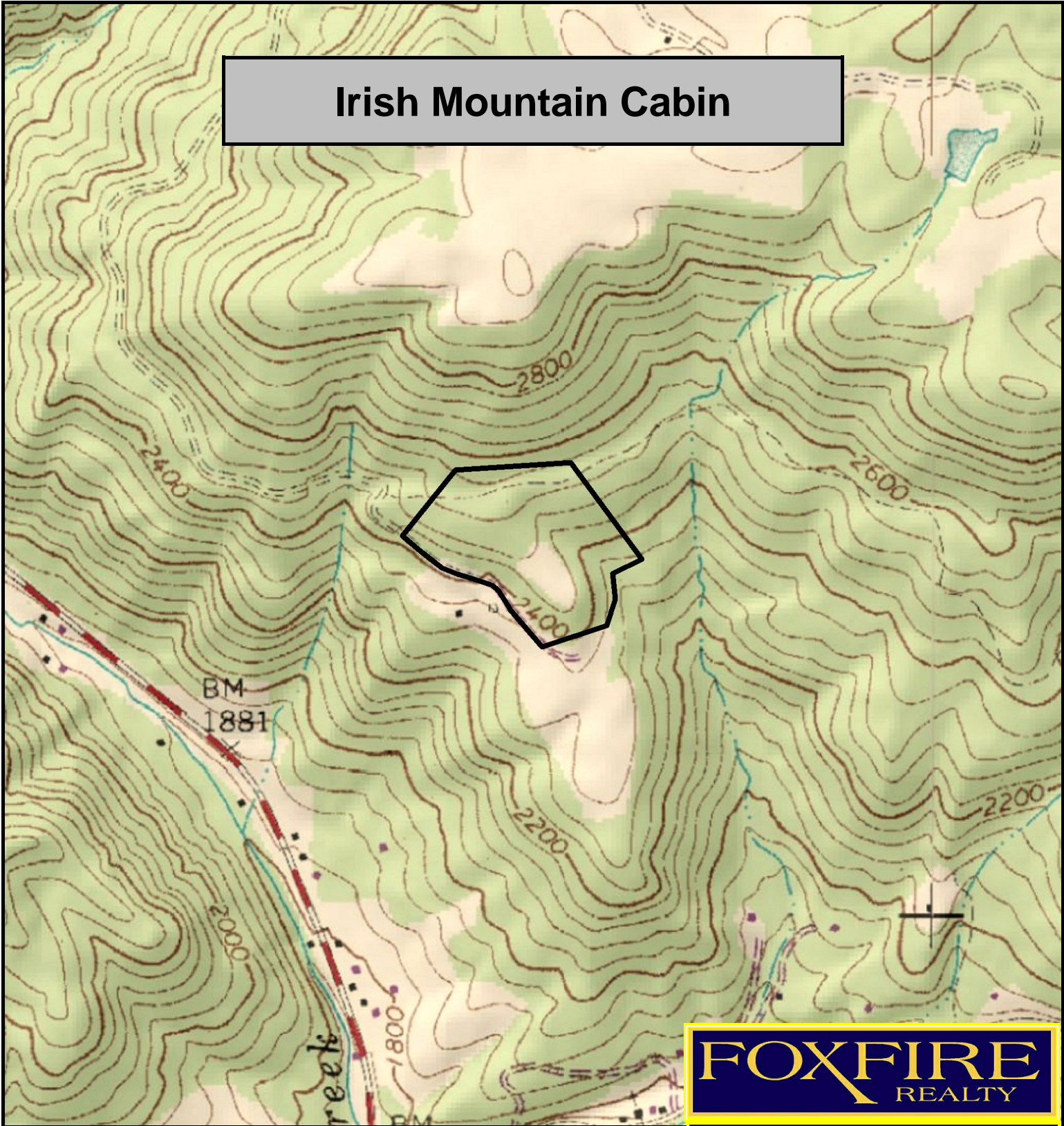
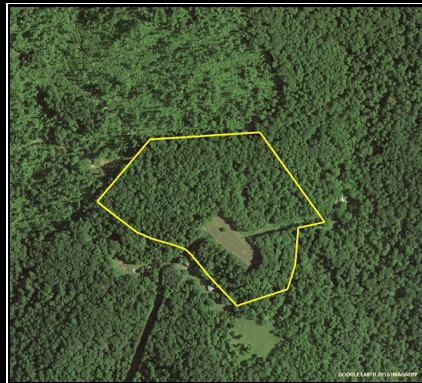


Irish Mountain Cabin



FOXFIRE
REALTY



Irish Mountain Cabin, Summers County, WV
TOPOGRAPHIC MAP
Elevation Range: 2370' - 2595' +/-
Google Coordinates: LAT 37.83952 (N), LON -80.80035 (W)
This map is for general location purposes only. Consult a licensed land surveyor for actual boundary location and acreage.

RICHARD GRIST, Broker - Auctioneer - Forester
304.646.8837 Richard@Foxfirenation.com
WWW.FOXFIRENATION.COM

