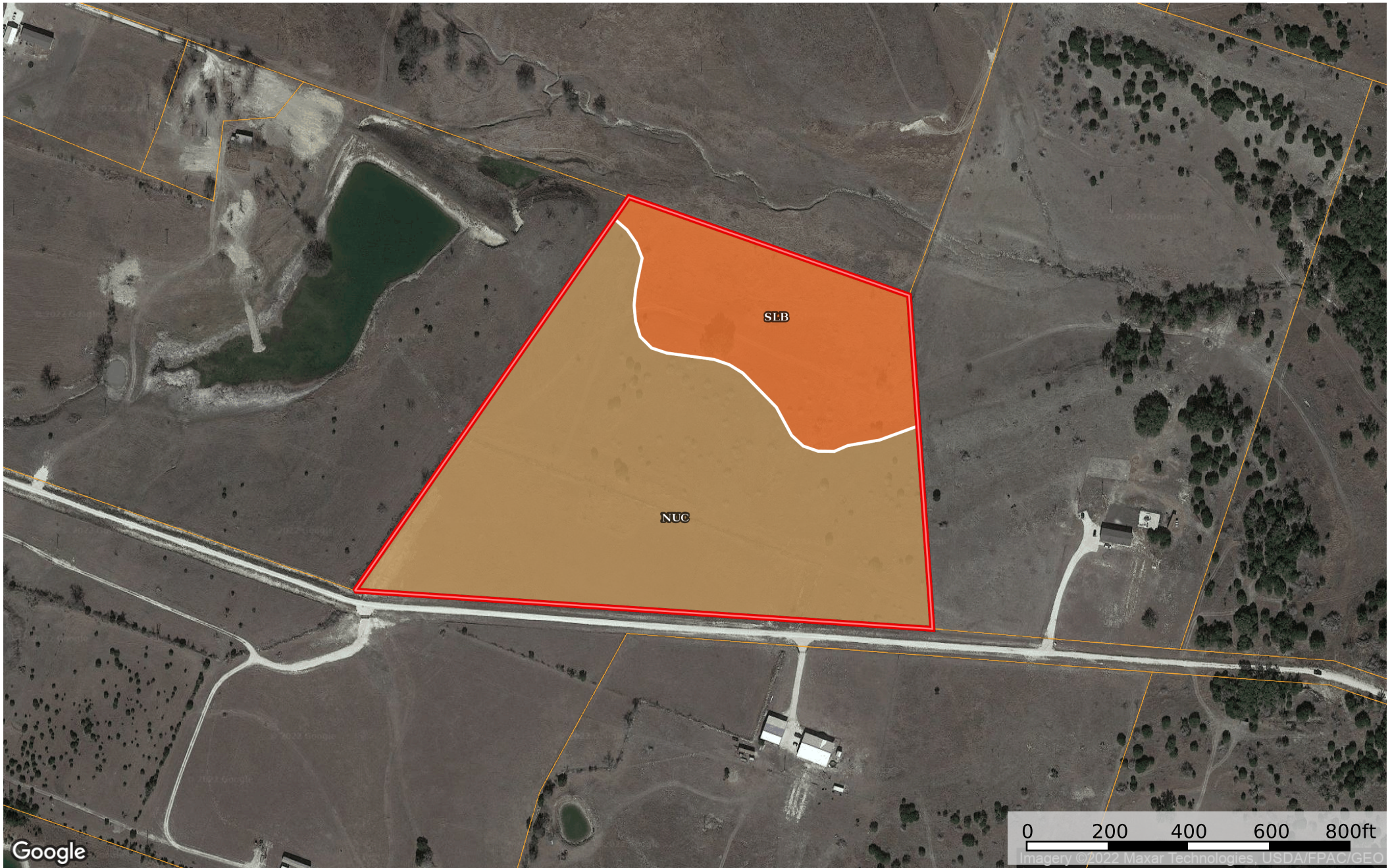


Kress - TBD Private Rd 1391 (Tract 8)
Coryell County, Texas, 23.48 AC +/-



Google



● Circle □ Boundary



The information contained herein was obtained from sources deemed to be reliable. MapRight Services makes no warranties or guarantees as to the completeness or accuracy thereof.

SOIL CODE	SOIL DESCRIPTION	ACRES	%	CPI	NCCPI	CAP
NuC	Nuff very stony silty clay loam, 2 to 6 percent slopes	17.04	73.89	0	28	6s
SIB	Slidell silty clay, 0 to 2 percent slopes	6.02	26.11	0	42	3e
TOTALS		23.06(*)	100%	-	31.65	5.22









(*) Total acres may differ in the second decimal compared to the sum of each acreage soil. This is due to a round error because we only show the acres of each soil with two decimal.

Capability Legend

Increased Limitations and Hazards

Decreased Adaptability and Freedom of Choice Users

Land, Capability

								
	1	2	3	4	5	6	7	8
'Wild Life'	•	•	•	•	•	•	•	•
Forestry	•	•	•	•	•	•	•	
Limited	•	•	•	•	•	•	•	
Moderate	•	•	•	•	•	•		
Intense	•	•	•	•	•			
Limited	•	•	•	•				
Moderate	•	•	•					
Intense	•	•						
Very Intense	•							

Grazing Cultivation

(c) climatic limitations (e) susceptibility to erosion

(s) soil limitations within the rooting zone (w) excess of water