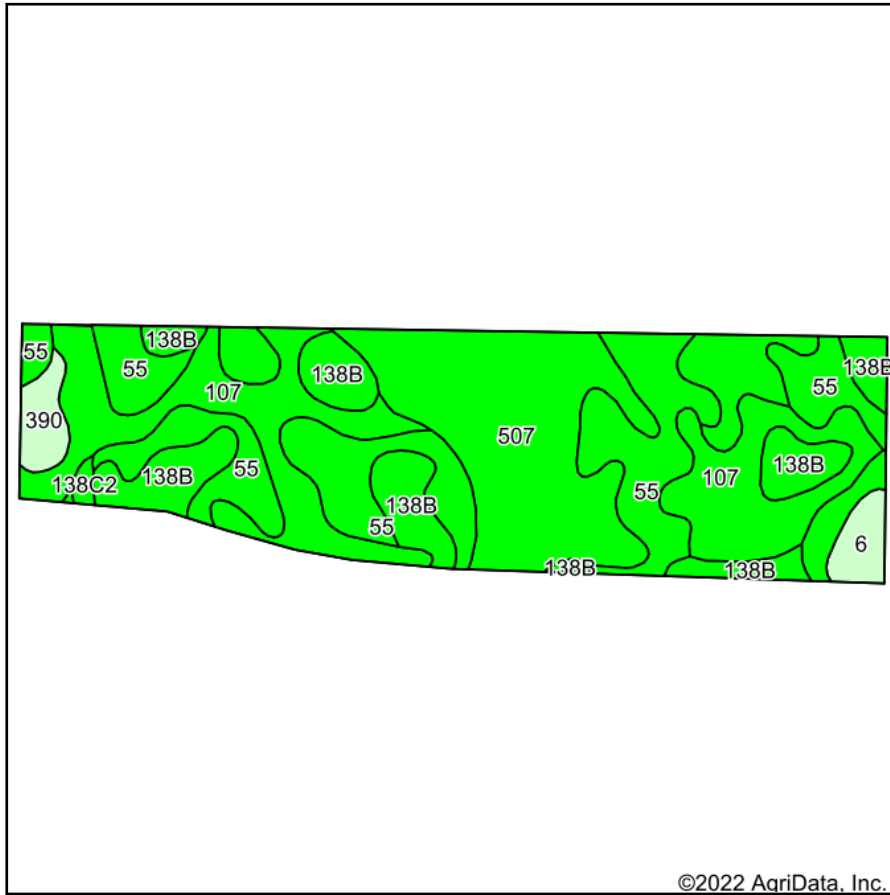
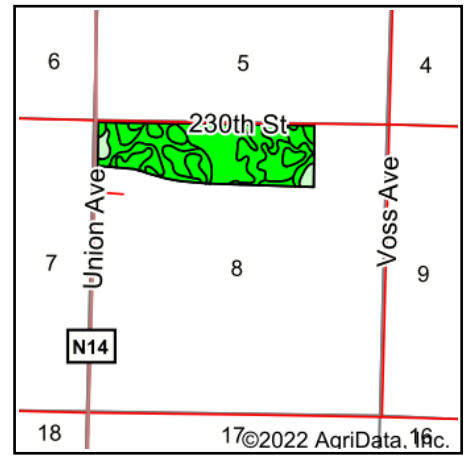


## Soils Map



Soils data provided by USDA and NRCS.



State: **Iowa**  
 County: **Sac**  
 Location: **8-88N-35W**  
 Township: **Cedar**  
 Acres: **90.51**  
 Date: **3/11/2022**



Maps Provided By:



Area Symbol: IA161, Soil Area Version: 29

Code	Soil Description	Acres	Percent of field	CSR2 Legend	Non-Irr Class *c	CSR2**	CSR
507	Canisteo clay loam, 0 to 2 percent slopes	25.74	28.4%		IIw	84	75
55	Nicollet clay loam, 1 to 3 percent slopes	25.61	28.3%		Iw	89	85
107	Webster clay loam, 0 to 2 percent slopes	21.53	23.8%		IIw	86	80
138B	Clarion loam, 2 to 6 percent slopes	13.32	14.7%		Ile	89	77
390	Waldorf silty clay loam, 0 to 2 percent slopes	2.02	2.2%		IIw	69	65
6	Okoboji silty clay loam, 0 to 1 percent slopes	1.91	2.1%		IIIw	59	55
138C2	Clarion loam, 6 to 10 percent slopes, moderately eroded	0.38	0.4%		IIIe	83	61
Weighted Average					1.74	85.8	78.6

\*\*IA has updated the CSR values for each county to CSR2.

\*c: Using Capabilities Class Dominant Condition Aggregation Method  
 Soils data provided by USDA and NRCS.

## PARCEL # 3 - SOIL MAP