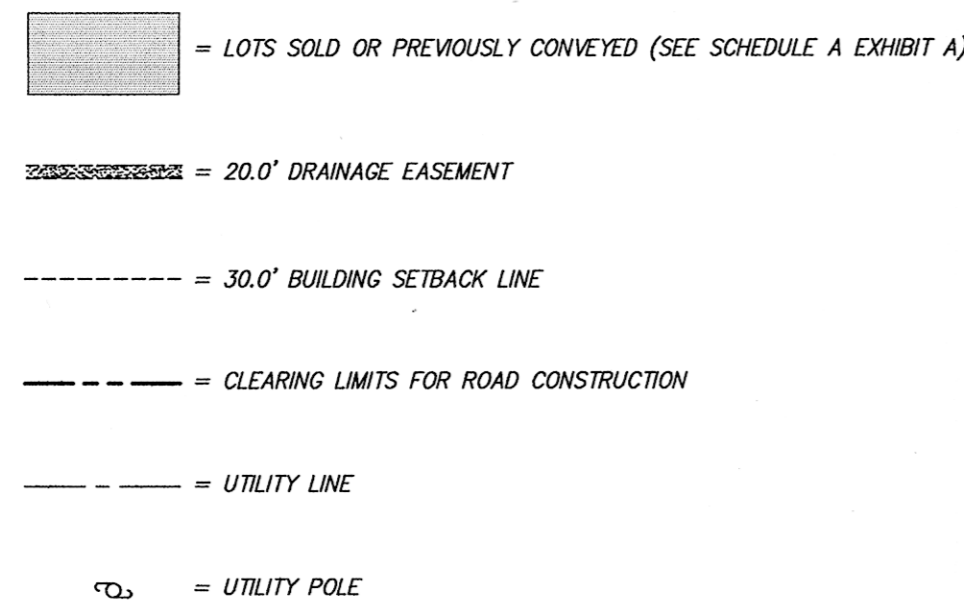


THIS SURVEY HAS BEEN MADE USING THE LATEST RECORDED DEEDS AND OTHER INFORMATION, AND THERE ARE NO ENCROACHMENTS OR PROJECTIONS OTHER THAN THOSE SHOWN HEREON. THIS SURVEY IS SUBJECT TO THE FINDINGS OF A TITLE REPORT.

COURTESY SURVEY  
JERRY W. CRUTCHFIELD R.L.S. 1612  
105 LIBERTY STREET  
JACKSONBORO, TENNESSEE 37375  
(423) 566-1483 office  
(423) 566-1382 fax  
(423) 562-8285 home

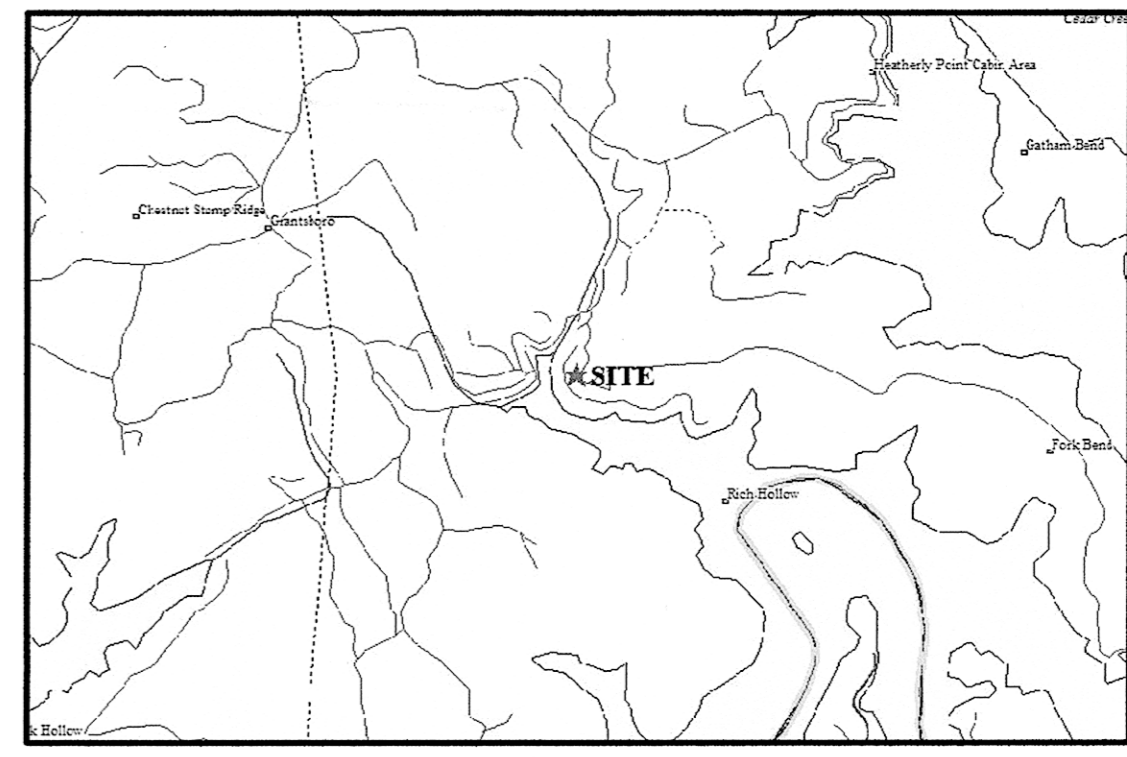


#### SURVEYOR'S CERTIFICATION

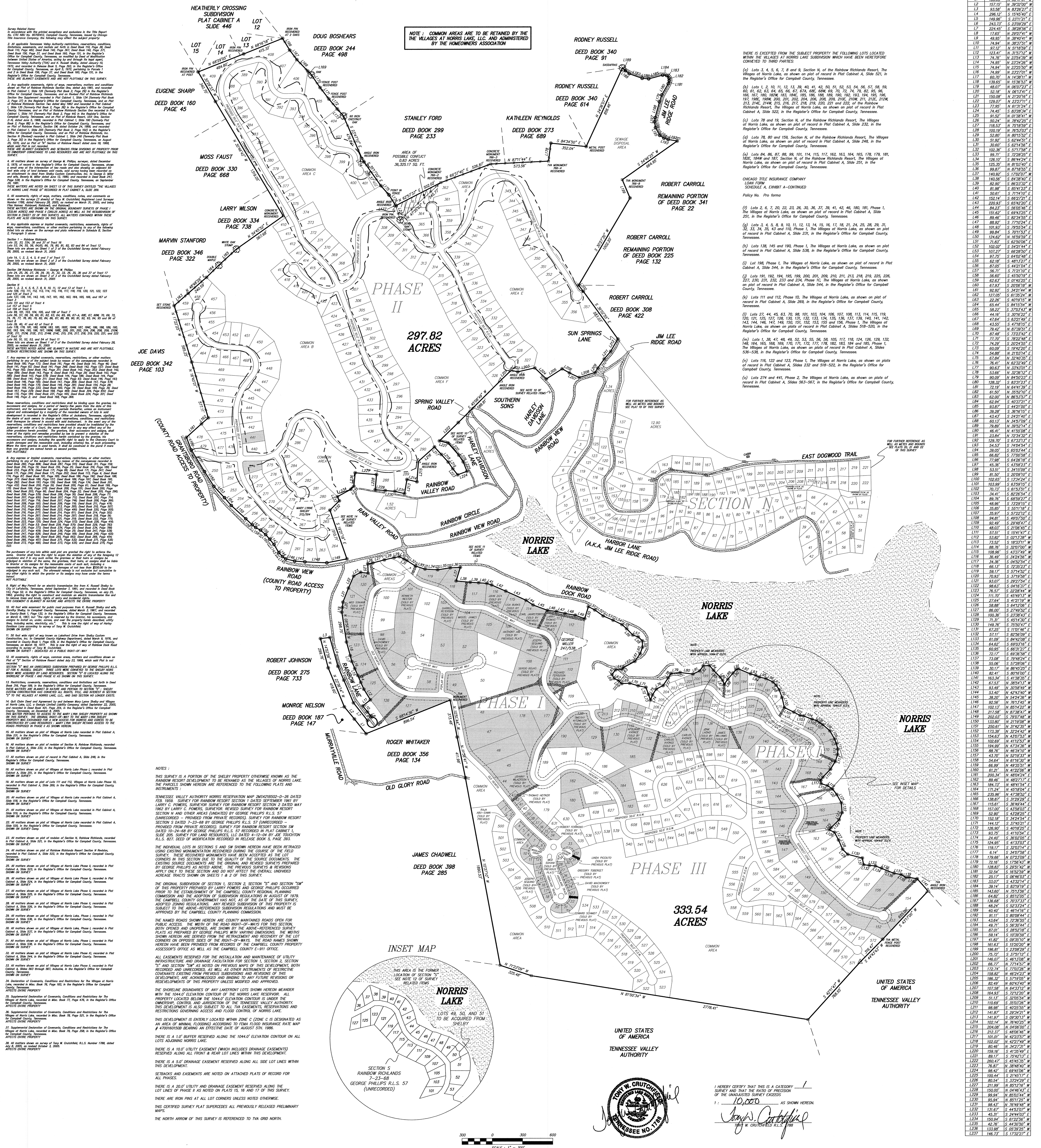
I, Tony W. Crutchfield R.L.S. 1788, hereby certify to KeyBank, National Association, as Agent, its successors and assigns, Chicago Title Insurance Company, that the survey prepared by me entitled "The Villages at Norris Lake - Phase I, II & III" was actually made upon the ground and that the information, courses and distances shown thereon are correct; that the title lines and lines of actual possession are the same; that there are no encroachments, encumbrances or use affecting this property appearing from a careful physical inspection of the same, other than those shown and depicted thereon; that all utility services required for the operations of the premises either enter the premises through adjoining public streets, or the survey shows the point of entry and location of any utilities which pass through or are located on adjoining private land; that the survey shows the location and direction of all storm drainage systems for the collection and disposal of all surface drainage; that any discharge into streams, rivers or any other waterway is shown on the survey; and that the parcels described herein do not lie within flood hazard areas in accordance with the document entitled "Special Flood Hazard Area Map", the survey includes ALTA and ALTA PLUS (as established and adopted in 2003) optional items 1, 3, 4 (in square feet or acres), (if any as to subplots), 6, 10, 11(3), and 12 (if buildings are located on the parcels optional items 3(1) and 3(2)). The undersigned certifies that in his professional opinion, as a land surveyor registered in the State of Tennessee, the maximum Relative Positional Accuracy resulting from the measurements made on the survey does not exceed the Absolute Relative Positional Accuracy for Measurements Controlling Land Boundaries on ALTA/ACSM Land Title Survey.

2.

#### LOCATION MAP



NO SCALE



LINE TABLE DATA		
1	198.67	S 41°08'51" E
2	185.65	N 38°41'51" W
3	155.15	S 41°08'51" E
4	83.58	N 83°26'27" E
5	208.12	S 10°45'50" E
6	148.86	S 41°08'51" E
7	243.71	S 43°09'29" E
8	224.85	S 41°08'51" E
9	126.5	N 28°07'41" W
10	49.86	N 38°41'51" E
11	24.89	N 38°41'51" E
12	91.21	N 51°18'59" E
13	124.01	N 38°41'51" E
14	74.78	N 25°24'39" W
15	14.78	N 25°24'39" W
16	18.65	N 25°24'39" W
17	14.78	N 25°24'39" W
18	24.89	N 38°41'51" E
19	24.89	N 38°41'51" E
20	24.89	N 38°41'51" E
21	24.89	N 38°41'51" E
22	24.89	N 38°41'51" E
23	24.89	N 38°41'51" E
24	24.89	N 38°41'51" E
25	24.89	N 38°41'51" E
26	24.89	N 38°41'51" E
27	24.89	N 38°41'51" E
28	24.89	N 38°41'51" E
29	24.89	N 38°41'51" E
30	24.89	N 38°41'51" E
31	24.89	N 38°41'51" E
32	24.89	N 38°41'51" E
33	24.89	N 38°41'51" E
34	24.89	N 38°41'51" E
35	24.89	N 38°41'51" E
36	24.89	N 38°41'51" E
37	24.89	N 38°41'51" E
38	24.89	N 38°41'51" E
39	24.89	N 38°41'51" E
40	24.89	N 38°41'51" E
41	24.89	N 38°41'51" E
42	24.89	N 38°41'51" E
43	24.89	N 38°41'51" E
44	24.89	N 38°41'51" E
45	24.89	N 38°41'51" E
46	24.89	N 38°41'51" E
47	24.89	N 38°41'51" E
48	24.89	N 38°41'51" E
49	24.89	N 38°41'51" E
50	24.89	N 38°41'51" E
51	24.89	N 38°41'51" E
52	24.89	N 38°41'51" E
53	24.89	N 38°41'51" E
54	24.89	N 38°41'51" E
55	24.89	N 38°41'51" E
56	24.89	N 38°41'51" E
57	24.89	N 38°41'51" E
58	24.89	N 38°41'51" E
59	24.89	N 38°41'51" E
60	24.89	N 38°41'51" E
61	24.89	N 38°41'51" E
62	24.89	N 38°41'51" E
63	24.89	N 38°41'51" E
64	24.89	N 38°41'51" E
65	24.89	N 38°41'51" E
66	24.89	N 38°41'51" E
67	24.89	N 38°41'51" E
68	24.89	N 38°41'51" E
69	24.89	N 38°41'51" E
70	24.89	N 38°41'51" E
71	24.89	N 38°41'51" E
72	24.89	N 38°41'51" E
73	24.89	N 38°41'51" E
74	24.89	N 38°41'51" E
75	24.89	N 38°41'51" E
76	24.89	N 38°41'51" E
77	24.89	N 38°41'51" E
78	24.89	N 38°41'51" E
79	24.89	N 38°41'51" E
80	24.89	N 38°41'51" E
81	24.89	N 38°41'51" E
82	24.89	N 38°41'51" E
83	24.89	N 38°41'51" E
84	24.89	N 38°41'51" E
85	24.89	N 38°41'51" E
86	24.89	N 38°41'51" E
87	24.89	N 38°41'51" E
88	24.89	N 38°41'51" E
89	24.89	N 38°41'51" E
90	24.89	N 38°41'51" E
91	24.89	N 38°41'51" E
92	24.89	N 38°41'51" E
93	24.89	N 38°41'51" E
94	24.89	N 38°41'51" E
95	24.89	N 38°41'51" E
96	24.89	N 38°41'51" E
97	24.89	N 38°41'51" E
98	24.89	N 38°41'51" E
99	24.89	N 38°41'51" E
100	24.89	N 38°41'51" E
101	24.89	N 38°41'51" E
102	24.89	N 38°41'51" E
103	24.89	N 38°41'51" E
104	24.89	N 38°41'51" E
105	24.89	N 38°41'51" E
106	24.89	N 38°41'51" E
107	24.89	N 38°41'51" E
108	24.89	N 38°41'51" E
109	24.89	N 38°41'51" E
110	24.89	N 38°41'51" E
111	24.89	N 38°41'51" E
112	24.89	N 38°41'51" E
113	24.89	N 38°41'51" E
114	24.89	N 38°41'51" E
115	24.89	N 38°41'51" E
116	24.89	N 38°41'51" E
117	24.89	N 38°41'51" E
118	24.89	N 38°41'51" E
119	24.89	N 38°41'51" E
120	24.89	N 38°41'51" E
121	24.89	N 38°41'51" E
122	24.89	N 38°41'51" E
123	24.89	N 38°41'51" E
124	24.89	N 38°41'51" E
125	24.89	N 38°41'51" E
126	24.89	N 38°41'51" E
127	24.89	N 38°41'51" E
128	24.89	N 38°41'51" E
129	24.89	N 38°41'51" E
130	24.89	N 38°41'51" E
131	24.89	N 38°41'51" E
132	24.89	N 38°41'51" E
133	24.89	N 38°41'51" E
134	24.89	N 38°41'51" E
135	24.89	N 38°41'51" E
136	24.89	N 38°41'51" E
137	24.89	N 38°41'51" E
138	24.89	N 38°41'51" E
139	24.89	N 38°41'51" E
140	24.89	N 38°41'51" E
141	24.89	N 38°41'51" E
142	24.89	N 38°41'51" E
143	24.89	N 38°41'51" E
144	24.89	N 38°41'51" E
145	24.89	N 38°41'51" E
146	24.89	N 38°41'51" E
147	24.89	N 38°41'51" E
148	24.89	N 38°41'51" E
149	24.89	N 38°41'51" E
150	24.89	N 38°41'51" E
151	24.89	N 38°41'51" E
152	24.89	N 38°41'51" E
153	24.89	N 38°41'51" E
154	24.89	N 38°41'51" E
155	24.89	N 38°41'51" E
156	24.89	N 38°41'51" E
157	24.89	N 38°41'51" E
158	24.89	N 38°41'51" E
159	24.89	N 38°41'51" E
160	24.89	N 38°41'51" E
161	24.89	N 38°41'51" E
162	24.89	N 38°41'51" E
163	24.89	N 38°41'51" E
164	24.89	N 38°41'51" E
165	24.89	N 38°41'51" E
166	24.89	N 38°41'51" E
167	24.89	N 38°41'51" E
168	24.89	N 38°41'51" E
169	24.89	N 38°41'51" E
170	24.89	N 38°41'51" E
171	24.89	N 38°41'51" E
172	24.89	N 38°41'51" E
173	24.89	N 38°41'51" E
174	24.89	N 38°41'51" E
175	24.89	N 38°41'51" E
176	24.89	N 38°41'51" E
177	24.89	N 38°41'51" E
178	24.89	N 38°41'51" E
179	24.89	N 38°41'51" E
180	24.89	N 38°41'51" E
181	24.89	N 38°41'51" E
182	24.89	N 38°41'51" E
183	24.89	N 38°41'51" E
184	24.89	N 38°41'51" E
185	24.89	N 38°41'51" E
186	24.89	N 38°41'51" E
187	24.89	N 38°41'51" E
188	24.89	N 38°41'51" E
189	24.89	N 38°41'51" E
190	24.89	N 38°41'51" E
191	24.89	N 38°41'51" E
192	24.89	N 38°41'51" E
193	24.89	N 38°41'51" E
194	24.89	N 38°41'51" E
195	24.89	N 38°41'51" E
196	24.89	N 38°41'51" E
197	24.89	N 38°41'51" E
198	24.89	N 38°41'51" E
199	24.89	N 38°41'51" E
200	24.89	N 38°41'51" E
201	24.89	N 38°41'51" E
202	24.89	N 38°41'51" E
203	24.89	N 38°41'51" E
204	24.89	N 38°41'51" E
205	24.89	N 38°41'51" E
206	24.89	N 38°41'51" E
207	24.89	N 38°41'51" E
208	24.89	N 38°41'51" E
209	24.89	N 38°41'51" E
210	24.89	N 38°41'51" E
211	24.89	N 38°41'51" E
212	24.89	N 38°41'51" E
213	24.89	N 38°41'51" E
214	24.89	N 38°41'51" E
215	24.89	N 38°41'51" E
216	24.89	N 38°41'51" E
217	24.89	N 38°41'51" E
218	24.89	N 38°41'51" E
219	24.89	N 38°41'51" E
220	24.89	N 38°41'51" E
221	24.89	N 38°41'51" E
222	24.89	N 38°41'51" E
223	24.89	N 38°41'51" E
224	24.89	N 38°41'51" E
225	24.89	N 38°41'51" E
226	24.89	N 38°41'51" E
227	24.89	N 38°41'51" E
228	24.89	N 38°41'51" E
229	24.89	N 38°41'51" E
230	24.89	N 38°41'51" E
231	24.89	N 38°41'51" E
232	24.89	N 38°41'51" E
233	24.89	N 38°41'51" E
234	24.89	N 38°41'51" E
235	24.89	N 38°41'51" E
236	24.89	N 38°41'51" E
237	24.89	N 38°41'51" E
238	24.89	N 38°41'51" E
239	24.89	N 38°41'51" E
240	24.89	N 38°41'51" E
241	24.89	N 38°41'51" E
242	24.89	N 38°41'51" E
243	24.89	N 38°41'51" E
244	24.89	N 38°41'51" E
245	24.89	N 38°41'51" E
246	24.89	N 38°41'51" E
247	24.89	N 38°41'51" E
248	24.89	N 38°41'51" E
249	24.89	N 38°41'51" E
250	24.89	N 38°41'51" E
251	24.89	N 38°41'51" E
252	24.89	N 38°41'51" E
253	24.89	N 38°41'51" E
254	24.89	N 38°41'51" E
255	24.89	N 38°41'51" E
256	24.89	N 38°41'51" E
257	24.89	N 38°41'51" E
258	24.89	N 38°41'51" E
259	24.89	N 38°41'51" E
260	24.89	N 38°41'51" E
261	24.89	N 38°41'51" E
262	24.89	N 38°41'51" E
263	24.89	N 38°41'51" E
264	24.89	N 38°41'51" E
265	24.89	N 38°41'51" E
266	24.89	N 38°41'51" E
267	24.89	N 38°41'51" E
268	24.89	N 38°41'51" E
269	24.89	N 38°41'51" E
270	24.89	N 38°41'51" E
271	24.89	N 38°41'51" E
272	24.89	N 38°41'51" E
273	24.89	N 38°41'51" E
274	24.89	N 38°41'51" E
275	24.89	N 38°41'51" E
276	24.89	N 38°41'51" E
277	24.89	N 38°41'51" E
278	24.89	N 38°41'51" E
279	24.89	N 38°41'51" E
280	24.89	N 38°41'51" E
281	24.89	N 38°41'51" E
282	24.89	N 38°41'51" E
283	24.89	N 38°41'51" E
284	24.89	N 38°41'51" E
285	24.89	N 38°41'51" E
286	24.89	N 38°41'51" E
287	24.89	N 38°41'51" E
288	24.89	N 38°41'51" E
289	24.89	N 38°41'51" E
290	24.89	N 38°41'51" E
291	24.89	N 38°41'51" E
292	24.89	N 38°41'51" E
293	24.89	N 38°41'51" E
294	24.89	N 38°41'51" E
295	24.89	N 38°41'51" E
296	24.89	N 38°41'51" E
297	24.89	N 38°41'51" E
298	24.89	N 38°41'51" E
299	24.89	N 38°41'51" E
300	24.89	N 38°41'51" E