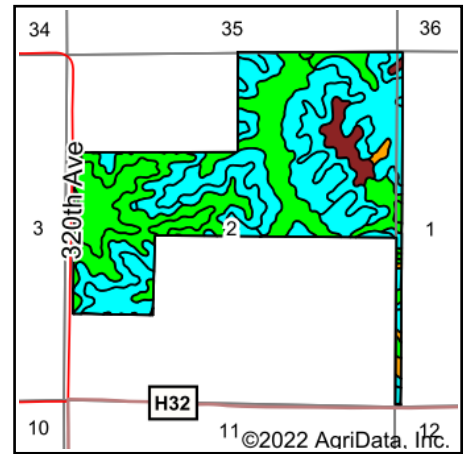
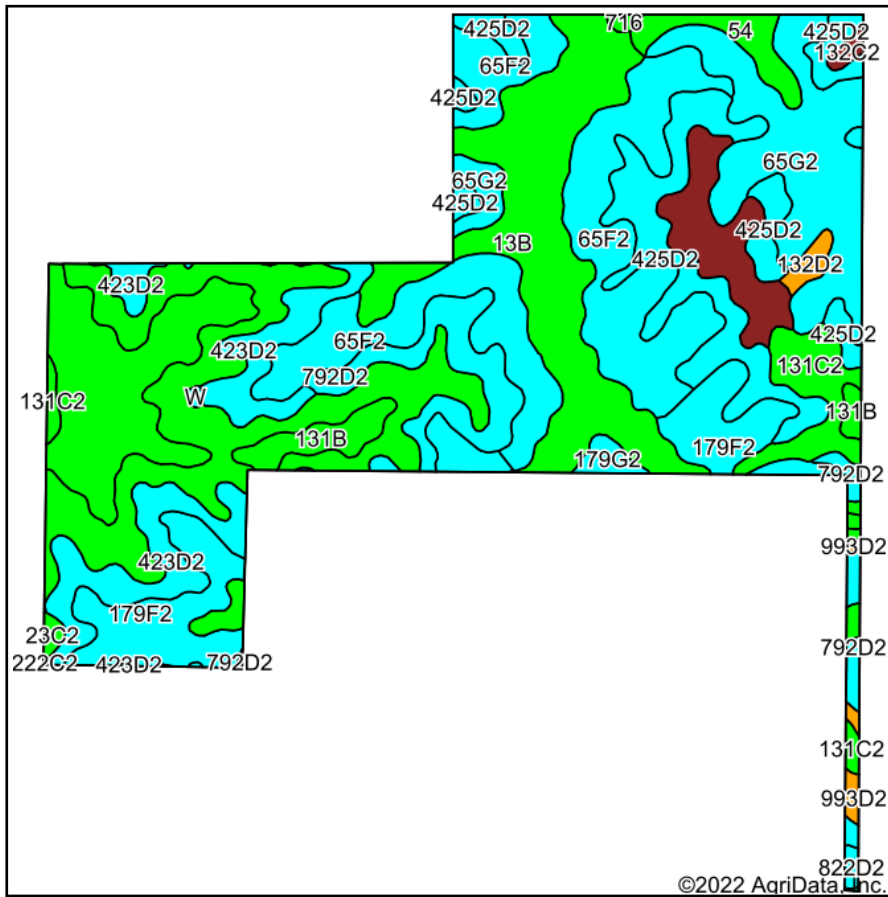


Soils Map



State: **Iowa**
 County: **Lucas**
 Location: **2-72N-20W**
 Township: **Cedar**
 Acres: **297**
 Date: **6/24/2022**

Hawkeye Farm Mgmt & Real Estate



22 N Main, Albion IA Phone: 641-932-7796
 Email: hawkeye@uciowa.com
 On the web: www.uciowa.com
 www.iowawhitetailfarms.com

Maps Provided By:



Area Symbol: IA117, Soil Area Version: 30

Code	Soil Description	Acres	Percent of field	CSR2 Legend	Non-Irr Class *c	CSR2**	CSR	*n NCCPI Soybeans
65F2	Lindley loam, 18 to 25 percent slopes, moderately eroded	48.82	16.4%		Vlle	10	8	39
131C2	Pershing silty clay loam, 5 to 9 percent slopes, moderately eroded	46.25	15.6%		IIle	62	45	57
13B	Zook-Olmitz-Vesser complex, 0 to 5 percent slopes	39.14	13.2%		IIlw	68	53	74
65G2	Lindley loam, 25 to 40 percent slopes, moderately eroded	29.10	9.8%		Vlle	5	5	9
131B	Pershing silt loam, 2 to 5 percent slopes	28.18	9.5%		IIle	70	67	60
425D2	Keswick clay loam, 9 to 14 percent slopes, moderately eroded	26.64	9.0%		IVe	8	12	39
179F2	Gara clay loam, 18 to 25 percent slopes, moderately eroded	25.15	8.5%		IVe	11	13	35
423D2	Bucknell silty clay loam, 9 to 14 percent slopes, moderately eroded	20.45	6.9%		IVe	6	13	44
792D2	Armstrong clay loam, 9 to 14 percent slopes, moderately eroded	11.77	4.0%		IVe	5	13	40
132C2	Weller silty clay loam, 5 to 9 percent slopes, moderately eroded	11.08	3.7%		IIle	59	40	71
54	Zook silty clay loam, heavy till, 0 to 2 percent slopes, occasionally flooded	4.53	1.5%		IIlw	68	75	68
179G2	Gara clay loam, 25 to 40 percent slopes, moderately eroded	1.54	0.5%		Vlle	5	5	8
132D2	Weller silty clay loam, 9 to 14 percent slopes, moderately eroded	1.43	0.5%		IVe	34	28	66
993D2	Gara-Armstrong complex, 9 to 14 percent slopes, moderately eroded	1.03	0.3%		IVe	32	31	46
23C2	Arispe silty clay loam, 5 to 9 percent slopes, moderately eroded	0.64	0.2%		IIle	62	50	69
822D2	Lamoni silty clay loam, 9 to 14 percent slopes, moderately eroded	0.54	0.2%		IVe	10	15	50
716	Lawson-Quiver-Nodaway complex, 0 to 2 percent slopes, occasionally flooded	0.45	0.2%		IIlw	78		87
W	Water	0.26	0.1%			0	0	
Weighted Average					*-	33.5	*-	*n 47.3

**IA has updated the CSR values for each county to CSR2.

*- CSR weighted average cannot be calculated on the current soils data, use prior data version for csr values.

*n: The aggregation method is "Weighted Average using all components"

*c: Using Capabilities Class Dominant Condition Aggregation Method

*- Non Irr Class weighted average cannot be calculated on the current soils data due to missing data.

Soils data provided by USDA and NRCS.