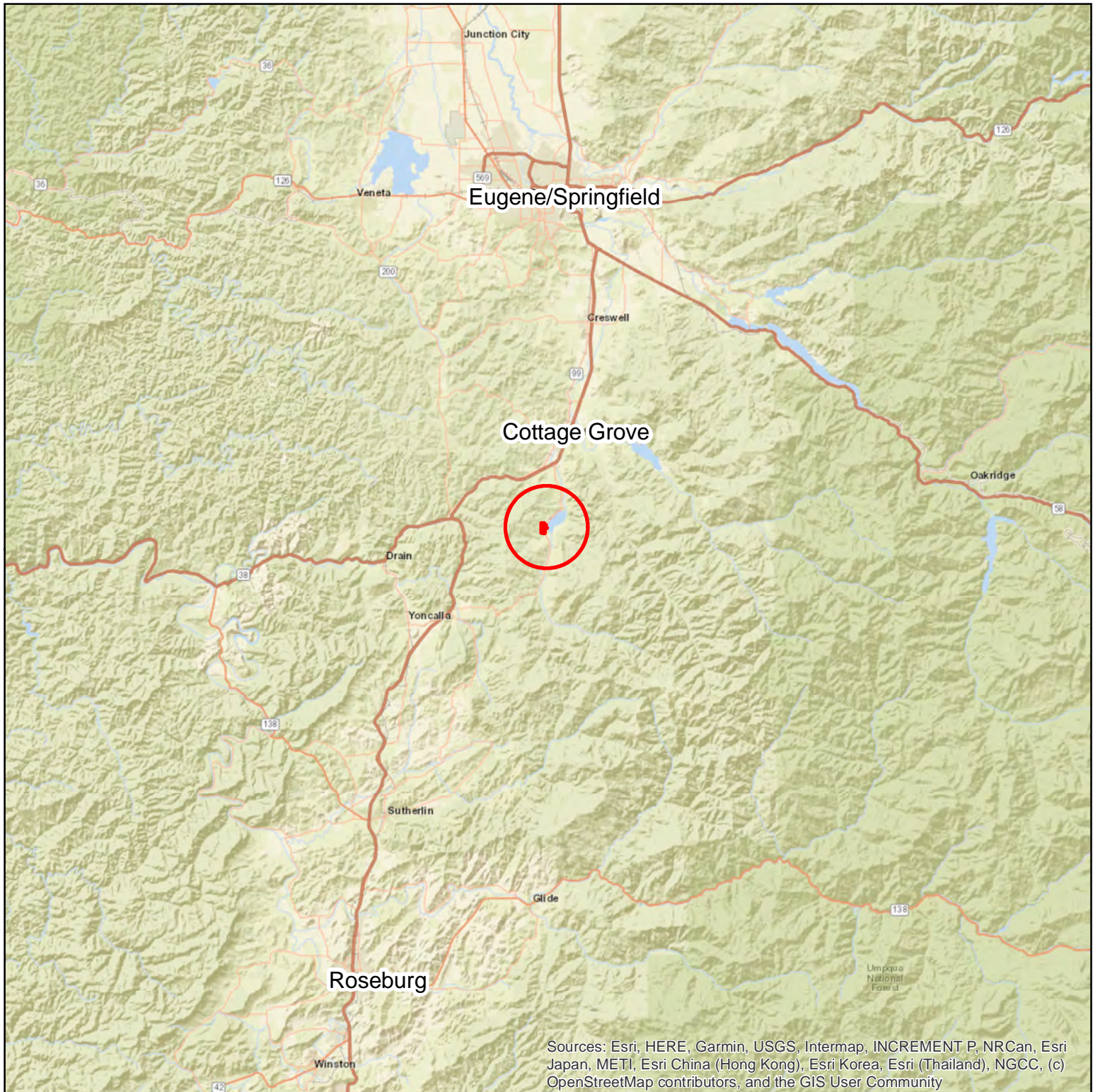


KINWOOD TREE FARM TRUST
Tax Lot 600, Section 32, T21S, R3W
Lane County, Oregon
144.67 Acres (m/l)

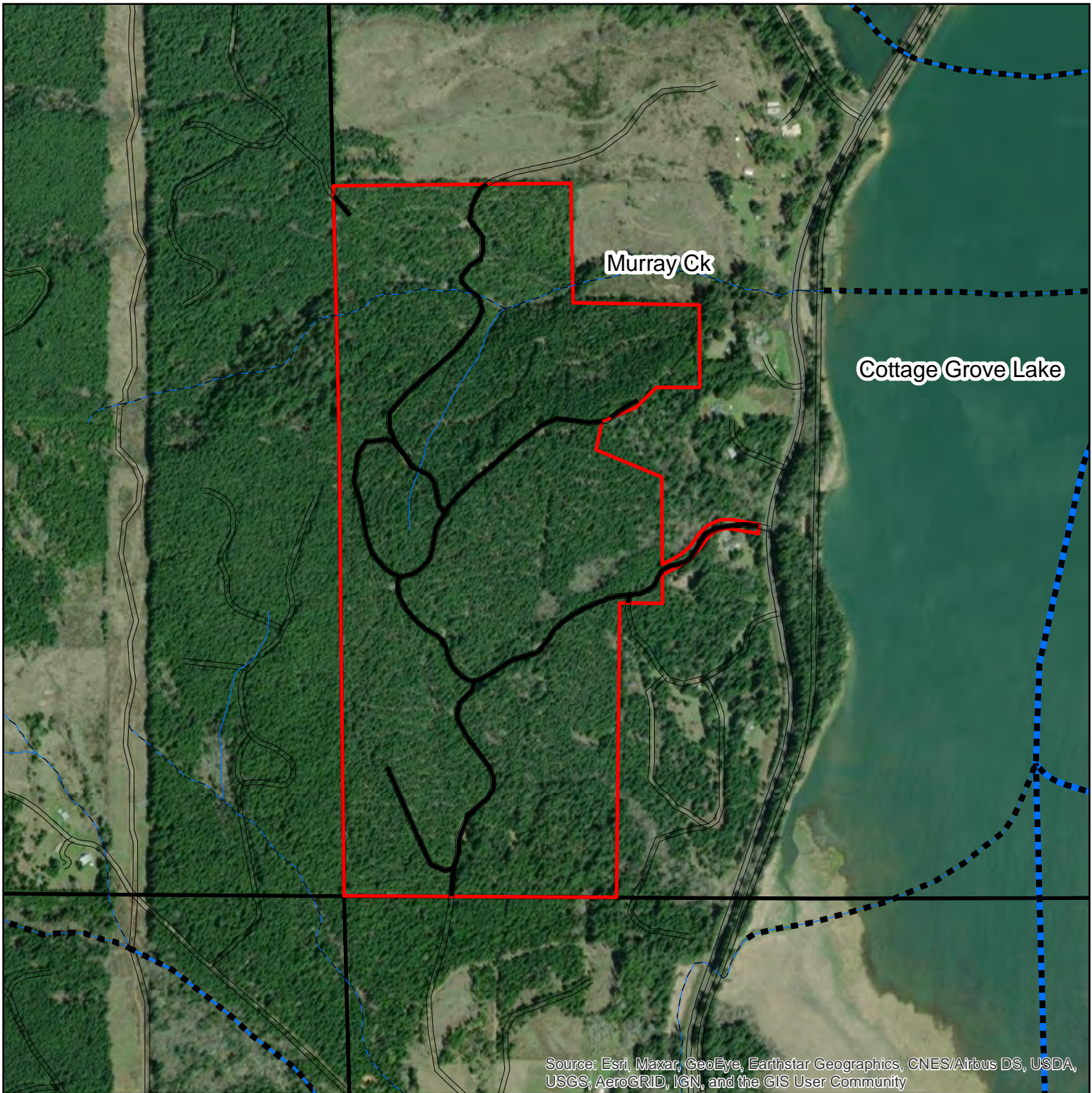


Sources: Esri, HERE, Garmin, USGS, Intermap, INCREMENT P, NRCan, Esri Japan, METI, Esri China (Hong Kong), Esri Korea, Esri (Thailand), NGCC, (c) OpenStreetMap contributors, and the GIS User Community





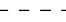





1 inch equals 10 miles

KINWOOD TREE FARM TRUST
Tax Lot 600, Section 32, T21S, R3W
Lane County, Oregon
144.67 Acres (m/l)

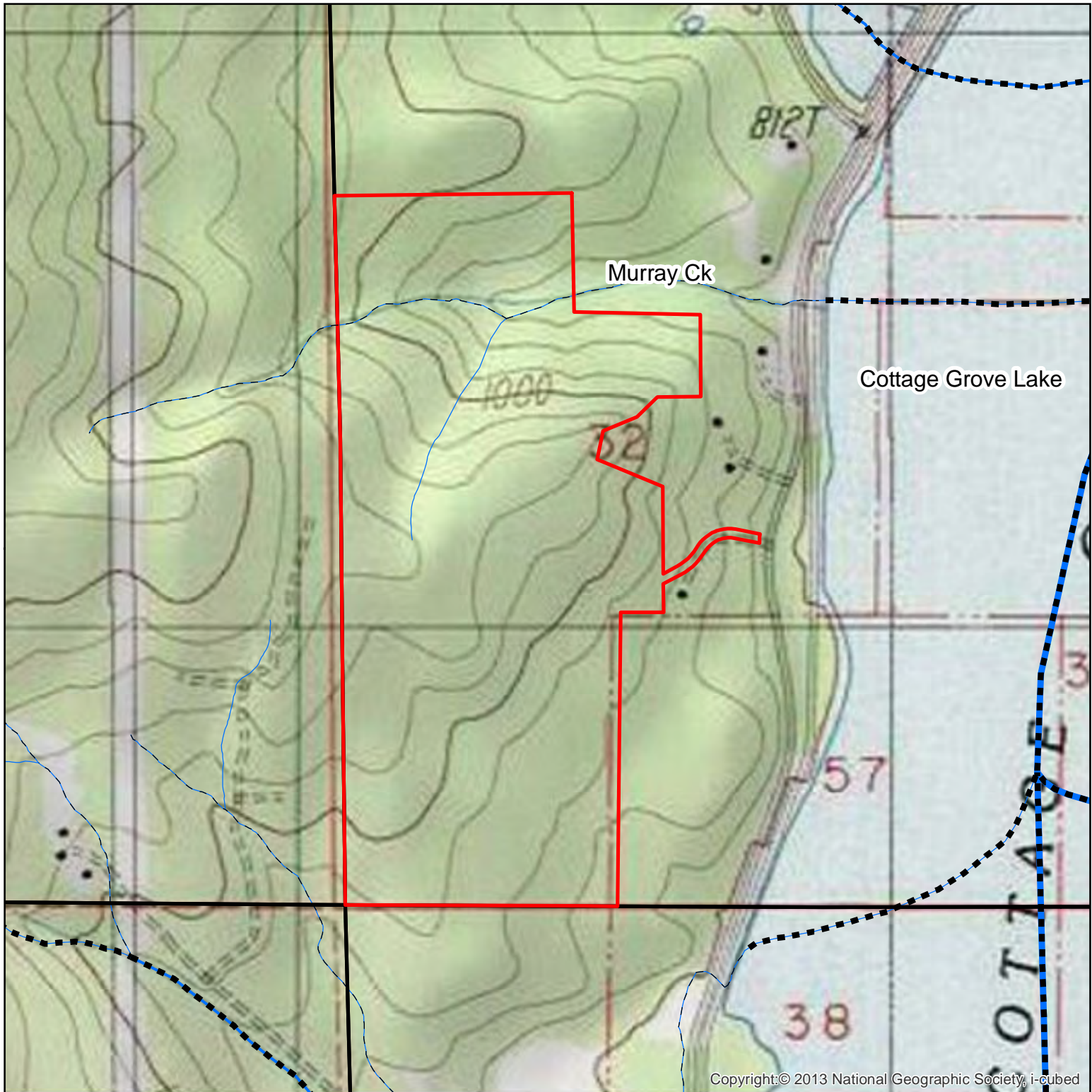


1 inch = 750 feet

Property Boundary	Fish Presence	Stream Size
	 Fish	 Large
 Kinwood Roads	 Unknown	 Medium
		 Small
		 Unknown



KINWOOD TREE FARM TRUST
Tax Lot 600, Section 32, T21S, R3W
Lane County, Oregon
144.67 Acres (m/l)



Copyright © 2013 National Geographic Society, i-cubed



1 inch = 750 feet



Property Boundary

Fish Presence

■ ■ ■ ■ Fish

- - - - Unknown

Stream Size

— Large

— Medium

— Small

--- Unknown

