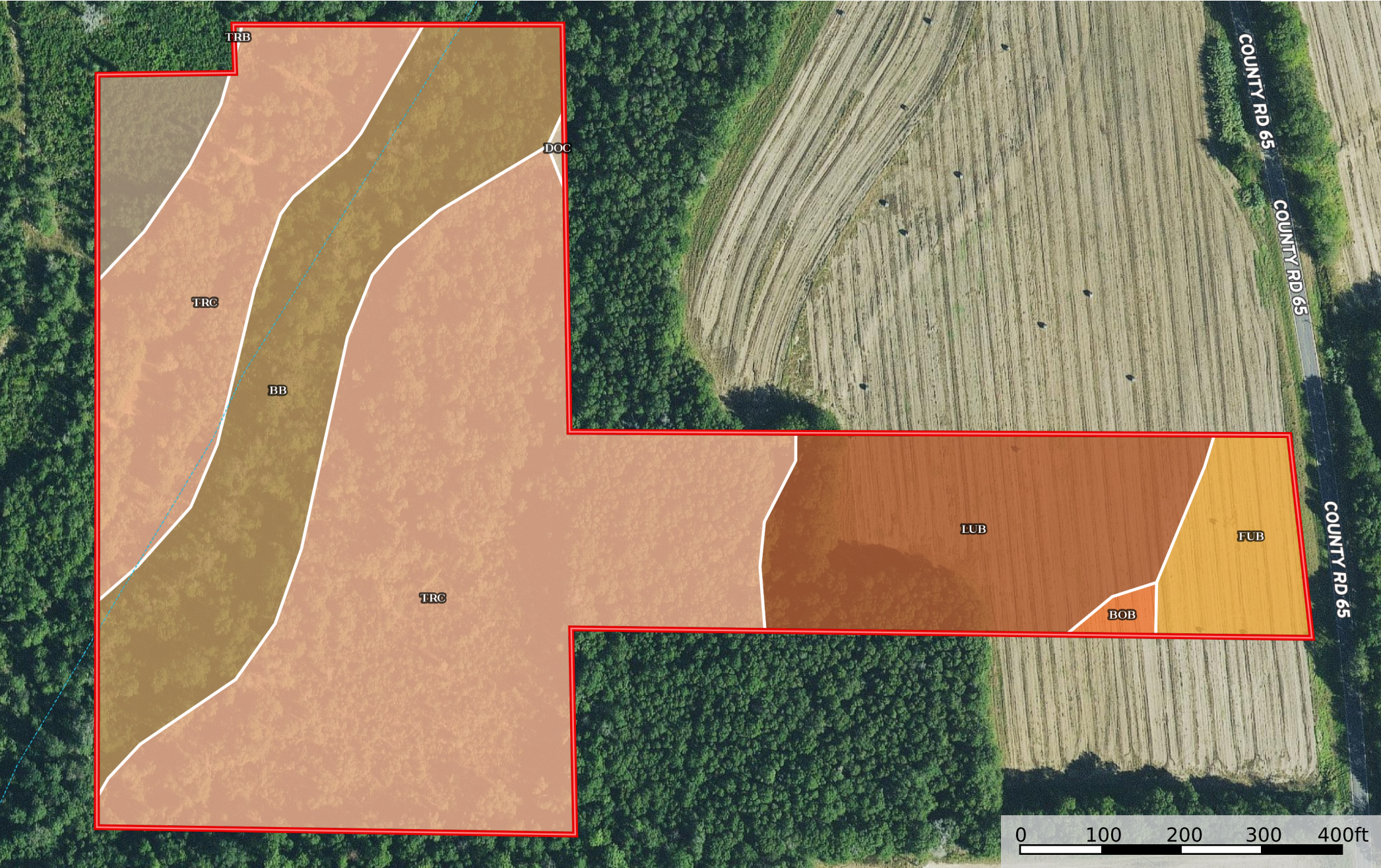


Mansfield Monty parcel A  
Alabama, AC +/-



- Boundary
- Stream, Intermittent
- River/Creek
- Water Body



## Boundary 18.26 ac

SOIL CODE	SOIL DESCRIPTION	ACRES	%	CPI	NCCPI	CAP
TrC	Troup loamy sand, 5 to 12 percent slopes	10.41	57.01	0	49	4s
Bb	Bibb and Osier soils, frequently flooded	3.53	19.33	0	49	5w
LuB	Lucy loamy sand, 0 to 5 percent slopes	2.75	15.06	0	51	2s
FuB	Fuquay loamy sand, 1 to 5 percent slopes	0.87	4.76	0	44	2s
TrB	Troup loamy sand, 0 to 5 percent slopes	0.58	3.18	0	47	3s
BoB	Bonifay loamy sand, 0 to 5 percent slopes	0.1	0.55	0	41	3s
DoC	Dothan sandy loam, 5 to 8 percent slopes	0.02	0.11	0	73	3e
TOTALS		18.26(*)	100%	-	48.98	3.76









(\*) Total acres may differ in the second decimal compared to the sum of each acreage soil. This is due to a round error because we only show the acres of each soil with two decimal.

### Capability Legend

Increased Limitations and Hazards

Decreased Adaptability and Freedom of Choice Users

Land, Capability

								
	1	2	3	4	5	6	7	8
'Wild Life'	•	•	•	•	•	•	•	•
Forestry	•	•	•	•	•	•	•	
Limited	•	•	•	•	•	•	•	
Moderate	•	•	•	•	•	•		
Intense	•	•	•	•	•			
Limited	•	•	•	•				
Moderate	•	•	•					
Intense	•	•						
Very Intense	•							

### Grazing Cultivation

(c) climatic limitations (e) susceptibility to erosion

(s) soil limitations within the rooting zone (w) excess of water