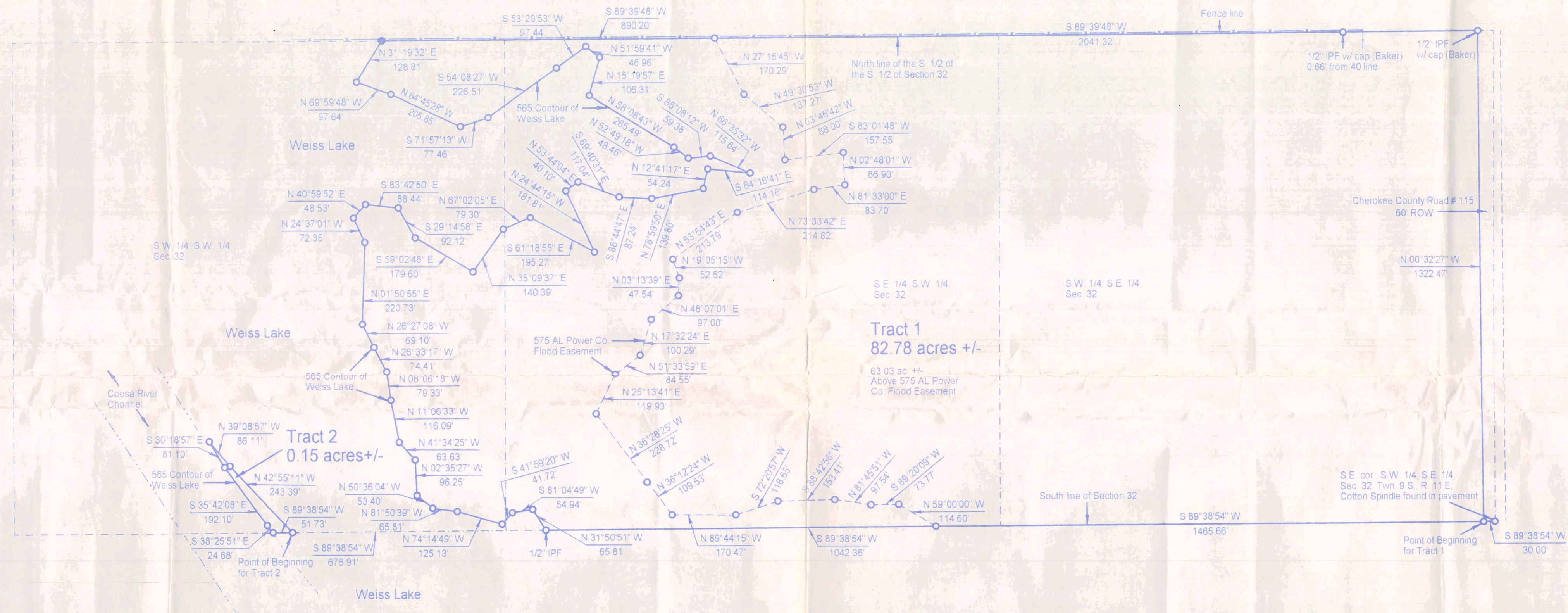


A Plat of a Boundary Survey of the J.L. and Mattie Lou Roe Estate

Lying in the South half of the South half of Section 32,
Township 9 South, Range 11 East; Cherokee County, AL.
Deeds used - A 226 pgs. 28 - 33

Bearings Shown Hereon are
Computed From Angles Turned
And Are Referenced to
Astronomic North
IPS = 1/2" Iron Re-Bar With Cap
Set Bearing #22088 = ●
○ = No Monument Found or Set
Unless Otherwise Noted
IPF = Iron Re-Bar Found
R.O.W. = Right-Of-Way



Tract 1
Commencing at a cotton spindle found in center of Cherokee County Road # 115 marking the Southeast corner of the Southwest Quarter of the Southeast Quarter of Section 32, Township 9 South, Range 11 East, thence S 89°38'54" W with and along the South line of said Section 32, a distance of 30.00 feet to the western boundary line of said County Road # 115 marking the POINT OF BEGINNING, thence continuing with and along the South line of said Section 32 the following bearings and distances: S 89°38'54" W, a distance of 1465.66 feet to the 575 Alabama Power Company Flood Easement; thence continuing along said South line S 89°38'54" W along said line, a distance of 1042.36 feet to a 1/2" re-bar found on the 565 contour of Weiss Lake; thence leaving the South line of Section 32, with and along said 565 contour the following bearings and distances: N 31°50'51" W, a distance of 65.81 feet; thence S 81°04'49" W, a distance of 54.94 feet; thence S 41°59'20" W, a distance of 41.72 feet; thence N 74°14'49" W, a distance of 125.13 feet; thence N 81°50'39" W, a distance of 65.81 feet; thence N 50°36'04" W, a distance of 53.40 feet; thence N 02°35'27" W, a distance of 96.25 feet; thence N 41°34'25" W, a distance of 63.63 feet; thence N 11°06'33" W, a distance of 116.09 feet; thence N 08°06'18" W, a distance of 79.33 feet; thence N 26°33'17" W, a distance of 74.41 feet; thence N 26°27'08" W, a distance of 69.10 feet; thence N 01°50'55" E, a distance of 220.73 feet; thence N 24°37'01" W, a distance of 72.35 feet; thence N 40°59'52" E, a distance of 48.53 feet; thence S 83°42'50" E, a distance of 88.44 feet; thence S 29°14'58" E, a distance of 92.12 feet; thence S 59°02'48" E, a distance of 179.60 feet; thence N 35°09'37" E, a distance of 140.39 feet; thence N 67°02'05" E, a distance of 79.30 feet; thence S 61°18'55" E, a distance of 195.27 feet; thence N 24°44'15" W, a distance of 181.81 feet; thence N 53°29'53" W, a distance of 97.44 feet; thence S 54°08'27" W, a distance of 226.51 feet; thence S 71°57'13" W, a distance of 77.46 feet; thence N 64°45'28" W, a distance of 205.85 feet; thence N 69°59'48" W, a distance of 97.64 feet; thence N 31°19'32" E, a distance of 128.81 feet; thence S 53°29'53" W, a distance of 97.44 feet; thence S 89°39'48" W, a distance of 890.20 feet to the North line of the S. 1/2 of the S. 1/2 of Section 32, thence continuing along said North line S 89°39'48" W, a distance of 2041.32 feet to the 1/2" IPF w/ cap (Baker) found on the western boundary line of Cherokee County Road # 115; thence S 00°32'27" E with and along said western boundary line, a distance of 1322.47 feet to the POINT OF BEGINNING, said described tract containing 82.78 Acres, more or less.

Tract 2
Commencing at a cotton spindle found marking the Southeast corner of the Southwest Quarter of the Southeast Quarter of Section 32, Township 9 South, Range 11 East, thence with and along the South line of said Section 32 the following bearings and distances: S 89°38'54" W, a distance of 30.00 feet to the western boundary line of Cherokee County Road # 115; thence continuing along said South line S 89°38'54" W, a distance of 1465.66 feet to the 575 Alabama Power Company Flood Easement; thence continuing S 89°38'54" W along said line, a distance of 1042.36 feet to a 1/2" re-bar found on the 565 contour of Weiss Lake; thence continuing S 89°38'54" W, a distance of 676.91 feet to the 565 contour of Weiss Lake marking the POINT OF BEGINNING, thence continuing along said South line S 89°38'54" W, a distance of 51.73 feet to the 565 contour of Weiss Lake; thence leaving said South line, with and along the 565 contour of Weiss Lake the following bearings and distances: N 38°25'51" W, a distance of 24.68 feet; thence N 35°42'08" W, a distance of 192.10 feet; thence N 30°18'57" W, a distance of 81.10 feet; thence S 39°08'57" E, a distance of 86.11 feet; thence S 35°42'08" E, a distance of 243.39 feet; thence S 35°42'08" E, a distance of 192.10 feet; thence S 89°38'54" W, a distance of 51.73 feet; thence S 89°38'54" W, a distance of 676.91 feet to the POINT OF BEGINNING, said described tract containing 0.15 Acres, more or less.

NOTE:
1. No title or abstract research was performed by the undersigned for this survey.
2. Warning: This plat of survey makes no warranty or guarantee as to the existence of any easements of any type.
3. Only acts of possession, if any, that are visible from casual inspection of the property are shown hereon. No warranty or guarantee is implied as to the existence of acts of possession by adjoining owners to the lands shown and described hereon.
4. The property lines shown on the survey plat are based upon old established corners and agreed corners between adjoining land owners and may or may not be the lines of the aliquot parts of the Section and carry no warranty that they are the lines of the aliquot parts of the Section.

"I hereby state that all parts of this survey and drawing have been completed in accordance with the current requirements of the Standards of Practice for Surveying in the State of Alabama to the best of my knowledge, information, and belief."

J. David Chesnut, Jr.
J. David Chesnut, Jr. AL Lic #22088

Southern Appalachian Land Surveying
P.O. Box 36 Gaylesville, AL 35973
256-422-3060 Fax 256-422-3241
Work Completed
Field 9/23/05 Plat 9/23/05
File AL0905#101-38-2-3

