

FOR SALE

450 Cross Anchor Road Enoree, SC 29335



\$549,999



Frontier Farms Estates West

Land | ±43 Acres

- A Portion of Spartanburg County Tax Map #4-50-00-058.02
- Road Frontage: Cross Anchor Road | Hwy 146; Amounts vary per estate lot.
- Estate Lot for Private Residence
- Zoned for Award Winning Spartanburg County Schools in District 4
- Water and Power Available
- Flat Pastureland / Level Topography / Mature Timber
- Additional Acreage Available
- * Acreage and Utilities to be verified by Buyer or Buyer's Agent



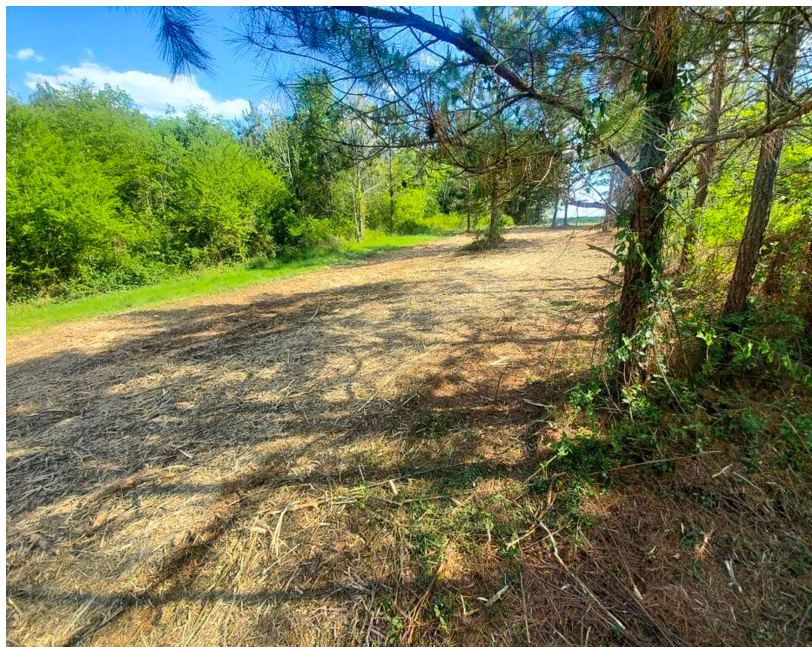
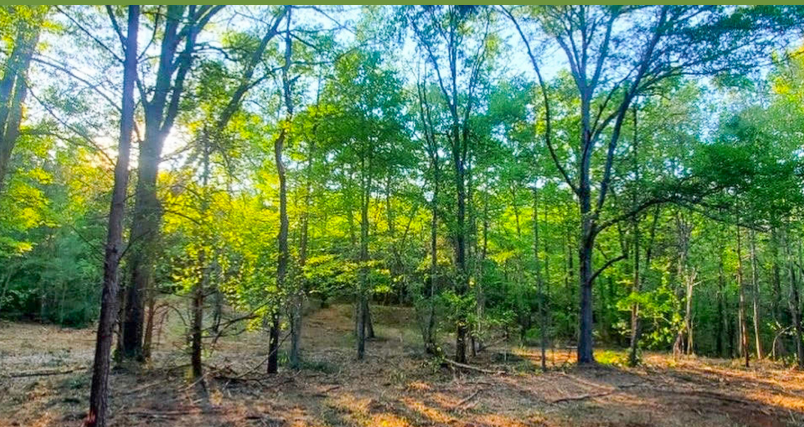
✉ Charlie Pruette
+1 864 275 7876
cpruette@naiearlefurman.com

No Warranty Or Representation, Express Or Implied, Is Made As To The Accuracy Of The Information Contained Herein. And The Same Is Submitted Subject To Errors, Omissions, Change Of Price, Rental Or Other Conditions, Prior Sale, Lease Or Financing, Or Withdrawal Without Notice, And Of Any Special Listing Conditions Imposed By Our Principals No Warranties Or Representations Are Made As To The Condition Of The Property Or Any Hazards Contained Therein Are Any To Be Implied.

📍 101 E Washington St
Greenville, SC 29601
naiearlefurman.com

FOR SALE

±43 Acres in Spartanburg County



Charlie Pruette
+1 864 275 7876
cpruette@naiearlefurman.com

No Warranty Or Representation, Express Or Implied, Is Made As To The Accuracy Of The Information Contained Herein, And The Same Is Submitted Subject To Errors, Omissions, Change Of Price, Rental Or Other Conditions, Prior Sale, Lease Or Financing, Or Withdrawal Without Notice, And Of Any Special Listing Conditions Imposed By Our Principals No Warranties Or Representations Are Made As To The Condition Of The Property Or Any Hazards Contained Therein Are Any To Be Implied.



101 E Washington St
Greenville, SC 29601
naiearlefurman.com



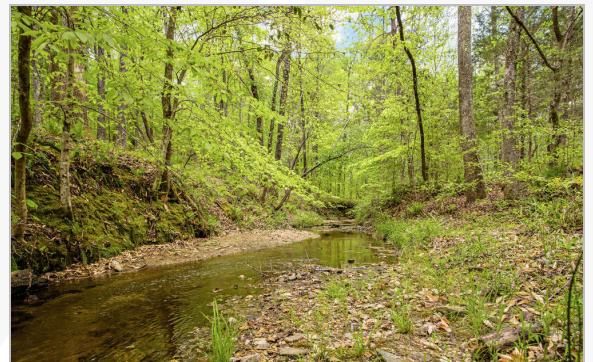
Frontier Farms Estates West

450 Cross Anchor Road
Enoree, South Carolina 29335

Property Description

Frontier Farm Estates West provides a unique opportunity for homeowners to enjoy the peace and solitude of a ±43 acre estate lot. Originally part of a 300± acre generational farmland comprised primarily of well-established pasture, level topography, and flowing creeks. Frontier Farms Estates West is perfect for those individuals seeking the relaxed rural lifestyle with easy commutes to both Greenville & Spartanburg. Just a short drive into charming downtown Woodruff for all your daily needs. The property grants a future homeowner easy access to modern day necessities without compromising a quiet setting outside the city.

Local Produce providers, owner operated organic farms, & several traditional country churches are little pieces of what makes Frontier Farm Estates a part of a truly thriving rural community. Come see Frontier Farm Estates West to experience some of the best rural living that Upstate South Carolina has to offer.



DEMOGRAPHICS

Stats	Population	Avg. HH Income
2.5 Miles	1,332	\$44,945
5 Miles	5,743	\$47,194
7.5 Miles	13,771	\$52,032

For more information

Charlie Pruette

O: 864 275 7876

cpruette@naiearlefurman.com

[VIEW PROPERTY VIDEO](#)

