

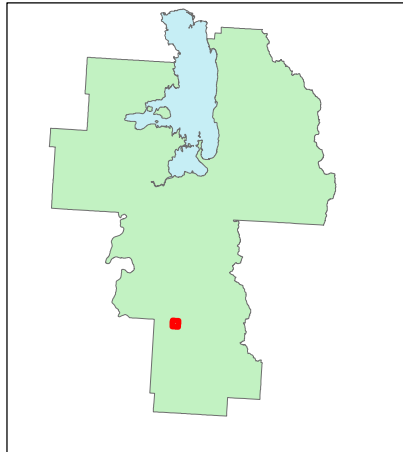
This map is provided solely for the purpose of assisting in locating the Land, and the Company assumes no liability for variations, if any, with actual survey.



SUBJECT

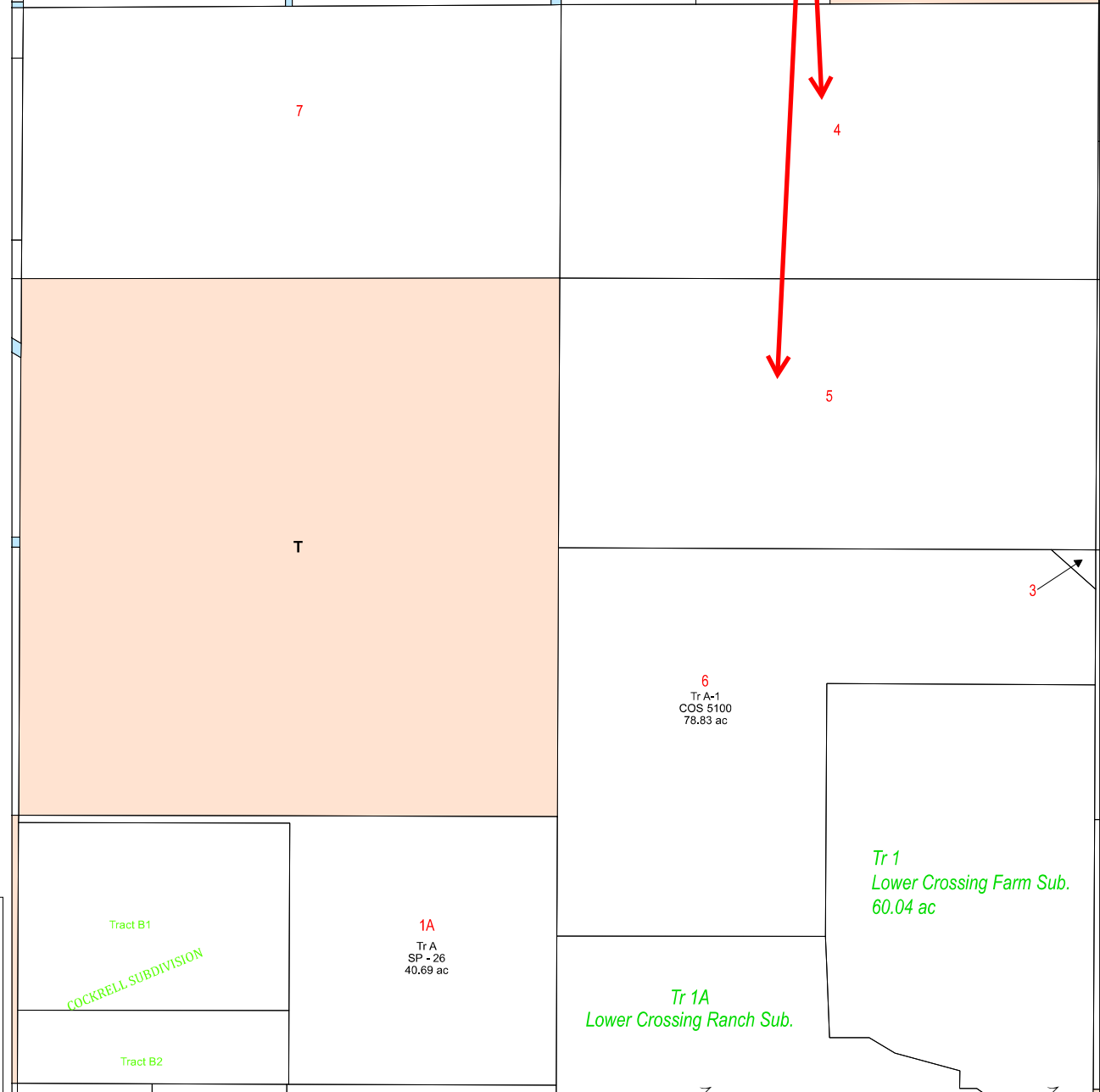
T18N, R20W, Sec 3

Lake County Section Map



Legend

- Private
- Plum Creek
- Utilities
- Federal
- State
- Local Govn
- Tribal
- Water



DISCLAIMER: The data displayed on this map do not constitute a legal survey. Inaccuracies exist with both the mapped parcel data and the CAMA data. When seeking the definitive description of real property, consult the deed recorded at the local county courthouse.

Sources: The parcel data was primarily developed by the Montana Cadastral Database Project. It comes from a variety of sources including automated collection of aliquot part legal descriptions, digitization of existing paper or Mylar maps, and coordinate geometry capture of certificates of survey and deeds. For more information see the FGDC compliant metadata on the web (gis.doa.state.mt.us/). Road, hydro and rail data is from the U.S. Census Bureau 1:100,000 TIGER files unless otherwise noted. County boundary, if displayed on the map, is the outer boundary of the parcels within a county and is based on the Bureau of Land Management's GCDB files where coincident with a parcel boundary or on the TIGER files where not coincident.

