

150 Acres For Sale

Catfish Cove Road Tract Waterloo, SC 29384



\$649,500



Catfish Cove Road Tract

Property Features

- Laurens County TM#s 177-00-00-035 & 177-00-00-036
- Asking Price: \$4,330/acre
- 1,600' of frontage on Catfish Cove Road with excellent access leading to a potential home/cabin site in a well maintained 1+acre field
- 6 food plots with several producing persimmon trees
- A nice balance of hardwoods and merchantable loblolly pine
- Beautiful +25 acre mature upland hardwood ridge with a substantial number of large white oaks
- A creek bottom runs through the interior of the property for +2/3 of a mile
- A quality internal road system provides access to a majority of the property
- Excellent deer and turkey habitat
- Located less than 1/4 of a mile from Lake Greenwood



✉ Rusty Hamrick
+1 864 232 9040
rhamrick@naiearlefurman.com

No Warranty Or Representation, Express Or Implied, Is Made As To The Accuracy Of The Information Contained Herein, And The Same Is Submitted Subject To Errors, Omissions, Change Of Price, Rental Or Other Conditions, Prior Sale, Lease Or Financing, Or Withdrawal Without Notice, And Of Any Special Listing Conditions Imposed By Our Principals No Warranties Or Representations Are Made As To The Condition Of The Property Or Any Hazards Contained Therein Are Any To Be Implied.

📍 101 E Washington St
Greenville, SC 29601
naiearlefurman.com

PROPERTY PHOTOS

Catfish Cove Road Tract Waterloo, SC 29384



Rusty Hamrick
+1 864 232 9040
rhamrick@naiearlefurman.com

No Warranty Or Representation, Express Or Implied, Is Made As To The Accuracy Of The Information Contained Herein, And The Same Is Submitted Subject To Errors, Omissions, Change Of Price, Rental Or Other Conditions, Prior Sale, Lease Or Financing, Or Withdrawal Without Notice, And Of Any Special Listing Conditions Imposed By Our Principals No Warranties Or Rep- resentations Are Made As To The Condition Of The Property Or Any Hazards Contained Therein Are Any To Be Implied.



101 E Washington St
Greenville, SC 29601
naiearlefurman.com

MAP SET

Catfish Cove Road Tract Waterloo, SC 29384



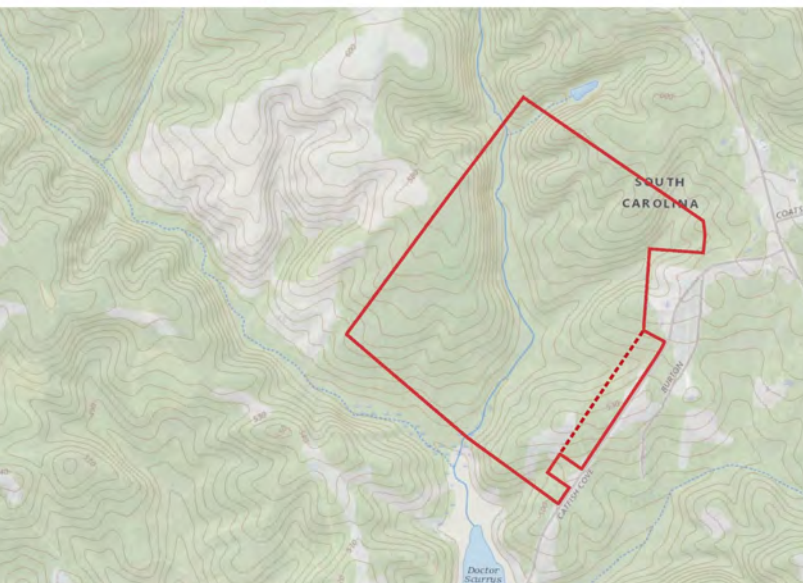
Aerial



2006 Infrared



Topographical Map



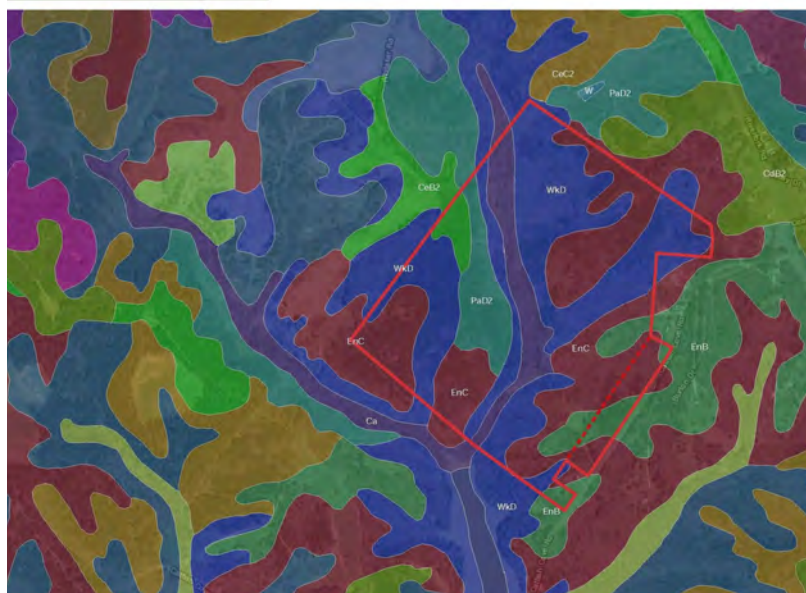
FEMA Flood Zones



National Wetlands Inv.



Soil Survey



✉ Rusty Hamrick
+1 864 232 9040
rhamrick@naiearlefurman.com

No Warranty Or Representation, Express Or Implied, Is Made As To The Accuracy Of The Information Contained Herein, And The Same Is Submitted Subject To Errors, Omissions, Change Of Price, Rental Or Other Conditions, Prior Sale, Lease Or Financing, Or Withdrawal Without Notice, And Of Any Special Listing Conditions Imposed By Our Principals No Warranties Or Rep- resentations Are Made As To The Condition Of The Property Or Any Hazards Contained Therein Are Any To Be Implied.

📍 101 E Washington St
Greenville, SC 29601
naiearlefurman.com