

# Lorraine Township Farm



looking northwest, 8.9.22



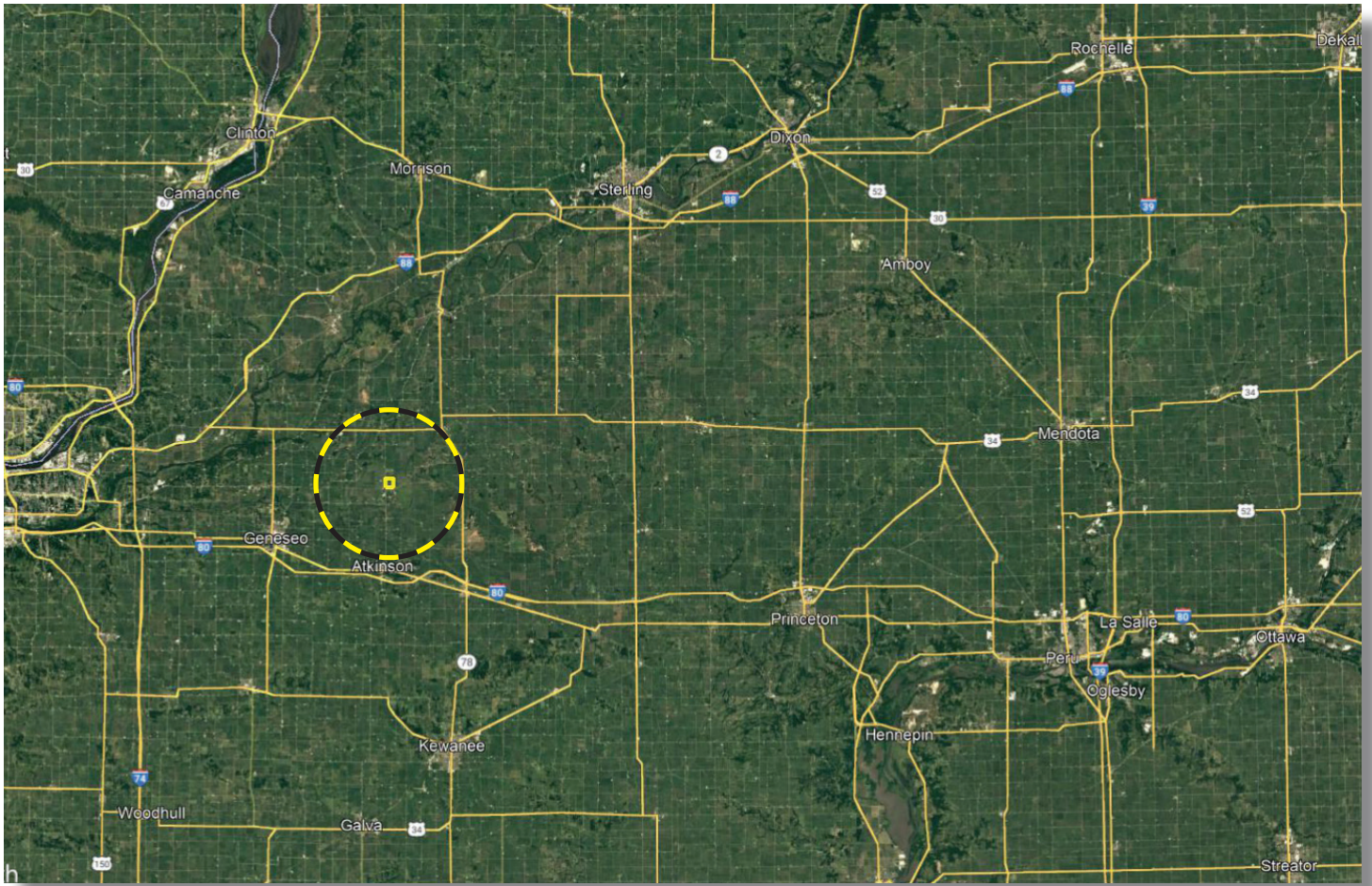
Leslie H. "Chip" Johnston  
Licensed IL Real Estate Managing Broker  
**Land Pro LLC**  
815.866.6161c | farms1@comcast.net  
2681 US Hwy 34 | Oswego IL 60543  
331.999.3490 | www.landprollc.us

August 15, 2022



# Loraine Township Farm

200.05± tax acres (193.53± tillable) | Section 35 | Loraine Township | T.18N.-R.4E. | Henry County Illinois



**Leslie H. "Chip" Johnston | Licensed IL Real Estate Managing Broker**  
Land Pro LLC | 815.866.6161 | farms1@comcast.net

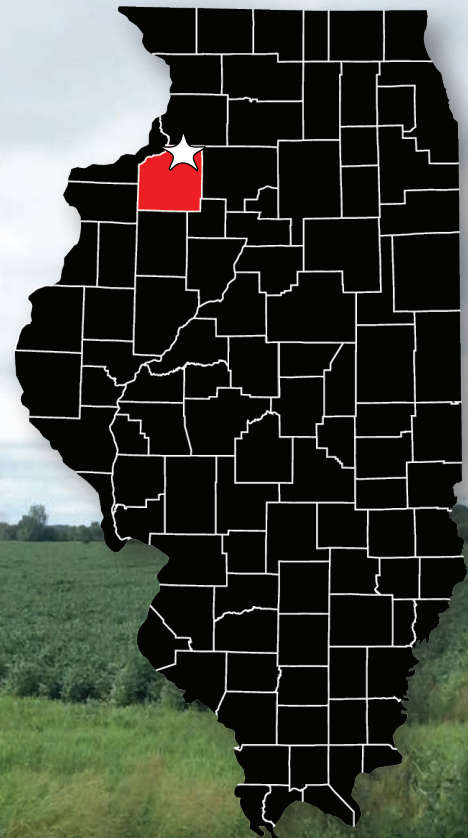


This information is from sources Land Pro deems reliable, but is not guaranteed. Duplication, copying or distribution, in whole or part, is expressly prohibited without written authorization. Boundaries and acreages are approximate.

This 200 acre contiguous farm, north of Atkinson Illinois, is located in a drainage district. It is a flat farm that also has some surface drainage ditches running through it. Included is a 25,000± bushel grain bin with dryer. Nicely priced for a contiguous farm of this size.

acreage	-	200.05± tax acres (193.53± tillable acres)
description	-	part of the W½ of Section 35, Loraine Township, T.18N.,-R.4E., Henry County Illinois
soils	-	Productivity Index - 93.8 (predominantly Booker, Aholt, Montgomery)
price	-	\$1,640,410.00 (\$8,200 per acre)
taxes (2021)	-	\$4,122.62 (\$20.60/ac)
PIN	-	04.35.300.002
drainage	-	Green River Special Drainage District
buildings	-	25,000± bushel grain bin with dryer
frontage	-	Atkinson Road

FSA Information Farm 1466   Tract 460		
Commodity	Base Acres	County Yield
Corn (PLC)	188.20	125
Soybeans (ARC-CO)	5.3	39



6.0± mi N of Atkinson IL  
 31.6± mi E of Moline IL  
 87.4± mi SW of Rockford IL  
 112.0± mi NW of Bloomington IL  
 138.0± mi NW of Springfield IL  
 144.0± mi SW of Chicago IL  
 GPS 41.498967, -90.010686  
 (points are to center of the city)

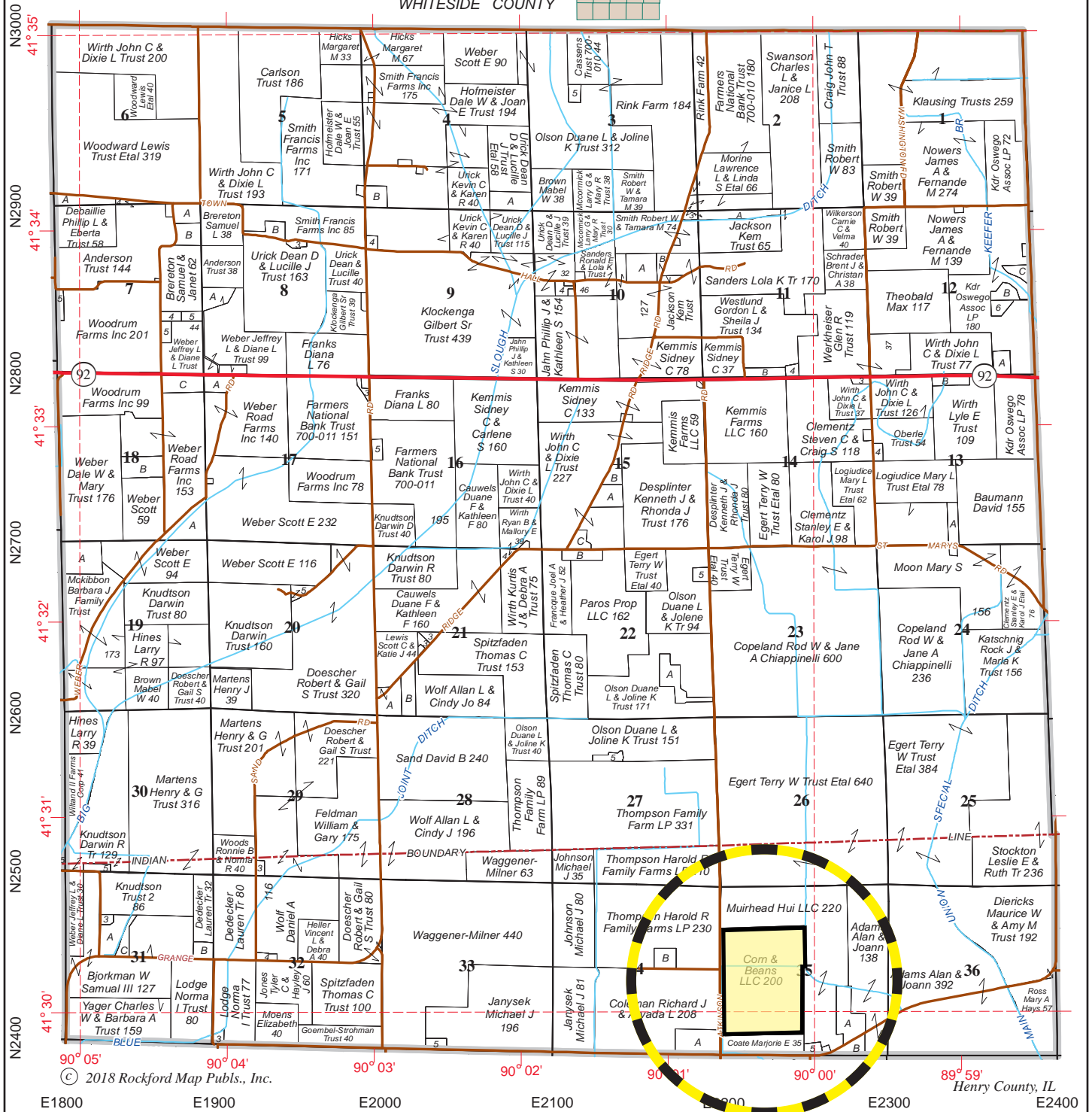
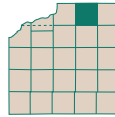
looking northeast, 8.9.22



# LORAIN

# T.18N.-R.4E.

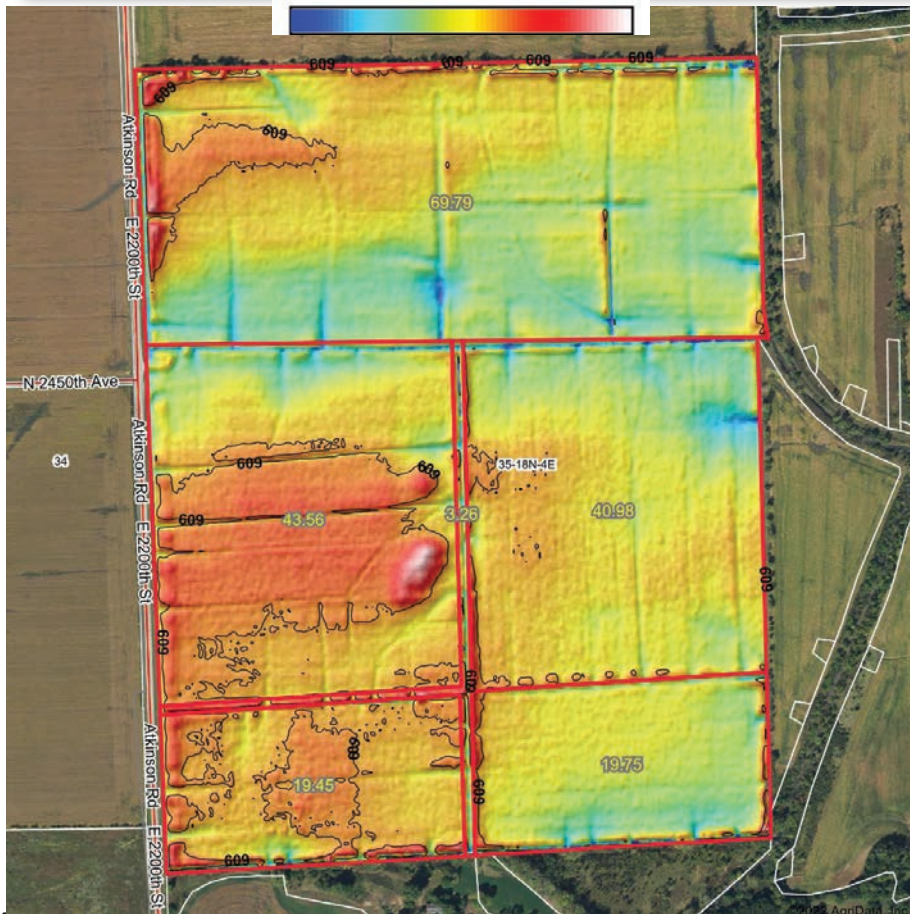
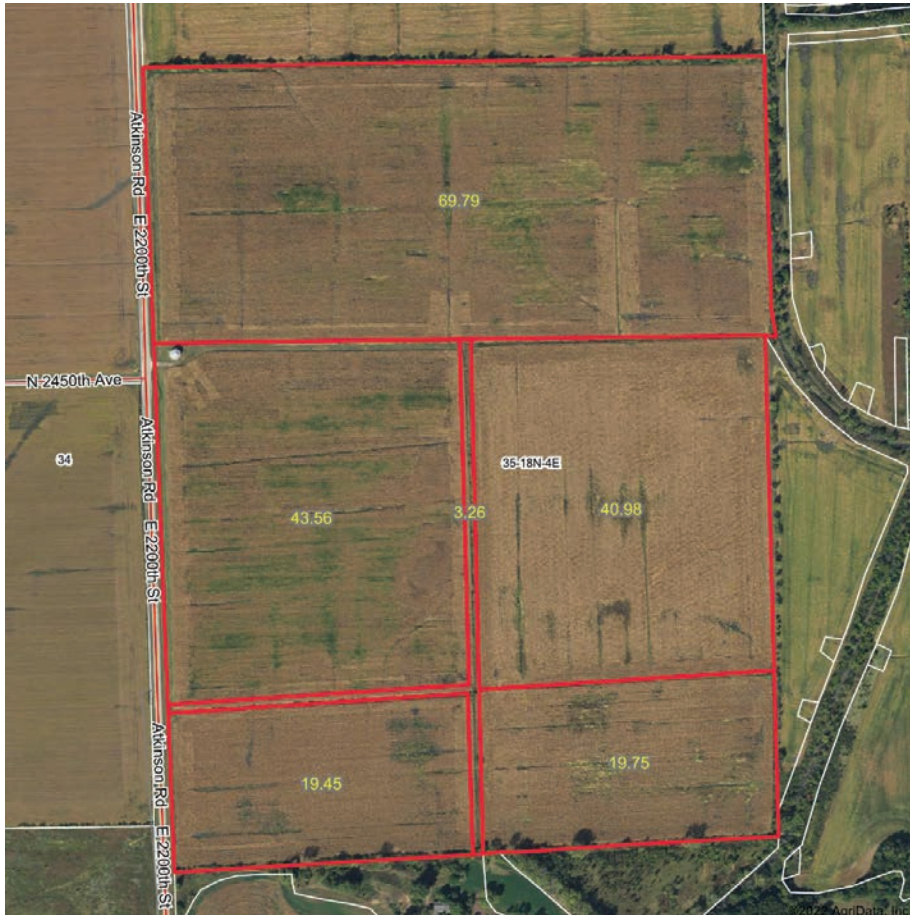
WHITESIDE COUNTY

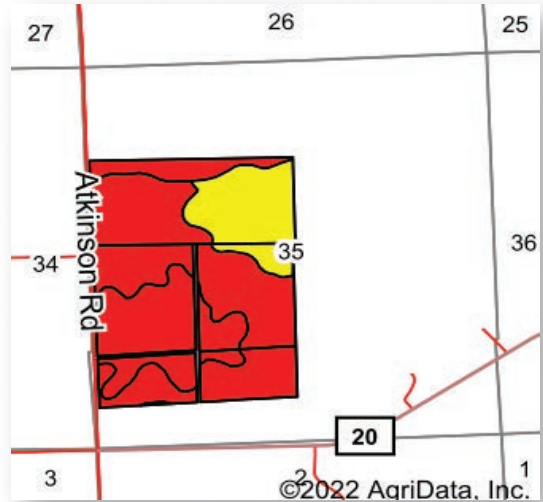
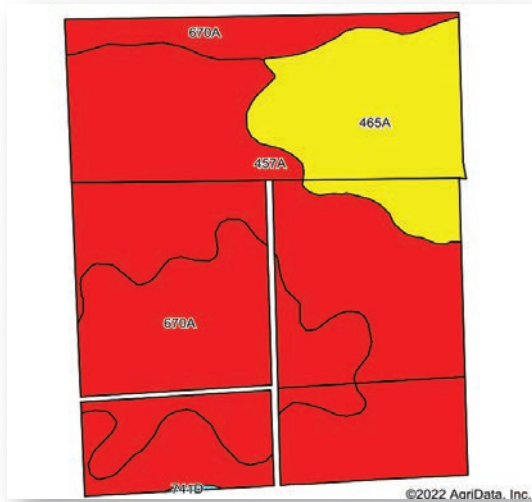


© 2018 Rockford Map Pubs., Inc.



8.15.22





Area Symbol: IL073, Soil Area Version: 18

Code	Soil Description	Acres	Percent of field	Il. State Productivity Index Legend	Subsoil rooting <sup>a</sup>	Corn Bu/A	Soybeans Bu/A	Wheat Bu/A	Alfalfa <sup>d</sup> hay, T/A	Grass-legume <sup>e</sup> hay, T/A	Crop productivity index for optimum management
457A	Booker silty clay, 0 to 2 percent slopes	99.84	51.6%		FAV	116	41	44	0.00	3.89	89
670A	Aholt silty clay, 0 to 2 percent slopes	57.70	29.8%		FAV	123	41	46	0.00	3.89	92
465A	Montgomery silty clay, 0 to 2 percent slopes	35.78	18.5%		FAV	148	49	58	0.00	4.52	110
**741D	Oakville fine sand, 7 to 15 percent slopes	0.21	0.1%		FAV	**100	**35	**44	0.00	**3.39	**76
<b>Weighted Average</b>						<b>124</b>	<b>42.5</b>	<b>47.2</b>	<b>0.00</b>	<b>4.01</b>	<b>93.8</b>

**Table: Optimum Crop Productivity Ratings for Illinois Soil by K.R. Olson and J.M. Lang, Office of Research, ACES, University of Illinois at Champaign-Urbana.** Version: 1/2/2012 Amended Table S2 B811  
 Crop yields and productivity indices for optimum management (B811) are maintained at the following NRES web site: <http://soilproductivity.nres.illinois.edu/>  
 \*\* Indexes adjusted for slope and erosion according to Bulletin 811 Table S3  
<sup>a</sup> UNF = unfavorable; FAV = favorable  
<sup>d</sup> Soils in the poorly drained group were not rated for alfalfa and are shown with a zero "0".  
<sup>e</sup> Soils in the well drained group were not rated for grass-legume and are shown with a zero "0".  
 Soils data provided by USDA and NRCS. Soils data provided by University of Illinois at Champaign-Urbana.



looking southeast, 8.9.22



Henry County, Illinois

W=Wheat,SWR,GR C=Corn,Yel,GR 2022 Producer Shares: \_\_\_\_\_  
 SB,S,B=Soybeans,Com,GR Hay=MixFG,LGM,FG \_\_\_\_\_  
 Alf=Alfalfa,FG WW=MixFG,LGM,LS \_\_\_\_\_  
 Pasture,Past=MixFG,LGM,GZ \*Non-Irrigated unless noted on the map

**Farm 1466**  
**Tract 460**  
 2022 Program Year



CLU	Acres	HEL	Crop
1	69.79	NHEL	
2	43.56	NHEL	
3	40.98	NHEL	
4	19.45	NHEL	
5	19.75	NHEL	
6	3.26	UHFL	NC

Page Cropland Total: 193.53 acres

Map Created December 03, 2021

**Common Land Unit**  
 Cropland  
 Non-Cropland  
 Tract Boundary  
 plss\_a\_il\_WMAS

**Wetland Determination Identifiers**  
 Restricted Use  
 Limited Restrictions  
 Exempt from Conservation  
 Compliance Provisions

USDA FSA maps are for FSA Program administration only. This map does not represent a legal survey or reflect actual ownership; rather it depicts the information provided directly from the producer and/or the NAIP imagery. The producer accepts the data 'as is' and assumes all risks associated with its use. The USDA Farm Service Agency assumes no responsibility for actual or consequential damage incurred as a result of any user's reliance on this data outside FSA Programs. Wetland identifiers do not represent the size, shape, or specific determination of the area. Refer to your original determination (CPA-026 and attached maps) for exact boundaries and determinations or contact NRCS.



grain storage bin, 8.9.22