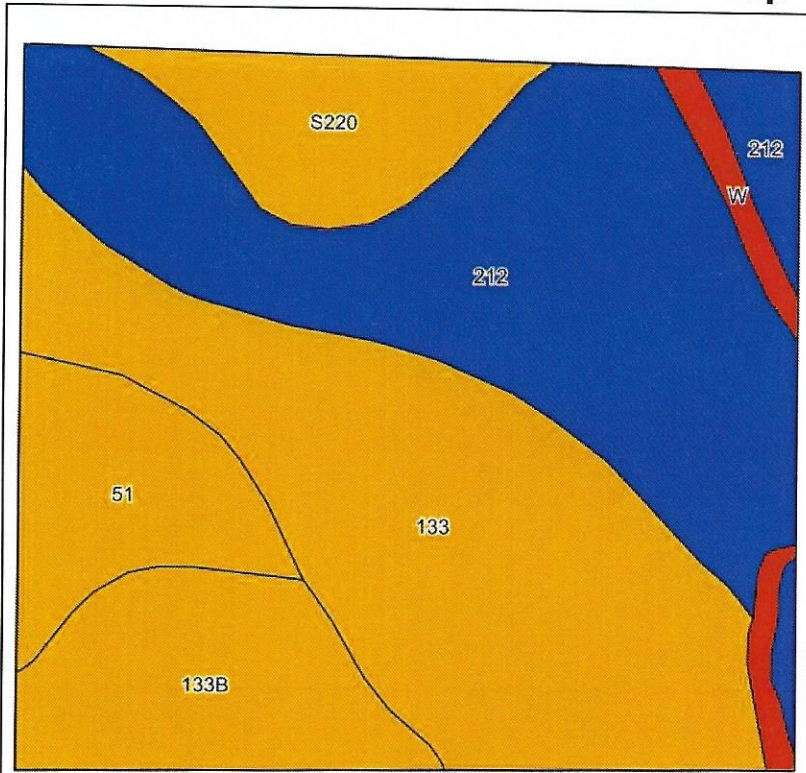
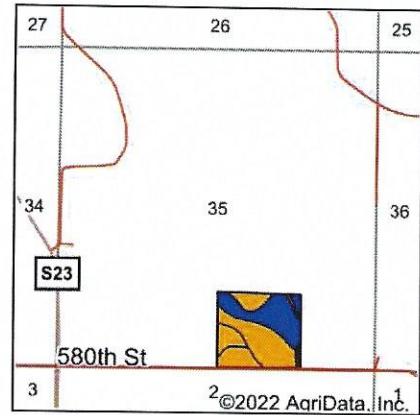


Soils Map



©2022 AgriData, Inc.

Soils data provided by USDA and NRCS.



State: **Iowa**
 County: **Warren**
 Location: **35-74N-22W**
 Township: **White Breast**
 Acres: **40**
 Date: **7/26/2022**

Maps Provided By:



Area Symbol: IA181, Soil Area Version: 26

Code	Soil Description	Acres	Percent of field	CSR2 Legend	Non-Irr Class *c	CSR2**	CSR	*n NCCPI Soybeans
212	Kennebec silt loam, 0 to 2 percent slopes	14.15	35.4%		Is	88	91	82
133	Colo silty clay loam, deep loess, 0 to 2 percent slopes, occasionally flooded	13.28	33.2%		Ilw	78	80	80
133B	Colo silty clay loam, dissected till plain, 2 to 5 percent slopes, occasionally flooded	4.71	11.8%		Ilw	74	75	82
51	Vesser silt loam, dissected till plain, 0 to 2 percent slopes, occasionally flooded	3.54	8.8%		Ilw	74	70	89
S220	Nodaway silt loam, heavy till, 0 to 2 percent slopes, occasionally flooded	3.31	8.3%		Ilw	77		85
W	Water	1.01	2.5%			0	0	
Weighted Average						*- 78.7	*- 80.1	

**IA has updated the CSR values for each county to CSR2.

*- CSR weighted average cannot be calculated on the current soils data, use prior data version for csr values.

*n: The aggregation method is "Weighted Average using all components"

*c: Using Capabilities Class Dominant Condition Aggregation Method

*- Non Irr Class weighted average cannot be calculated on the current soils data due to missing data.

Soils data provided by USDA and NRCS.