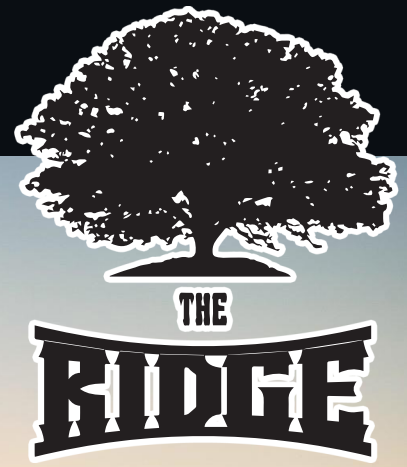


BRAND NEW SUBDIVISION

LA CRESTA LN. – MINERAL WELLS, TX



Barndominiums Allowed

10+ Acre Tracts w/Something For Everyone

Magnificent Views

Amazing Live Oaks

Paved Roads

Private Water Wells

Starting at \$125,000



STEPHEN
REICH GROUP
WILLIAMS TREW REAL ESTATE

Williamstrew[★]

A DIVISION OF EBBY HALLIDAY REAL ESTATE, INC.

LISTED BY **STEPHEN REICH GROUP** OF WILLIAMS TREW REAL ESTATE

PROPERTY SUMMARY

DESCRIPTION

Welcome to one of North Texas finest new subdivisions! The Ridge, named for its 2 incredible ridges that provide breathtaking views in almost every direction. These 10 plus acre, ag exempt ranchettes vary in amenities with something for everyone. From Rolling terrain with magnificent trees, to level ground with great soil, these minimally restricted tracts are perfect for your farm animals or watching the wildlife that is abundant. Most tracts have been left in their natural state and are a blank canvas to become exactly what you have envisioned! Some tracts have nice ponds and some of those are stocked with a variety of fish. Come get your piece of Texas where Texas is still Texas!!!!

LOCATION

CITY Mineral Wells

County Palo Pinto

Schools Mineral Wells ISD

Driving Directions From the Intersection of Hwy 281 and FM 1885, go West on FM 254 for less than 1 mile. The property will be on the North Side of FM 254

HIGHLIGHTS

- BREATHTAKING VIEWS
- 10+ ACRES AVAILABLE
- AG EXEMPT
- BLANK CANVAS
- SOME TRACTS HAVE PONDS
- SOMETHING FOR EVERYONE



LISTING PRESENTED BY:



Williamstrew 
A DIVISION OF EBBY HALLIDAY REAL ESTATE, INC.

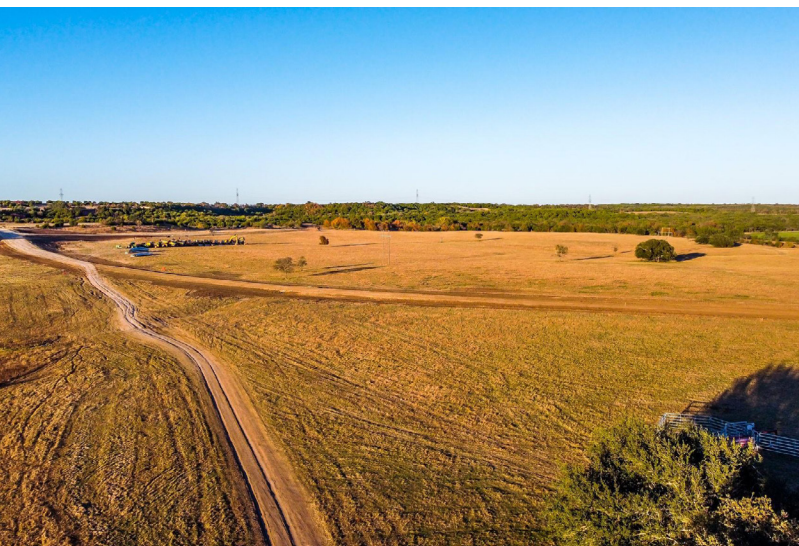
STEPHEN REICH
817-597-8884
stephen.reich@williamstrew.com

PARKER COUNTY OFFICE

400 Shops Boulevard, Ste. 200
Willow Park, TX 76087

FARM & RANCH • RESIDENTIAL • COMMERCIAL-DEVELOPMENT • LAND

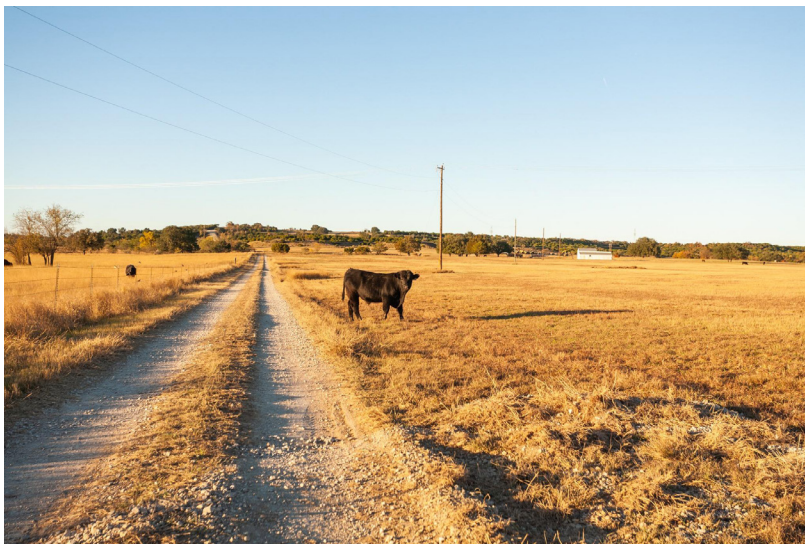
PROPERTY PHOTOS



STEPHEN REICH – 817.597.8884



PROPERTY PHOTOS

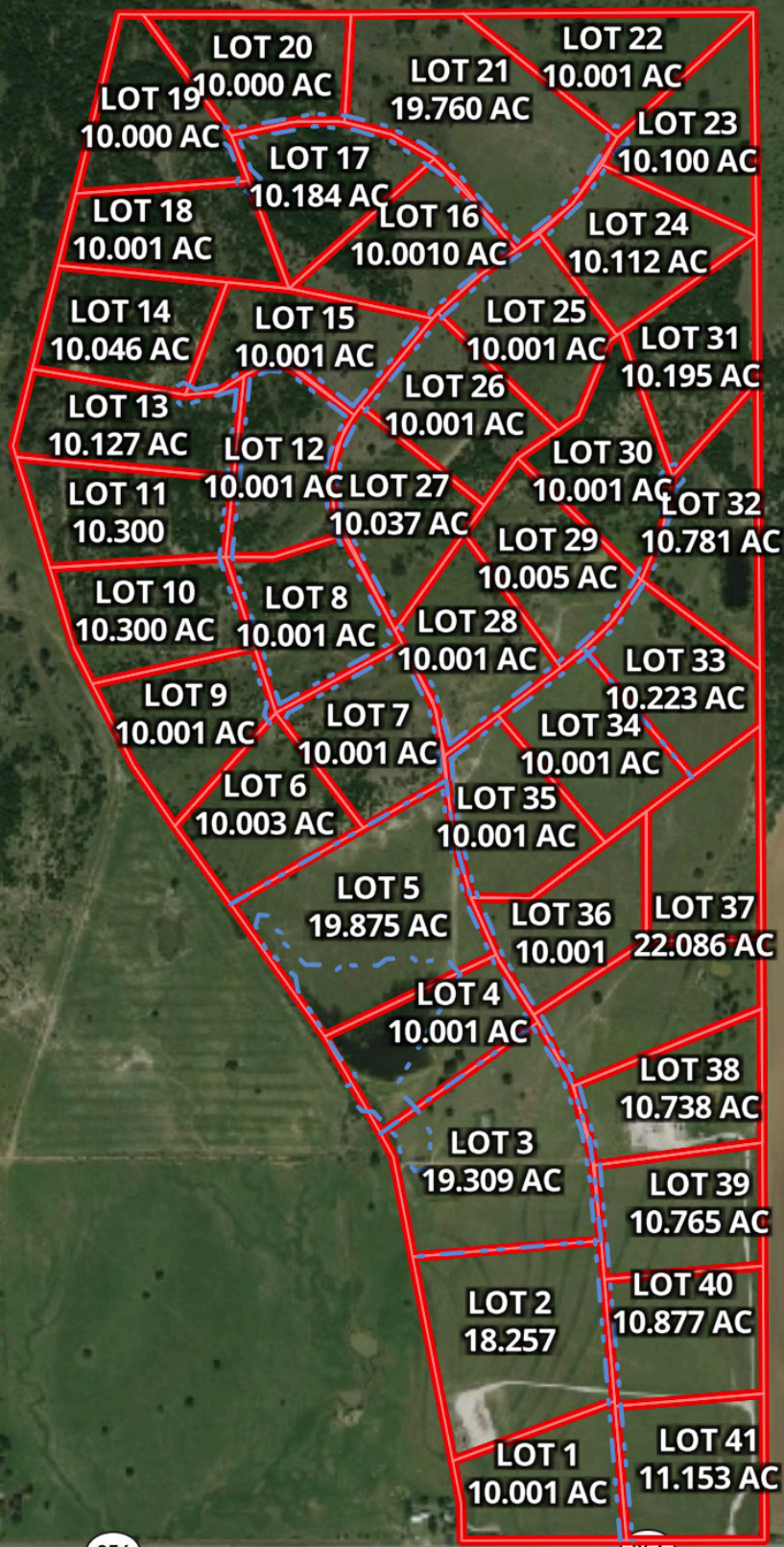


STEPHEN REICH – 817.597.8884



WilliamsTrew 
A DIVISION OF EBBY HALLIDAY REAL ESTATE, INC.

AERIAL



CONTOUR LINES & FLOODPLAIN

