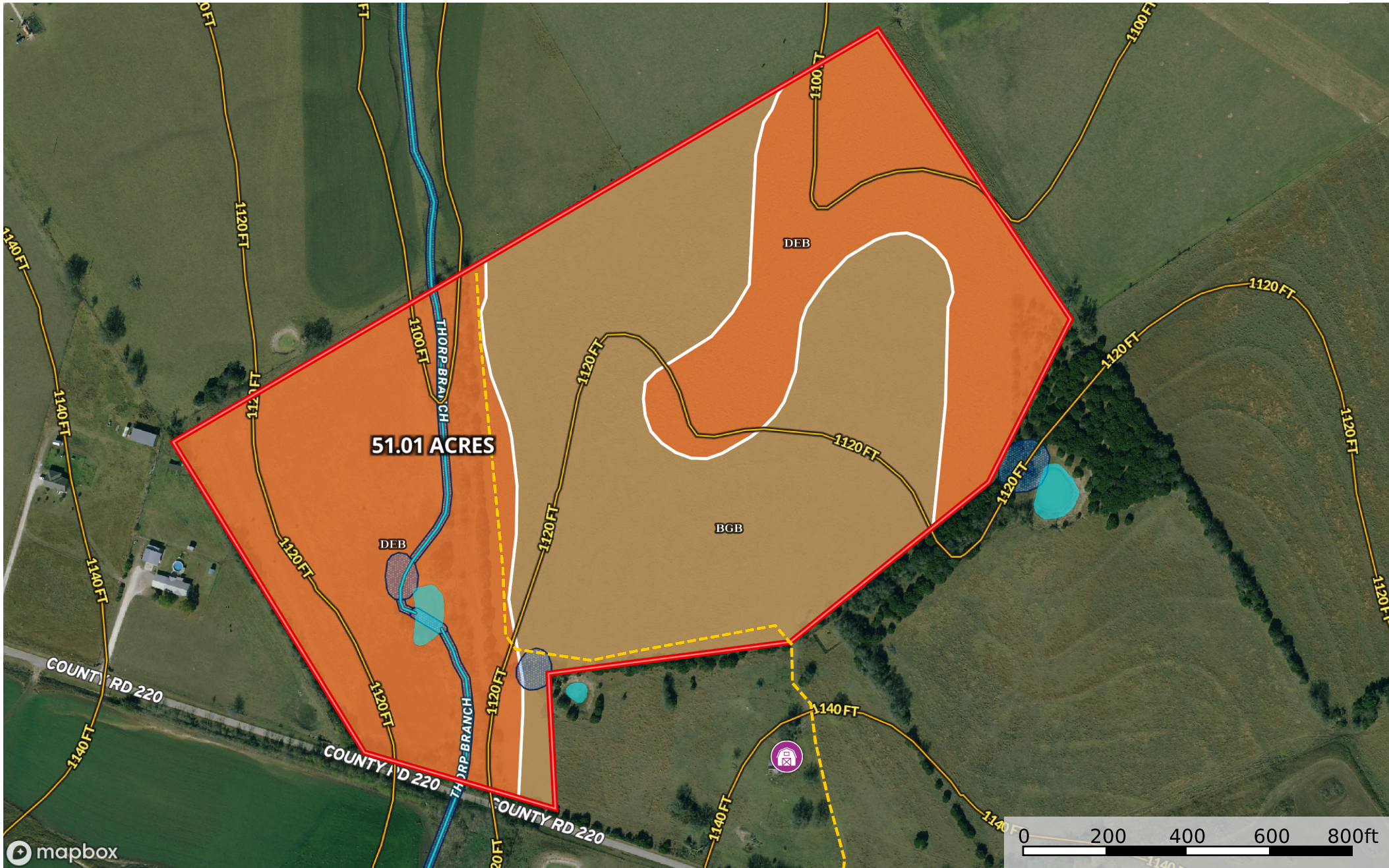


Gartman CR 220 - Tract 1 51.01 Acres  
Coryell County, Texas, 51.01 AC +/-



- Barn
- Gate
- Road / Trail
- Tract 1
- 100 Year Floodplain
- 500 Year Floodplain
- Floodway
- Special
- Unmapped/ Not Included
- Wetlands
- Riparian
- Stream, Intermittent
- River/Creek
- Water Body



SOIL CODE	SOIL DESCRIPTION	ACRES	%	CPI	NCCPI	CAP
DeB	Denton silty clay, 1 to 3 percent slopes	25.77	52.63	0	43	3e
BgB	Bolar gravelly clay loam, 1 to 4 percent slopes	23.18	47.34	0	36	3e
TOTALS		48.96(*)	100%	-	39.68	3.0









(\*) Total acres may differ in the second decimal compared to the sum of each acreage soil. This is due to a round error because we only show the acres of each soil with two decimal.

## Capability Legend

Increased Limitations and Hazards

Decreased Adaptability and Freedom of Choice Users

Land, Capability

								
	1	2	3	4	5	6	7	8
'Wild Life'	•	•	•	•	•	•	•	•
Forestry	•	•	•	•	•	•	•	
Limited	•	•	•	•	•	•	•	
Moderate	•	•	•	•	•	•		
Intense	•	•	•	•	•			
Limited	•	•	•	•				
Moderate	•	•	•					
Intense	•	•						
Very Intense	•							

## Grazing Cultivation

(c) climatic limitations (e) susceptibility to erosion  
 (s) soil limitations within the rooting zone (w) excess of water