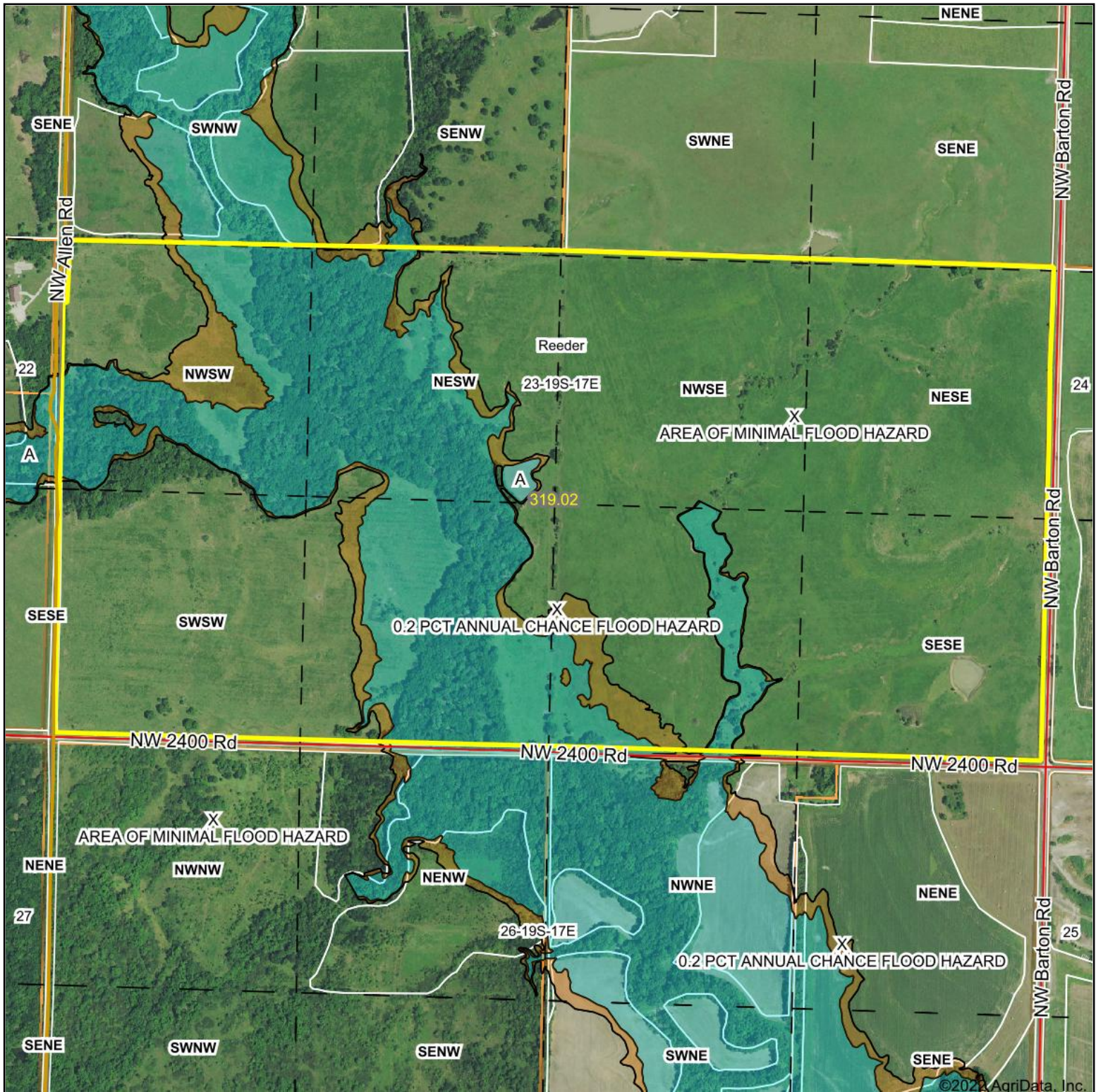


Aerial Map



Map Center: 38° 22' 43.38, -95° 29' 56.91

0ft 830ft 1660ft

23-19S-17E
Anderson County
Kansas



Maps Provided By:
surety
CUSTOMIZED ONLINE MAPPING
© AgriData, Inc. 2021 www.AgriDataInc.com

Field borders provided by Farm Service Agency as of 5/21/2008. Flood related information provided by FEMA