

Brooksville, Florida
1,250 Approved Residential Units
388.5 acre assemblage
Asking Price: \$19,425,000
\$50k/acre or \$15,540/homesite



Zoned June 2022 to PDP (SF)(MF) mix of Single Family, Villas & Townhomes.

40' & 50' Single Family & 70' Villa homesites

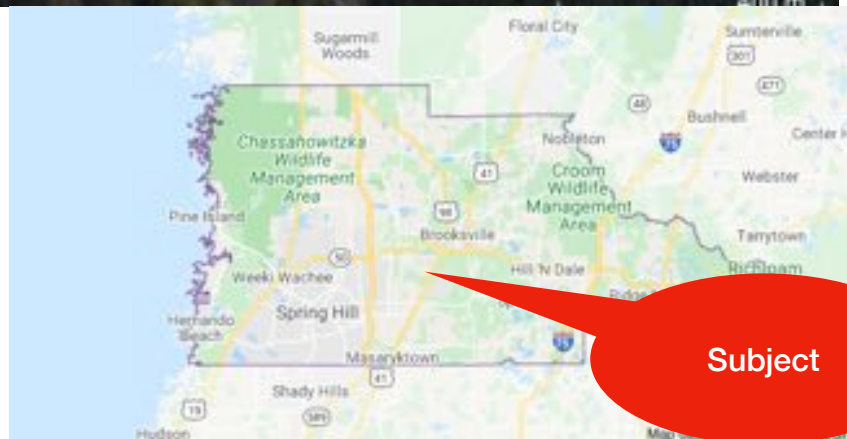
All Utilities Available - County & City

1/2 mile frontage Broad St. - 6 lane divided Hwy

Recent survey / Geotechnical / Environmental

Real Estate Taxes: \$2,530/yr (greenbelt)

Tommie Dawson Realty



Subject

352-796-4948

Tommie Dawson Realty

Aerial View facing South

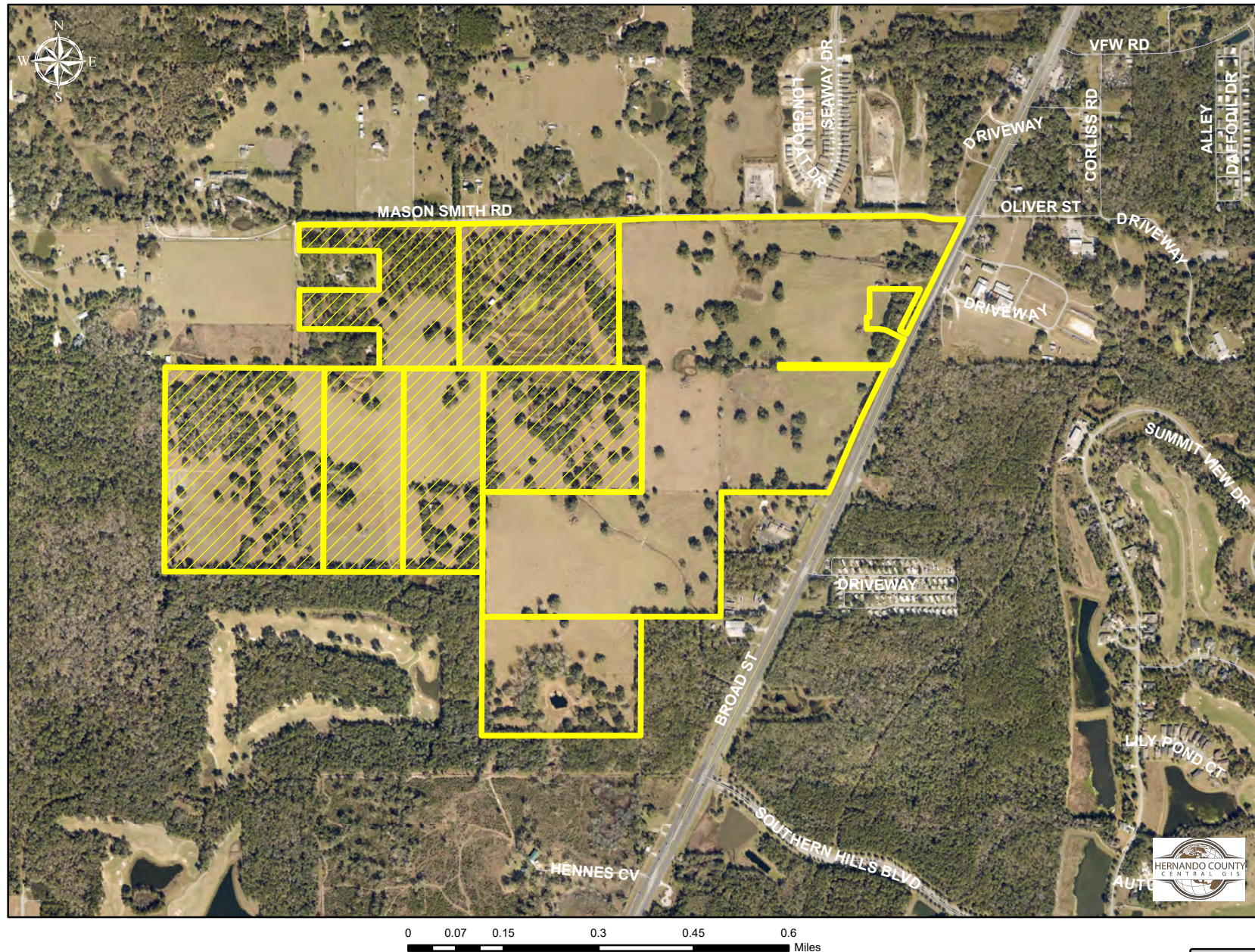


H21-85 and H-21-87

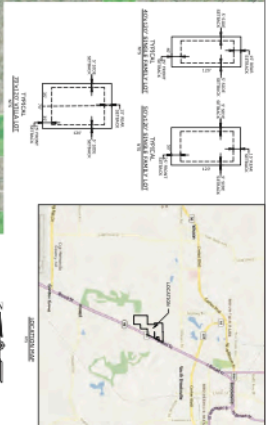
9.d

Photo date: 2020

This map was prepared by this office to be used as an aid in land parcel location and identification only. All land locations, right-of-way widths, acreages, and utility locations are subject to field survey or other appropriate verification.



Attachment: H2185 & H2187 Aerial Map (19777 : Rezoning H-21-85 & H-21-87 - Lennar Homes, LLC



Coastal
Engineering Associates, Inc.
585 Cambridge Boulevard • Brookville
(303) 796-0423 • Fax (303) 796-0424
EO-000142

| DATE | REV. BY/CHK. NO. | REVISION | PURPOSE OF DOCUMENT |
|------|------------------|----------|---|
| --- | --- | --- | THIS DOCUMENT, COMPRISED OF THE INCORPORATED DEEDS AND SETBACKS, A.S. & A.S. IS A TESTAMENTARY PROFESSIONAL SERVICE, IS THE PROPERTY OF COUNCIL ENGINEERS, ASSOCIATES, INC. AND IS NOT TO BE USED, IN WHOLE OR IN PART, BY ANY OTHER FIRM WITHOUT THE WRITTEN AUTHORIZATION OF COUNCIL ENGINEERS ASSOCIATES, INC. |
| --- | --- | | |
| --- | --- | | |
| --- | --- | | |

THIS PROJECT HAS BEEN APPROVED FOR THE CITY OF LOS ANGELES BY THE CITY ENGINEER'S OFFICE.

| | REV. QTY | REV. NO. |
|--|----------|----------|
| | | |
| | | |
| | | |
| | | |
| | | |



Packet Pg. 1514