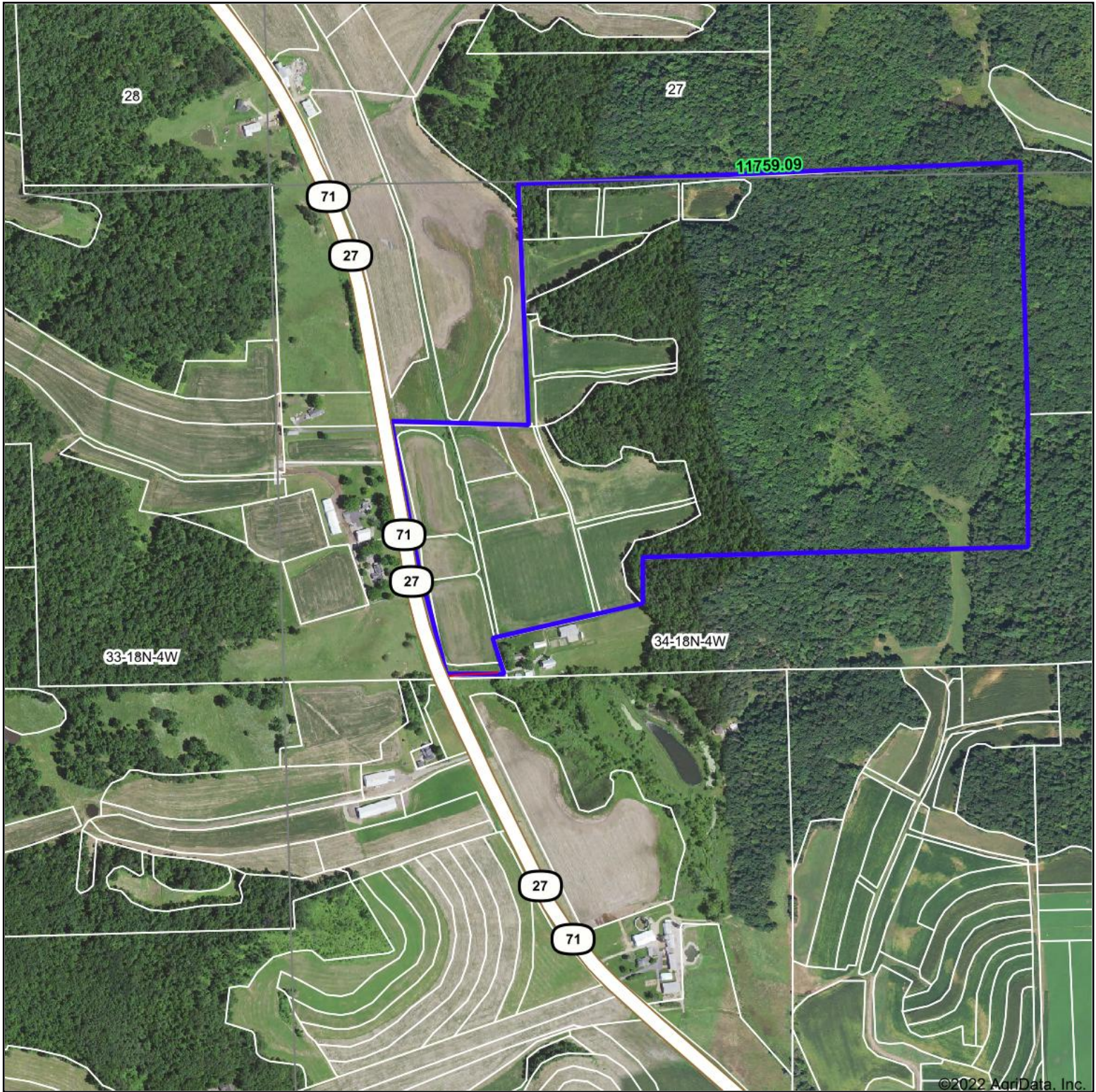


Aerial Map



©2022 AgriData, Inc.

Map Center: 43° 59' 42.09, -90° 50' 47.42

0ft 829ft 1658ft

34-18N-4W
Monroe County
Wisconsin



8/17/2022



WEISS REALTY
HUNTING & FARMLAND PROPERTIES

Maps Provided By:



CUSTOMIZED ONLINE MAPPING

© AgriData, Inc. 2021

www.AgriDataInc.com

Field borders provided by Farm Service Agency as of 5/21/2008.