



McGuire's Chapel Tract



148 Acres
Tallapoosa County, Alabama

McGuire's Chapel Tract

148 Acres

Tallapoosa County, Alabama

LOCATION: East Alabama: New Site, Alabama is 7.8 miles to the west. Alexander City, Alabama is 18.4 miles to the southwest. Auburn, Alabama is 47 miles to the Southeast. Montgomery, Alabama is 73 miles to the south. Birmingham is 104 miles to the northwest. Atlanta, Georgia is 106 miles to the east.

DESCRIPTION: The McGuire's Chapel Tract is a hunter's and recreationalist's dream. This property is covered in natural hardwoods with scattered pines. This tract has county road frontage on two sides with power available. There is a good interior road system that allows easy access to all parts of the property and the several food plots already in place. There are two streams on the property and potential pond sites. There is great habitat for deer and turkey on this property with a lot of acorn producing trees. There are several nice homesites located on this property with nice views.

ACCESS: From New Site, Alabama take Alabama 22 East for 5.7 miles and turn left onto Chapel Road. The McGuire's Chapel Tract will be on the right in 2.1 miles.

Price:\$349,995.00

Contact Information:

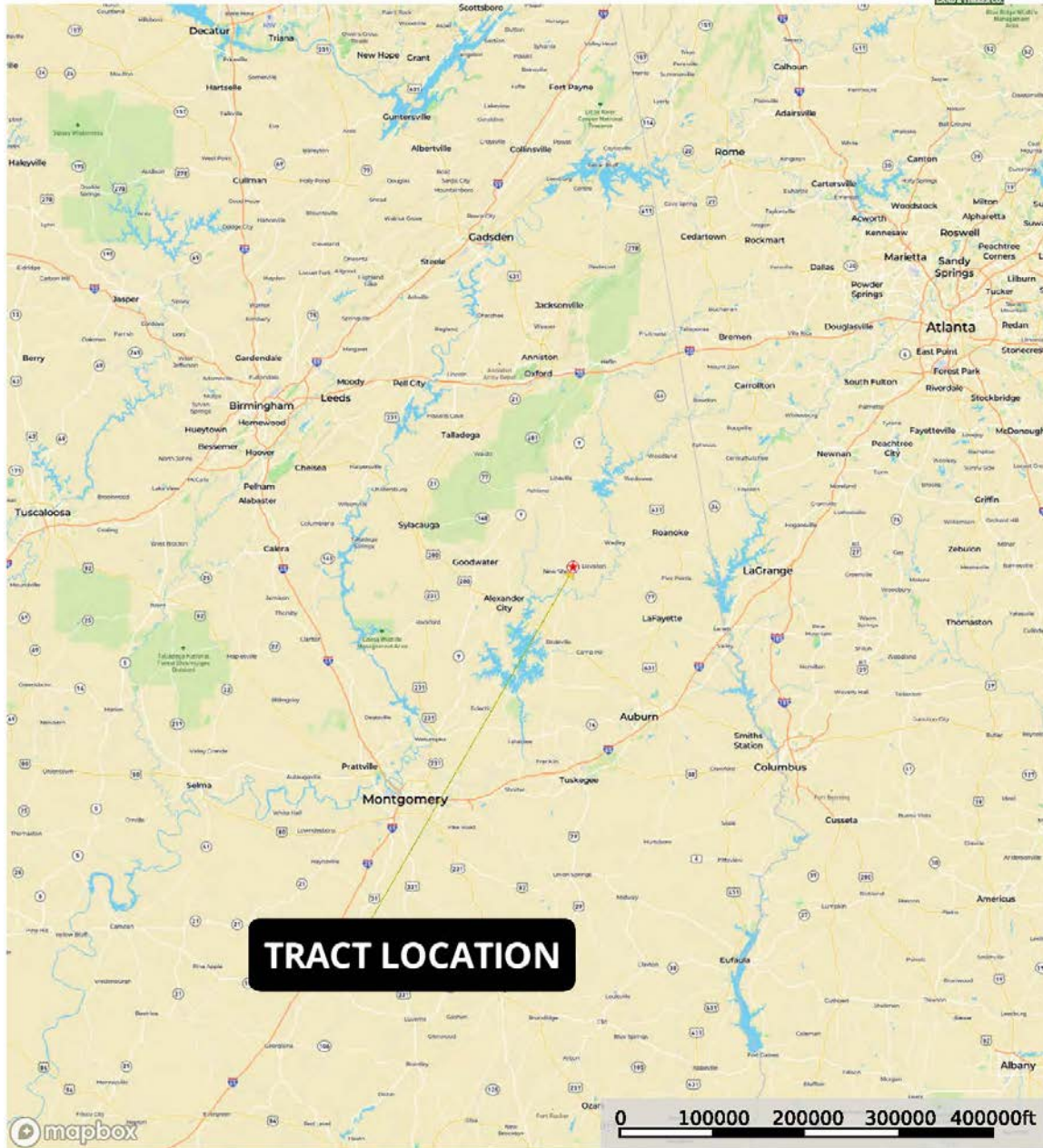
F. Bradford Butler

800-704-0645

brad@butlerlandandtimber.com

LOCATION

McGuire's Chapel Tract
Tallapoosa County, Alabama, 148 AC +/-



★ Proposed Site
 — Direction
 ▭ Boundary

Brad Butler
 P: 850-776-0252 www.butlerlandandtimber.com

M The information contained herein was obtained from sources deemed to be reliable. MapRight Services makes no warranties or guarantees as to the completeness or accuracy thereof.

AERIAL

McGuire's Chapel Tract
Tallapoosa County, Alabama, 148 AC +/-



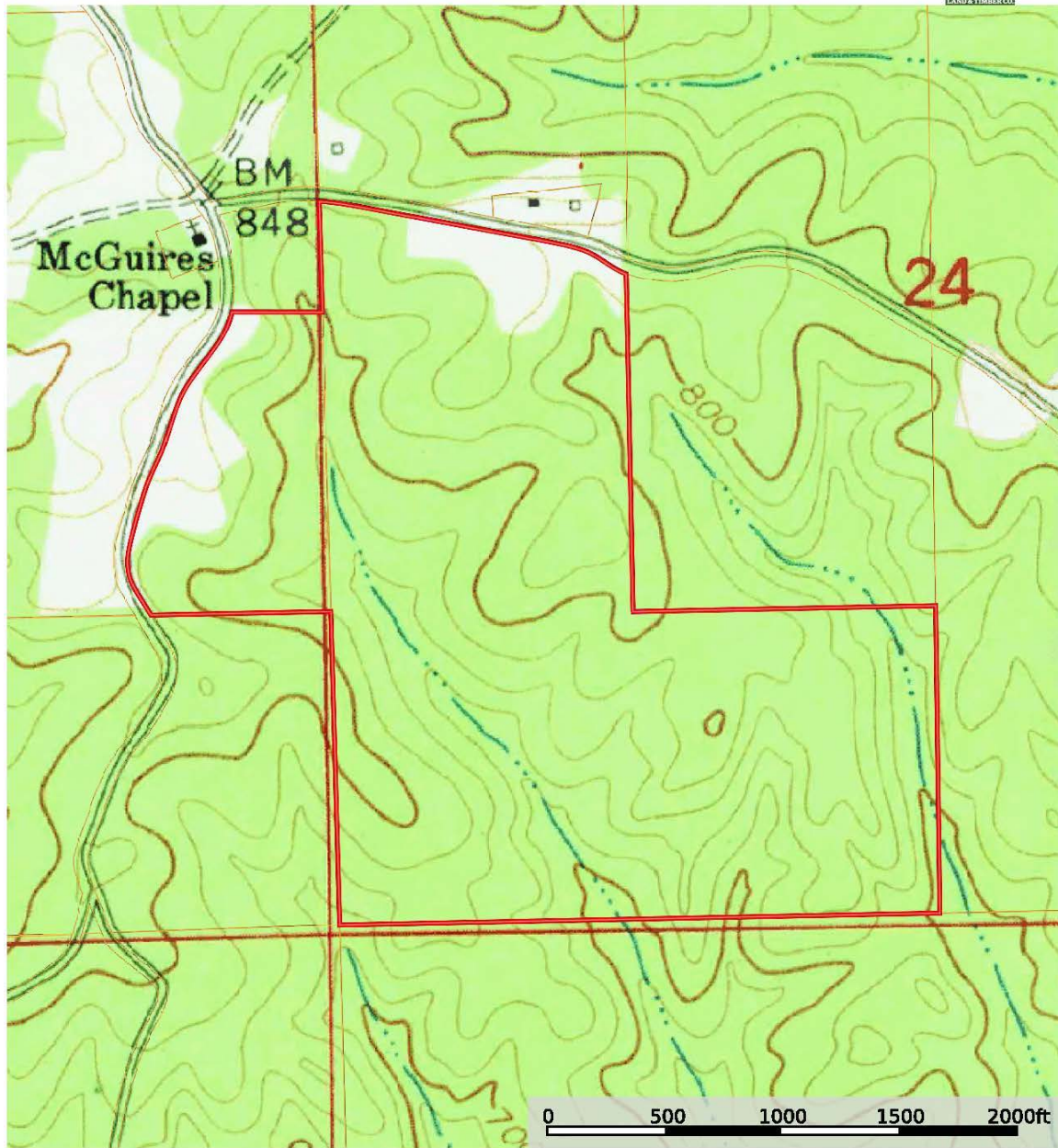
Boundary

Brad Butler
P: 850-776-0252 www.butlerlandandtimber.com

M The information contained herein was obtained from sources deemed to be reliable. MapRight Services makes no warranties or guarantees as to the completeness or accuracy thereof.


TOPOGRAPHY

McGuire's Chapel Tract
Tallapoosa County, Alabama, 148 AC +/-



 Boundary

Brad Butler
P: 850-776-0252 www.butlerlandandtimber.com

 The information contained herein was obtained from sources deemed to be reliable. MapRight Services makes no warranties or guarantees as to the completeness or accuracy thereof.



Listing Broker

F. Bradford Butler

850-776-0252

brad@butlerlandandtimber.com