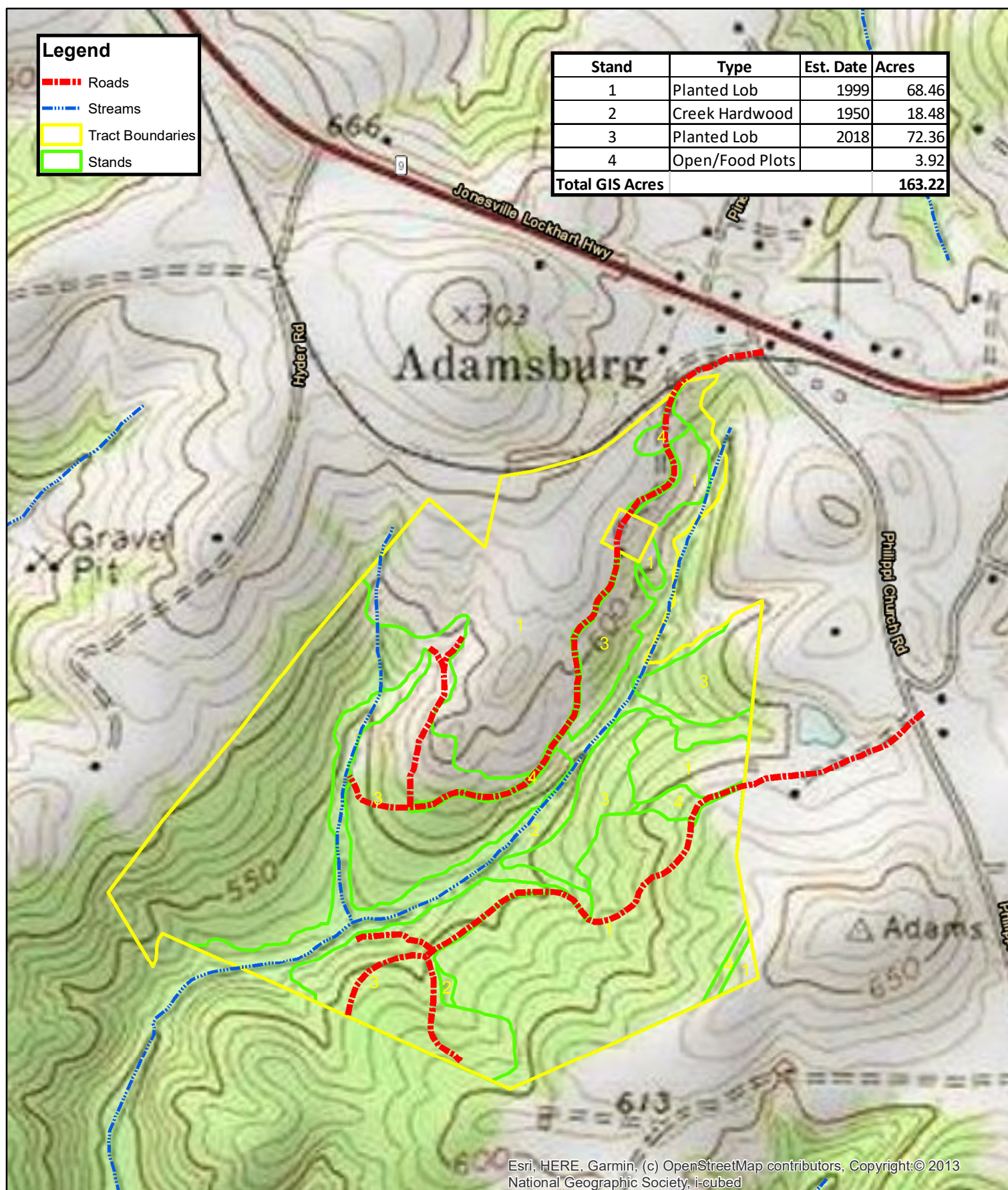


Legend

- Roads
- Streams
- Tract Boundaries
- Stands

Stand	Type	Est. Date	Acres
1	Planted Lob	1999	68.46
2	Creek Hardwood	1950	18.48
3	Planted Lob	2018	72.36
4	Open/Food Plots		3.92
Total GIS Acres			163.22

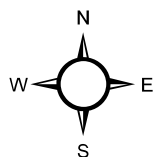


Esri, HERE, Garmin, (c) OpenStreetMap contributors, Copyright:© 2013
National Geographic Society, i-cubed

Owners and owner's agents make no claims as to the accuracy of this map.



SOUTHEASTERN FORESTRY
Managing your forests for the future



660 0 660 Feet



Johnson Tract
Topo Map
Aerial Photography
Union TMS: 048-00-00-016
163± GIS Acres
Union County, SC
August, 2022