



Area Homes Specialists

Setting the trend for how Real Estate is sold in the Midwest.

www.BarnesRealty.com

18156 Hwy 59
Mound City, MO 64470
(660) 442-3177

1711 Oregon
Hiawatha, KS 66434
(785) 742-4580

1708 Prairie View Rd, Suite B
Platte City, MO 64079
(816) 219-3010

16.9 Acres & Home 16491 Holt 153, Craig, MO 64437



Beautiful rural home with lots of shade and is close to town. Homesite is 3.5 acres with 13.4 acres of farm ground for a total of 16.9 acres. With the extra outbuildings, this would be a great place for horse or livestock owners. The seller will separate the house from the acreage for \$235,000.00

Price: \$350,000.00

Bedrooms: 4

Baths: 2

Taxes: 2021 taxes were \$1,324.17

Garage: Detached 4 car

Heating/Cooling: Propane

Other Features:

- 40' x 60' Metal shed w/concrete floor and 13' x 60' overhang
- 2 large outbuildings, one w/3 bays
- Appliances included: Refrigerator, Microwave, Stove, Washer & Dryer
- Utility shed

LISTING AGENT: BP Sharp
(660) 572-0029 or BPSHarp@BarnesRealty.com

BROKER PARTICIPATION:

Barnes Realty Company, as listing Broker, will gladly and fully cooperate with most licensed Real Estate Brokers to obtain a sale of the property on terms satisfactory to the current Owners. Brokers should call our office for details of our Co-Brokerage Policy.

Setting the trend for how Real Estate is sold in the Midwest.

This information is thought to be accurate; however, it is subject to verification and no liability for error and omissions is assumed. Barnes Realty has made every effort to present accurate information on the property presented. Most of the information comes from outside sources: County/Government/Seller and human error can occur. It's the Buyer's responsibility to satisfy himself with the information presented and to determine the information to be true and accurate and the property to be suited for his intended use. The listing may be withdrawn with or without approval. The Seller further reserves the right to reject any and all offers.

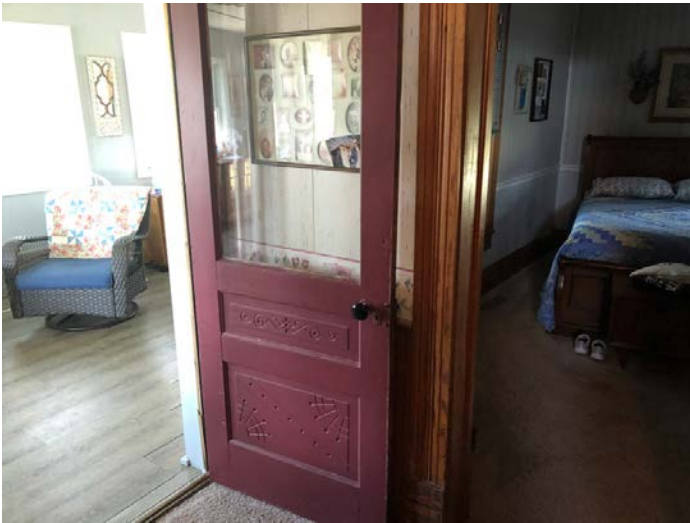
All inquiries, inspections, appointments, and offers must be sent through:

RICK BARNES, BROKER, BARNES REALTY COMPANY, 18156 HWY 59, MOUND CITY, MO 64470 PHONE NUMBER: 1-660-442-3177.

16491 Holt 153, Craig, MO 64437
Photos



16491 Holt 153, Craig, MO 64437
Photos



16491 Holt 153, Craig, MO 64437
Photos



16491 Holt 153, Craig, MO 64437
Photos

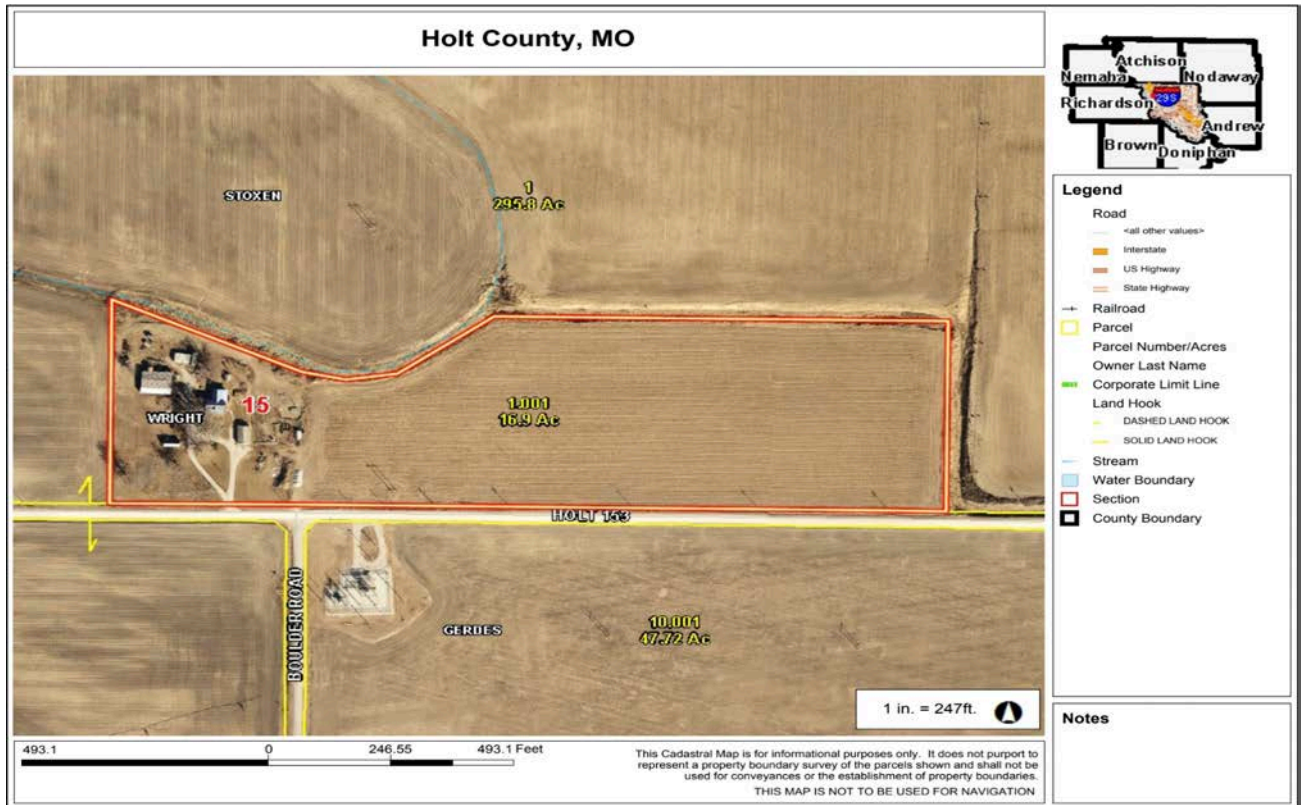


16491 Holt 153, Craig, MO 64437
Photos

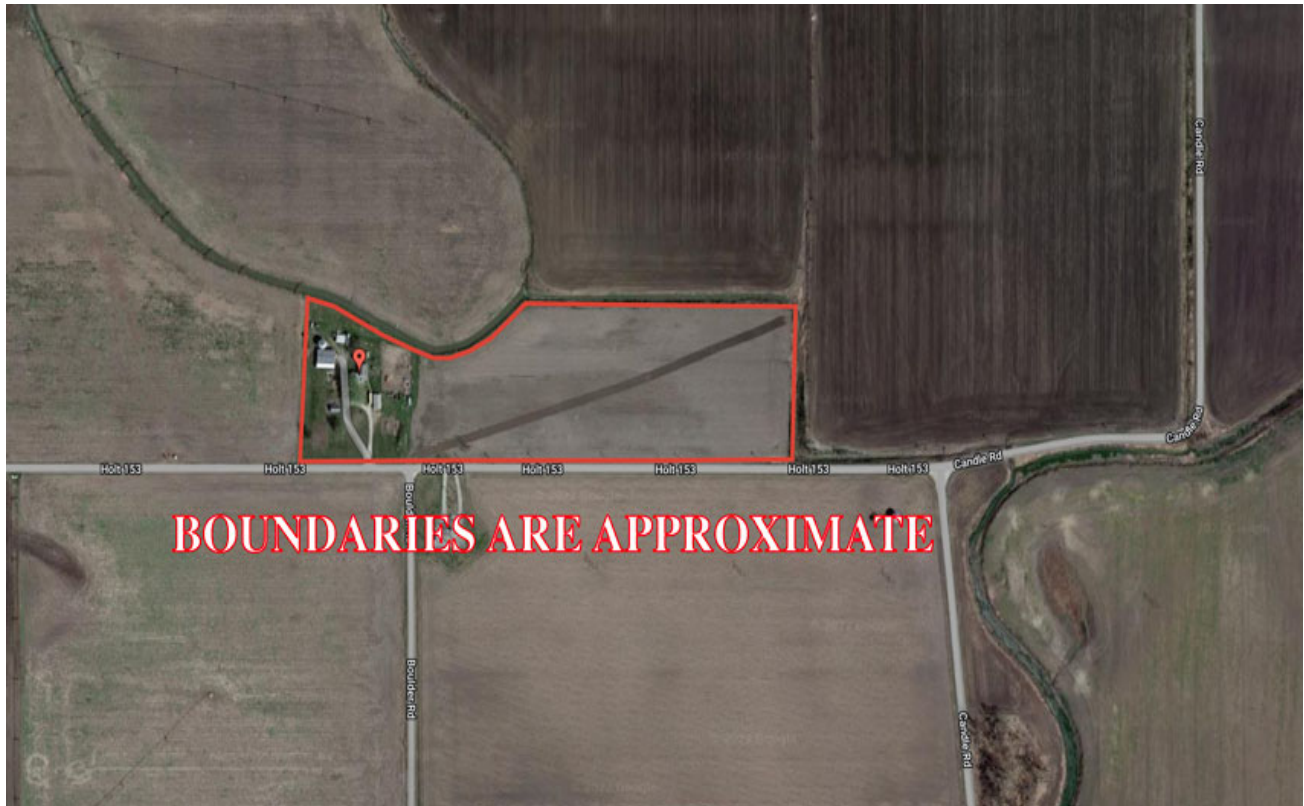


PHOTOS PROVIDED BY: RICK BARNES, BROKER, BARNES REALTY COMPANY, 18156 HWY 59, MOUND CITY, MO 64470 PHONE NUMBER: 1-660-442-3177.

16491 Holt 153, Craig, MO 64437
Tax Map

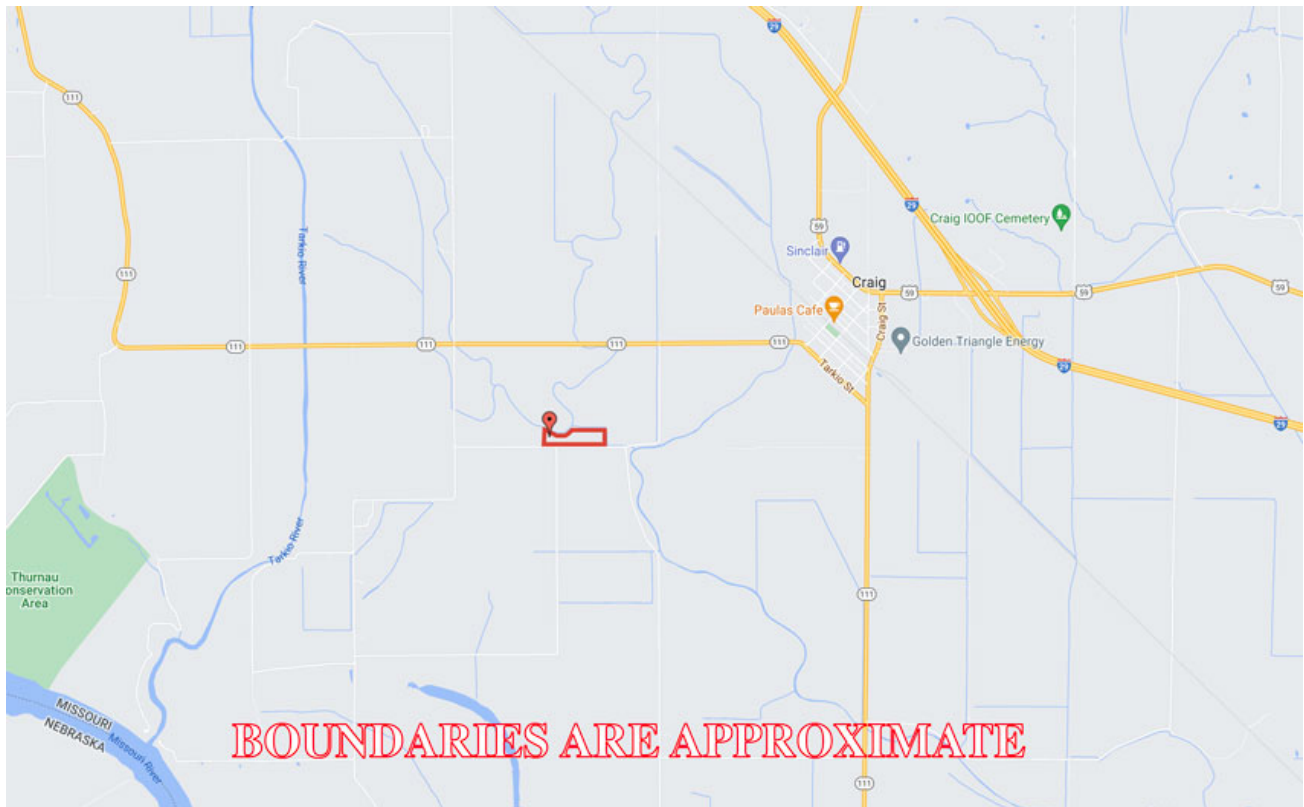


Google Aerial Map

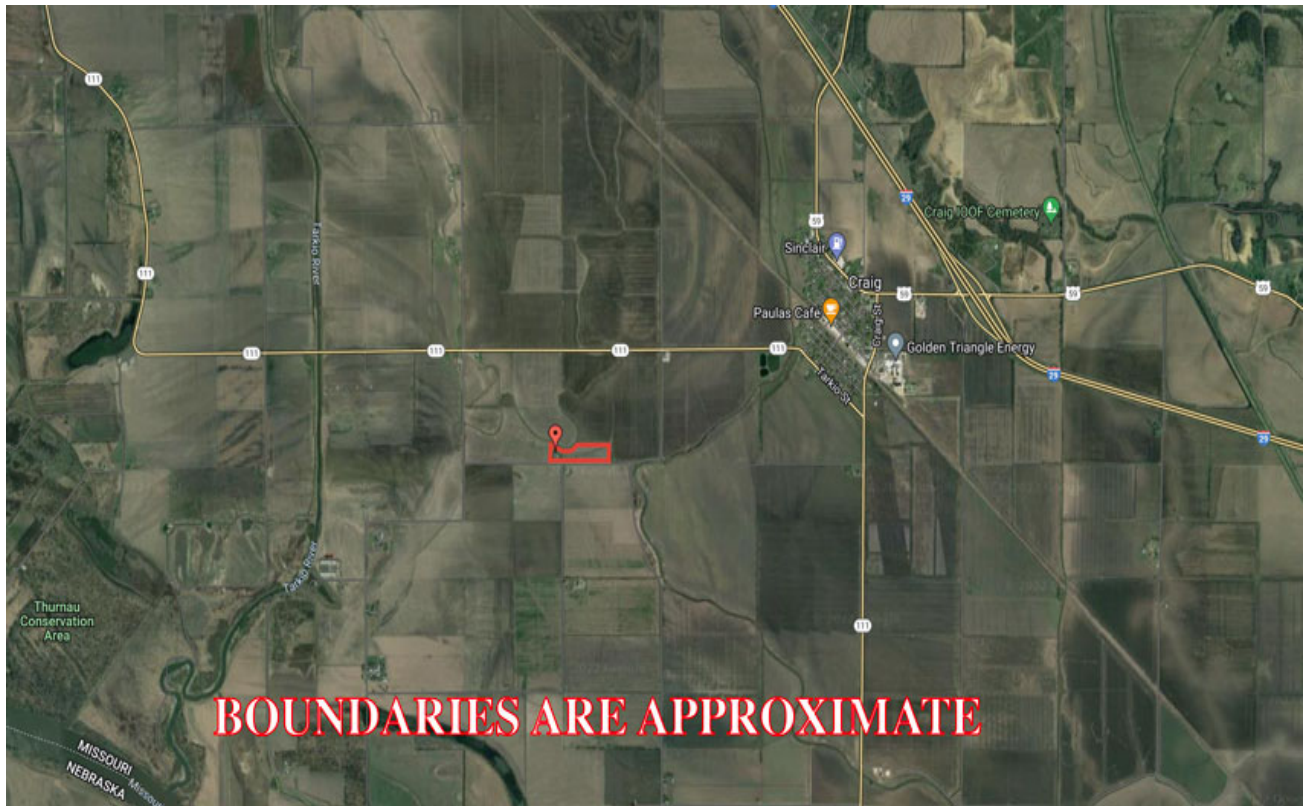


PHOTOS PROVIDED BY: RICK BARNES, BROKER, BARNES REALTY COMPANY, 18156 HWY 59, MOUND CITY, MO 64470 PHONE NUMBER: 1-660-442-3177.

16491 Holt 153, Craig, MO 64437
Driving Map



General Location Map



PHOTOS PROVIDED BY: RICK BARNES, BROKER, BARNES REALTY COMPANY, 18156 HWY 59, MOUND CITY, MO 64470 PHONE NUMBER: 1-660-442-3177.