



FARM & RANCH

**51 ACRES IN SANTO ISD
WITH EASY ACCESS TO
I-20 AND HWY 281**

1534 Live Oak Rd. – Santo, TX



**STEPHEN
REICH GROUP**
WILLIAMS TREW REAL ESTATE

Williamstrew 

A DIVISION OF EBBY HALLIDAY REAL ESTATE, INC.

LISTED BY **STEPHEN REICH GROUP** OF WILLIAMS TREW REAL ESTATE

PROPERTY SUMMARY

DESCRIPTION

51 acres in Santo ISD with easy access to I-20 and Hwy 281. This nicely wooded acreage is perfectly awaiting the home of your dream. 2 Santo water taps provide ample water, and underground electricity is already installed. A new 40X60 shop with a 20X60 overhang is in place and features 2 inches of Spray Foam and 2 large roll-up doors. Large mature hardwood trees, rolling terrain and a nice pond add to the ambiance of this great property. Native grasses, as well as some Coastal Bermuda grass provide good grazing for livestock, and yet there is enough cover to create a perfect habit for all sorts of wildlife.

LOCATION

CITY Santo
County Palo Pinto
Schools Santo ISD

OFFER SUMMARY

List Price \$1,390,950
Lot Size 51.17 acres
Utilities Co-op Water, Electricity Available

Driving Directions From I-20 and Hwy 281, go East on the South Service Road of I-20. Go south on Live Oak Road for 1.5 miles, property is on the right. There is no sign on the property.

HIGHLIGHTS

- 51.17 ACRES
- EASY ACCESS TO I-20 & HWY 281
- 40X60 SHOP W/20X60 OVERHANG
- NICELY WOODED ACREAGE
- COASTAL BERMUDA
- AG EXEMPT

LISTING PRESENTED BY:



STEPHEN REICH
817-597-8884
stephen.reich@williamstrew.com



WilliamsTrew
A DIVISION OF EBBY HALLIDAY REAL ESTATE, INC.

PROPERTY WEBSITE LINK:
stephenreichgroup.com/20039548



PARKER COUNTY OFFICE
400 Shops Boulevard, Ste. 200
Willow Park, TX 76087

FARM & RANCH • RESIDENTIAL • COMMERCIAL-DEVELOPMENT • LAND

PROPERTY PHOTOS



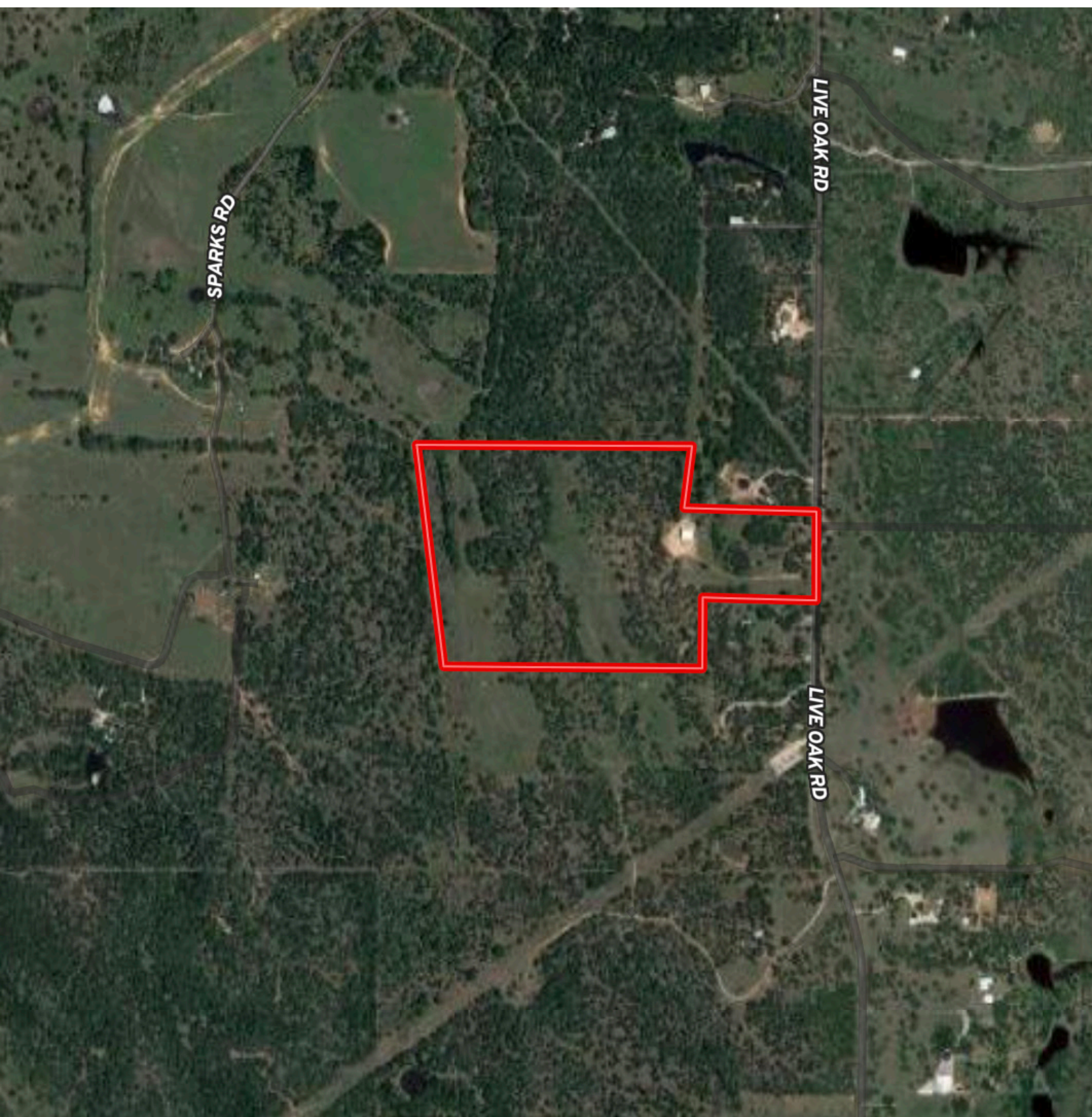
PROPERTY PHOTOS



STEPHEN REICH – 817.597.8884



AERIAL MAP



CONTOUR LINES & FLOODPLAIN

