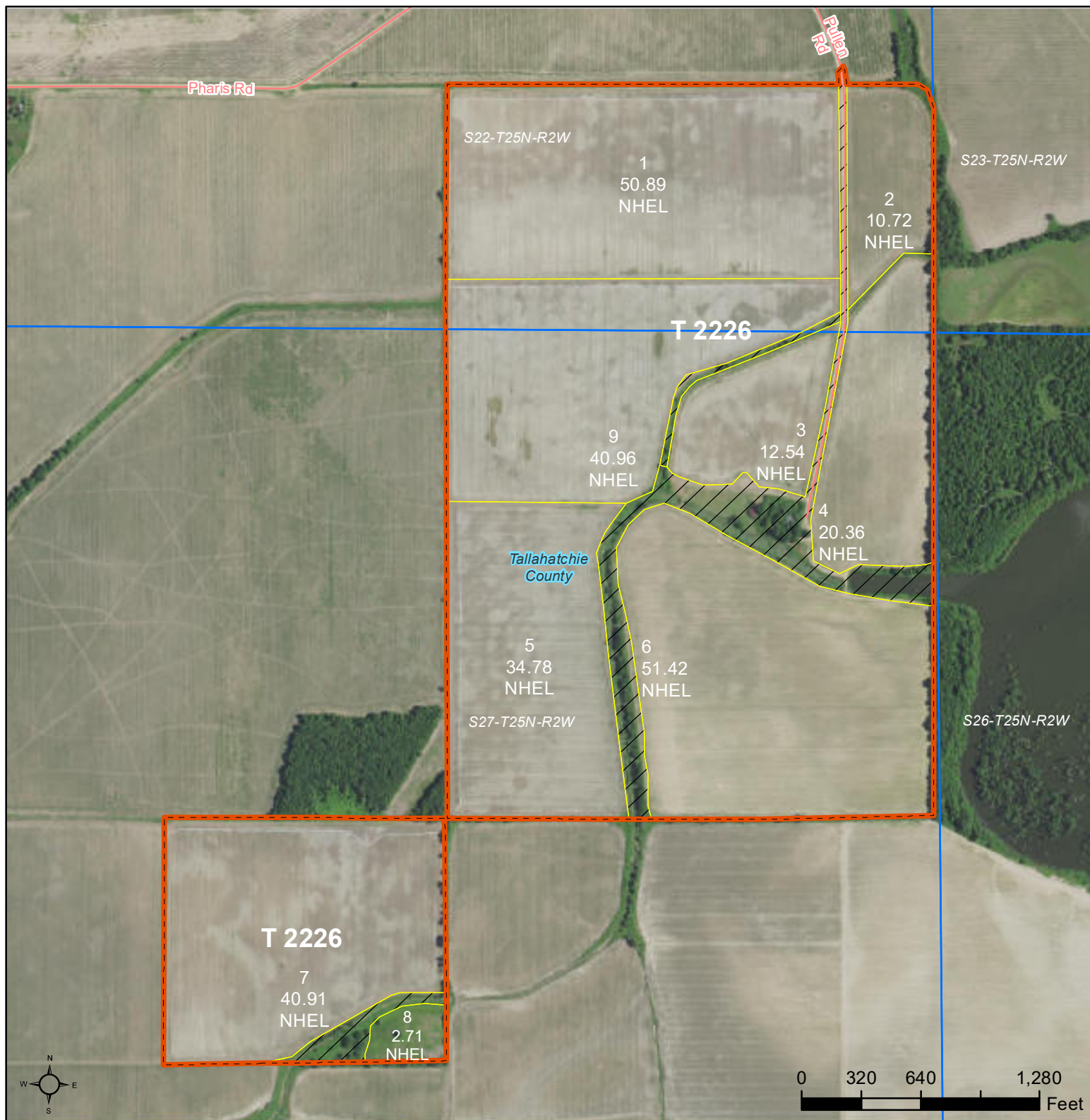




United States
Department of
Agriculture

Tallahatchie County, Mississippi



Common Land Unit Tract Boundary

Non-Cropland
 Cropland

Wetland Determination Identifiers

- Restricted Use
- Limited Restrictions
- Exempt from Conservation Compliance Provisions

For COMPLIANCE, unless otherwise noted:

IU='GR' for Wheat(SRW), Oats(WTR), Rice(LGR), Corn(YEL), Grain Sorghum(GRS), Soybeans(COM);
IU='NP' for Peanuts(RUN), IU='FH' for FAVs;
For Grass/Mixed Forage: IU='FG' if Hayland, 'GZ' if (P)astureland, 'LS' if Left Standing;
Crop Status=Initial; Irrigation Practice='N' except for Rice; Planting Pattern=Solid; I=Idle; Shares=100%

2022 Program Year

Map Created May 02, 2022

Farm 2466
Tract 2226

Tract Cropland Total: 265.29 acres

United States Department of Agriculture (USDA) Farm Service Agency (FSA) maps are for FSA Program administration only. This map does not represent a legal survey or reflect actual ownership; rather it depicts the information provided directly from the producer and/or National Agricultural Imagery Program (NAIP) imagery. The producer accepts the data 'as is' and assumes all risks associated with its use. USDA-FSA assumes no responsibility for actual or consequential damage incurred as a result of any user's reliance on this data outside FSA Programs. Wetland identifiers do not represent the size, shape, or specific determination of the area. Refer to your original determination (CPA-026 and attached maps) for exact boundaries and determinations or contact USDA Natural Resources Conservation Service (NRCS).