



DAY TRACT NORTH

NW CR-251
MAYO, FL 32066

John A. "Tony" Wallace, CF

Senior Advisor

C: 352.538.7356

tony.wallace@svn.com

Matthew Simpson

Associate Advisor

C: 352.317.8932

matthew.simpson@svn.com



Sale Price **\$195,000**

OFFERING SUMMARY

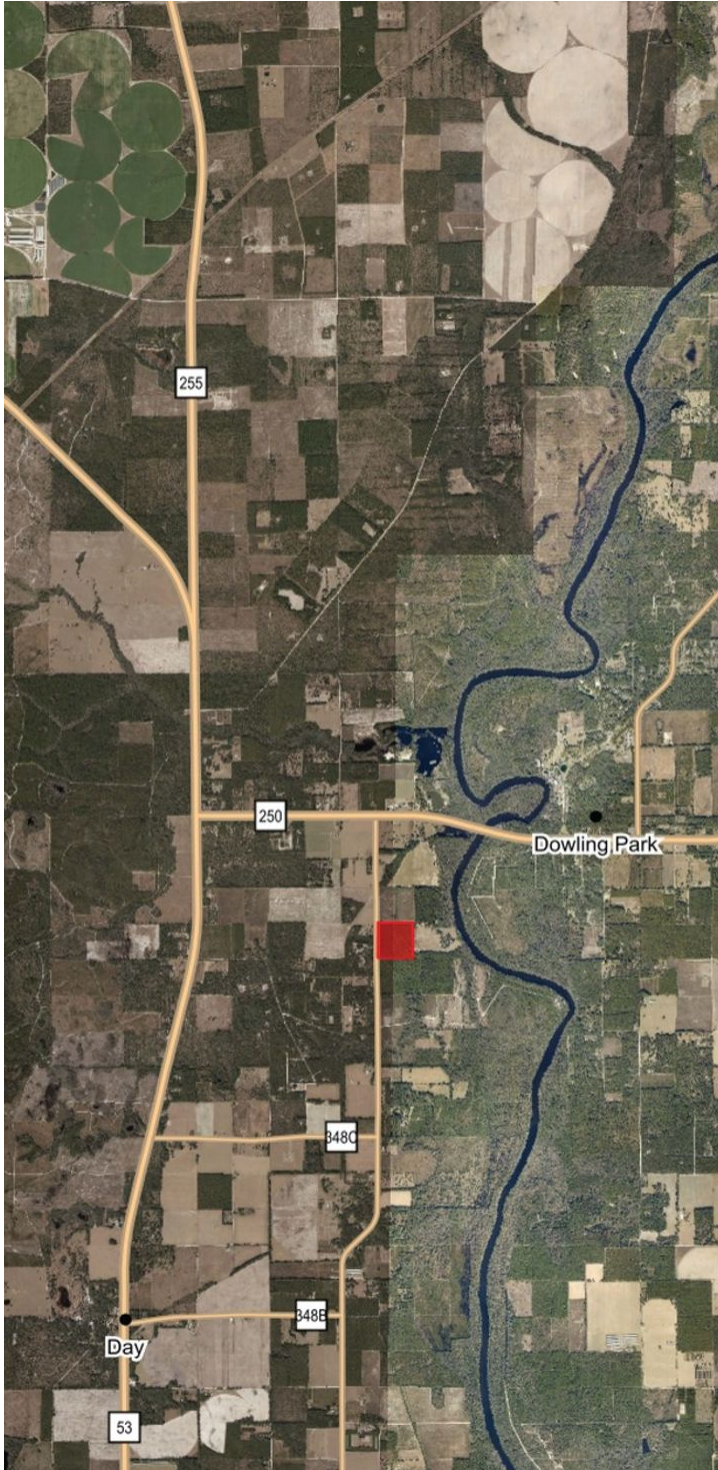
Acreage: 39 Acres
Price / Acre: \$5,000
City: Mayo
County: Lafayette

Property Type: Land: Land
 Investment,
 Timberland

PROPERTY OVERVIEW

Day Tract North is 39 acres with planted slash pine approximately 13 years old. Located in Mayo, Florida, this property is 100% uplands and is an excellent property for hunting deer, turkey, and other small game species. The property can be accessed directly from NW County Rd and is situated only minutes from the Suwannee River and the Christian Advent Center in Dowling Park. Day Tract North is great for building a recreational retreat with future investment potential. Contact the advisors for more information.

Specifications & Features



SPECIFICATIONS & FEATURES

| | |
|------------------------------------|----------------------------------------------------------------------------------------------------------|
| Land Types: | <ul style="list-style-type: none">• Land Investment• Timberland |
| Uplands / Wetlands: | 100% Upland |
| Soil Types: | <ul style="list-style-type: none">• Primarily Otella-Penney Complex• 0-5% Slopes. |
| Taxes & Tax Year: | Taxes for 2021 were approx. \$4.00 per acre. |
| Zoning / FLU: | Agricultural |
| Lake Frontage / Water Features: | None |
| Road Frontage: | Paved road frontage on CR 251 |
| Fencing: | None |
| Current Use: | Timberland |
| Potential Recreational / Alt Uses: | Hunting, camping, hiking, ATV, etc. |
| Land Cover: | Planted slash pine 13 years old. |
| Structures & Year Built: | None |
| Game Population Information: | Deer, turkey, small game species |
| Species: | Slash pine |
| On Site Road Access: | Tract can be accessed from road frontage on CR 251 |
| Timber Cruise: | None |
| Age of Stages of Timber: | Slash pine. Approx. 13 years old |
| Current Management Information: | Pine plantation |



LOCATION & DRIVING DIRECTIONS

Parcel:

GPS:

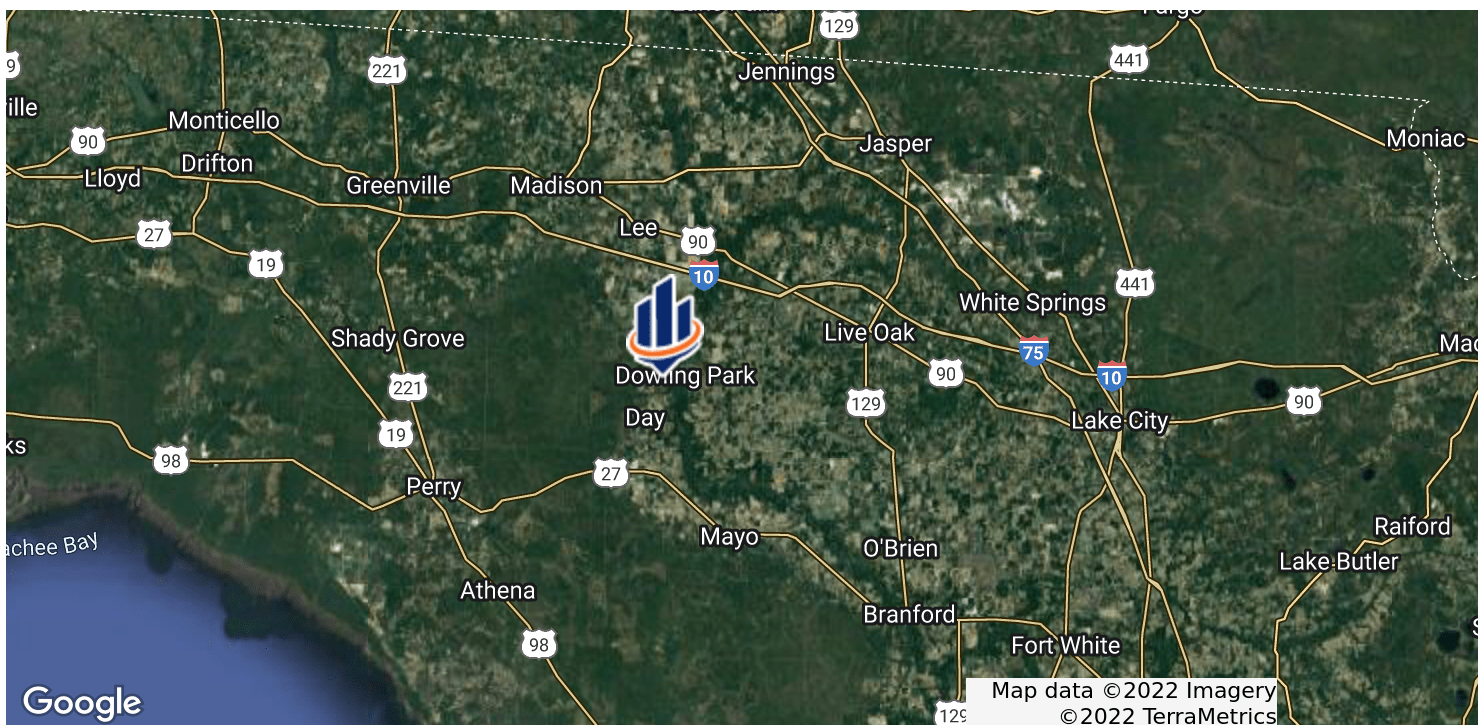
30.2328947, -83.261929

Driving Directions:

From Dowling Park FL travel
NW County Rd 250 to the
west for approx 1.46 miles
Turn left [south] on NW
County Rd 251 Travel south
for 1.1 miles Property on left
(west) side of the road







Showing Instructions:

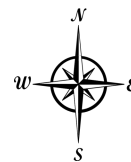
The subject property can be
viewed from the public road.





Day Tract North

-  County Boundaries
-  Polygons Drawing
-  Lines Drawing
-  Labels Drawing
-  Points Drawing
-  Streets MapWise



0 200 400 600 ft





JOHN A. "TONY" WALLACE, CF

Senior Advisor

tony.wallace@svn.com

Direct: 352.505.9274 | **Cell:** 352.538.7356

PROFESSIONAL BACKGROUND

Tony Wallace, CF, ACF is a Senior Advisor at SVN | Saunders Ralston Dantzler Real Estate in Lakeland, Florida.

Tony is the Chief Operating Officer and a principal of Natural Resource Planning Services, Inc., [NRPS] a forestry consulting firm operating in Florida and Georgia. Learn more at NRPSforesters.com.

Tony is a Florida Certified General Real Estate Appraiser, a Georgia Registered Forester, a Certified Burn Manager in Georgia, a Certified Forester through the Society of American Foresters, as well as a member of the Association of Consulting Foresters. He has over 30 years of experience providing a full range of forestry and land management services to clients throughout Florida and Georgia.

Tony holds a Bachelor of Science degree in forestry from Mississippi State University

Tony is a member of the Society of American Foresters, a past member of the board of directors, and has held past offices for the Florida Forestry Association. He has also served on the land management advisory committee of the Suwannee River Water Management District and on the technical committee for the Florida Department of Agriculture and Consumer Services.

Tony lives in Fort White, Florida, with his wife.

Disciplines

- Timberland
- Agricultural Land
- Recreational Land
- Conservation Easements

EDUCATION

- Recipient of 2009 "Above and Beyond" Award



MATTHEW SIMPSON

Associate Advisor

matthew.simpson@svn.com

Direct: 352.317.8932 | Cell: 352.317.8932

PROFESSIONAL BACKGROUND

Matthew Simpson, CF is an Advisor at SVN Saunders Ralston Dantzler Real Estate in Lakeland, Florida.

Matthew is a Senior Forester and Division Manager with Natural Resource Planning Services, Inc., a forestry consulting firm operating in Florida and Georgia, where he has worked as a consulting forester since 2000.

Matthew has over 25 years of experience in providing a full range of forestry and land management services to clients throughout Florida and Georgia. He specializes in large-scale, comprehensive timberland management projects, harvesting operations, and intensive silviculture.

Matthew is a Certified Forester through the Society of American Foresters, a Georgia Registered Forester, a Certified Burn Manager in Georgia, a member of the Florida Forestry Association, and a member of the Society of American Foresters. He has also been a licensed real estate sales associate since 1998.

Matthew holds a Bachelor of Science degree in Forest Resource Management from West Virginia University. He currently resides in Lake City, Florida with his wife and two children.

DISCIPLINES

- Timberland
- Hunting and Recreational Tracts
- Conservation Properties



For more information visit SVNsaunders.com

HEADQUARTERS

1723 Bartow Road
Lakeland, Florida 33801
863.648.1528

ORLANDO

605 E Robinson Street, Suite 410
Orlando, Florida 32801
407.516.4300

NORTH FLORIDA

356 NW Lake City Avenue
Lake City, Florida 32055
386.438.5896

GEORGIA

125 N Broad Street, Suite 210
Thomasville, Georgia 31792
229.299.8600

©2022 SVN | Saunders Ralston Dantzler Real Estate. All SVN® Offices Independently Owned and Operated SVN | Saunders Ralston Dantzler Real Estate is a full-service land and commercial real estate brokerage with over \$4 billion in transactions representing buyers, sellers, investors, institutions, and landowners since 1996. We are recognized nationally as an authority on all types of land, including agriculture, ranch, recreation, residential development, and international properties. Our commercial real estate services include property management, leasing and tenant representation, valuation, business brokerage, and advisory and counseling services for office, retail, industrial, and multifamily properties. Our firm also features an auction company, forestry division, international partnerships, hunting lease management, and extensive expertise in conservation easements. Located in Florida and Georgia, we provide proven leadership and collaborative expertise backed by the strength of the SVN® global platform.

