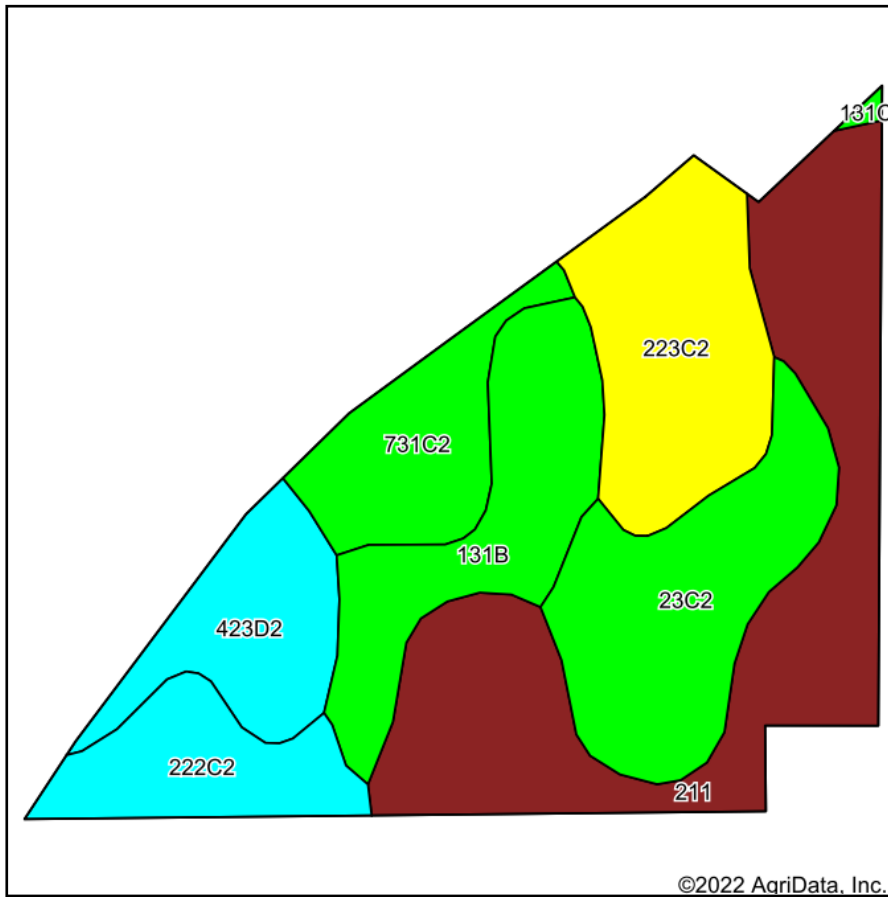
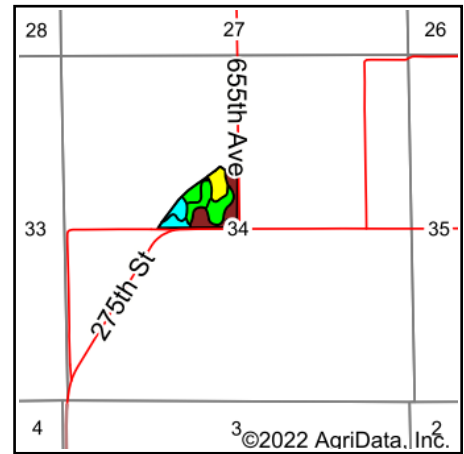


Soils Map



Soils data provided by USDA and NRCS.



State: **Iowa**
 County: **Monroe**
 Location: **34-71N-17W**
 Township: **Monroe**
 Acres: **17**
 Date: **10/10/2022**

Hawkeye Farm Mgmt & Real Estate



22 N Main, Albion IA Phone: 641-932-7796
 Email: hawkeye@uciowa.com
 On the web: www.uciowa.com
 www.iowawhitetailfarms.com

Maps Provided By:



Area Symbol: IA135, Soil Area Version: 29

Code	Soil Description	Acres	Percent of field	CSR2 Legend	Non-Irr Class *c	CSR2**	CSR	*n NCCPI Soybeans
211	Edina silt loam, 0 to 1 percent slopes	4.99	29.4%		IIIw	59	60	65
23C2	Arispe silty clay loam, 5 to 9 percent slopes, moderately eroded	2.74	16.1%		IIIe	62	50	69
223C2	Rinda silty clay loam, 5 to 9 percent slopes, moderately eroded	2.52	14.8%		IVw	45	22	48
131B	Pershing silt loam, 2 to 5 percent slopes	2.26	13.3%		IIIe	70	67	60
423D2	Bucknell silty clay loam, 9 to 14 percent slopes, moderately eroded	1.57	9.2%		IVe	6	13	44
731C2	Pershing silty clay loam, 5 to 9 percent slopes, moderately eroded	1.52	8.9%		IIIe	62	45	57
222C2	Clarinda silty clay loam, 5 to 9 percent slopes, moderately eroded	1.40	8.2%		IVw	28	25	44
Weighted Average					3.32	51.7	45.1	*n 58.1

**IA has updated the CSR values for each county to CSR2.

*n: The aggregation method is "Weighted Average using all components"

*c: Using Capabilities Class Dominant Condition Aggregation Method

Soils data provided by USDA and NRCS.