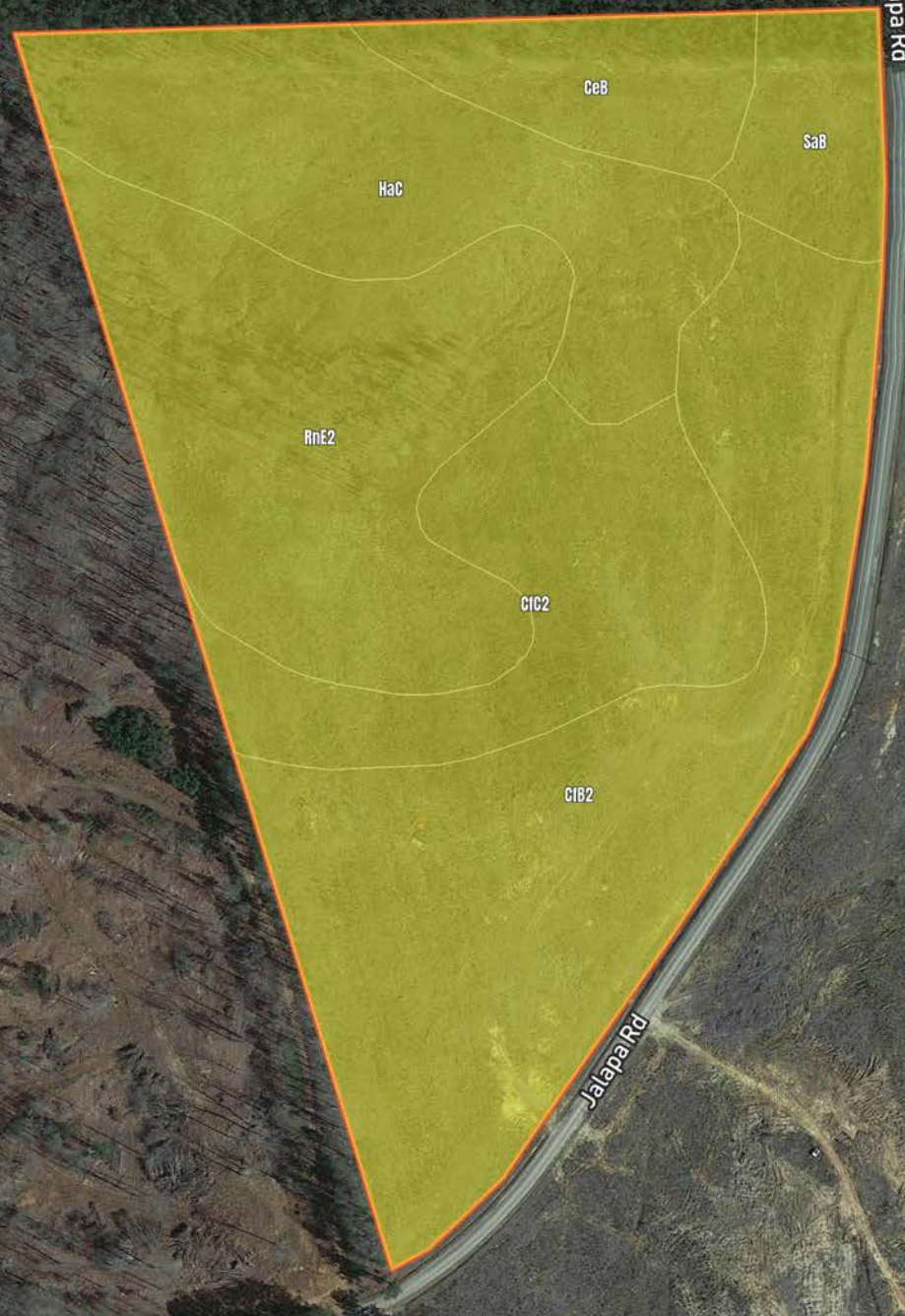


# B416-A - SC Newberry Co - Tract 6312-A

32.0 Acres





# B416-A - SC Newberry Co - Tract 6312-A

## Soil Report

S ymbol	Ma p Unit De scription	Fa rmla nd cla s s	Are a (AC)	Ava ila ble Wa te r S tora ge (0-150cm - We ighte d Ave ra ge )	Flooding Fre que ncy (Ma ximum)	Dra ina ge Cla s s (Domina nt Condition)	Dra ina ge Cla s s (We tte s t Compone nt)	Hydric Cla s s ifica tion	Wa te r Ta ble De pth (Annua l Minimum)	Wa te r Ta ble De pth (April to June Minimum)	Be drock De pth (Minimum)	S oil Orde r
CfB2	Cecil sandy clay loam, 2 to 6 percent slopes , moderately eroded	All areas are prime farmland	0	16.9	None	Well drained	Well drained	0	0	0	0	Ultisols
RnE2	Rion sandy loam, 15 to 25 percent slopes , moderately eroded	Not prime farmland	0	21.3	None	Well drained	Well drained	0	0	0	0	Ultisols
HaC	Hard Labor sandy loam, 6 to 10 percent slopes	Farmland of statewide importance	0	18.3	None	Moderately well drained	Moderately well drained	0	114	0	0	Ultisols
CfC2	Cecil sandy clay loam, 6 to 10 percent slopes , moderately eroded	Farmland of statewide importance	0	16.9	None	Well drained	Well drained	0	0	0	0	Ultisols
CeB	Cecil sandy loam, 2 to 6 percent slopes	All areas are prime farmland	0	17.6	None	Well drained	Well drained	0	0	0	0	Ultisols
SaB	Santuc loamy coarse sand, 2 to 6 percent slopes	All areas are prime farmland	0	22.3	None	Moderately well drained	Moderately well drained	0	66	0	0	Ultisols