

# LINDSAY OLIVES

Tulare County, California

**35.56± Acres**

**\$960,000**  
(\$26,997/Acre)



- Lindmore Irrigation District
- Ag Well
- Desirable Farming Location



**PEARSON  
REALTY**  
AGRICULTURAL PROPERTIES  
*A Tradition in Trust Since 1919*

## Offices Serving The Central Valley

### FRESNO

7480 N. Palm Ave, Ste 101  
Fresno, CA 93711  
559.432.6200

### VISALIA

3447 S. Demaree Street  
Visalia, CA 93277  
559.732.7300

### BAKERSFIELD

4900 California Ave., #210B  
Bakersfield, CA 93309  
661.334.2777

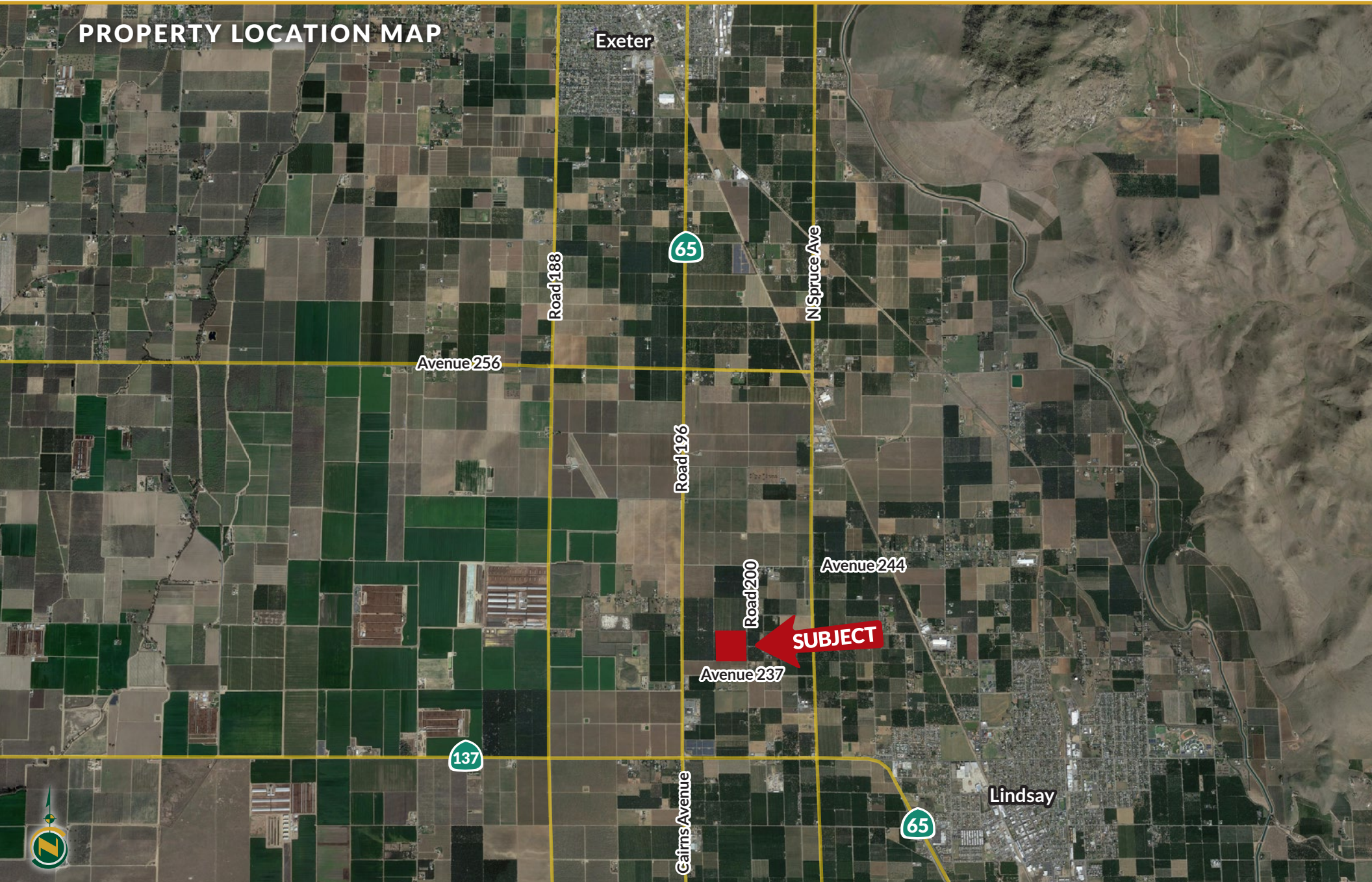
[www.pearsonrealty.com](http://www.pearsonrealty.com)

Exclusively Presented by:





## PROPERTY LOCATION MAP





## PROPERTY INFORMATION

### DESCRIPTION

Available for sale is a 35.56± acre property planted to mature olives with two sources of water. The property is located in the desirable farming location just north of Lindsay and south of Exeter, California.

### LEGAL

Tulare County APNs: 199-030-003 and 004.  
Zoning: AE-10(minimum).

### LOCATION

The property is located on the west side of Road 200 and is split by Pine Avenue. The property is located approximately 2± miles north of Lindsay and 5± miles south of Exeter, California.

### WATER

Irrigation water is supplied by one well and Lindmore Irrigation District.

### SOILS

Exeter Loam 0-2% slopes.

### PLANTINGS

The property is fully planted to mature, organically farmed olives.

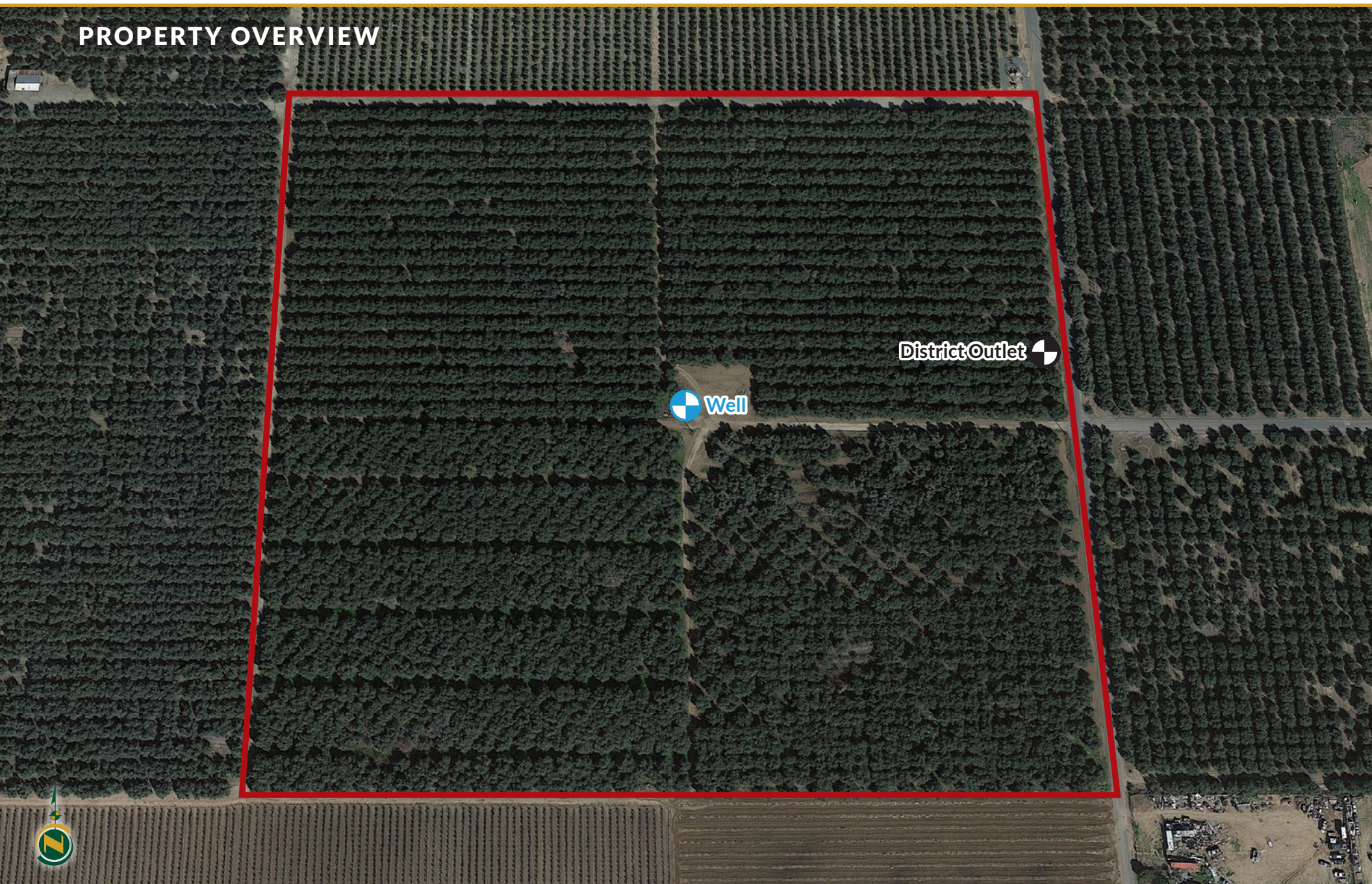
### PRICE/TERMS

The asking price is \$960,000 or \$26,997 per acre.





## PROPERTY OVERVIEW





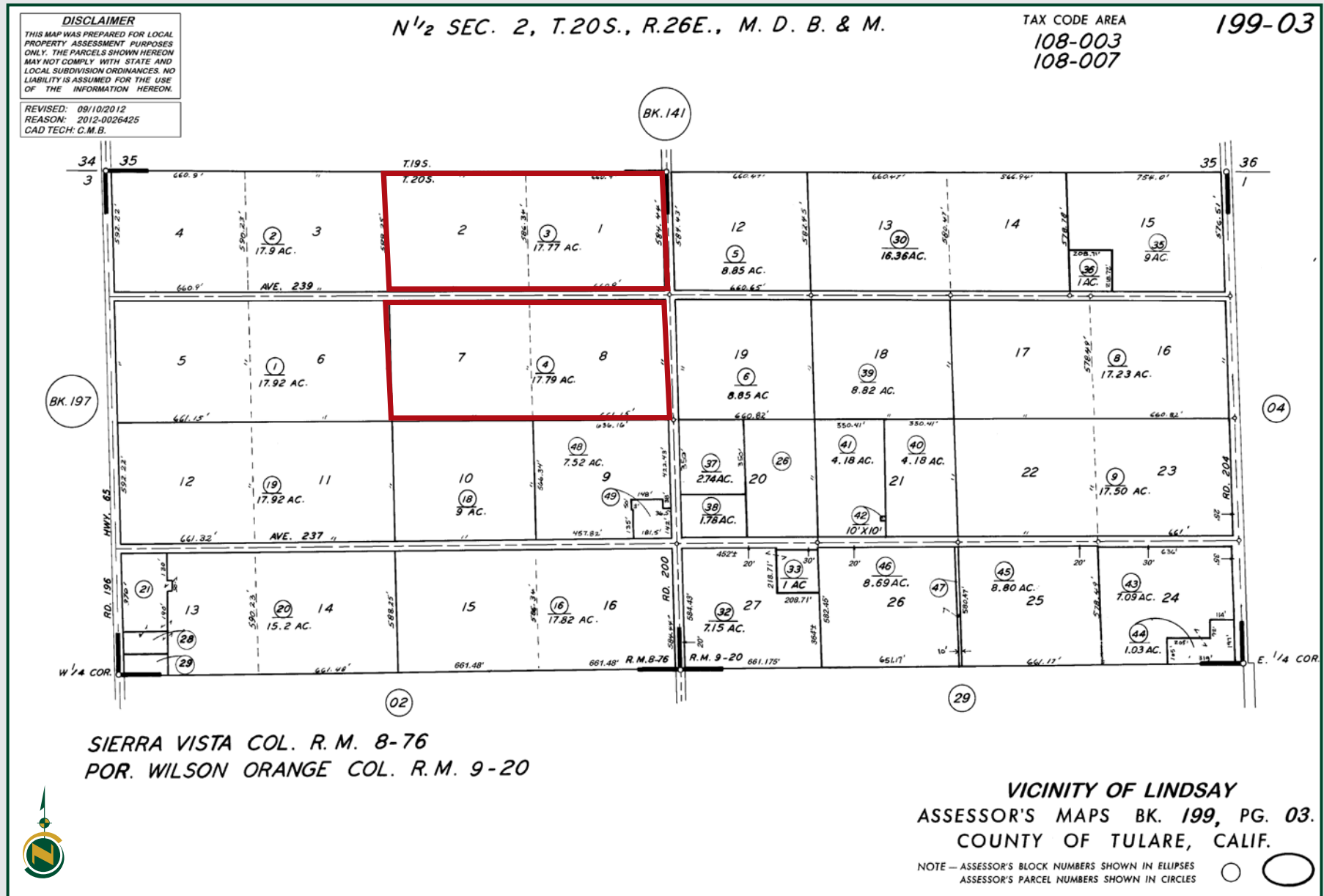
## SOILS MAP



California Revised Storie Index (CA)

Map unit symbol	Map unit name	Rating	Percent of AOI
<b>114</b>	Exeter loam, 0 to 2 percent slopes	Grade 4 - Poor	100%

## PARCEL MAP





## PROPERTY PHOTOS





# LINDSAY OLIVES

35.56± Acres  
Tulare County, CA



## Offices Serving The Central Valley

### FRESNO

7480 N. Palm Ave, Ste 101  
Fresno, CA 93711  
559.432.6200

### VISALIA

3447 S. Demaree Street  
Visalia, CA 93277  
559.732.7300

### BAKERSFIELD

4900 California Ave., #210B  
Bakersfield, CA 93309  
661.334.2777



**Download Our  
Mobile App!**

<http://pearsonrealty.com/mobileapp>



Download on the  
**App Store**



GET IT ON  
**Google Play**

**Water Disclosure:** The Sustainable Groundwater Management Act (SGMA) was passed in 2014, requiring groundwater basins to be sustainable by 2040. SGMA requires a Groundwater Sustainability Plan (GSP) by 2020. SGMA may limit the amount of well water that may be pumped from underground aquifers. Buyers and tenants to a real estate transaction should consult with their own water attorney; hydrologist; geologist; civil engineer; or other

environmental professional. Additional information is available at: California Department of Water Resources Sustainable Groundwater Management Act Portal - <https://sgma.water.ca.gov/portal/> Telephone Number: (916) 653-5791

**Policy on cooperation:** All real estate licensees are invited to offer this property to prospective buyers. Do not offer to other agents without prior approval.