

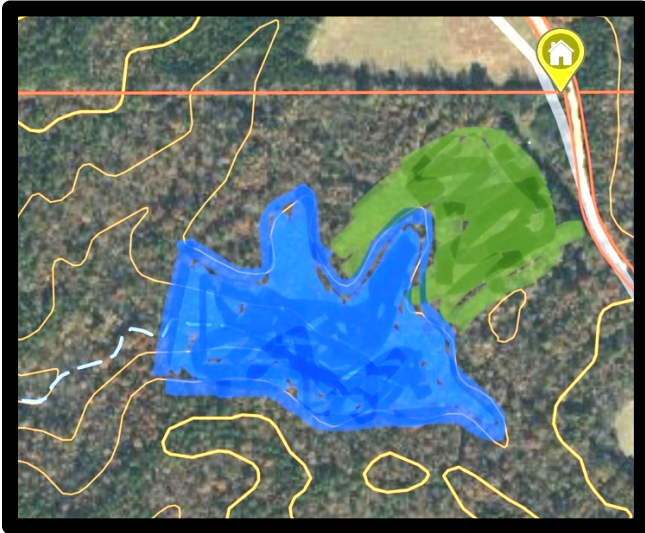
7- ACRE Lake Plan – Benton County 240 AC

The blue dotted lines are the lowest elevation points where the creeks converge on the property anywhere from 450ft-460ft in elevation.



The blue line outer boundaries for the lake are 480ft in elevation, which you can expect over time a few feet of backfill at the bottom of the lake. The natural run-offs going into the lake and overflow on the levee that drain into the major creeks are already established. The lake would never overflow because of the overflow spillway, and the prominent points of the property are at 500 ft in elevations.

The green area shows the trees that would be planned to clear in order to see the lake from the camp. A natural creek also runs through the center of the lake at the bottom, like most major reservoirs.



(mapped to show acreage amount)

